






Assembly Instructions

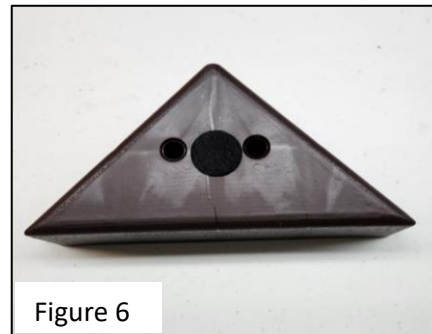
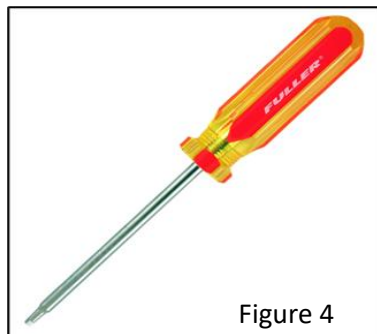
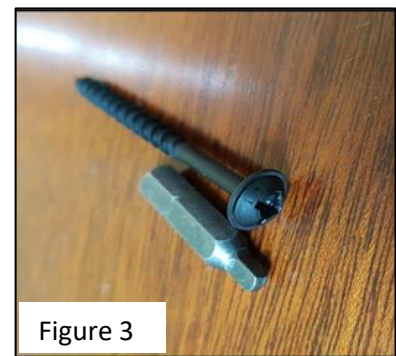
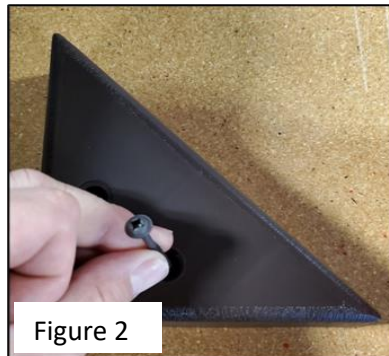
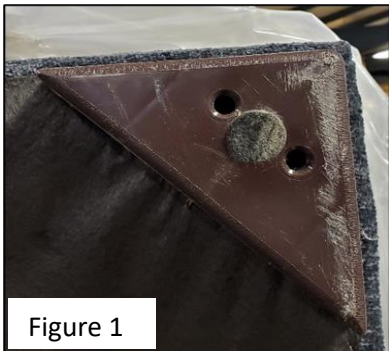
SKU# 10124802, 10224804, 10324806, 10424808, 10124814, 10224816,

10324818, 10424810, 10924810, 10137518, 10237518, 10337512, 10437514, 10937514, 10137520, 10237522,
 1037524, 10437526, 10937526, 10105371, 10205375, 10305375, 10405377, 10205373, 10905377, 10105383,
 10205385, 10305387, 10405389, 10905389, 10155263, 10255265, 10355267, 10455269, 10955269, 10155251,
 10255265, 10355267, 10455269, 10955269, 10155251, 10255253, 10355255, 10455257, 10955257, 10112580,
 10212582, 10112592, 10212594

Manufactured by AMFU for Rooms To Go

Step	Hardware	QTY
2, 3	Plastic Pyramid Leg 	4
3,4	2" Wood Screw 	8
6	Adhesive Felt Pad 	4
	Assembly Instructions	1

1. Remove hardware from red zip bag.
2. Place leg at one corner inset 1/8" - 1/4" as shown in Figure 1.
3. Place a 2" Wood Screw in the two larger holes on the bottom side of the leg, Figure 2.
4. Using a #2 square bit or phillips bit screwdriver (not included) , shown in Figures 3, 4, and 5, turn the screw clock-wise until the leg is snug with the bottom of the piece of furniture. Use caution not to over-tighten. Repeat for the second screw.
5. Repeat steps 2-4 for the remaining 3 corners.
6. Remove adhesive felt pad from paper and apply to the center of the leg, Figure 6.



Hardware Pack Location: Behind pillows attached to cushion/pillow tie.

RTG SKus Cont...

10103644

10203646

10303648

10403640

10903640

10103656

10203658

10303650

10403652

10903652