






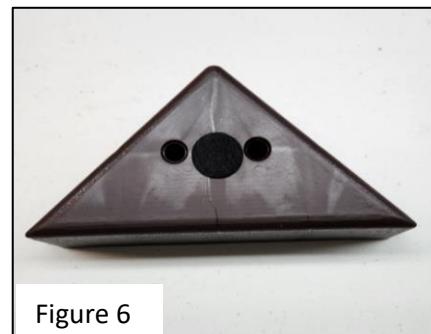
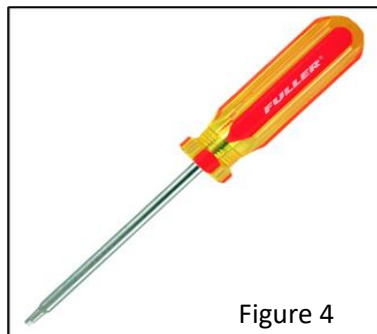
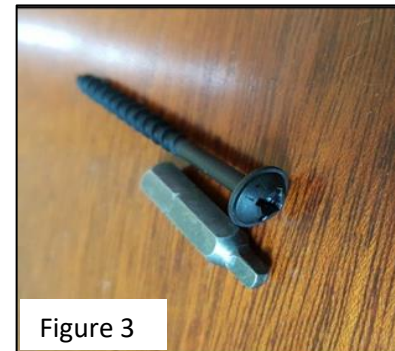
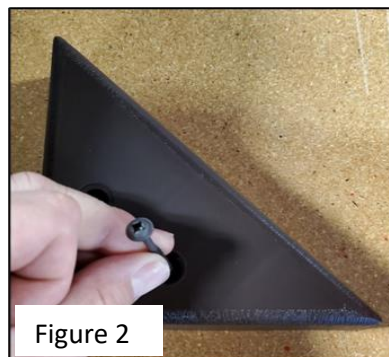
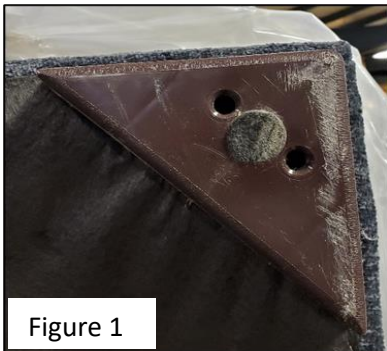
Assembly Instructions

| SKU# | | |
|------------|----------|---------------------------------|
| 10003-5778 | 10177106 | 10003 Sofa Newlyn Coffee/Bangk |
| 10002-5778 | 10277108 | 10002 Love Newlyn Coffee/Bangk |
| 10001-5778 | 10377100 | 10002 Chair Newlyn Coffee |
| 10006-5778 | 10477102 | 10002 Sto Otto Newlyn Coffee |
| 10008-5778 | 10977102 | 10008 SLPR Newlyn Coffee |
| 7070-5778 | 10577104 | 7070 Swivel Chair Newlyn Coffee |
| 10003-5777 | 10177118 | 10003 Sofa Newlyn Cognac |
| 10002-5777 | 10277110 | 10002 Love Newlyn Cognac |
| 10001-5777 | 10377112 | 10001 Chair Newlyn Cognac |
| 10006-5777 | 10477114 | 10006 StoOtt Newlyn Cognac |
| 10008-5777 | 10977114 | 10008 SLPR Newlyn Cognac |
| 7070-5777 | 10577116 | 7070 Swivel Chair Newlyn Cognac |

Manufactured by AMFU for Rooms To Go

| Step | Hardware | QTY |
|------|---|-----|
| 2, 3 | Plastic Pyramid Leg  | 4 |
| 3,4 | #8 (4.17mm Width) 2" Wood Screw  | 8 |
| 6 | Adhesive Felt Pad  | 4 |
| | Assembly Instructions | 1 |

1. Remove hardware from red zip bag.
2. Place leg at one corner inset 1/8" - 1/4" as shown in Figure 1.
3. Place a #8 2" Wood Screw in the two larger holes on the bottom side of the leg, Figure 2.
4. Using a #2 square bit or phillips bit screwdriver (not included) , shown in Figures 3, 4, and 5, turn the screw clock-wise until the leg is snug with the bottom of the piece of furniture. Use caution not to over-tighten. Repeat for the second screw.
5. Repeat steps 2-4 for the remaining 3 corners.
6. Remove adhesive felt pad from paper and apply to the center of the leg, Figure 6.



Hardware Pack Location: Behind pillows attached to cushion/pillow tie.