






Assembly Instructions

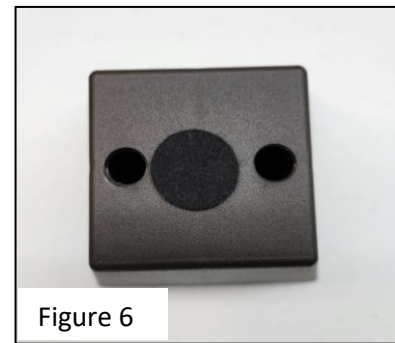
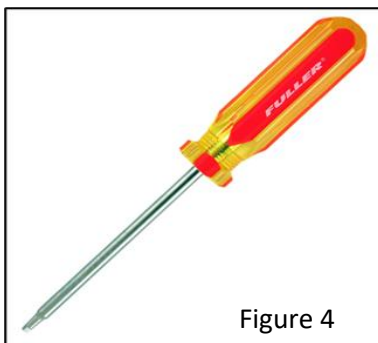
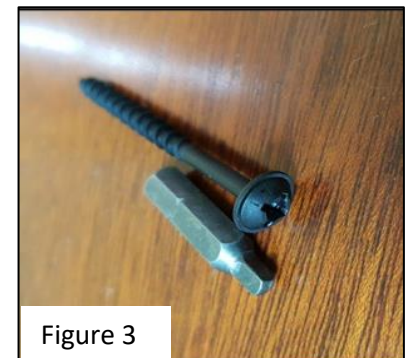
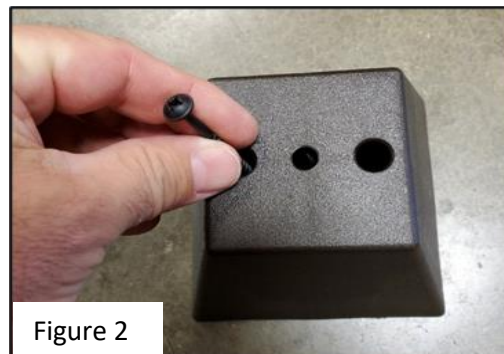
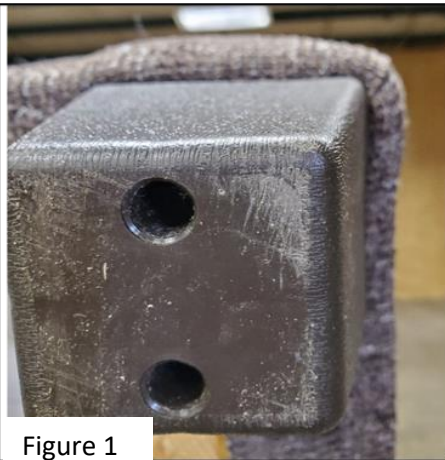
SKU# 10102921, 10202923, 10302925,
10402927, 10902927, 10102933,
10202935, 10302937, 10402939, 10902939

10113114	10113126
10213116	10213128
10313118	10313120
10413110	10413122
10913110	10913122

Manufactured by AMFU for Rooms To Go

Step	Hardware	QTY
2, 3	Plastic Pyramid Leg 	4
3,4	2" Wood Screw 	8
6	Adhesive Felt Pad 	4
	Assembly Instructions	1

1. Remove hardware from red zip bag.
2. Place leg at one corner inset 1/8" - 1/4" as shown in Figure 1.
3. Place a 2" Wood Screw in the two larger holes on the bottom side of the leg, Figure 2.
4. Using a #2 square bit or phillip bit screwdriver(not included), shown in Figures 3, 4, and 5, turn the screw clock-wise until the leg is snug with the bottom of the piece of furniture. Use caution not to over-tighten. Repeat for the second screw.
5. Repeat steps 2-4 for the remaining 3 corners.
6. Remove adhesive felt pad from paper and apply to the center of the leg, Figure 6.



Hardware Pack Location: Behind pillows attached to cushion/pillow tie.

Version #1

Date Created: 09/06/2023