






Assembly Instructions

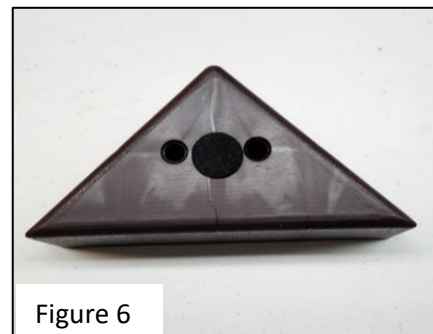
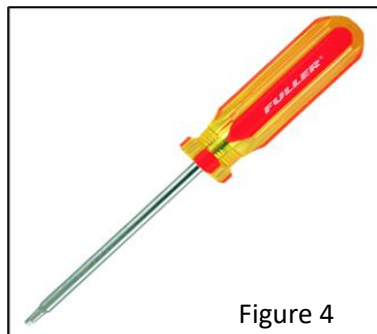
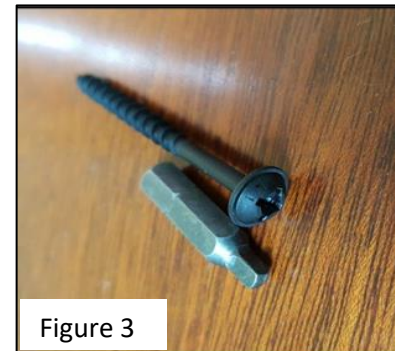
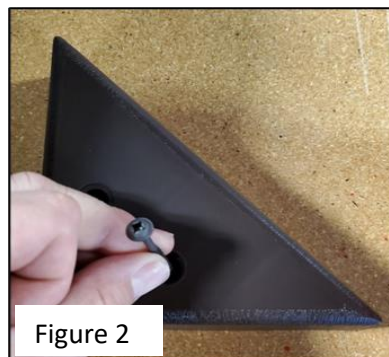
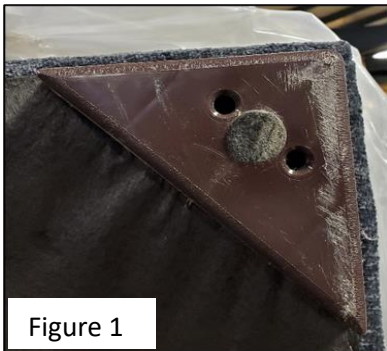
SKU#

10112643	10158207	10177118
10212645	10958203	10277110
10312647	10258209	10377112
10412649	10358201	10477114
10912649	10458203	10977114
10112631	10158219	10577104
10212633	10958215	10177106
10312635	10258211	10277108
10412637	10358213	10377100
10912637	10458215	10477102
		10977102
		10577116

Manufactured by AMFU for Rooms To Go

Step	Hardware	QTY
2, 3	Plastic Pyramid Leg 	4
3,4	#8 (4.17mm Width) 2" Wood Screw 	8
6	Adhesive Felt Pad 	4
	Assembly Instructions	1

1. Remove hardware from red zip bag.
2. Place leg at one corner inset 1/8" - 1/4" as shown in Figure 1.
3. Place a #8 2" Wood Screw in the two larger holes on the bottom side of the leg, Figure 2.
4. Using a #2 square bit or phillips bit screwdriver (not included) , shown in Figures 3, 4, and 5, turn the screw clock-wise until the leg is snug with the bottom of the piece of furniture. Use caution not to over-tighten. Repeat for the second screw.
5. Repeat steps 2-4 for the remaining 3 corners.
6. Remove adhesive felt pad from paper and apply to the center of the leg, Figure 6.



Hardware Pack Location: Behind pillows attached to cushion/pillow tie.