



Manufactured for Rooms To Go

ASSEMBLY INSTRUCTIONS

MODEL : F4014SS K (2S)

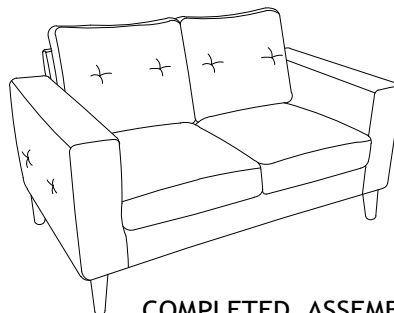
SKU#10241456, 10241468, 10241470, 10241482

Vendor code : FFLA

Thanks you for purchasing this quality product. Be sure to lay all components on a soft and clean surface before assembly in order to avoid components from being scratched.

CAUTIONS :

1. Check contents against list for quantity.
2. Familiarize yourself with the components and hardware by reviewing the Assembly Instructions.
3. Do not over tightened the screws and bolts as it may damage the threads.
4. Keep all hardware parts out of the reach of children.
5. Please "LIFT UP & MOVE" the sofa when ever you want to shift it.



COMPLETED ASSEMBLY

PARTS LIST

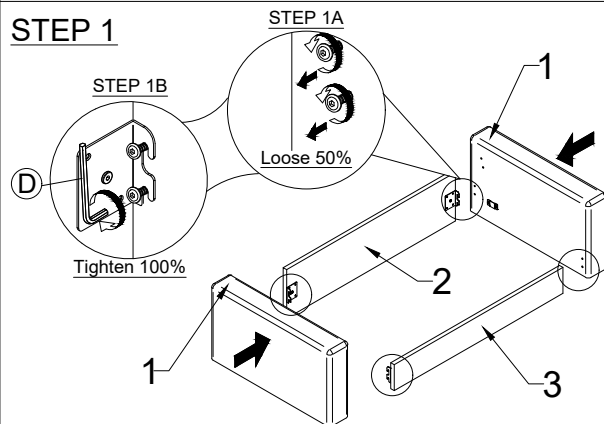
NO	DESCRIPTION	QTY
1	ARM	2 PCS
2	BACK RAIL	1 PC
3	FRONT RAIL	1 PC
4	BACKREST	1 PC
5	SEAT	1 PC
6	BACK CUSHION	2 PCS

HARDWARE LIST

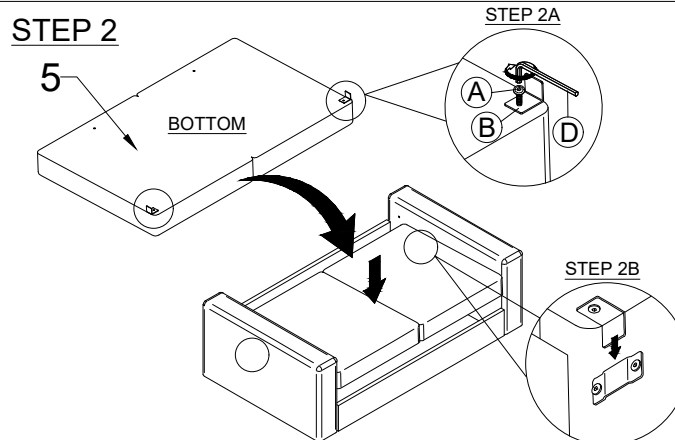
NO	DESCRIPTION	QTY
A	M6 X 25MM JCBC SCREW	3 PCS
B	L- BRACKET (1 HOLE)	2 PCS
C	LEG	4 PCS
D	M4 ALLEN KEY	1 PC

* PLEASE UNTIE THE STRING FROM THE ARM CONNECTOR FOR 'SOFA LEGS' HARDWARE IN RED PLASTIC BAG BEFORE LIFTING UP THE ARM.

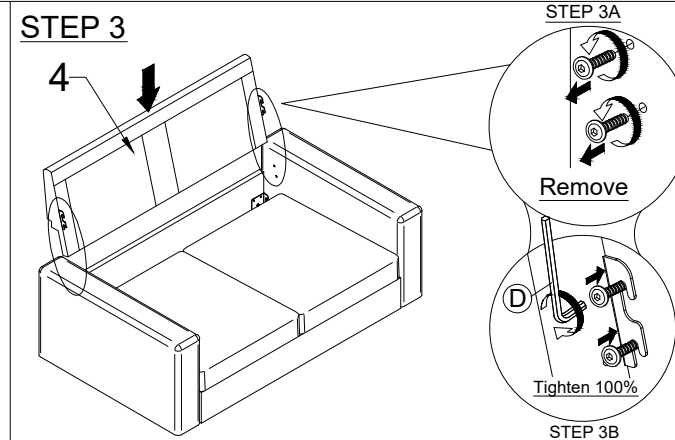
STEP 1



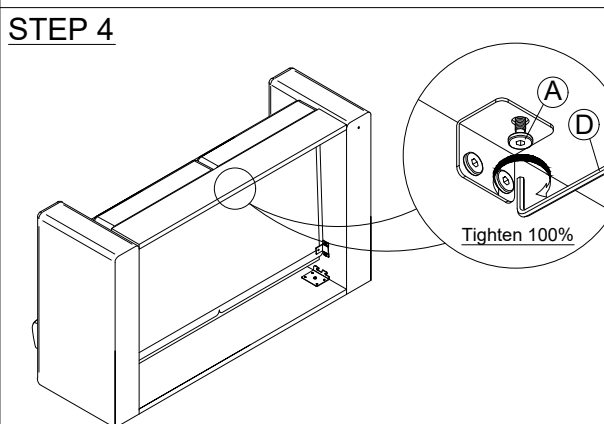
STEP 2



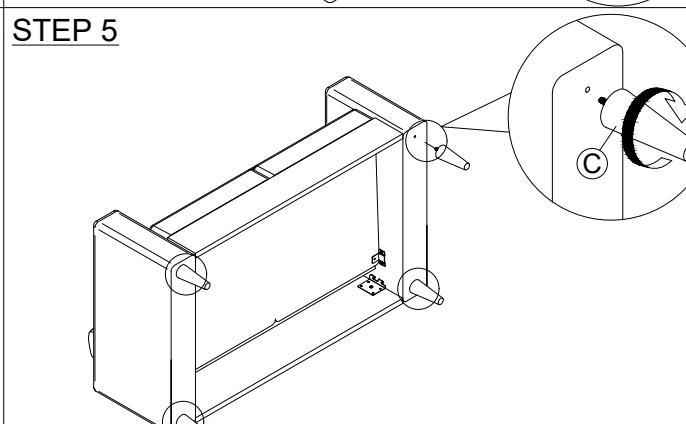
STEP 3



STEP 4



STEP 5



STEP 6

