

Vendor: SFAM

LEGS ASSEMBLY INSTRUCTIONS

Creation Date: 11/February/2025
Revision Date: 3/April/2025

INCLUDED HARDWARE

4 WOOD LEGS
8X ALLEN 4mm FLAT HEAD
8x3 SCREWS

TPI (THREADS PER INCH):
19



SKU:
10960917
10260913
10360915
10460917
10560919

SKU:
10960929
10260925
10360927
10460929
10160923
10160911

1



BACK WOOD LEG



CENTER WOOD LEG



FRONT WOOD LEG



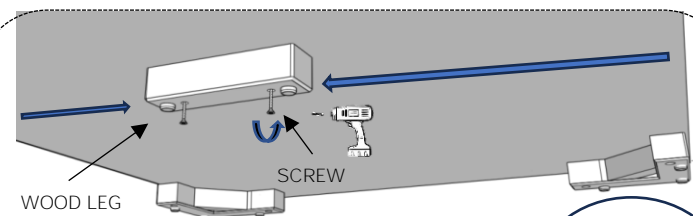
4



BACK WOOD LEG

FRONT WOOD LEG

2



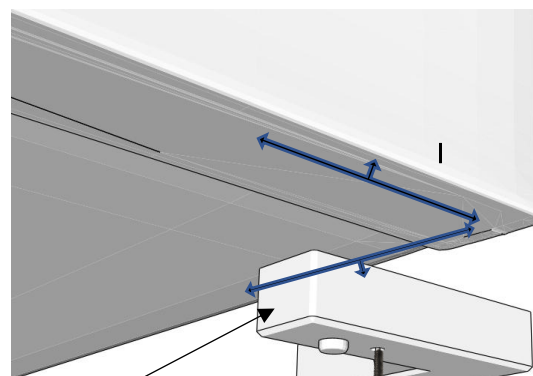
- (A) Locate the leg in the center of the furniture as shown in the image.
- (B) Use the 2 screws and with a philips screwdriver tighten these legs according to the Picture 2.



PLACE THE SCREWS IN THE PERFORATION

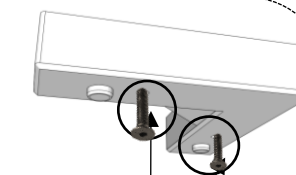
The wood leg's package does not include drill.

3



WOOD LEG

SCREW



PLACE THE SCREWS IN THE SCREW HOLES.



- (A) Place the leg 1/4" of space from the edge of the furniture.
- (B) Use allen key as shown to secure screws.