






Assembly Instructions

RTG SKU # 10425177

Manufactured by AMFU for Rooms To Go

Step	Hardware	QTY
2, 3	Plastic Pyramid Leg 	4
3,4	#8 (4.17mm Width) 2" Wood Screw 	8
6	Adhesive Felt Pad 	4
	Assembly Instructions	1

1. Remove hardware from red zip bag.
2. Place leg at one corner inset 1/8" - 1/4" as shown in Figure 1.
3. Place a #8 2" Wood Screw in the two larger holes on the bottom side of the leg, Figure 2.
4. Using a #2 square bit or phillip bit screwdriver(not included), shown in Figures 3, 4, and 5, turn the screw clock-wise until the leg is snug with the bottom of the piece of furniture. Use caution not to over-tighten. Repeat for the second screw.
5. Repeat steps 2-4 for the remaining 3 corners.
6. Remove adhesive felt pad from paper and apply to the center of the leg, Figure 6.

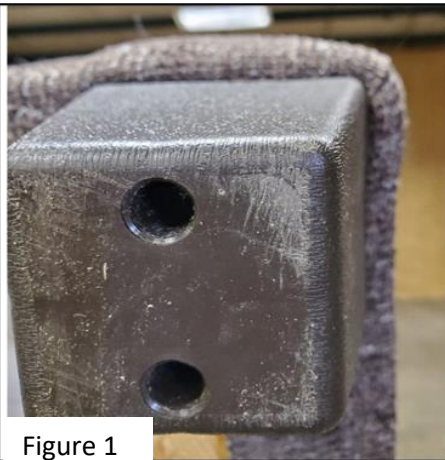


Figure 1



Figure 2

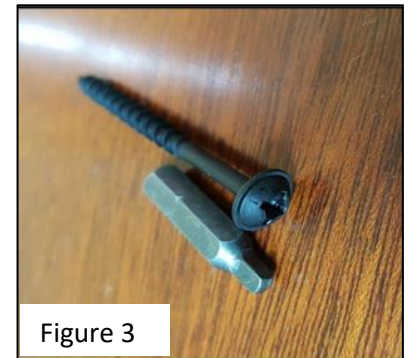


Figure 3

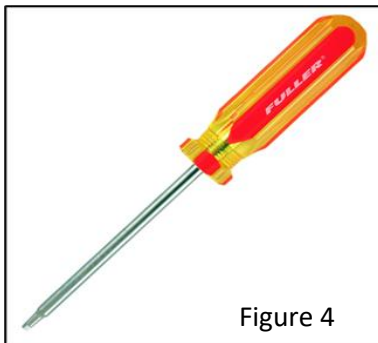


Figure 4



Figure 5

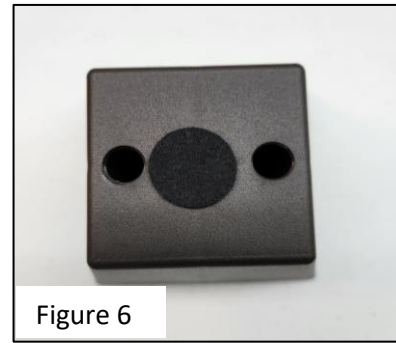


Figure 6

Hardware Pack Location: Behind pillows attached to cushion/pillow tie.

SKUS Cont...

3103-8625-3433	10163119
3102-8625-3433	10263111
3101-8625-3433	10363113
3105-8625-2433	10463115
3108-8625-3433	10963115
3103-8626-3433	10163107
3102-8626-3433	10263109
3101-8626-3433	10363101
3105-8626-3433	10463103
3108-8626-3433	10963103
5271-3433	10563105

25003-2386	10125171
25002-2386	10225173
25001-2386	10325175
25004-2386	10425175
25008-2386	10925177
25003-2385	10125169
25002-2385	10225161
25001-2385	10325163
25004-2385	10425165
25008-2385	10925165