






# Assembly Instructions

3103-8625	10113114	3103-8626	10113126
3102-8625	10213116	3102-8626	10213128
3101-8625	10313118	3101-8626	10313120
3105-8625	10413110	3105-8626	10413120
3108-8625	10913110	3108-8626	10913122

**SKU#** 10102921, 10202923, 10302925, 10402927, 10902927, 10102933, 10202935, 10302937, 10402939, 10902939

10113114	10113126
10213116	10213128
10313118	10313120
10413110	10413122
10913110	10913122

Manufactured by AMFU for Rooms To Go

Step	Hardware	QTY
2, 3	Plastic Pyramid Leg 	4
3,4	2" Wood Screw 	8
6	Adhesive Felt Pad 	4
	Assembly Instructions	1

1. Remove hardware from red zip bag.
2. Place leg at one corner inset 1/8" - 1/4" as shown in Figure 1.
3. Place a 2" Wood Screw in the two larger holes on the bottom side of the leg, Figure 2.
4. Using a #2 square bit or phillip bit screwdriver(not included), shown in Figures 3, 4, and 5, turn the screw clock-wise until the leg is snug with the bottom of the piece of furniture. Use caution not to over-tighten. Repeat for the second screw.
5. Repeat steps 2-4 for the remaining 3 corners.
6. Remove adhesive felt pad from paper and apply to the center of the leg, Figure 6.

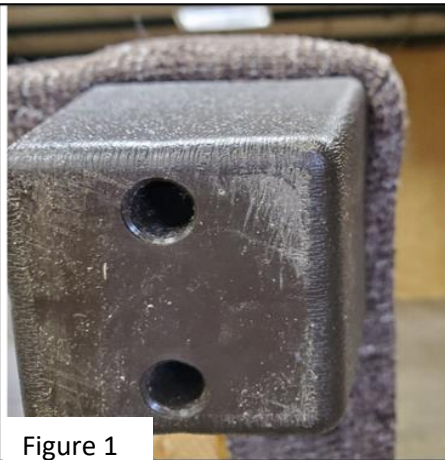


Figure 1

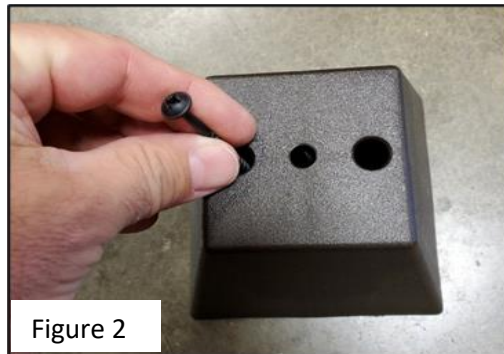


Figure 2

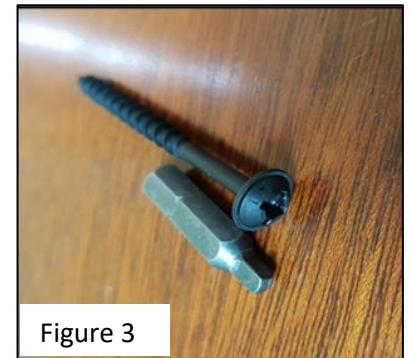


Figure 3

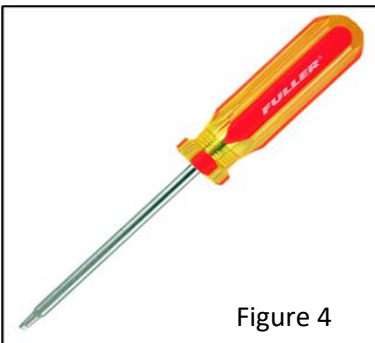


Figure 4



Figure 5

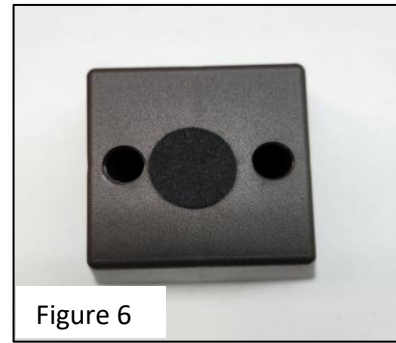


Figure 6

**Hardware Pack Location: Behind pillows attached to cushion/pillow tie.**

**SKUS Cont...**

3103-8625-3433	10163119
3102-8625-3433	10263111
3101-8625-3433	10363113
3105-8625-2433	10463115
3108-8625-3433	10963115
3103-8626-3433	10163107
3102-8626-3433	10263109
3101-8626-3433	10363101
3105-8626-3433	10463103
3108-8626-3433	10963103
5271-3433	10563105