

## ASSEMBLY INSTRUCTION



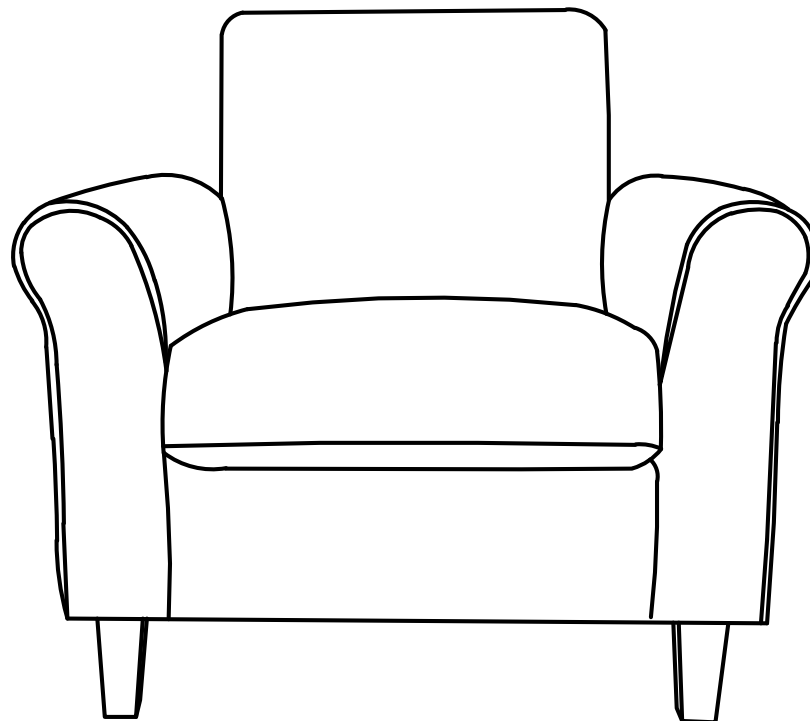
MANUFACTURED FOR ROOMS TO GO

VENDOR CODE: TXNS

STOCK#:8200-50 PUSH BACK RECLINER

Update: 5/10/2025 Version #: 1

SKU#:10598209



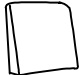
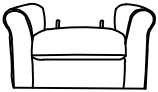





MANUFACTURED FOR ROOMS TO GO

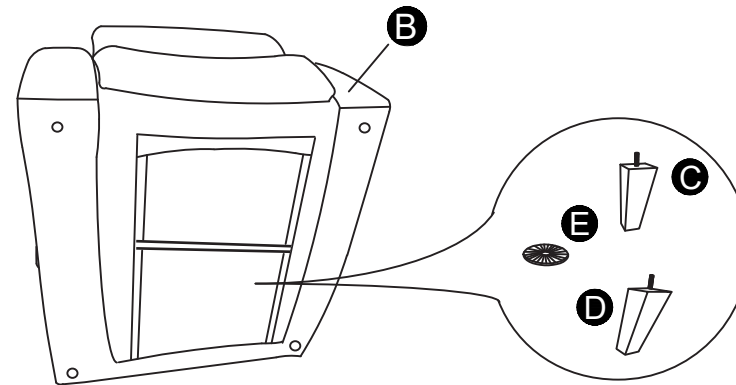
## Part Location

VENDOR CODE: TXNS  
STOCK#:8200-50 PUSH BACK RECLINER  
Update: 5/10/2025 Version #: 1

SKU#:10598209

TOOLS REQUIRED: NO			
PART LIST			
NO	Description	Sketch	Quantity
A	BACK		1
B	SEAT FRAME		1
C	FRONT LEGS		2
D	REAR LEGS		2
E	PLASTIC WASHERS		4

Front and Back Legs (C & D) and Washers (E) Are Stored Underneath Seat





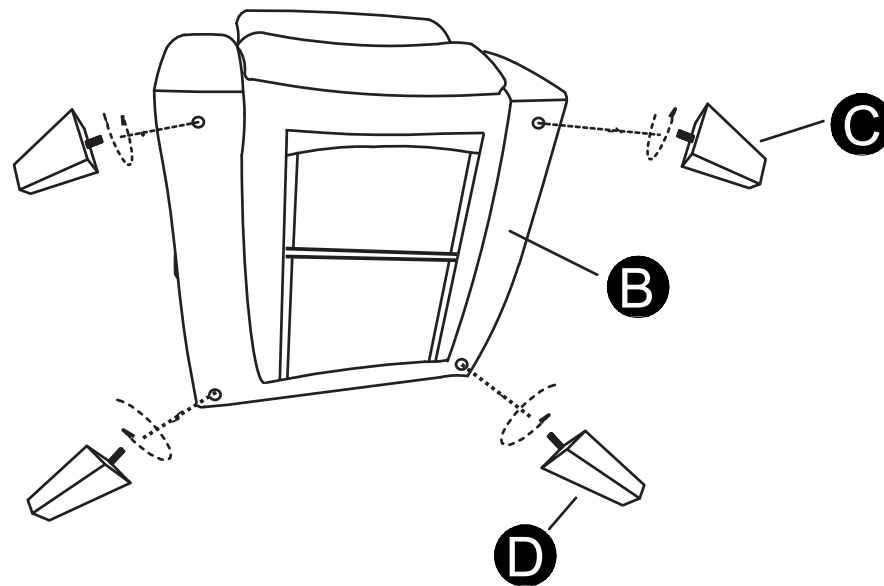
MANUFACTURED FOR ROOMS TO GO

## ASSEMBLY

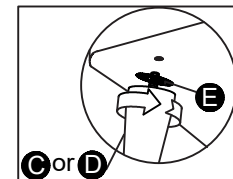
VENDOR CODE: TXNS  
STOCK#:8200-50 PUSH BACK RECLINER  
Update: 5/10/2025 Version #: 1

SKU#:10598209

### Step 1 Tighten Front Legs (C) and Rear Legs (D) To Seat (B)



#### OPTIONAL



Adjust each leg by inserting a washer (E) to make it even and level with the floor.



MANUFACTURED FOR ROOMS TO GO

## ASSEMBLY

VENDOR CODE: TXNS

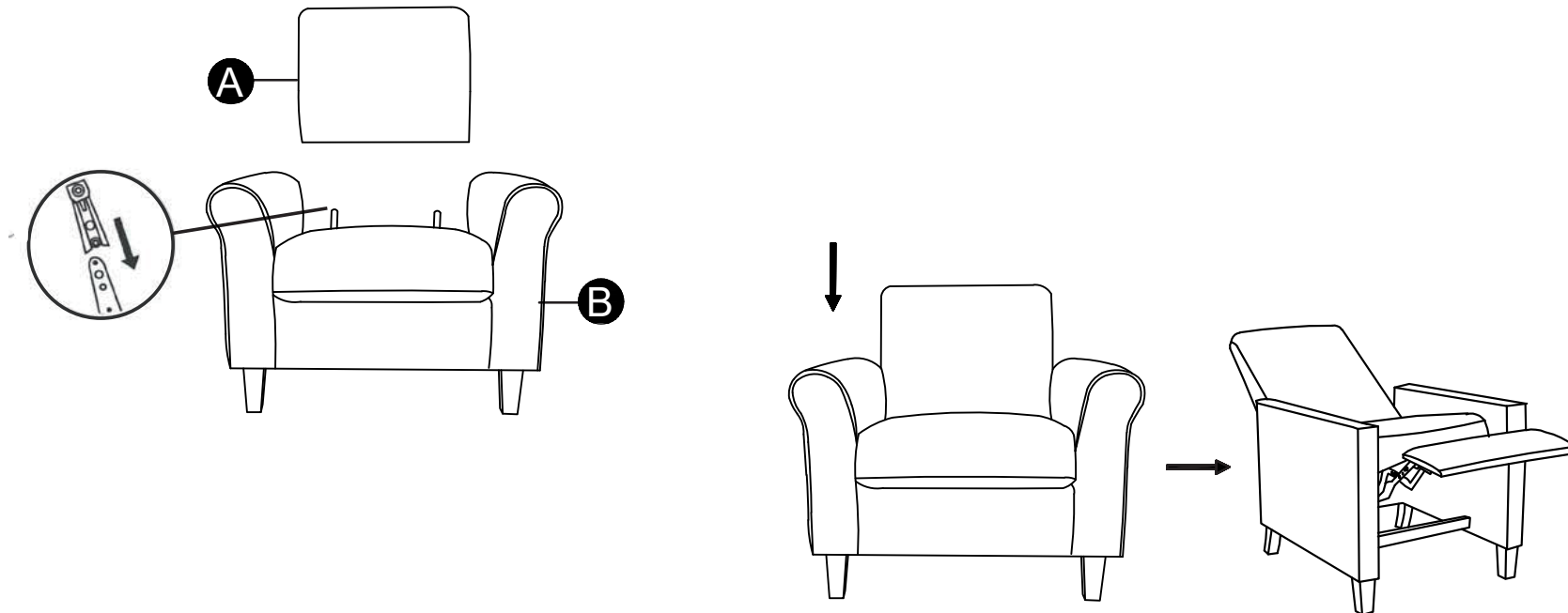
STOCK#:8200-GS-50PUSH BACK RECLINER

Update: 5/10/2025 Version #: 1

SKU#:10598209

### Step 2

Align Brackets On Seat (B) With Brackets on Back (A)



### Step 3

Push Down On Back (A) Until Bracket Locks. Then Chair Is Ready For Reclining.