

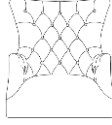







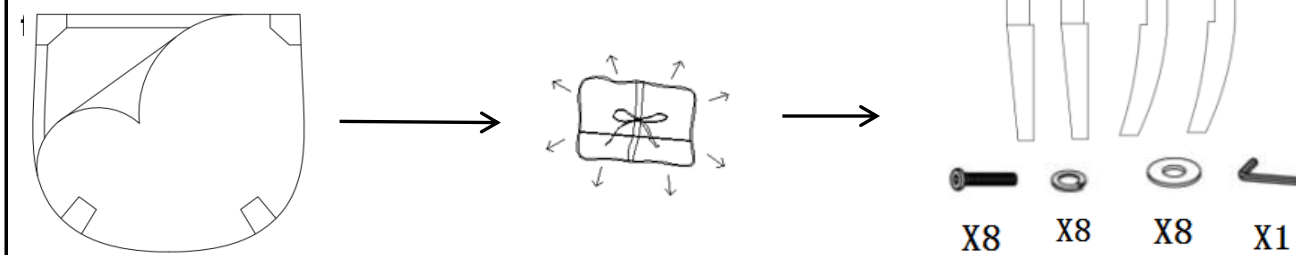
MADISON PARK

Assembly Instruction--Accent Chair

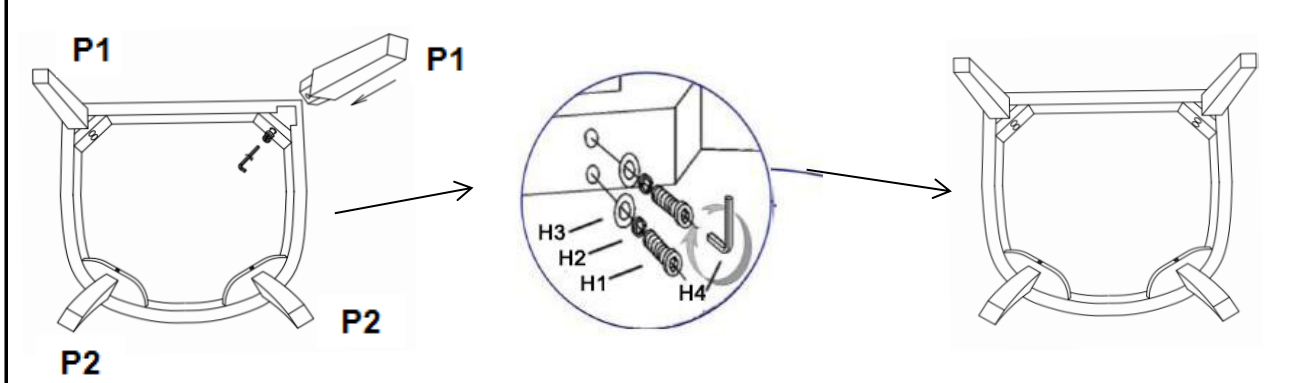
PARTS #	PARTS NAME	DRAWING	QTY
P1	FRONT LEGS		2
P2	BACK LEGS		2
P3	Chair		1
P4	Lumbar Pillow		1

Hardware#	PARTS NAME	DRAWING	QTY
H1	Bolts φ5/16*2-3/8"		8
H2	Lock Washers φ5/16"		8
H3	Flat Washers φ5/16"		8
H4	Allen Wrench φ5/16"		1

1. Turn the chair upside down and lay on protective carpet, take out the legs and hardware



2. Using bolts (H1), lock washers (H2), flat washers (H3), connect legs(P1,P2) to chair (P3). Tighten bolts (H1) with Allen Wrench (H4).



3. Place chair upright on a level surface. Put the lumbar pillow(P4) on it. Assembly is complete.

