

60699 Recliner & Ottoman



Estimated Time for Assembly

10:00 - 15:00



Weight Limitation

300 lbs

Tools Needed

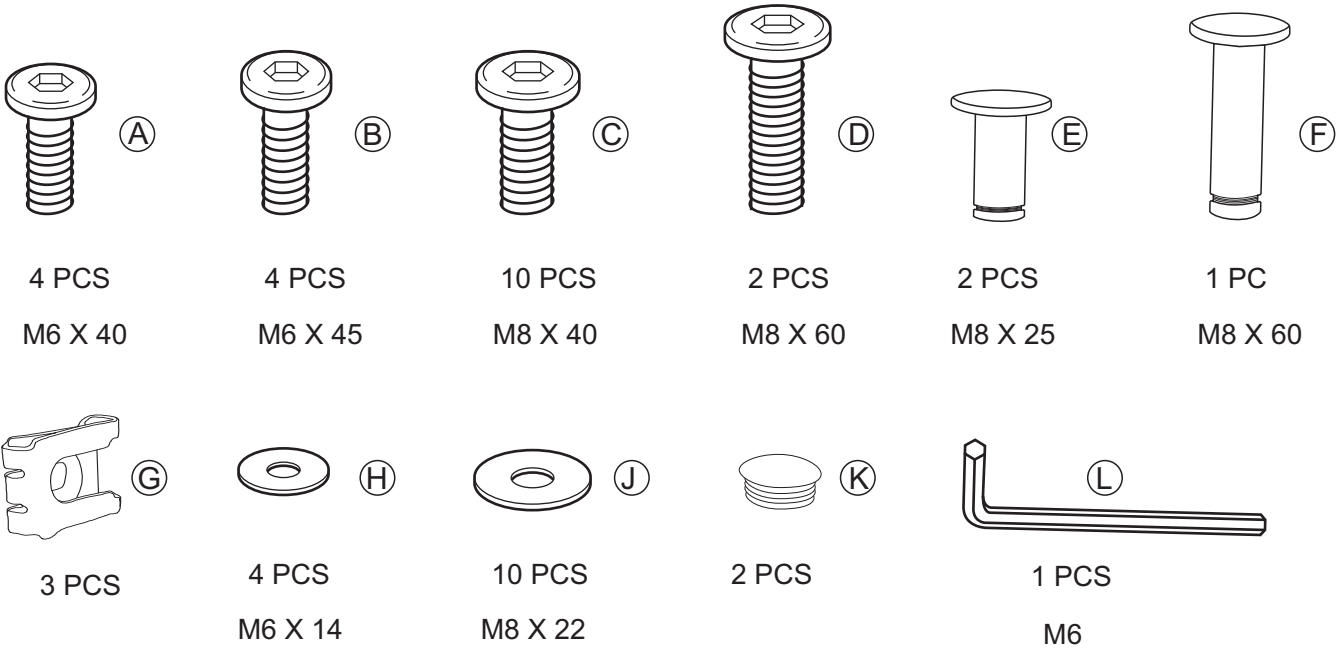
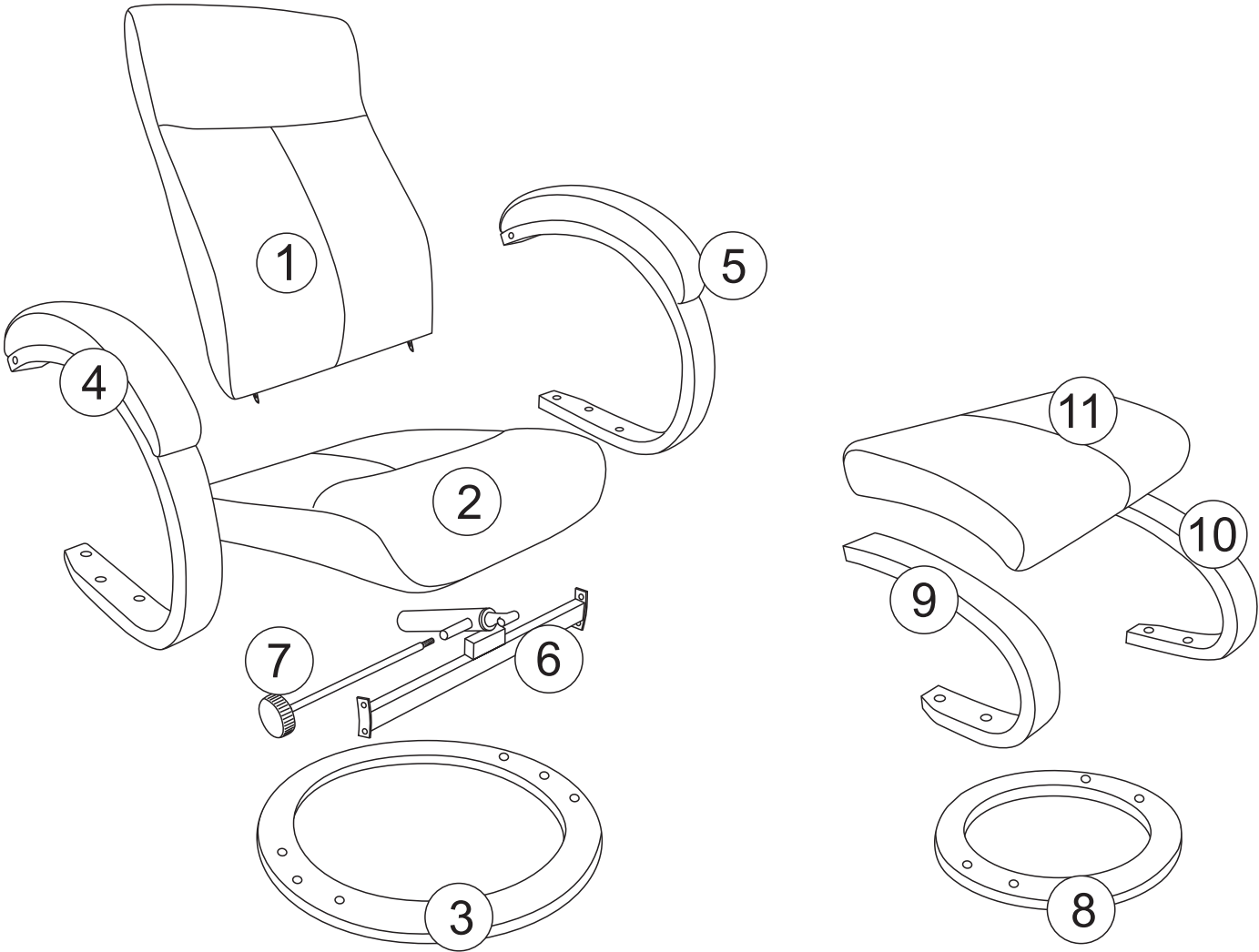
All necessary tools are included in the package.

PLEASE CONTACT US FOR QUESTIONS

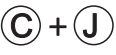

Email our support team: help@ovis.co

- Read all instructions before assembling this product.
- Check this product for damaged hardware, loose joints, missing parts, or sharp edges after assembly and frequently during use.
- Do not use this product if any parts are missing, damaged, or broken.
- Properly discard all packaging materials after assembly is complete.
- This product contains small parts. Keep small parts out of children's reach during assembly.
- This chair is designed to be used by one individual at a time.
- When placing furniture on non-carpeted flooring, we recommend the use of floor protection such as an area rug or furniture pads.
- The maximum weight capacity of this chair is 300 lbs.
- Do not use this chair near fire or water.
- This product has moving parts, serious injuries can occur if not used appropriately.
- Do not sit on the edge of the seat, armrests, or backrest.
- Do not jump on chair.
- Do not use the chair as a step stool.
- Do not leave children unattended on or beside the chair.
- Do not let children play on or near the chair when in use. Serious injury can occur.

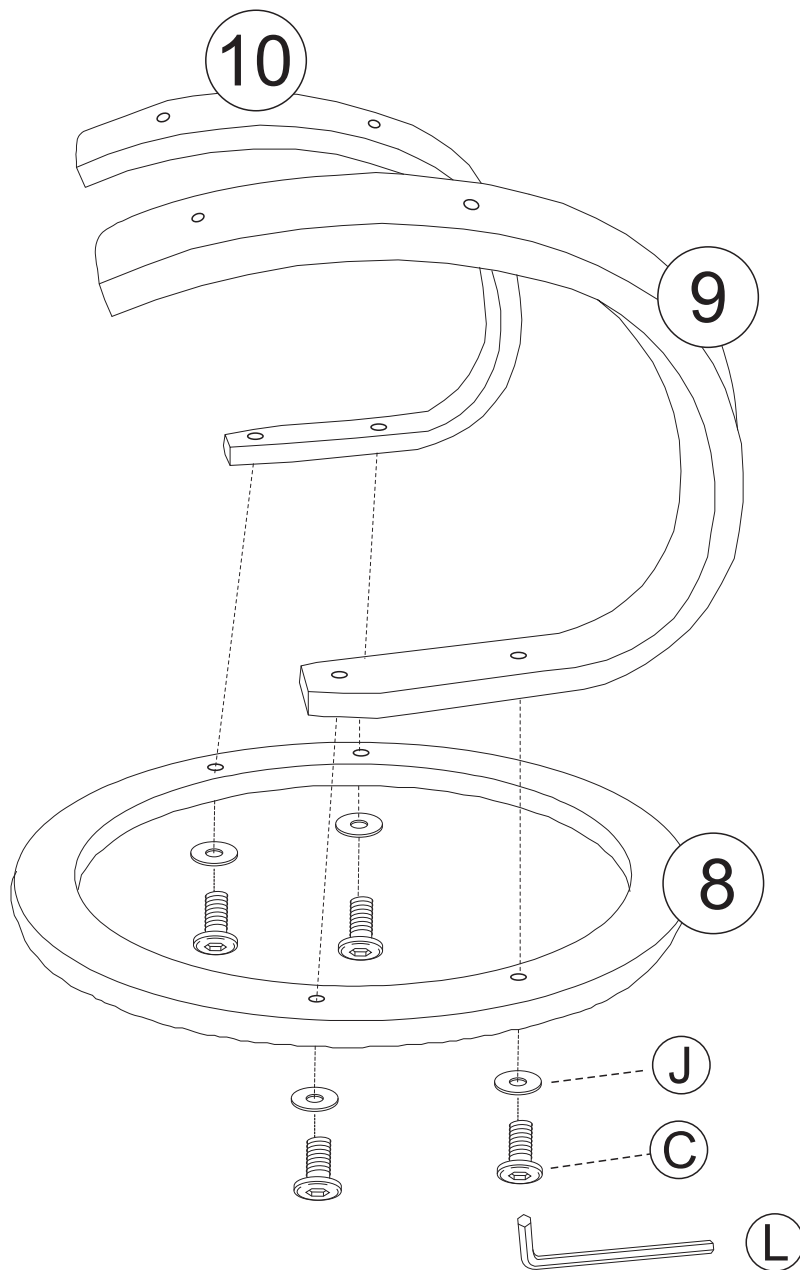
PACKAGE CONTENT



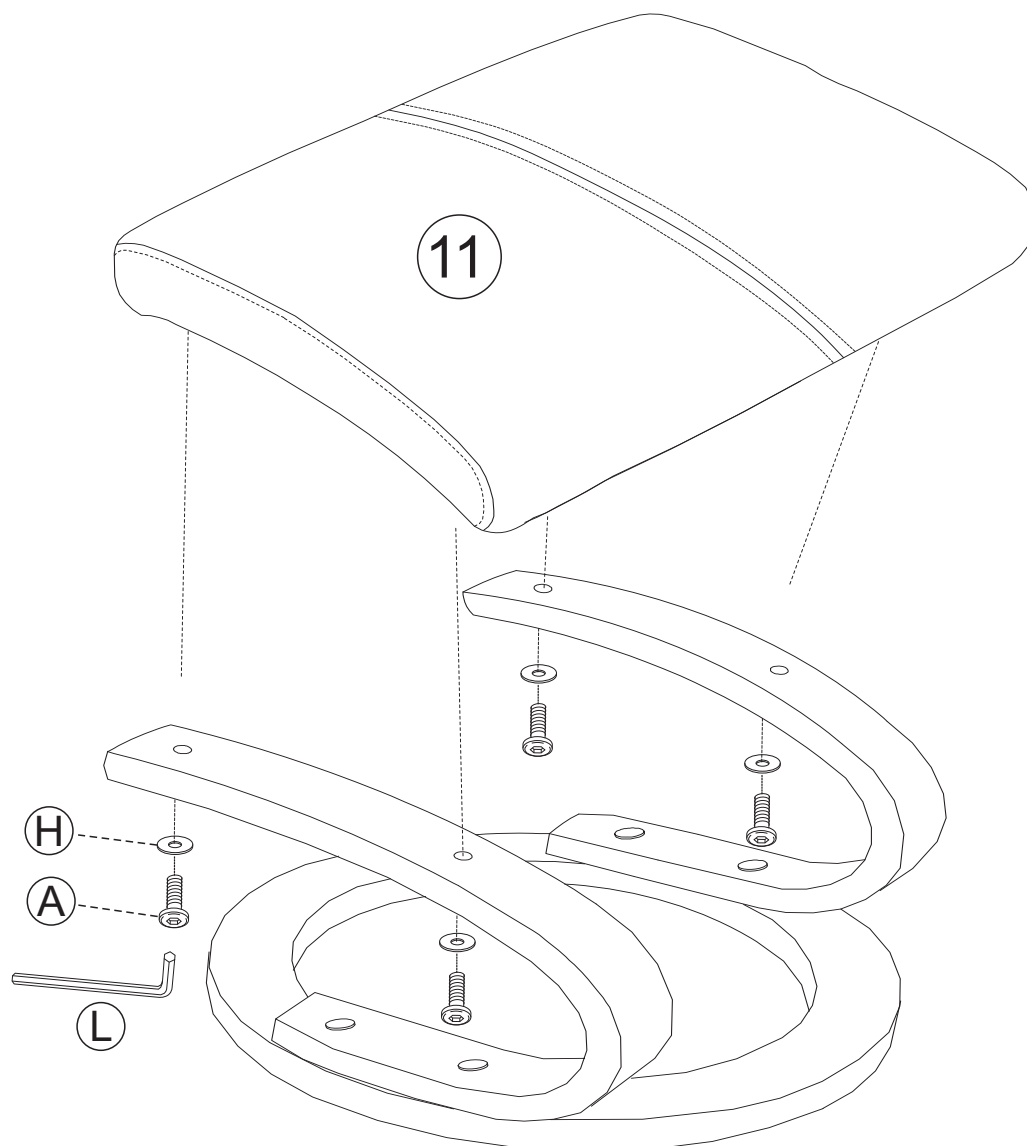
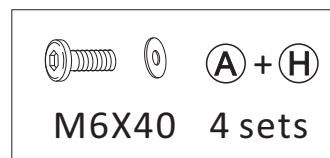
1



M8X40 4 sets

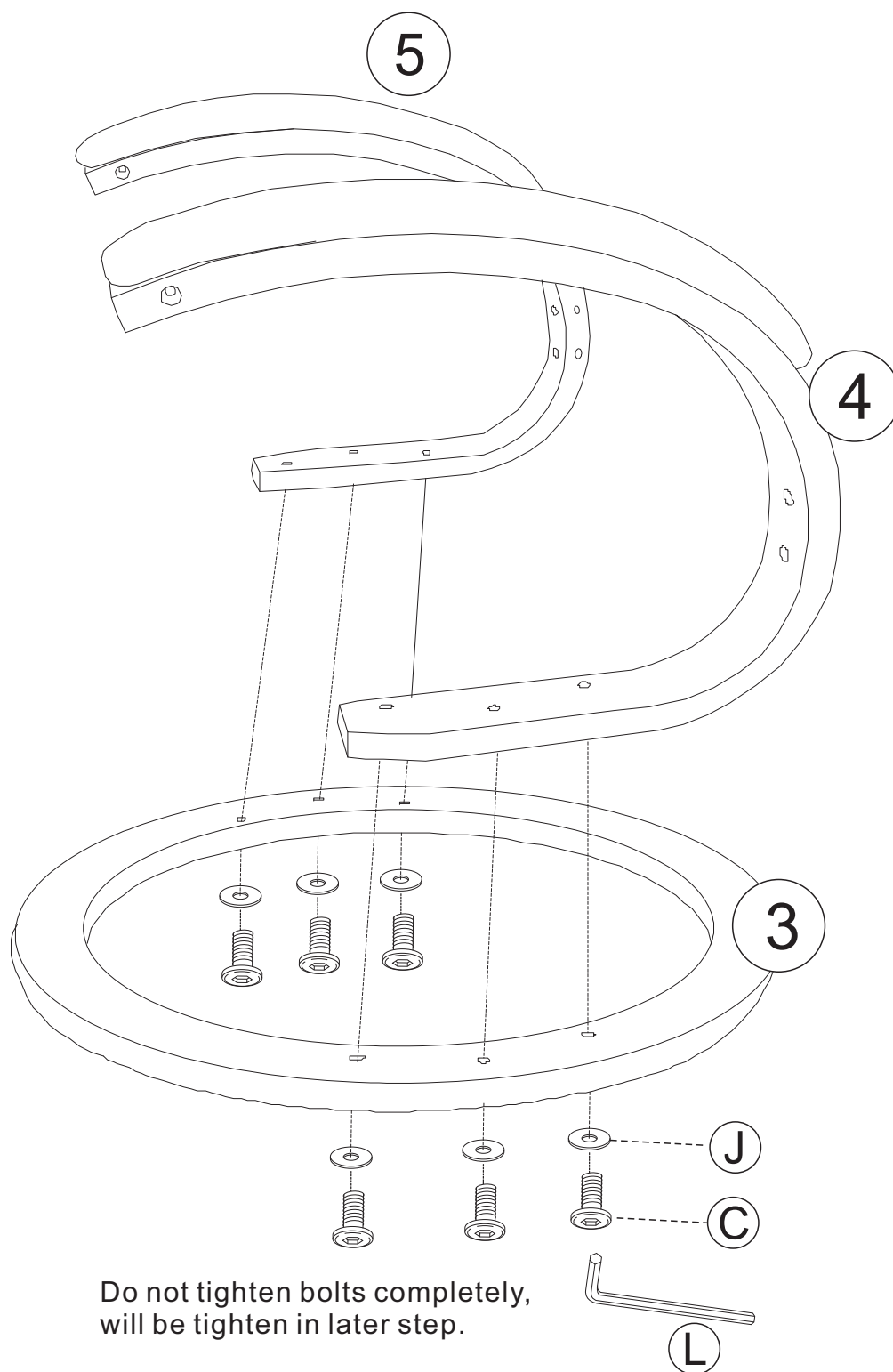
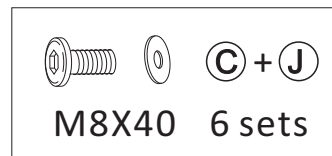


2

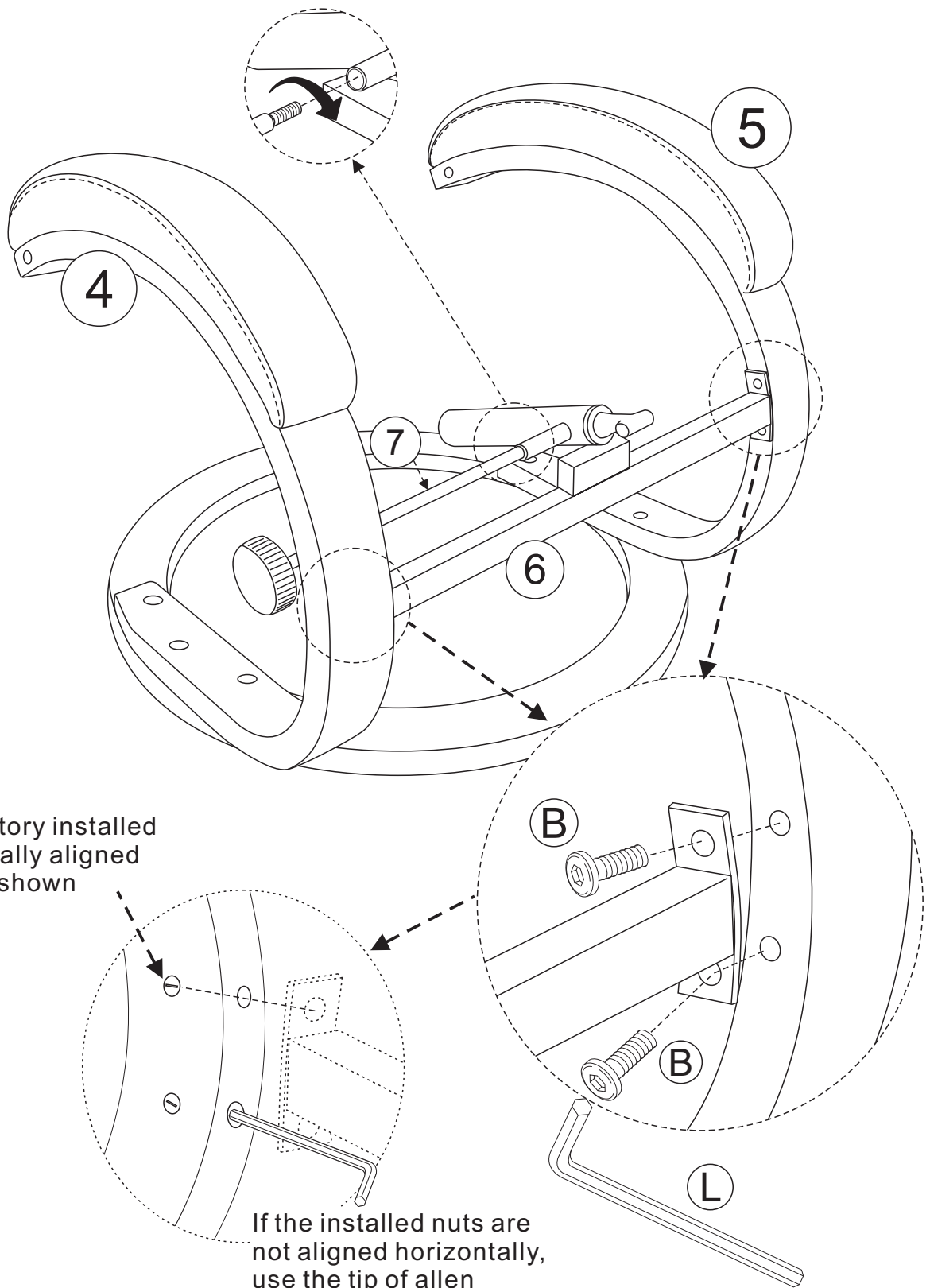
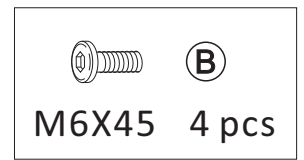


OTTOMAN FINISHED !

3



4

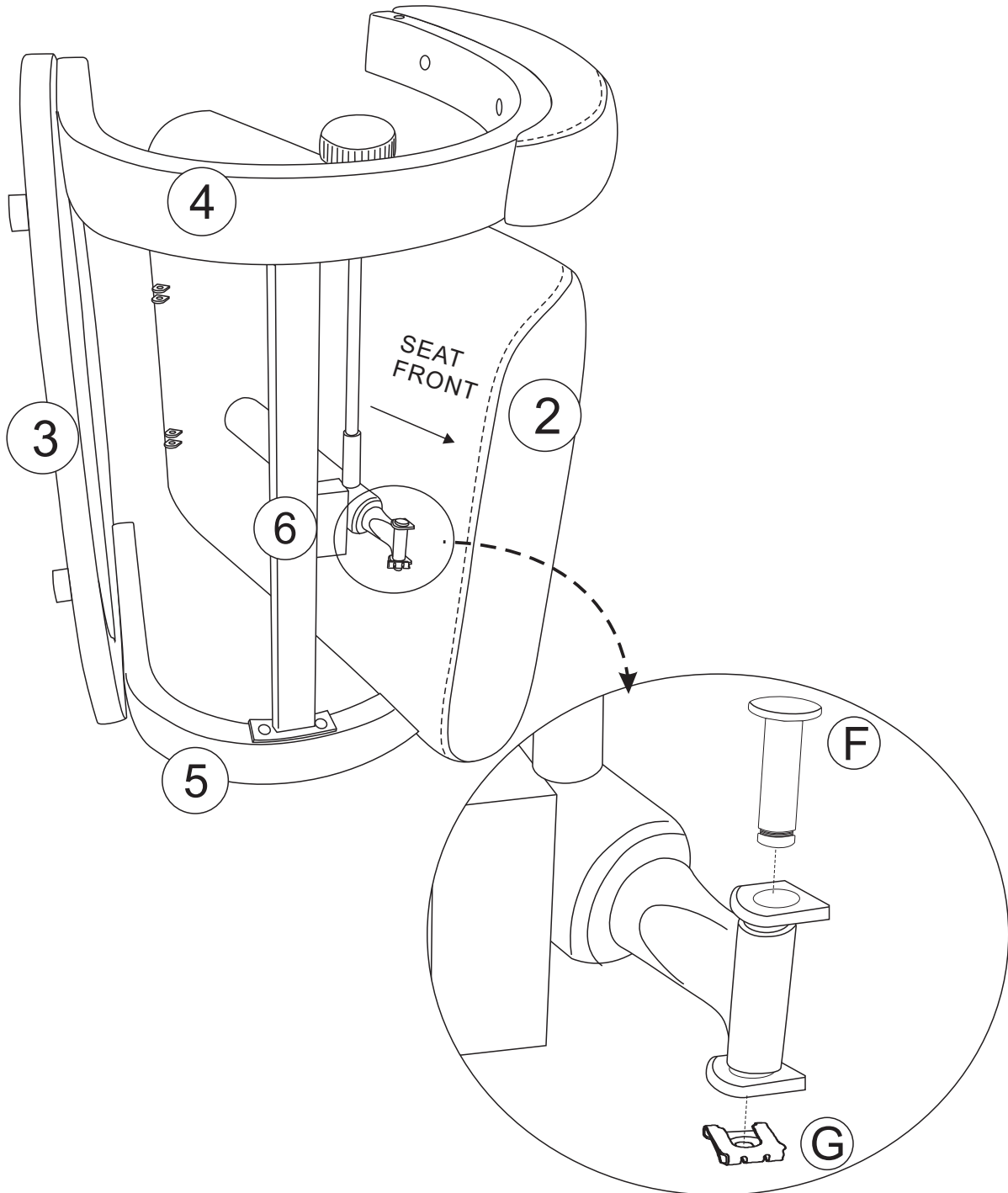
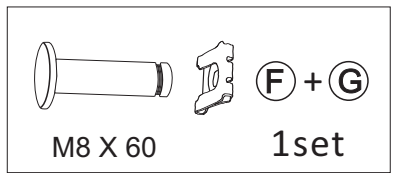


Make sure factory installed nut is horizontally aligned for "B" bolt as shown

If the installed nuts are not aligned horizontally, use the tip of allen wrench to adjust alignment

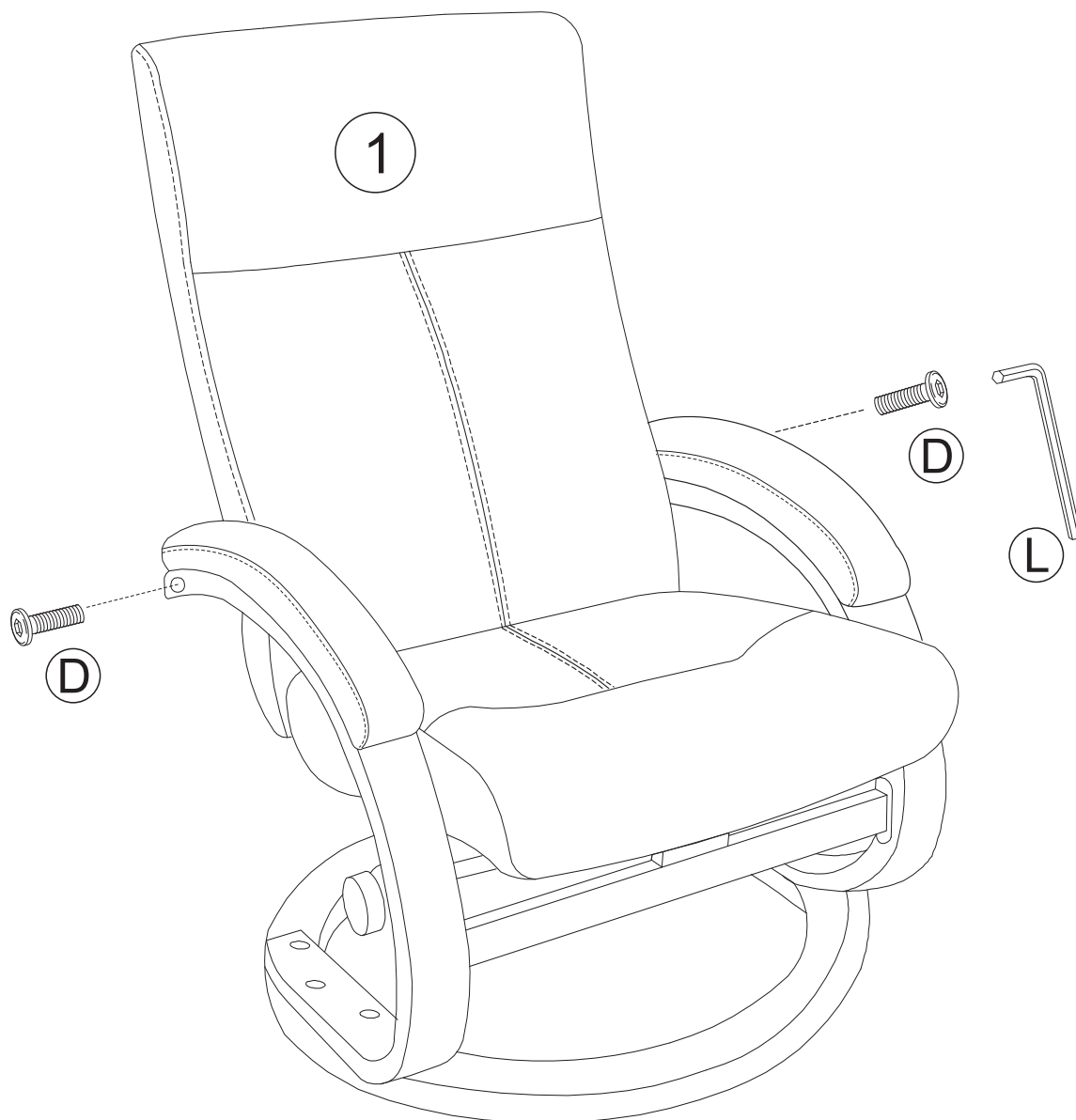
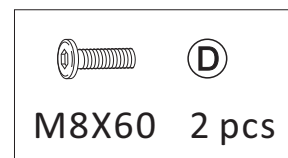
Tighten all bolts in this step

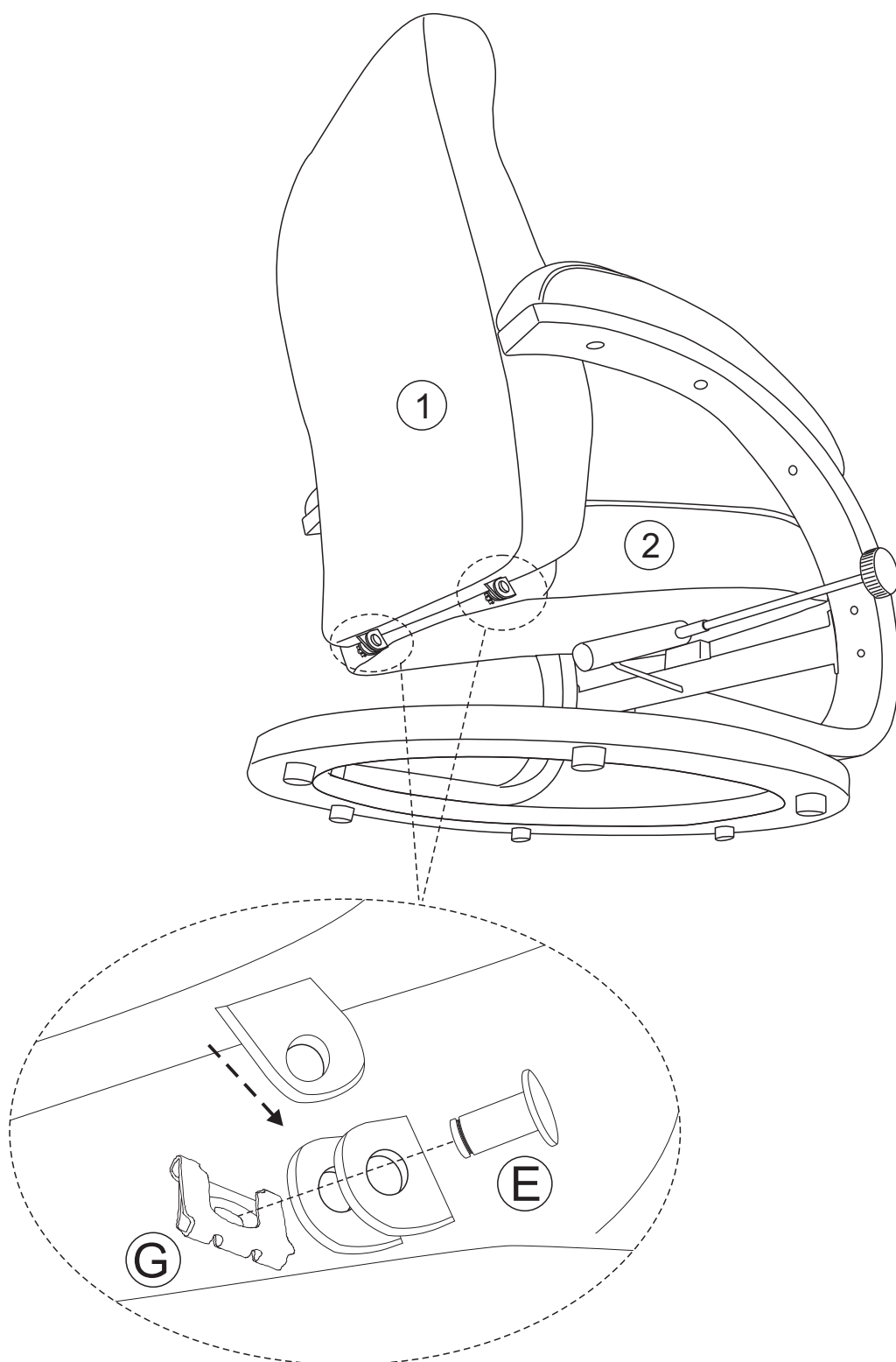
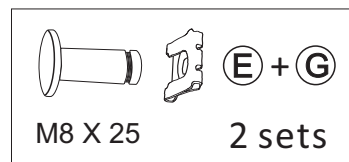
5



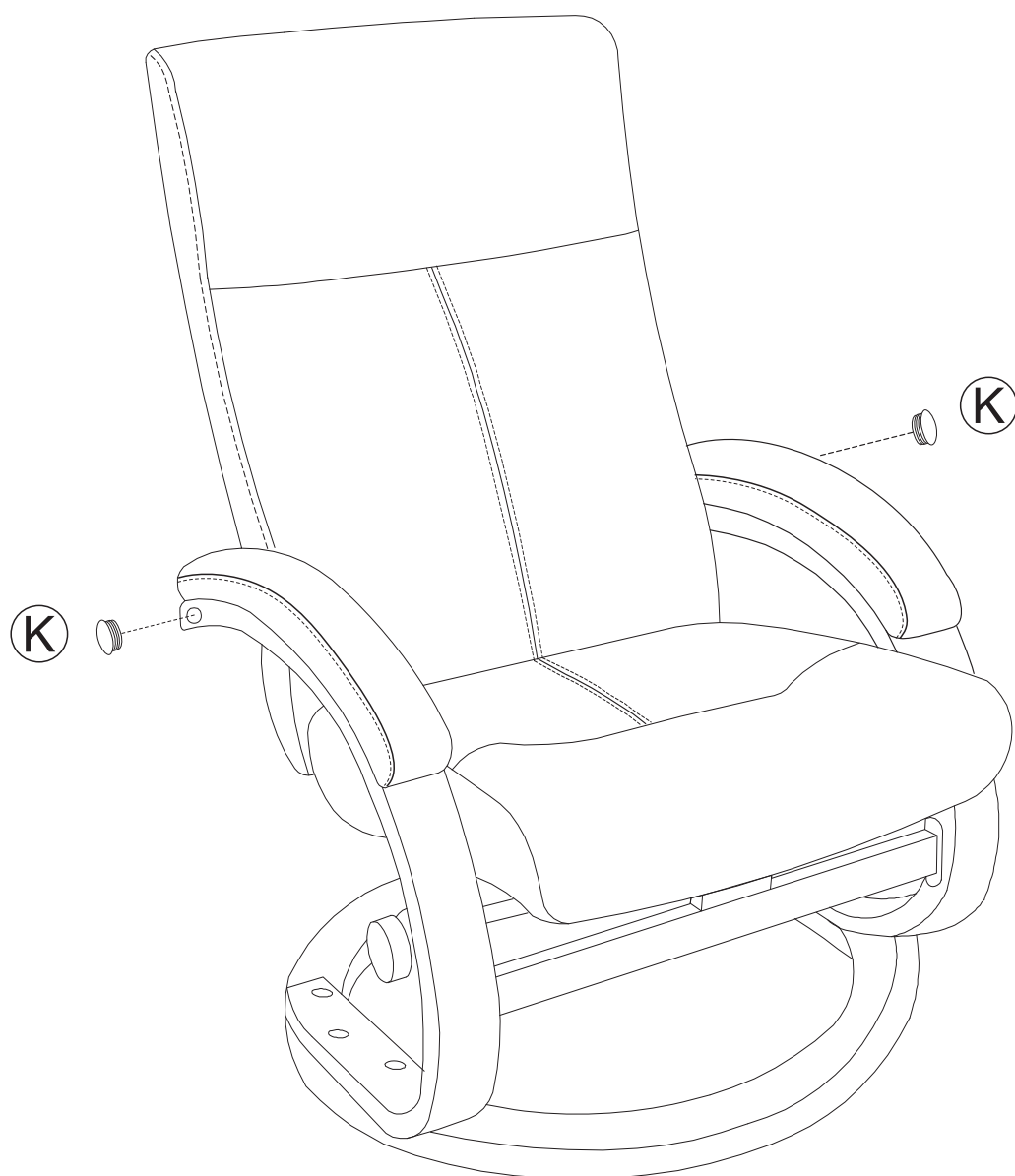
“F” buckle into “G”

6

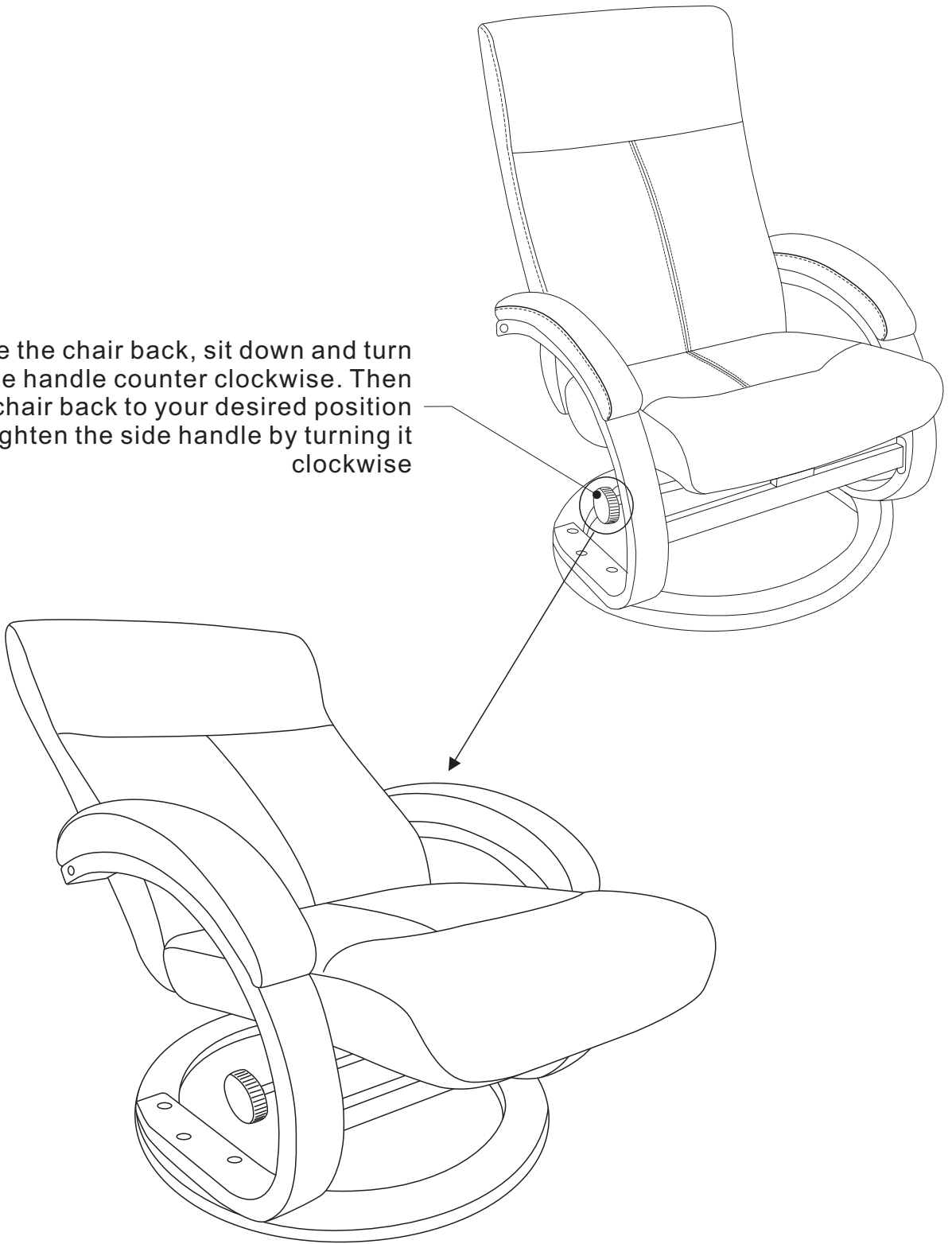




“E” buckle into “G”



To recline the chair back, sit down and turn the side handle counter clockwise. Then adjust the chair back to your desired position and retighten the side handle by turning it clockwise



FINISHED !

FOR ADDITIONAL HELP:

Email our support team: help@ovis.co

THANK YOU FOR YOUR PURCHASE!