

La-Z-Boy Power Recliner & Headrest

Assembly Instructions

Pairing the Wireless Remote

Issue Date: 2/24/2026 Version 3

Vendor: LAZY

RTG Sku #

18505202	18508068	18527789
18505303	18508070	18528072
18507636	18508107	18528084
18507648	18508119	18528096
18507802	18508121	18528109
18507814	18510784	18549040
18507826	18510796	18549052
18507888	18527169	18549064
18507890	18527171	18549076
18508056	18527777	

(scroll down to page 2 & 3)

Note: Screwdriver is not included.

Power Recliner with Headrest Assembly Instructions

NOTICE: – To reduce the risk of product damage:

- Do not plug in until instructed.

1. Once the furniture is unpacked, carefully remove the yellow electrical components bag from the body bracket and set aside; depending on the product purchased, inside the bag are the power supply, power cord, optional remote and three AAA batteries for the optional remote (FIGURE 1).

WARNING – To reduce the risk of injury:

- Do not operate the unit until the back is installed and locked.
- The back of the unit must be lifted for assembly. Please seek assistance if you are unable to lift at least 45 pounds without strain.

2. Make back electrical connections.

- Lay the back across the arms of the chair. Turn the locking levers, located on the brackets attached to the back (one on each side), to a 90° angle (FIGURES 2 AND 3).
- Locate and identify the two electrical connections between the back and the body. The color of the connectors varies by date of manufacture.
 - The brown connectors on the right side (sitting) are for the adjustable headrest feature. One connector routes from bottom of the back panel and the other between the rear seat and tailgate.
- Carefully rotate the back until the headrest actuator cable is able to reach the connector.
- Connect the adjustable headrest (FIGURE 4). Align the pins and sockets in the brown connectors, push the connectors together and close the locking cover to secure the connection.

3. Install the back.

- Continue rotating the back at a slight angle, making sure the headrest and lumbar connections fall between the rear seat and tailgate, and align the brackets on the back with the brackets on the body (FIGURE 2)
- Lower the back onto the body, making sure the back and body brackets are completely engaged.
 - To make sure the back is properly installed with both sets of back and body brackets engaged, stand behind the chair and twist the back from side to side. If one or both sides move out of position the brackets are not engaged (FIGURE 5). Remove the back and repeat the steps above.
 - If you are unable to install the back properly, contact your La-Z-Boy® dealer for assistance.
- Lock the brackets by using a screwdriver to push down the locking levers (FIGURE 3).

4. Remove the power supply from its packaging from the electrical components bag. Remove the power supply and 120 volt power cord from the package.

5. Locate the motor connector behind the unit. Connect the motor connector to the power supply connector. Align the connectors, push together until fully seated and close the locking cover to secure the connection (FIGURE 6).

6. Connect the 120 volt power cord to the power supply (FIGURE 6). Do not plug in until instructed in the operating instructions.

7. Proceed to the *Battery Backup Assembly Instructions*.

8. To remove the back, unplug the 120 volt power cord from the electrical outlet and disconnect the power supply from the motor connector behind the unit. Reverse the *Assembly Instructions* steps. When lifting the back up from the body, to lay across the arms, **make sure** to do so slowly and carefully to prevent damage to the electrical connections.

Power Recliner with Headrest Assembly Instructions

Power Rocking Recliner Style Featured

FIGURE 1

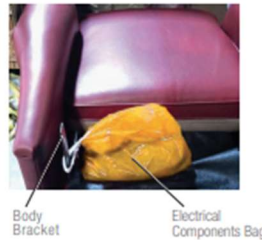


FIGURE 2

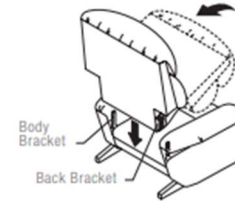


FIGURE 3

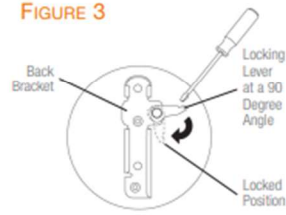


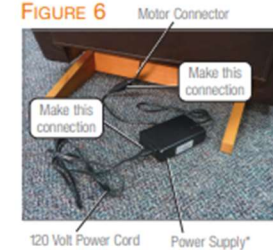
FIGURE 4



FIGURE 5



FIGURE 6



**Power supplies/connections may vary by date of manufacture.*

Wireless Remote Instructions

How to Pair a Wireless Remote

Please read through all instructions before beginning the steps.

Tools Required:

Paper Clip

NOTE: Remain in close proximity of the wireless remote cradle when completing the pairing process. Only one remote can be paired to a unit.

Pairing a Wireless Remote:

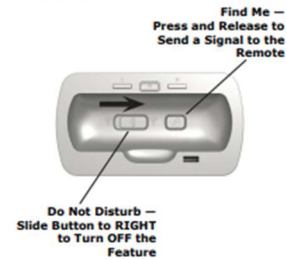
- Remove the (3) AAA batteries from both the original wireless remote and the new, or replacement remote if installed.
Both the original remote, when in proximity of the unit, and the new, or replacement, remote must be free of batteries during the pairing process.
- Remove the (2) 9-volt batteries from the power supply if installed.
- Unplug, or disconnect, the unit from the power source (wall outlet or optional lithium-ion battery pack).
- Disconnect the motor connector from the power supply if using the power supply for the power source.
- Wait 10 seconds to reset the unit's program. Then reconnect the motor connector to the power supply or battery pack.
- If using the power supply, plug the power cord into the outlet.
- Press the Find Me button on the cradle and release. *The Find Me button features the magnifying glass icon; refer to the image in the right column below Step 13.*
- Remove the battery compartment cover from the backside of the remote. Install three (3) AAA alkaline batteries following the polarity markings in the battery compartment.

- Bend one end of a paper clip to lengthen and straighten the "leg."
- Locate the hole in the backside of the wireless remote, near the bottom. Insert the paper clip "leg" into the hole until you hear a click, and remove the clip.



Insert a Paper Clip Until You Hear a "Click" Sound

- A series of three beeps is transmitted from the remote after approximately five seconds. This indicates a successful pairing of the remote.
- Replace the battery compartment.
- Make sure the Do Not Disturb button is turned off to allow communication between the remote and furniture.



Pour l'assistance en français, appelez votre représentante de service à la clientèle.