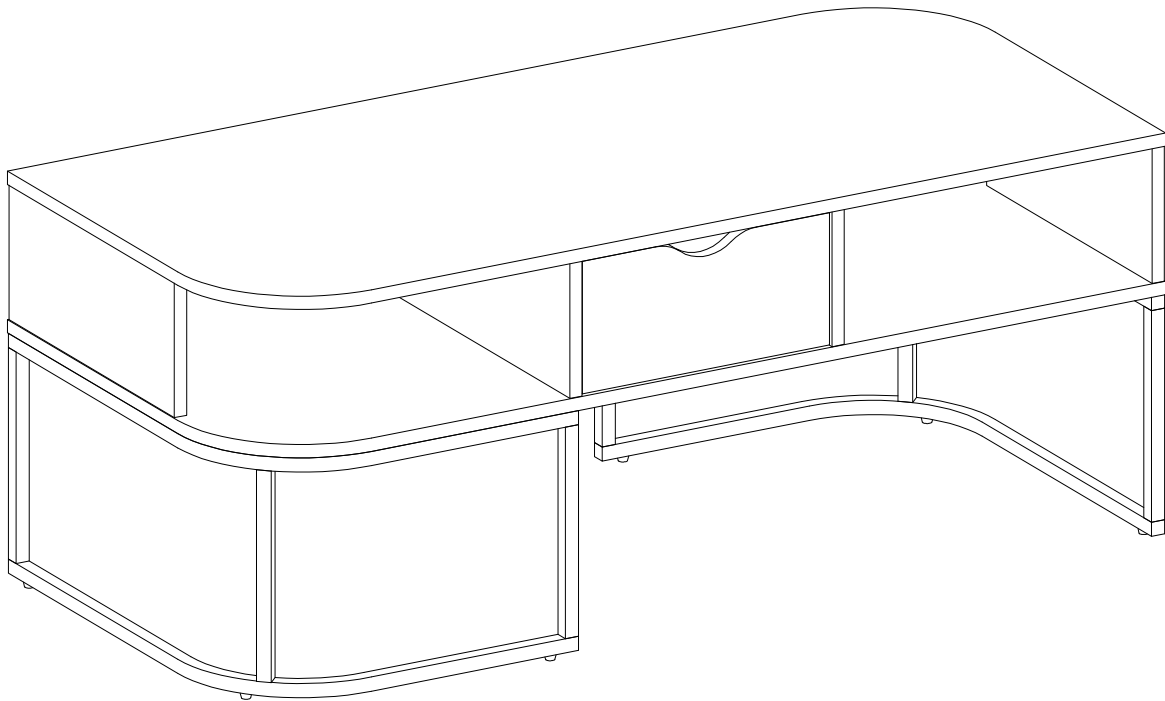


Item # :AF44JNCVCT Assembly Instructions



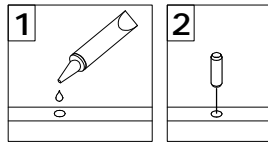
Walker Edison®

Please visit our website for the most current instructions, assembly tips, report damage, or request parts. www.walkeredison.com

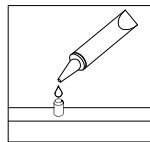
Revised 03/12/2019 (I)

General Assembly Guidelines

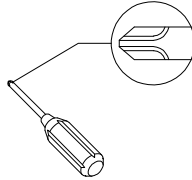
- I. Ensure that all parts and hardware are available before beginning assembly.
- II. Follow each step carefully to ensure the proper assembly of this product.
- III. Two people are recommended for ease in the assembly of this product.
- IV. The three main types of hardware used to assemble this product are : wood dowels , screws and bolts.
- V. The provided glue is to secure wood dowels in place . When first inserting dowels , locate the appropriate hole for the dowel , place a small amount of glue in the hole and insert the dowel . Wipe away excess glue immediately.



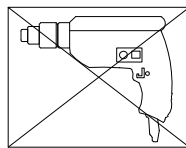
In future assembly steps when dowels are necessary to attach assembly parts together , place a small amount of glue on the end of the dowel before attaching parts together . Wipe away excess glue immediately.



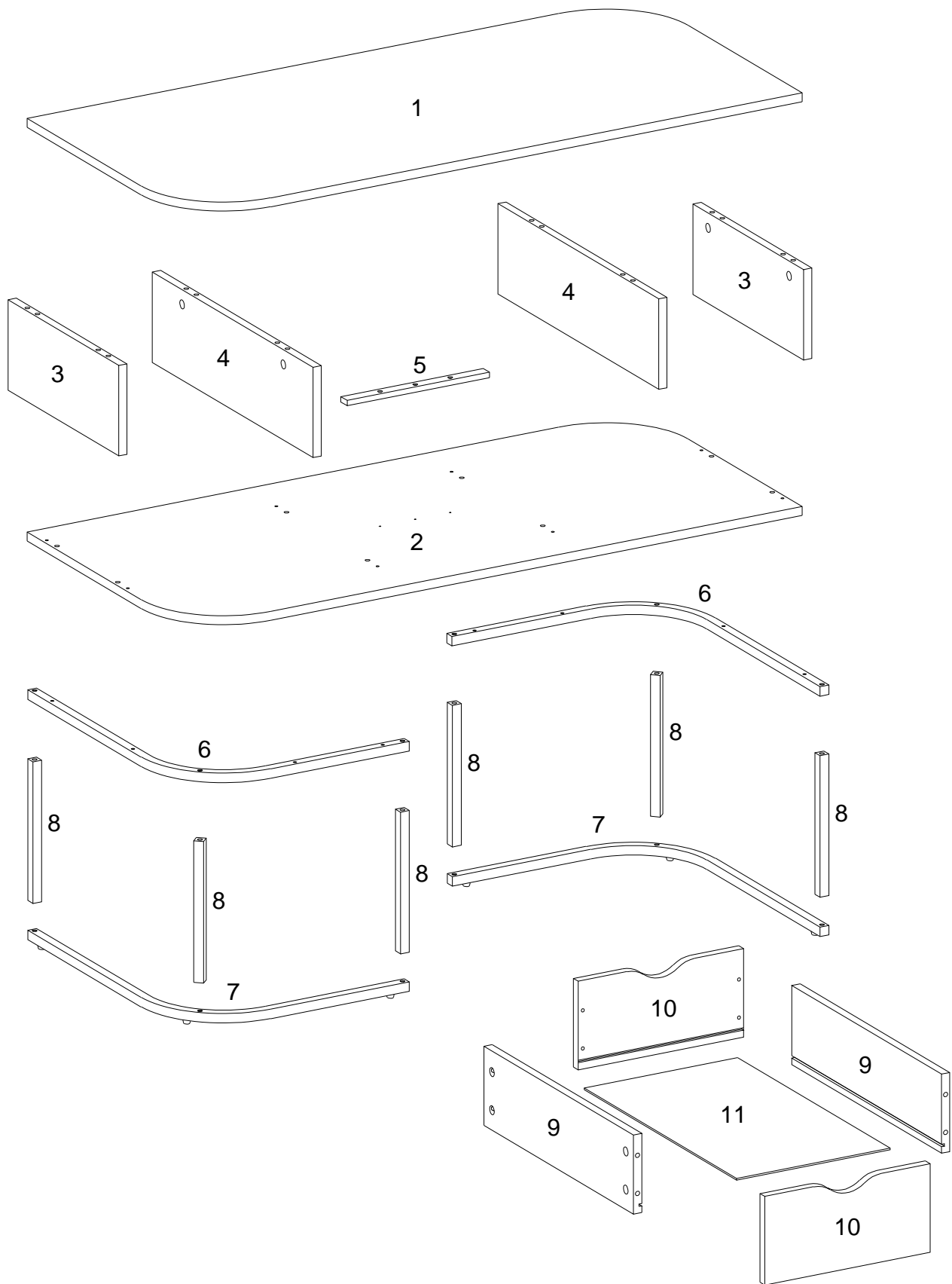
- VI. A Phillips head screwdriver is required for the assembly of this product .




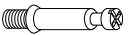





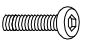


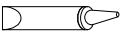
- VII. Power tools should not be used to assemble this product .

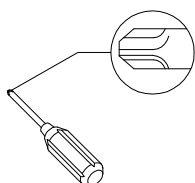


Parts List



Hardware List

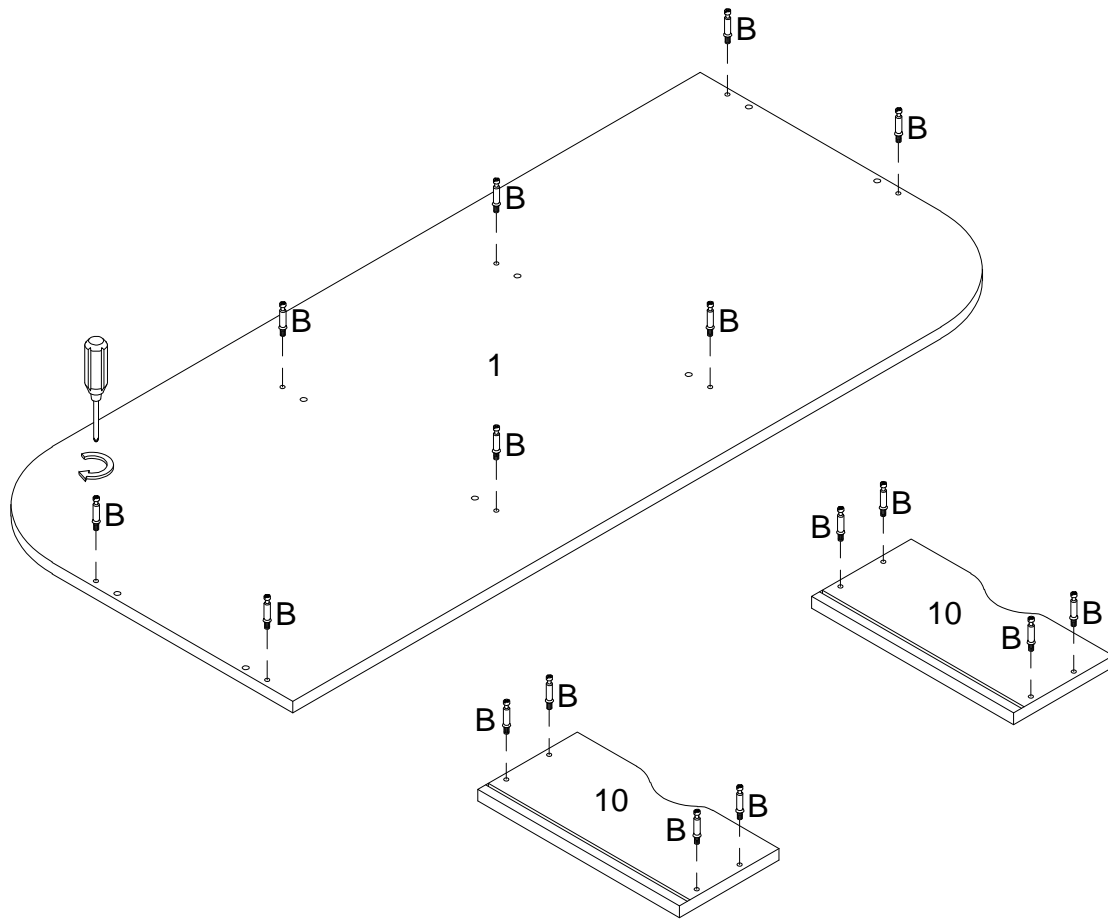
A		Ø8x30mm	Wooden dowel	16 pcs
B		Ø6x35mm	Cam bolt	16 pcs
C		Ø15x11mm	Cam lock	16 pcs
D		Ø30mm	Sticker	16 pcs
E		Ø6x50mm	Bolt	8 pcs
F		M 4	Hex Key	1 pc
G		Ø1/4"x25mm	Bolt	12 pcs
H		Ø1/4"x25mm	Bolt	8 pcs
J		Ø4x18mm	Screw	3 pcs
K			Adjustable floor leveler	6 pcs
L			Glue tube	1 pc



Philips head screwdriver required for assembly
(not included)

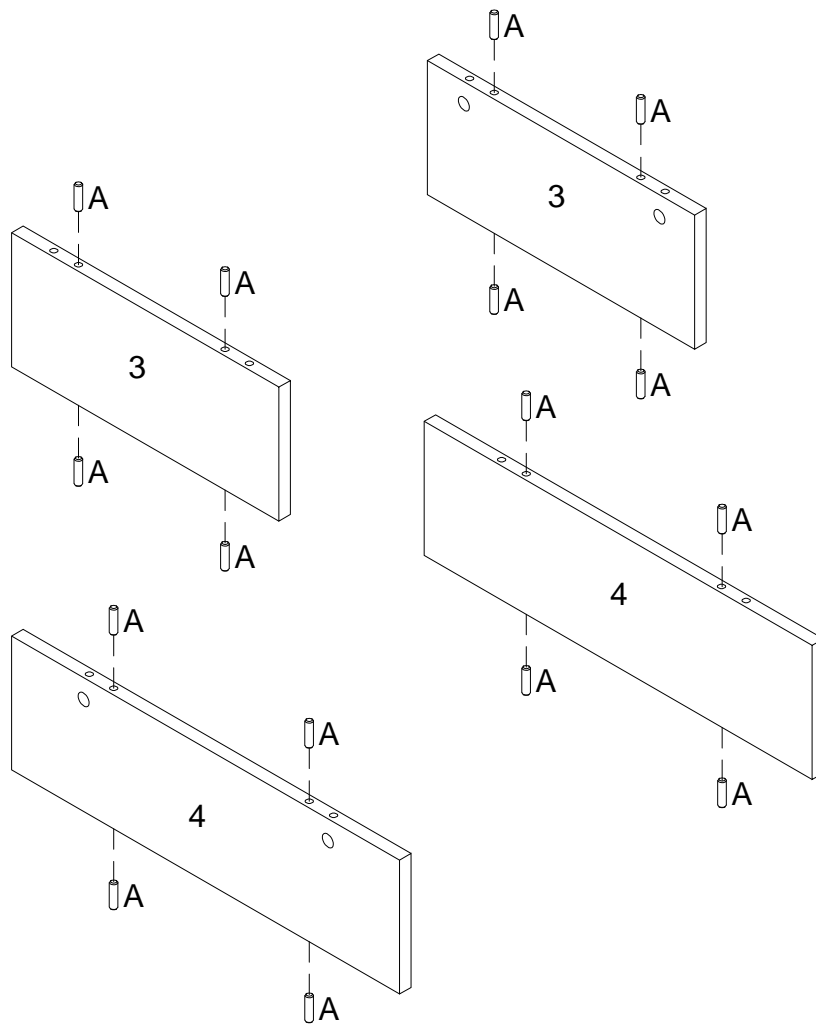
*The hardware quantities listed above are required for proper assembly.
Some extra hardware may also have been included.*

Step 1



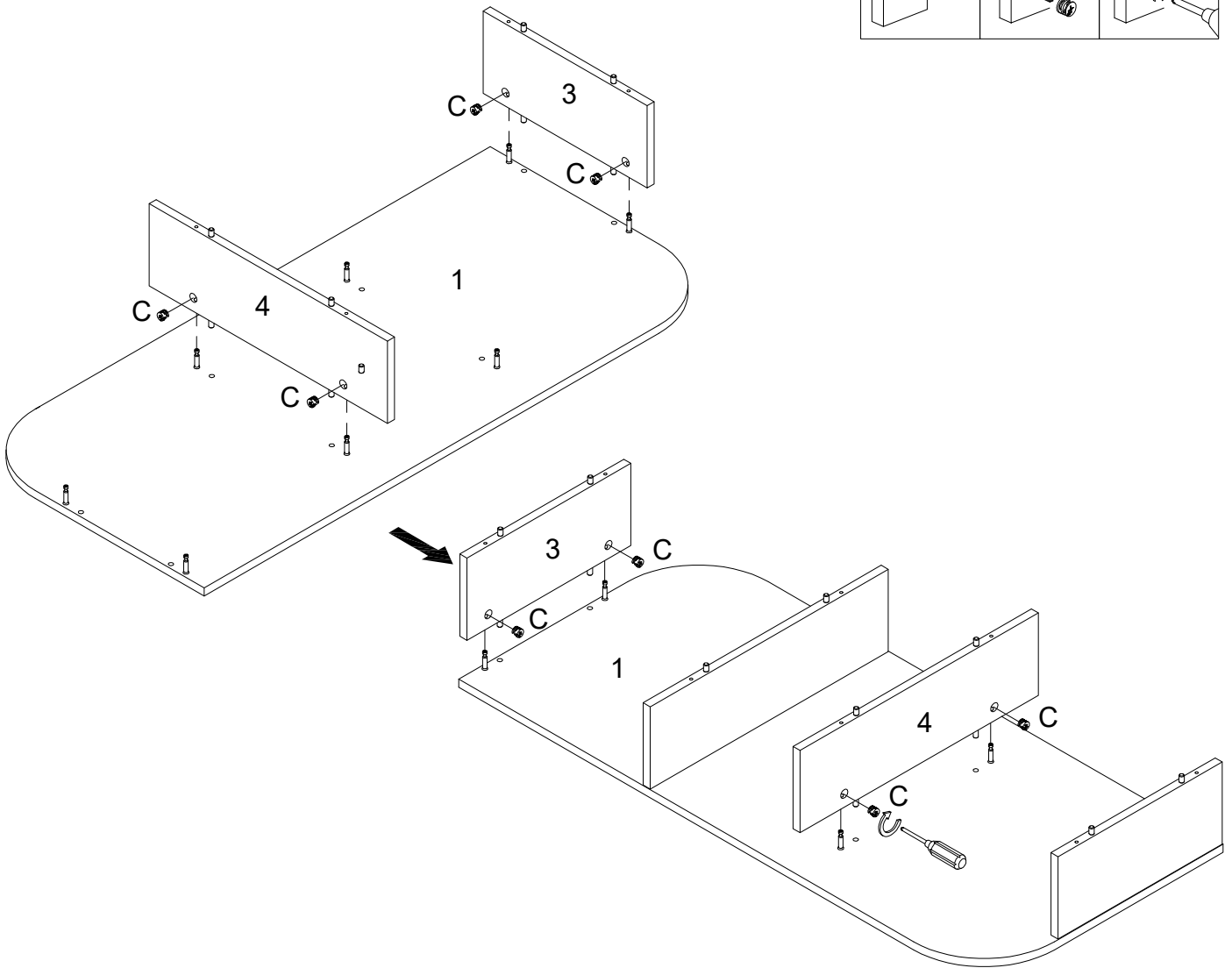
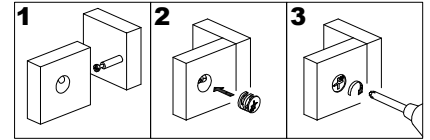
Secure cam bolt (B) into parts (1,10) with Philips head screwdriver as per diagram.

Step 2



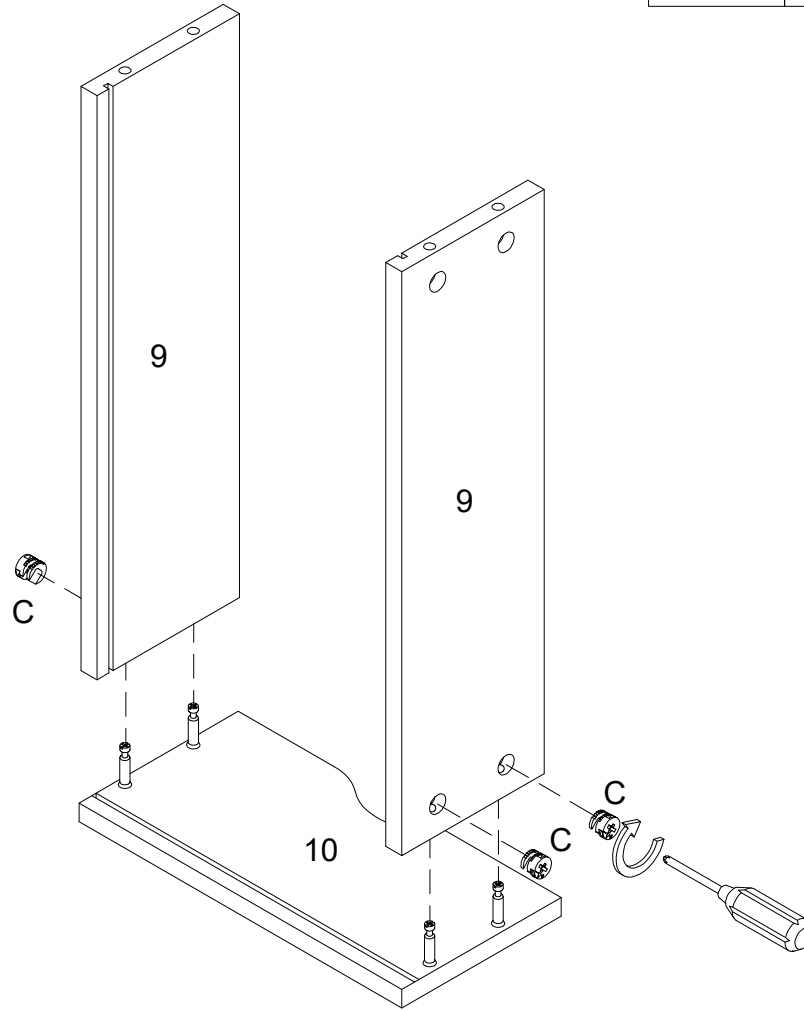
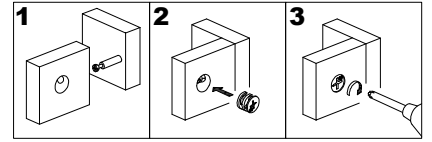
Insert wooden dowel (A) into parts (3,4) as per diagram.

Step 3



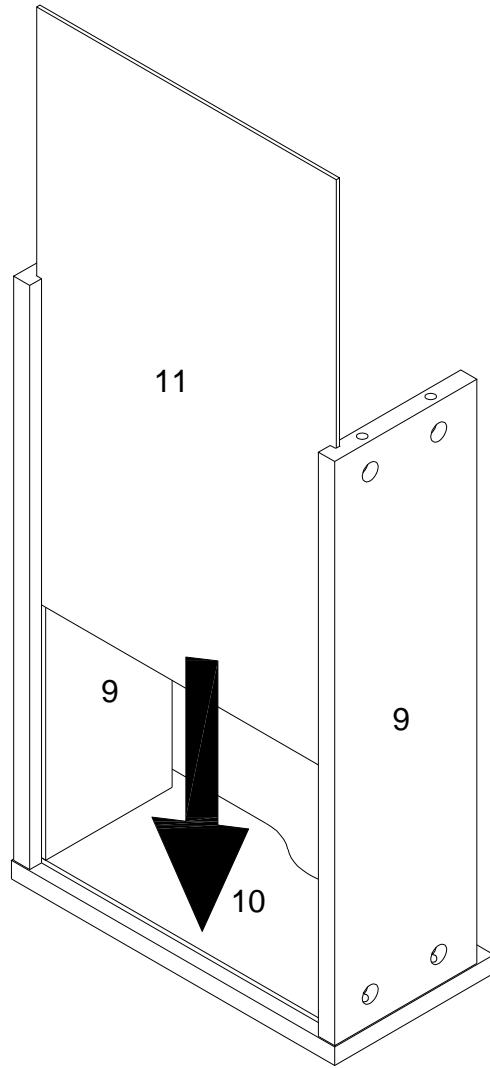
Using cam lock(C) attach parts (3,4) to part (1) with Philips head screwdriver as per diagram.

Step 4



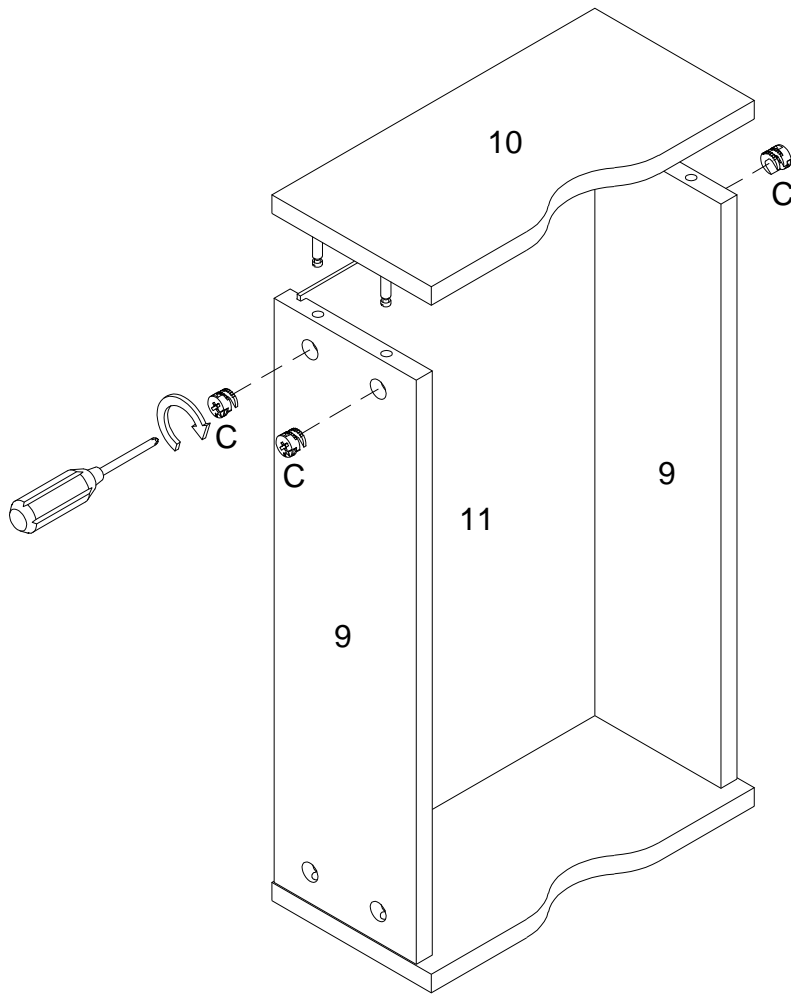
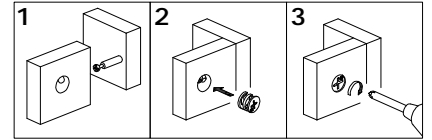
Using cam lock(C) attach part (9) to part (10) with Philips head screwdriver as per diagram.

Step 5



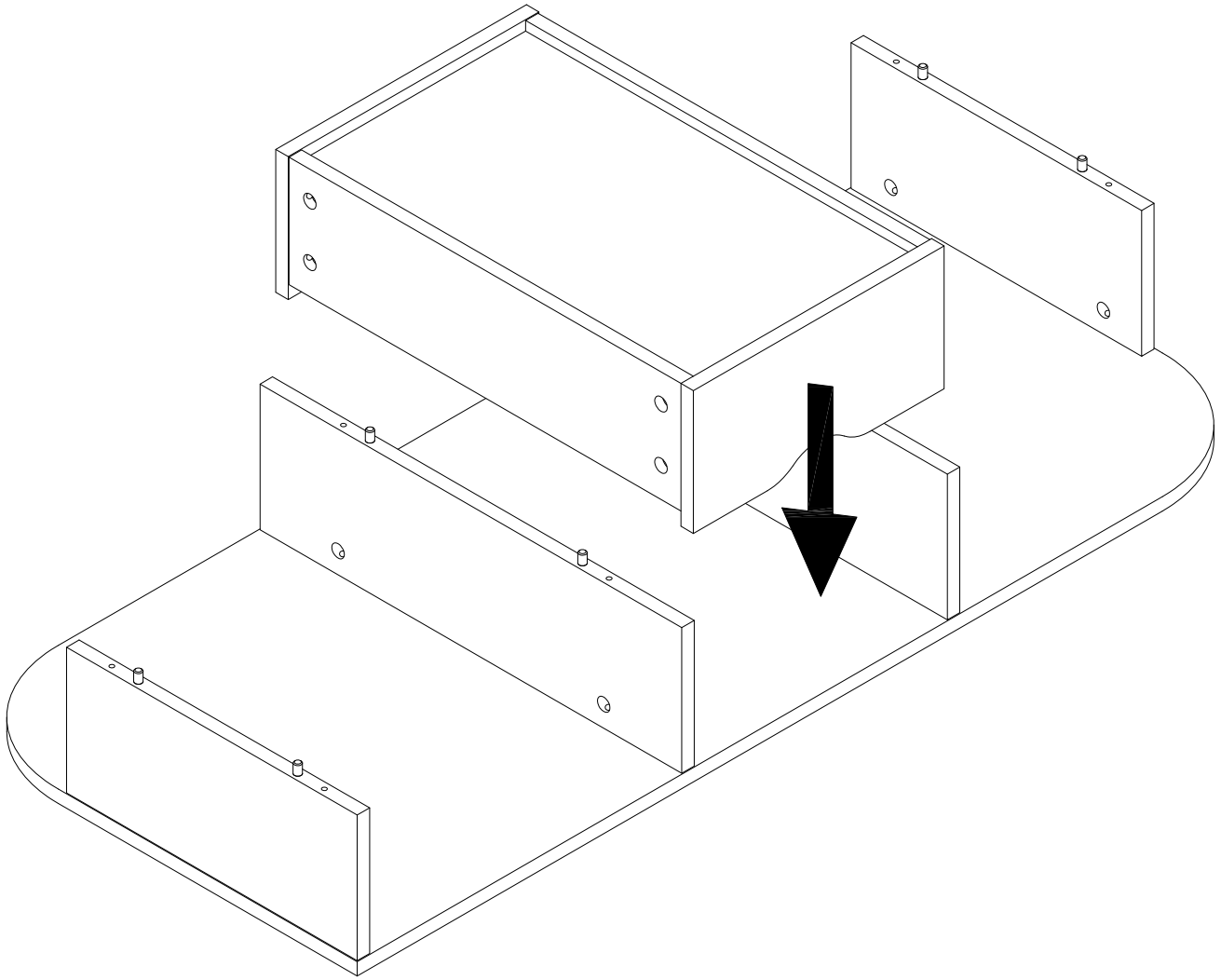
Put part (11) as per diagram.

Step 6



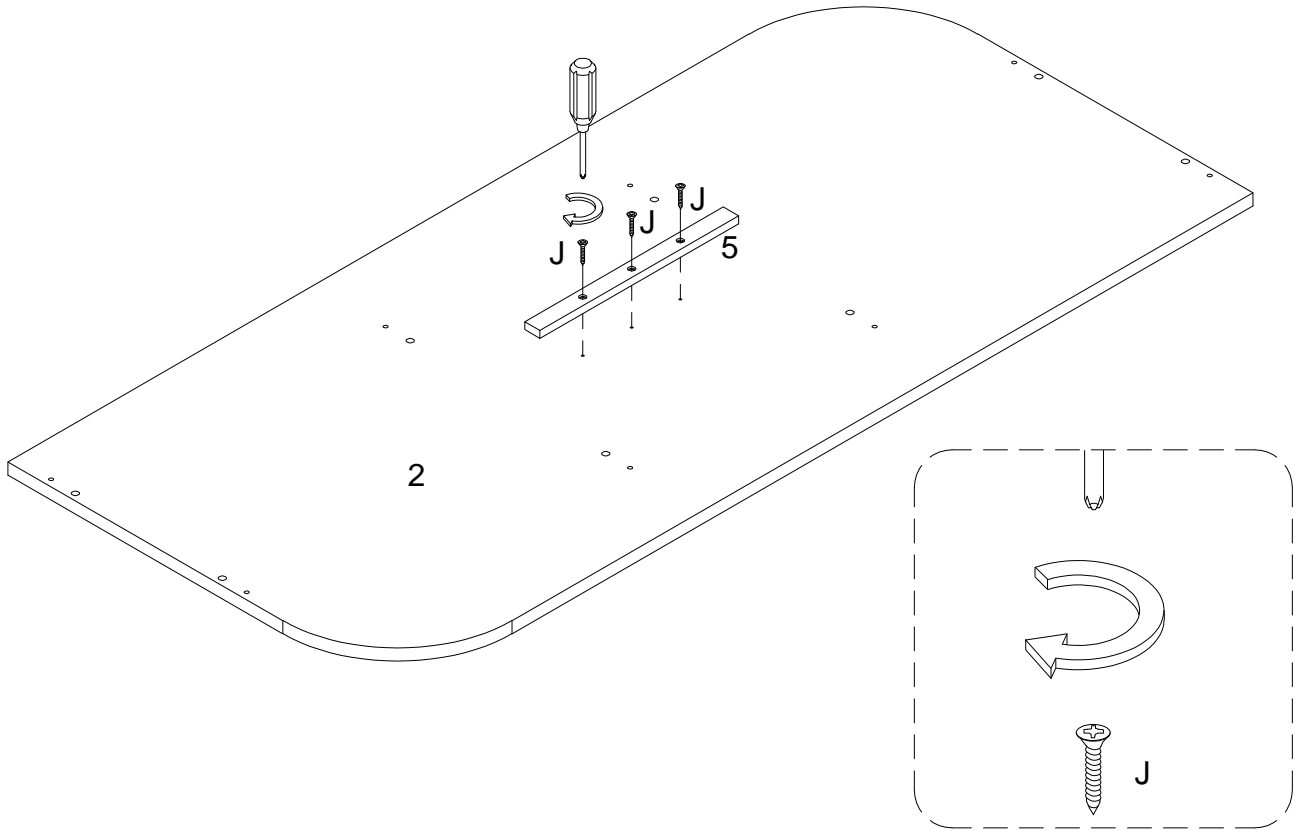
Using cam lock(C) attach part (10) to part (9) with Philips head screwdriver as per diagram.

Step 7



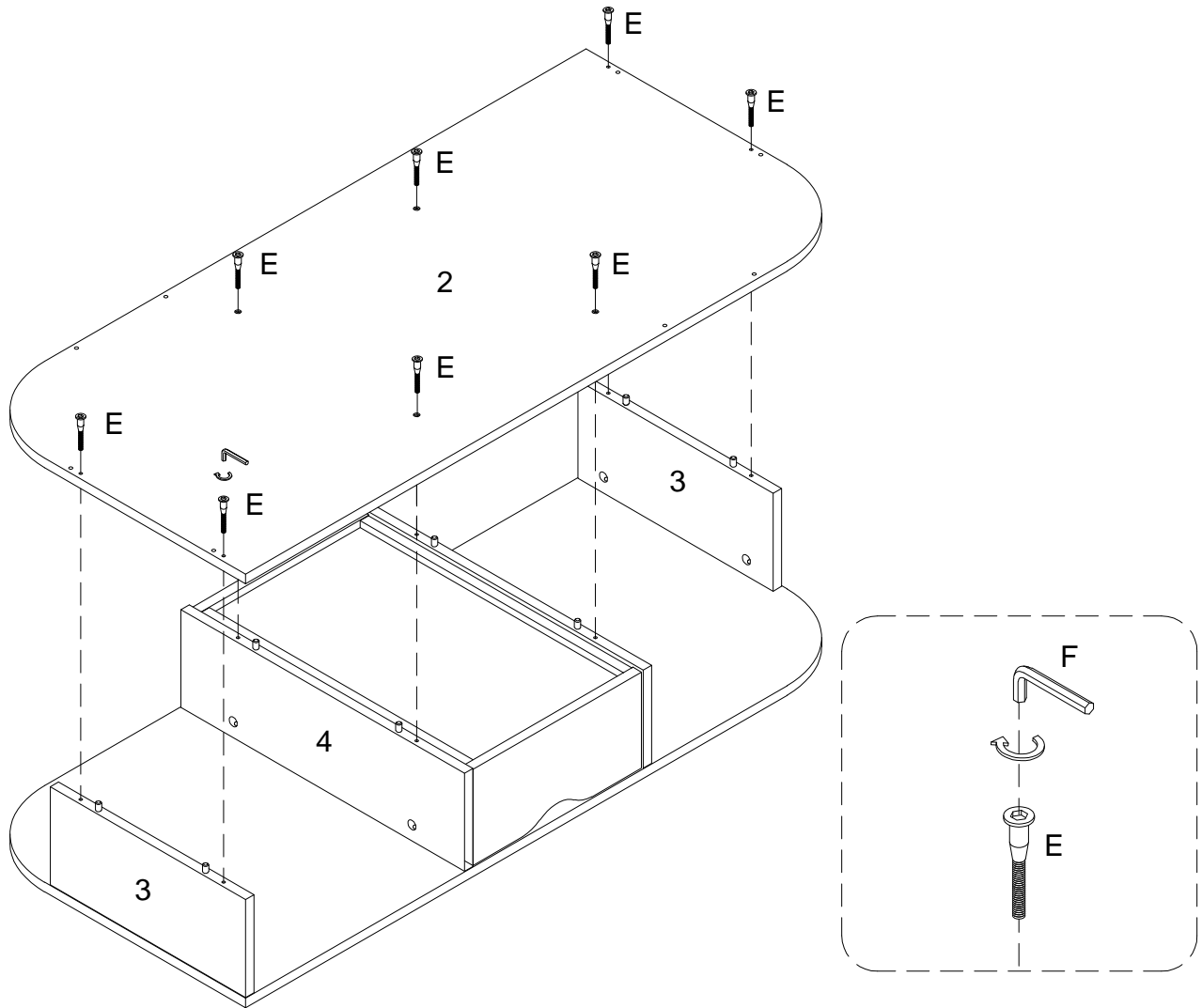
Put drawer into unit as per diagram.

Step 8



Using screw (J) attach part (5) to part (2) with Philips head screwdriver as per diagram.

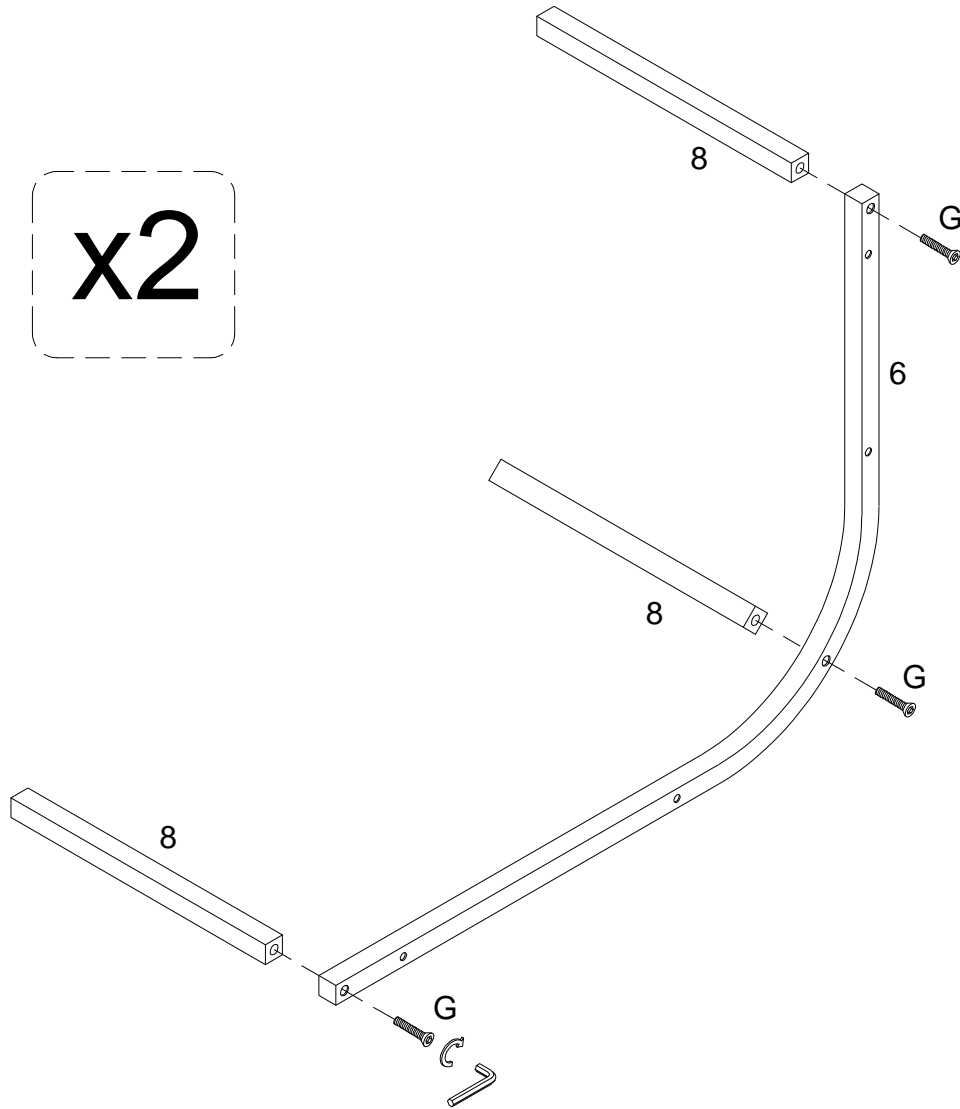
Step 9



Using bolt (E) attach part (2) into parts (3,4) with hex key (F) as per diagram.

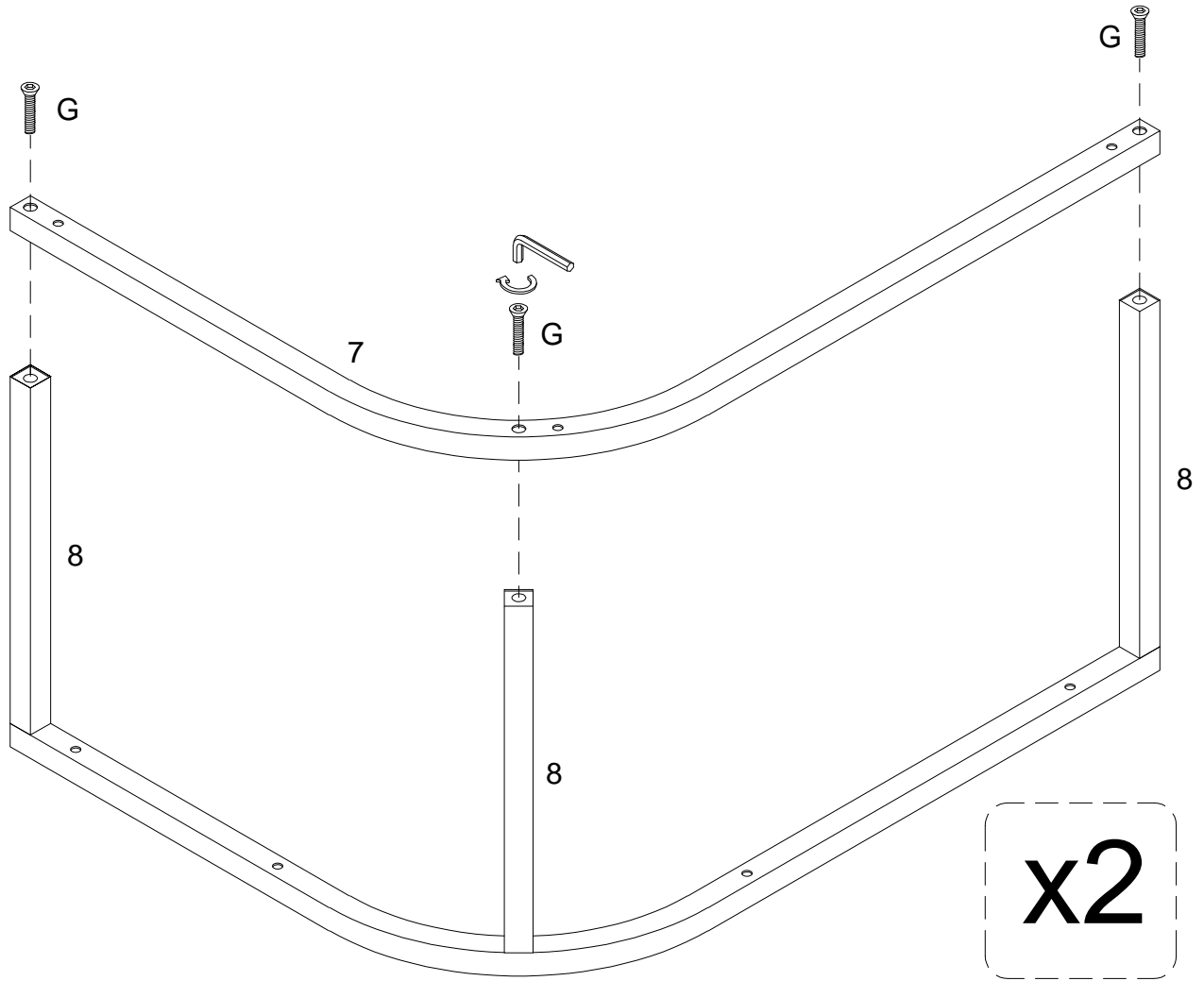
Step 10

x2



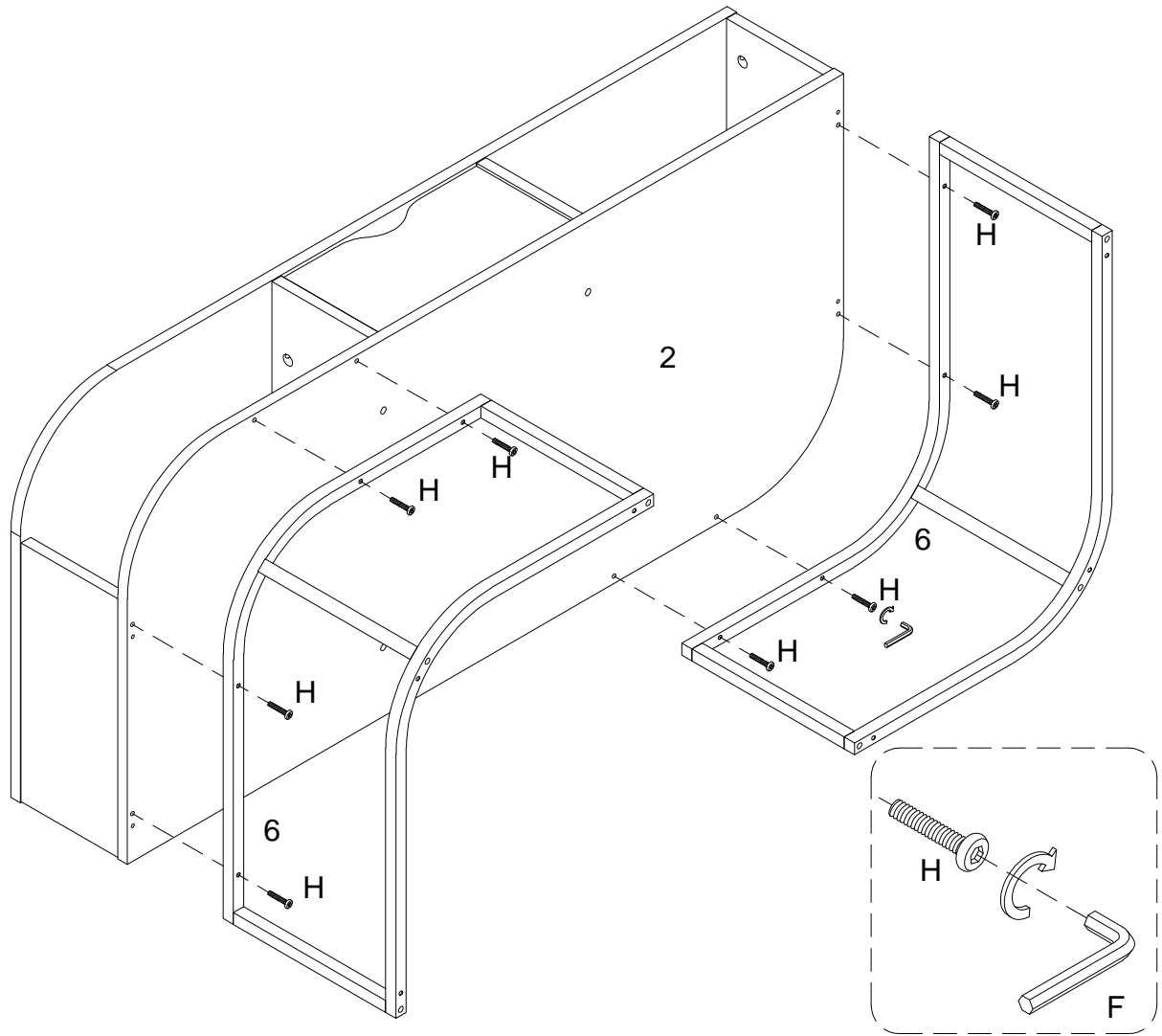
Using bolt (G) attach part (6) into part (8) with hex key (F) as per diagram.

Step 11



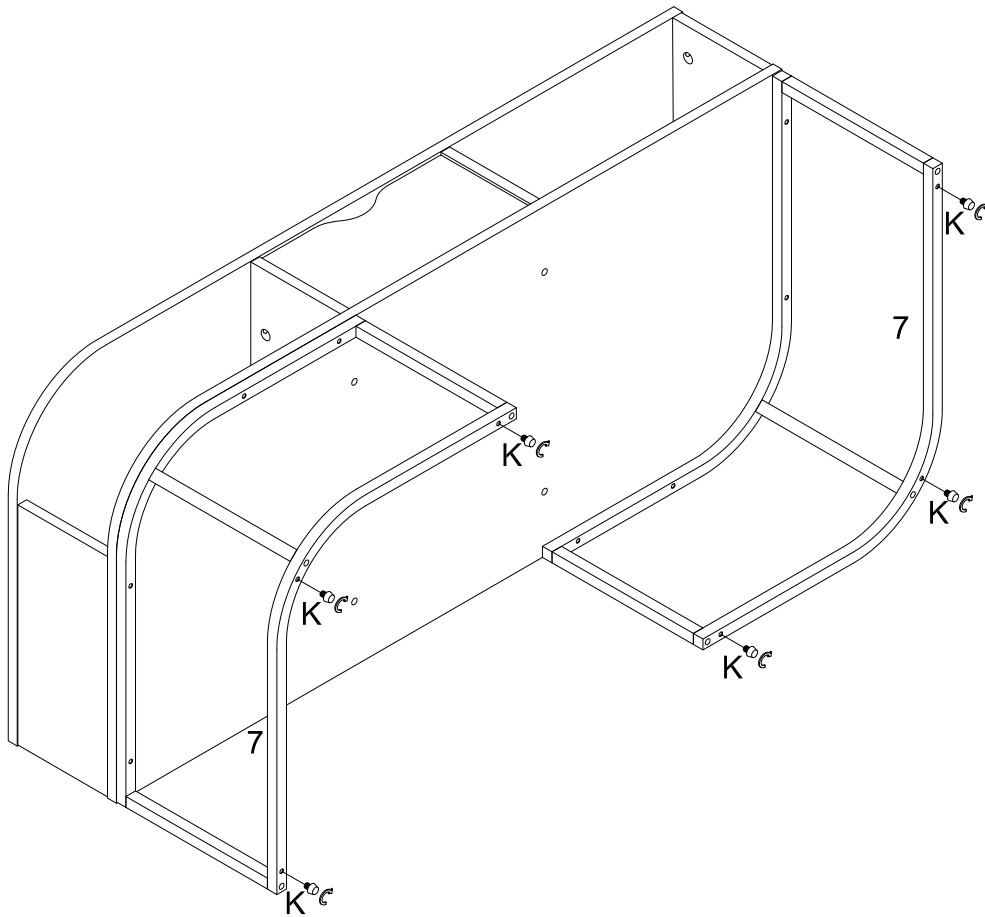
Using bolt (G) attach part (7) into part (8) with hex key (F) as per diagram.

Step 12



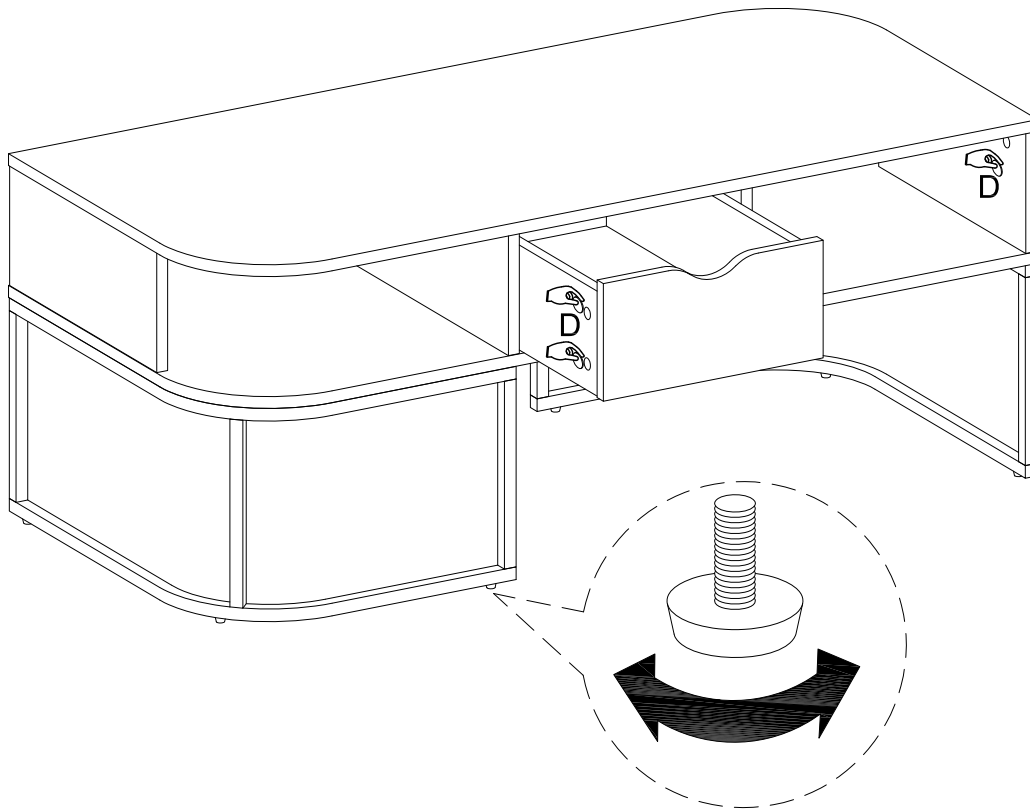
Using bolt (H) attach part (6) into part (2) with hex key (F) as per diagram.

Step 13



Position the assembled unit at the desired location .

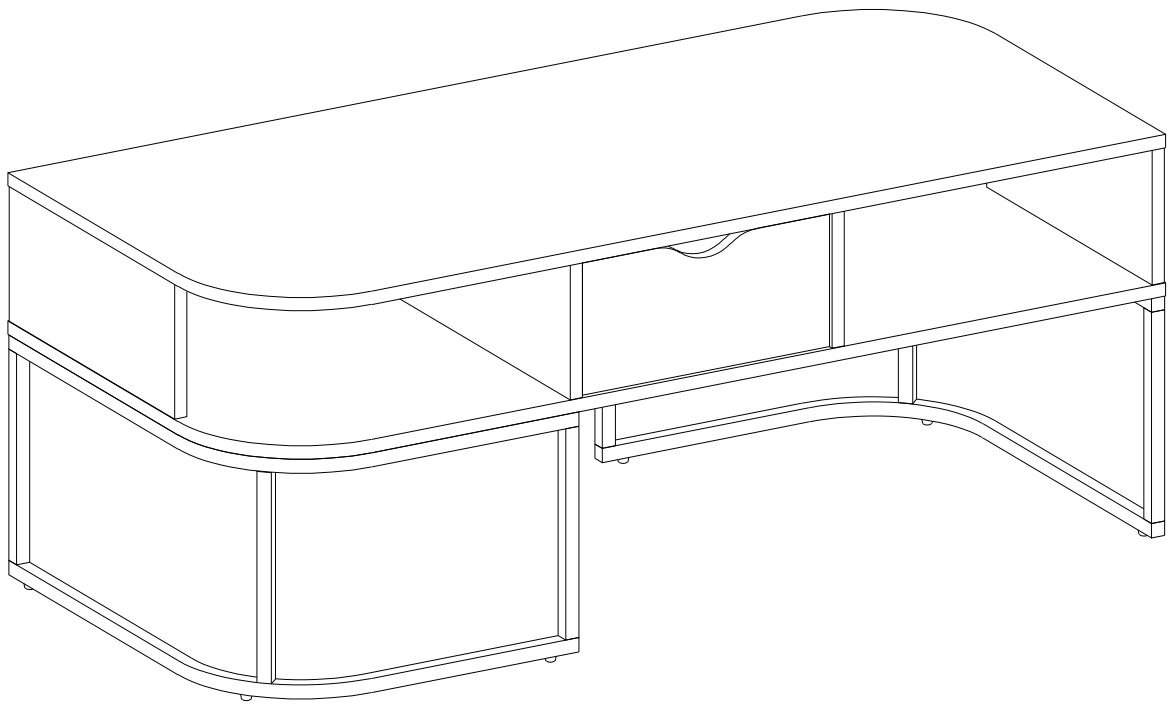
Step 14



Place sticker (D) cover the holes as per diagram .

If necessary adjust the floor leveler at the bottom of the support leg to level .

Step 15



Final Assembly