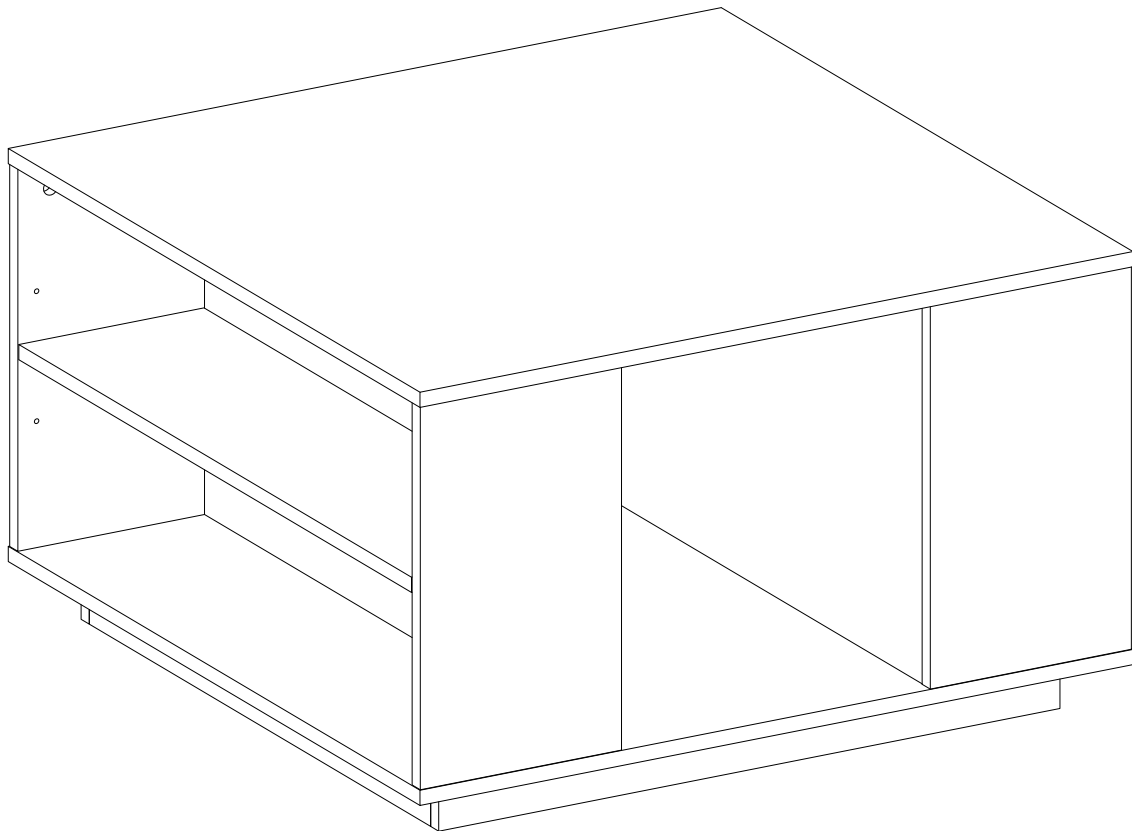


Item # : AF30DELSQCT Assembly Instructions



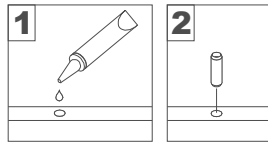
Walker Edison®

Please visit our website for the most current instructions, assembly tips, report damage, or request parts. www.walkeredison.com

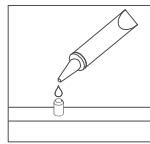
Revised 08/05/2020(C)

General Assembly Guidelines

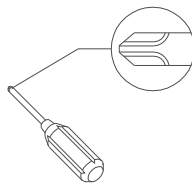
- I. Ensure that all parts and hardware are available before beginning assembly.
- II. Follow each step carefully to ensure the proper assembly of this product.
- III. Two people are recommended for ease in the assembly of this product.
- IV. The three main types of hardware used to assemble this product are: wood dowels, screws and bolts.
- V. The provided glue is to secure wood dowels in place. When first inserting dowels, locate the appropriate hole for the dowel, place a small amount of glue in the hole and insert the dowel. Wipe away excess glue immediately.



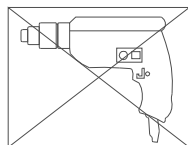
In future assembly steps when dowels are necessary to attach assembly parts together, place a small amount of glue on the end of the dowel before attaching parts together. Wipe away excess glue immediately.



- VI. A Phillips head screwdriver is required for the assembly of this product .

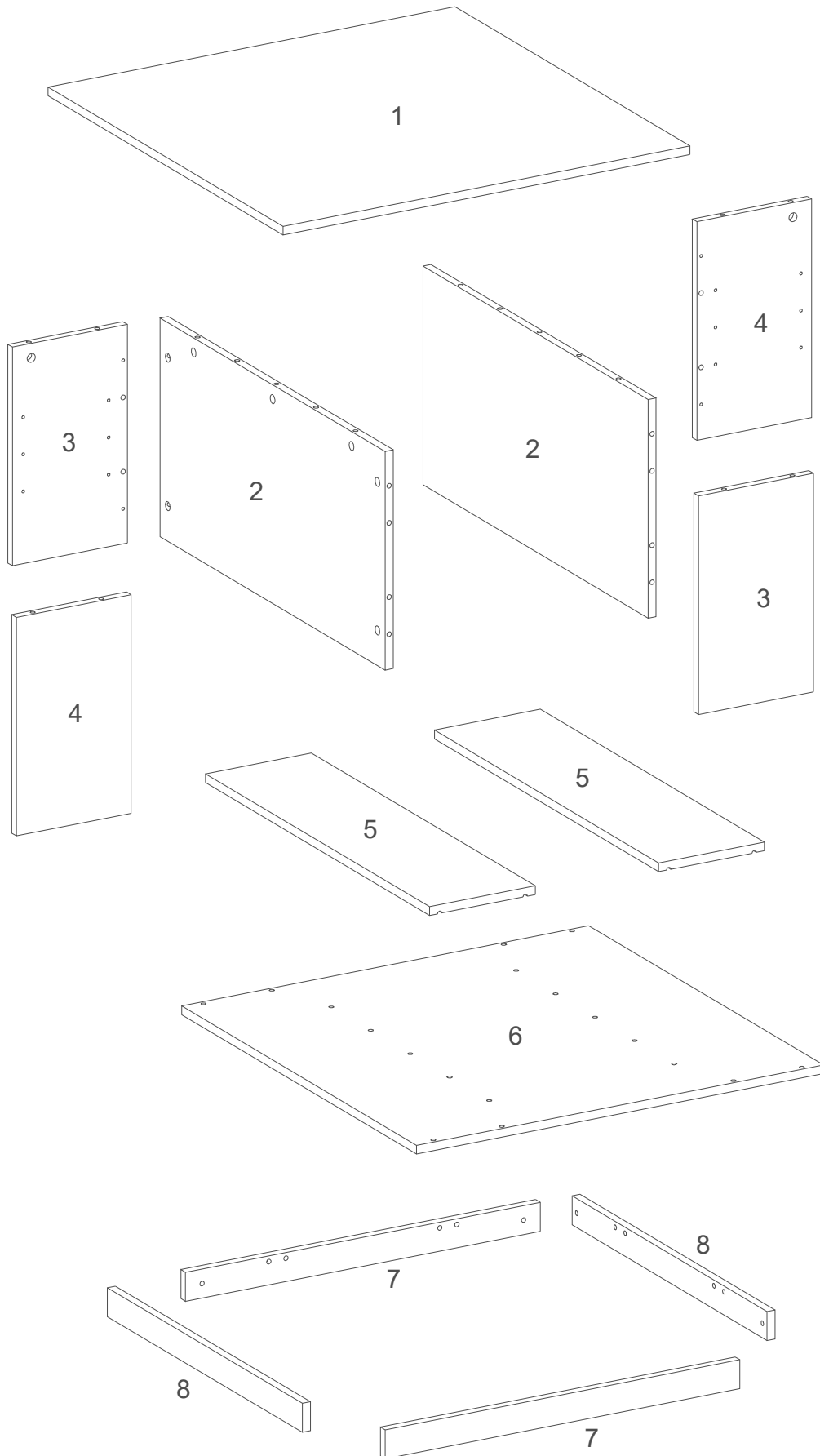


- VII. Power tools should not be used to assemble this product.




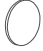
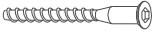



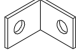




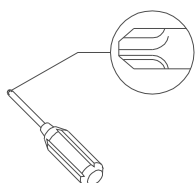
- VIII. Drill may be needed for securing product to wall.

Parts List



Hardware List

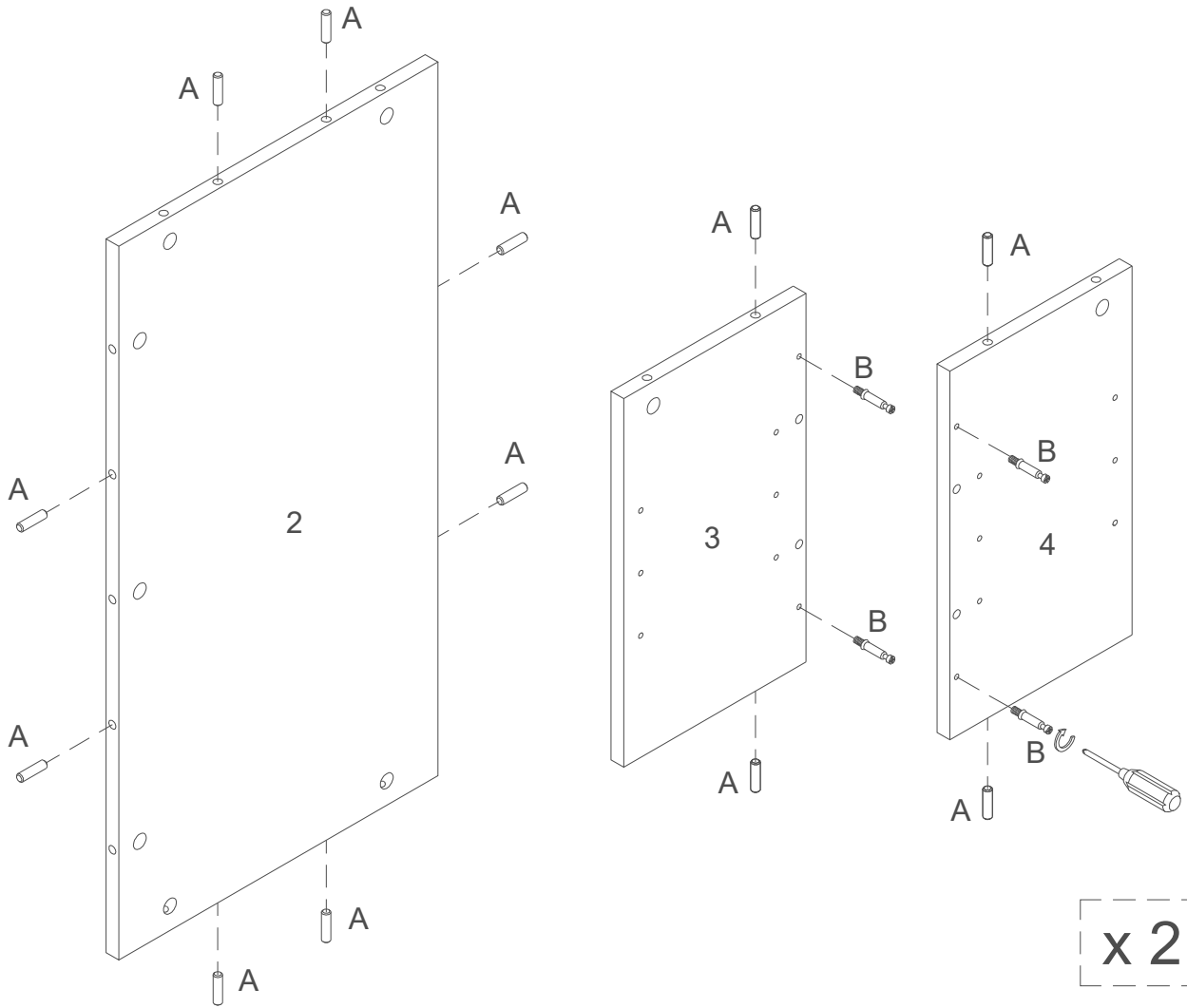
A		Ø8x30mm	Wooden dowel	24	pcs
B		Ø6x35mm	Cam bolt	18	pcs
C		Ø15x11mm	Cam lock	18	pcs
D		Ø30mm	Sticker	18	pcs
E		Ø6x50mm	Screw	10	pcs
F		Ø6x13mm	Bolt	24	pcs
G		M 4	Hex key	1	pc
H			Plastic wedge	8	pcs
J			Connecting iron sheet	4	pcs
K			Shelf support pin	8	pcs
L			Glue tube	1	pc



Philips head screwdriver required for assembly
(not included)

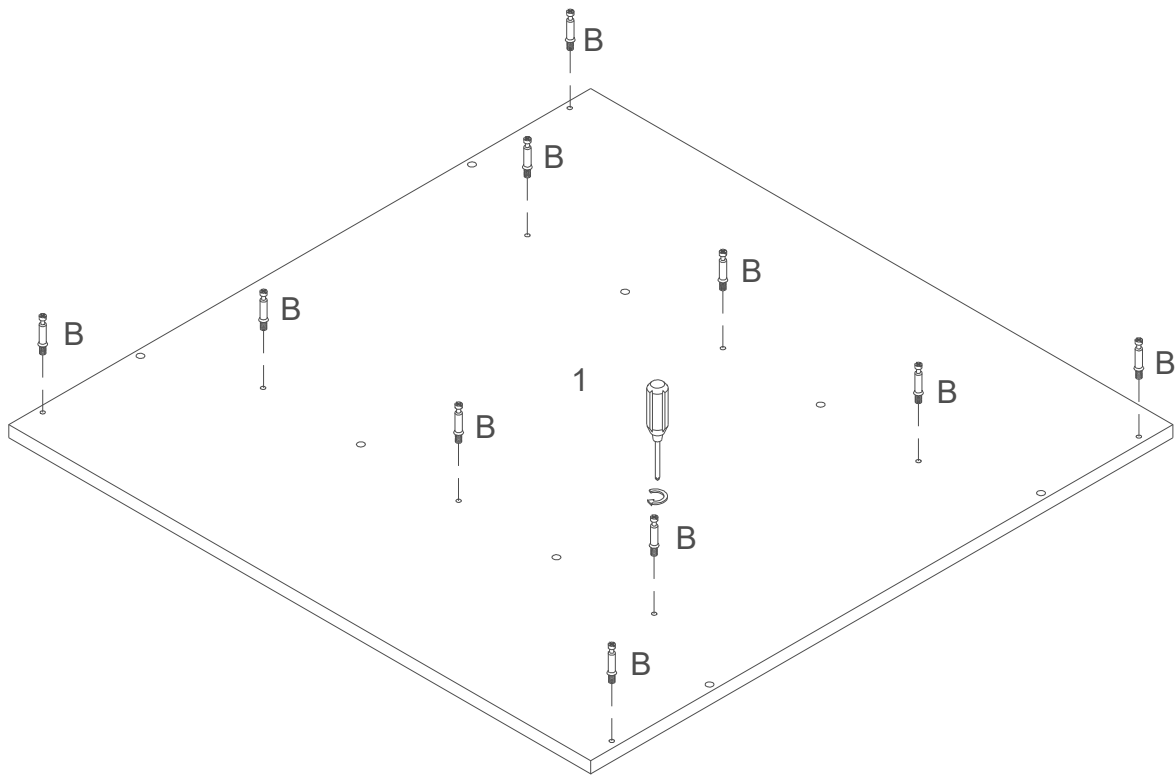
*The hardware quantities listed above are required for proper assembly.
Some extra hardware may also have been included.*

Step 1



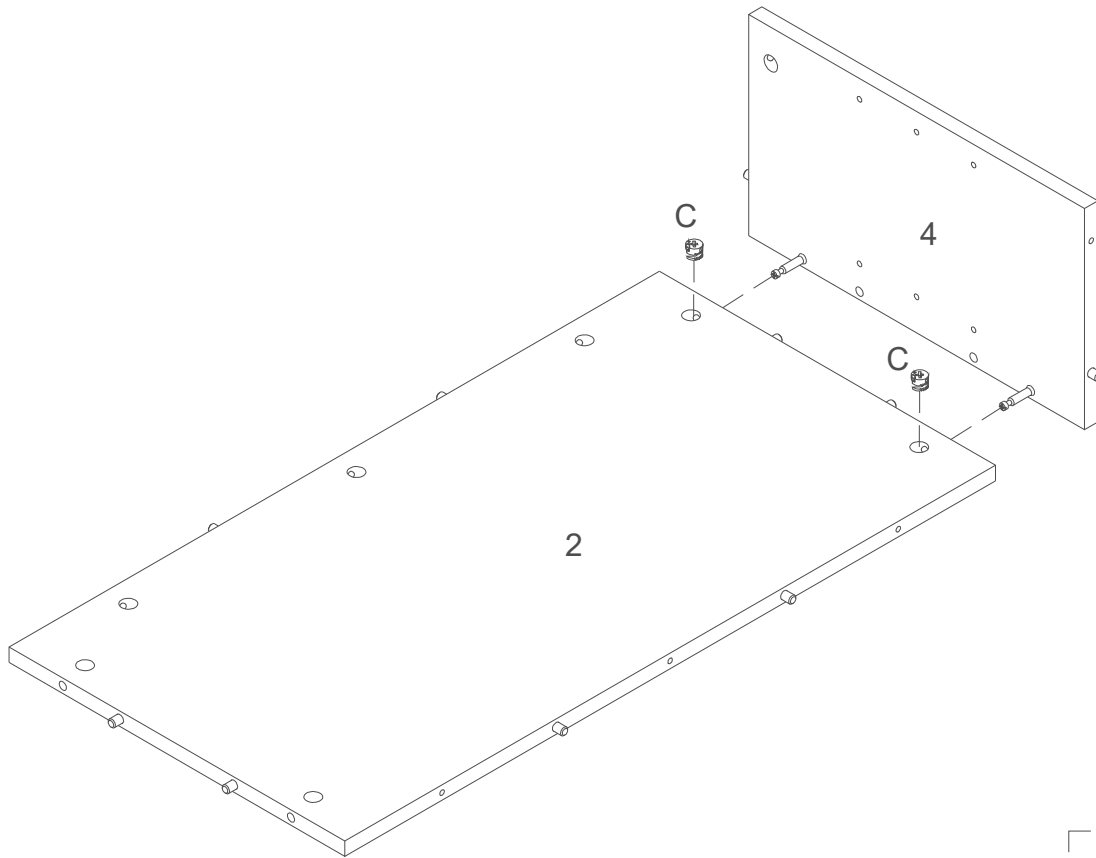
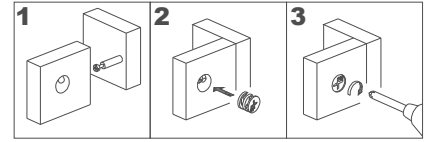
Insert wooden dowel (A) into parts (2,3,4), then secure cam bolts (B) into parts (3,4) with Philips head screwdriver as per diagram.

Step 2



Secure cam bolt (B) into part (1) with Philips head screwdriver as per diagram.

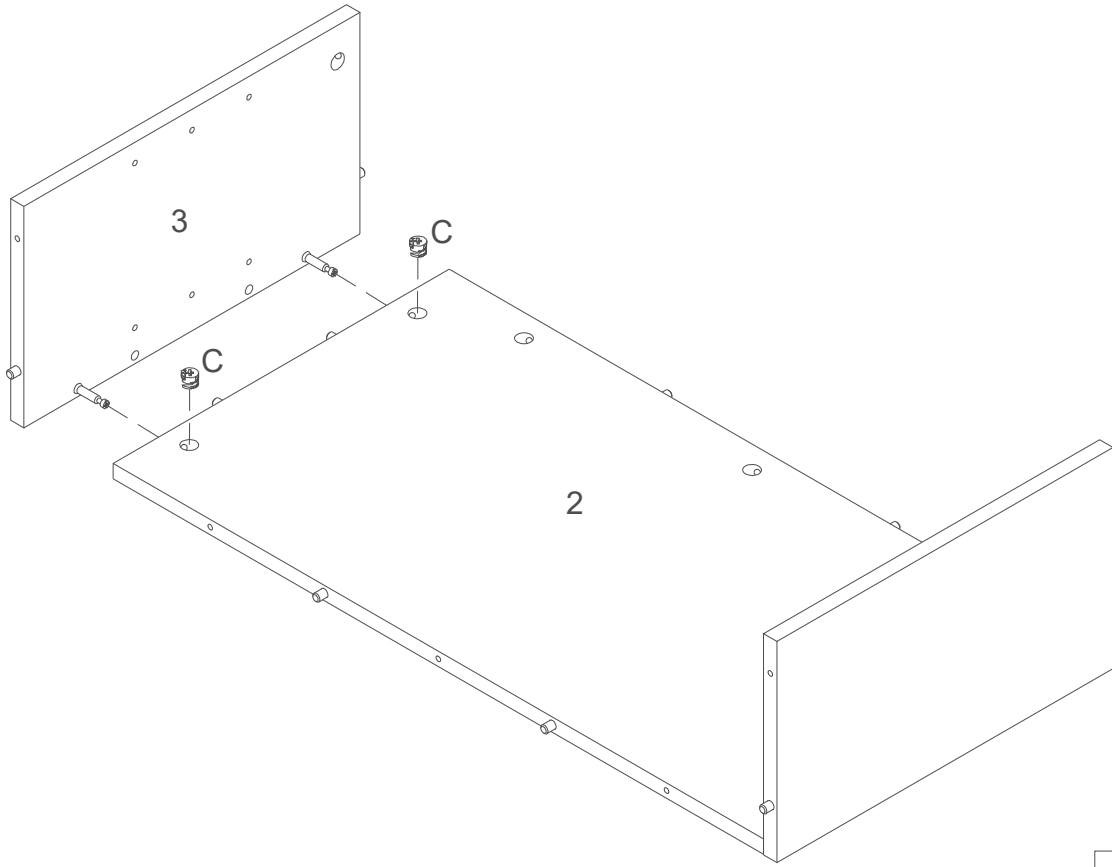
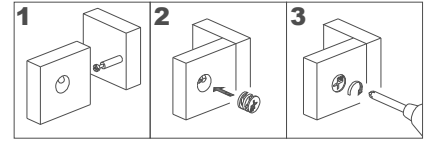
Step 3



x 2

Using cam lock (C) secure part (4) into part (2) with Philips head screwdriver as per diagram.

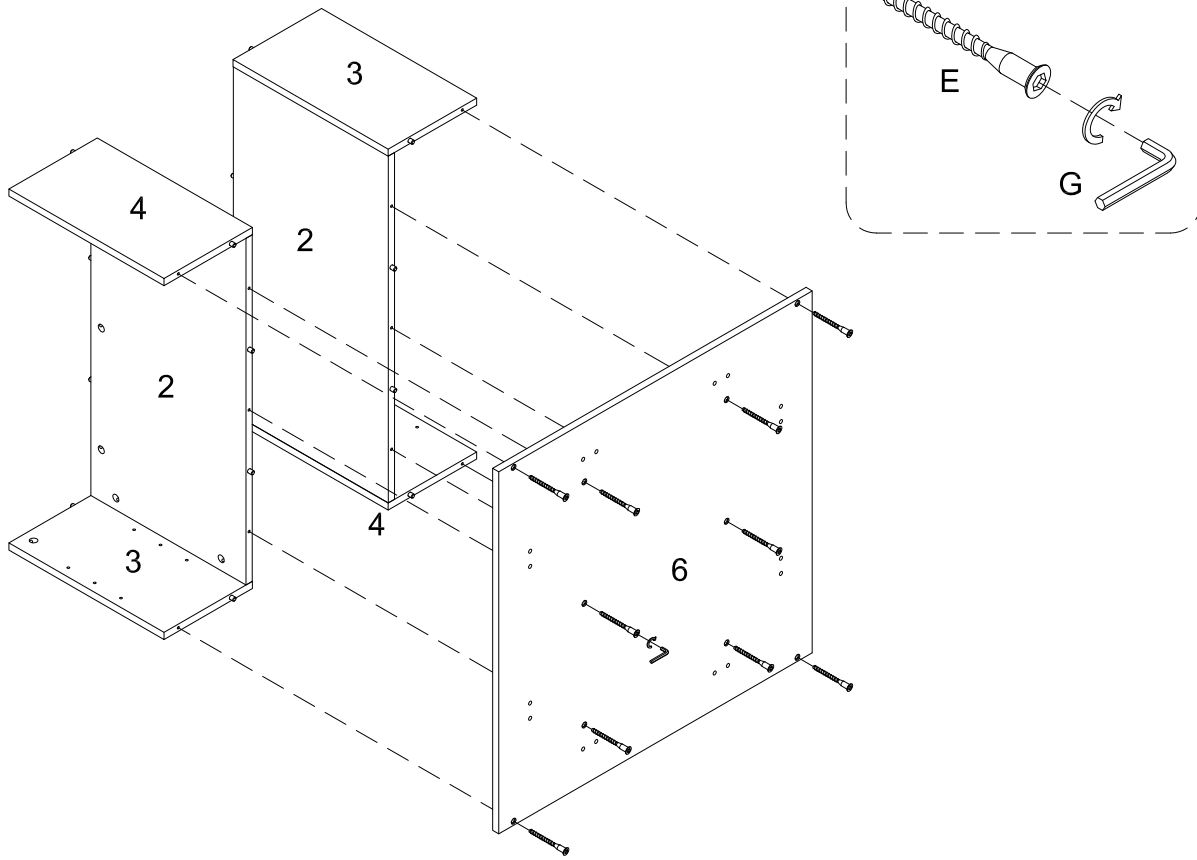
Step 4



x 2

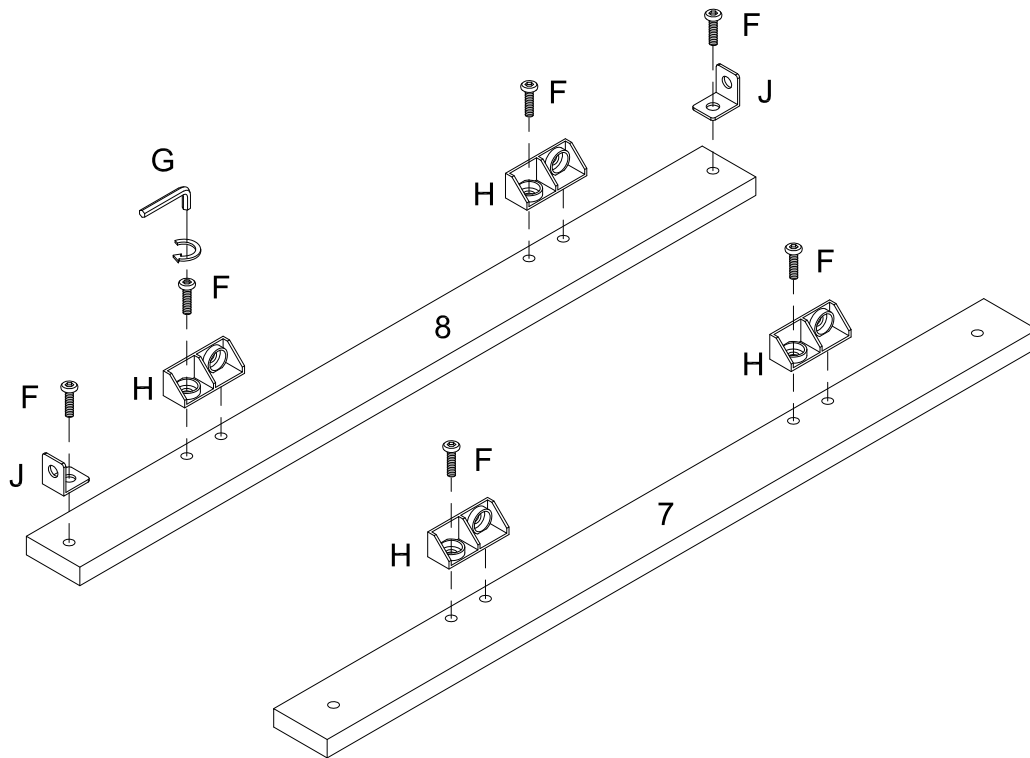
Repeat the last step as per diagram.

Step 5



Using screw (E) attach part (6) to parts (2,3,4) with hex key (G) as per diagram.

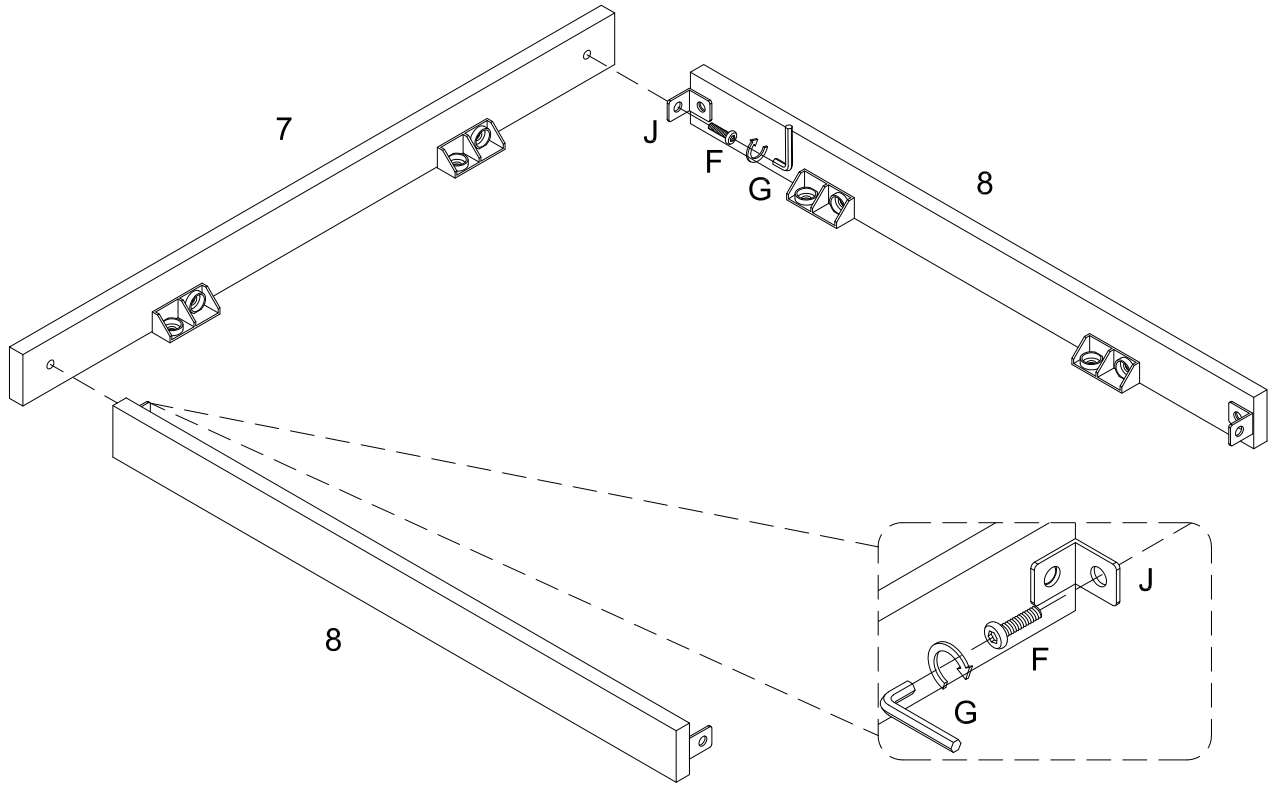
Step 6



x 2

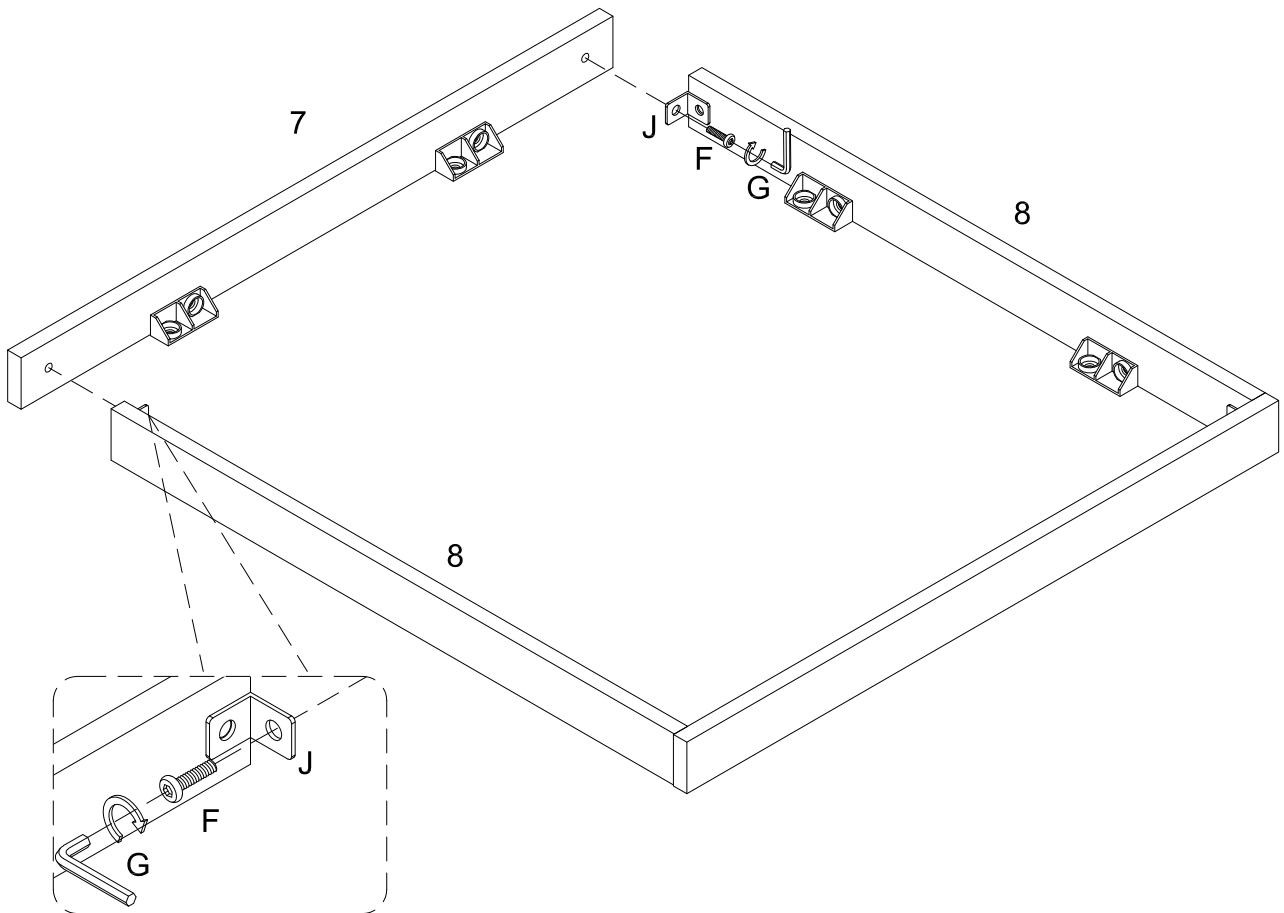
Using Bolt (F) attach plastic wedge (H) to parts (7,8), connecting iron sheet (J) to part (8) with Hex key (G) as per diagram.

Step 7



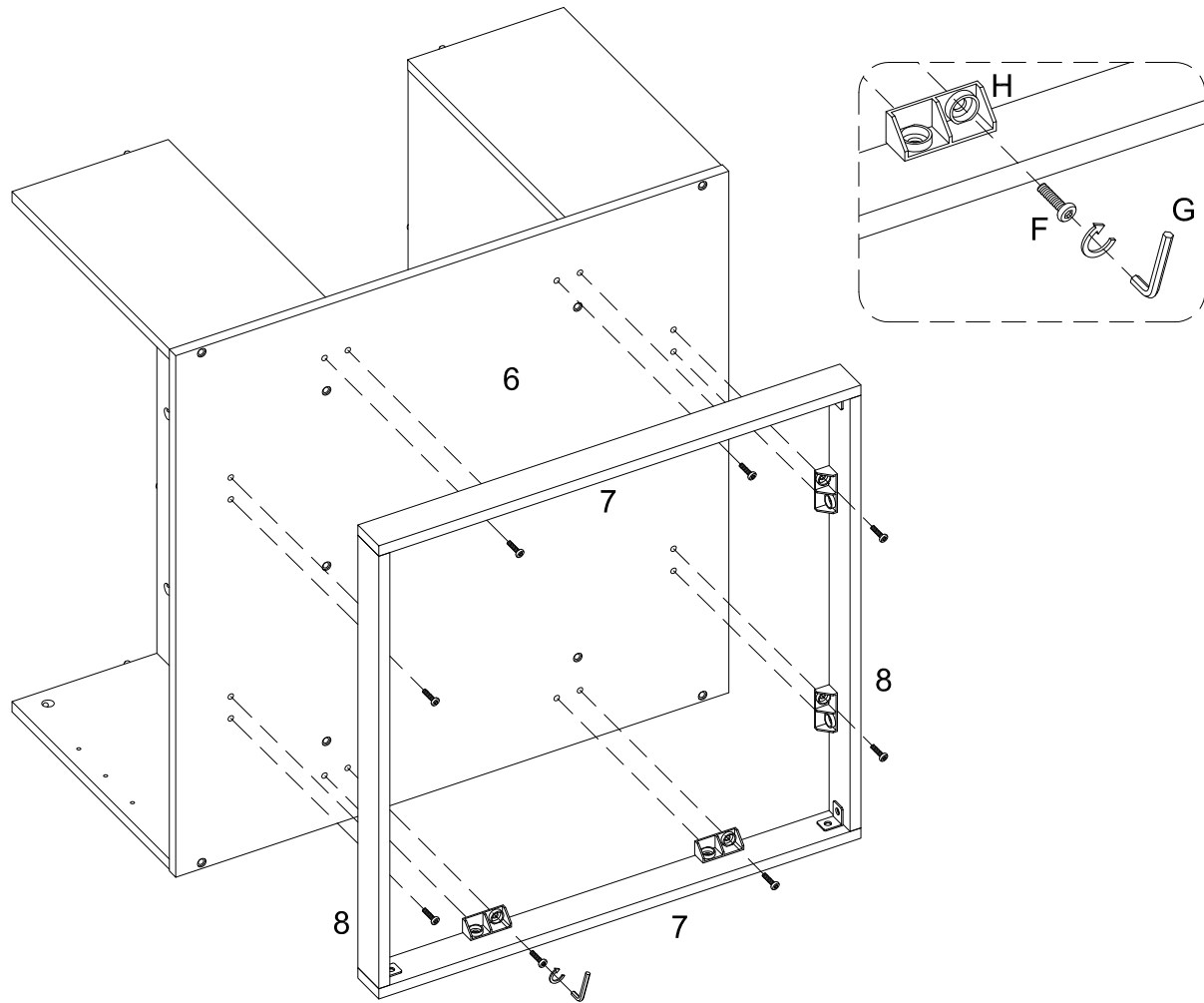
Using bolt (F) attach connecting iron sheet (J) to part (7) with Hex key (G) as per diagram.

Step 8



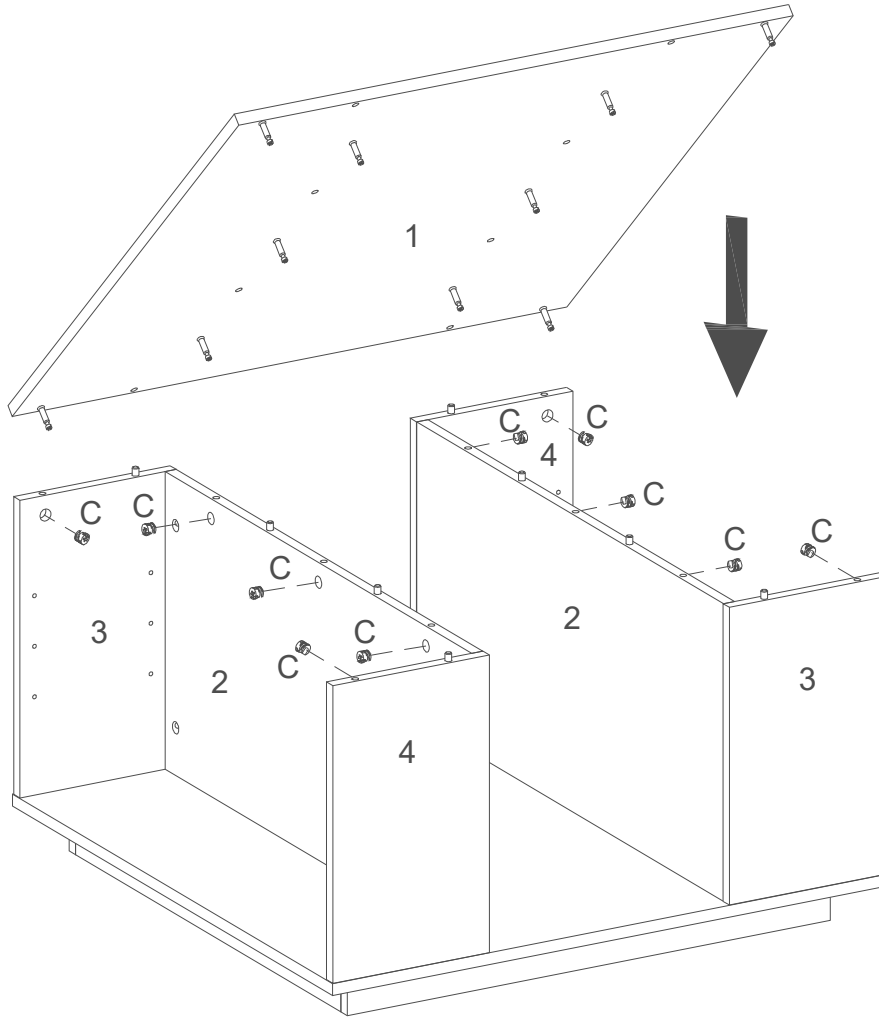
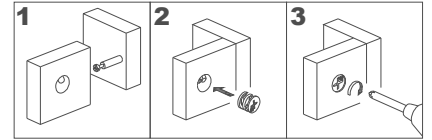
Using bolt (F) attach connecting iron sheet (J) to part (7) with Hex key (G) as per diagram.

Step 9



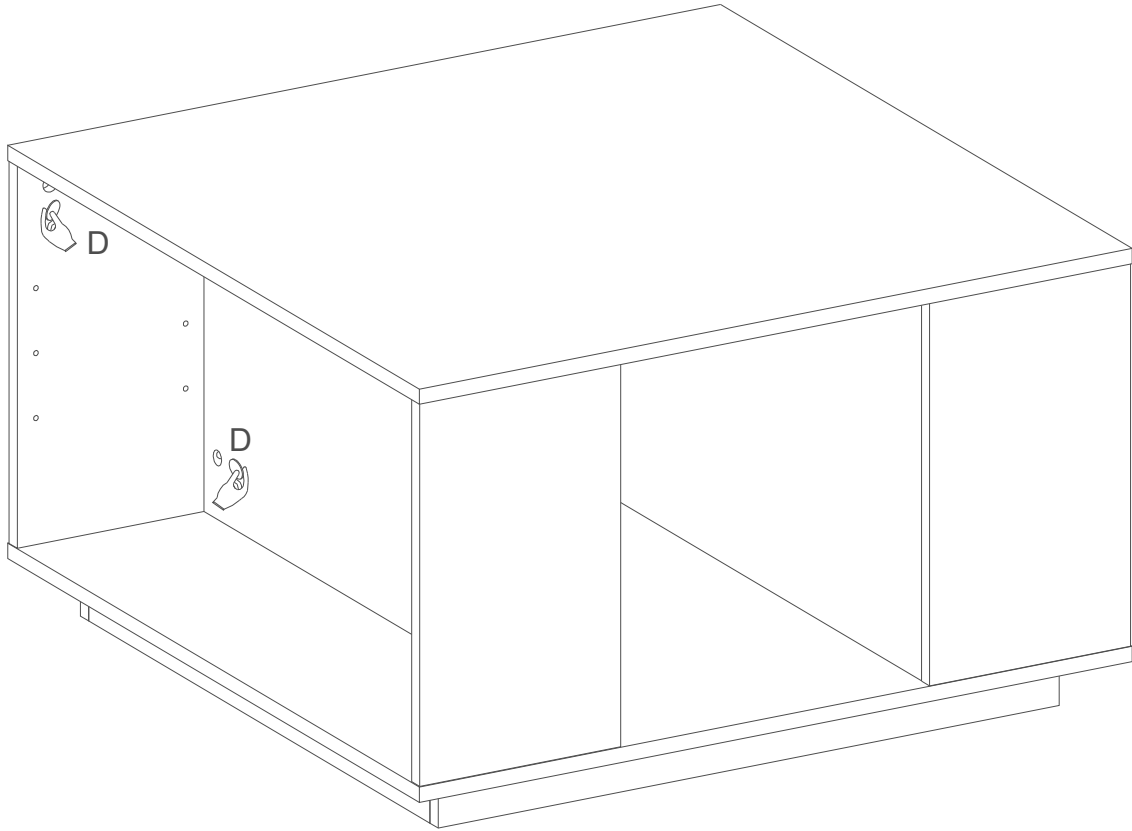
Using bolt (F) attach plastic wedge (H) to part (6) with Hex key (G) as per diagram.

Step 10



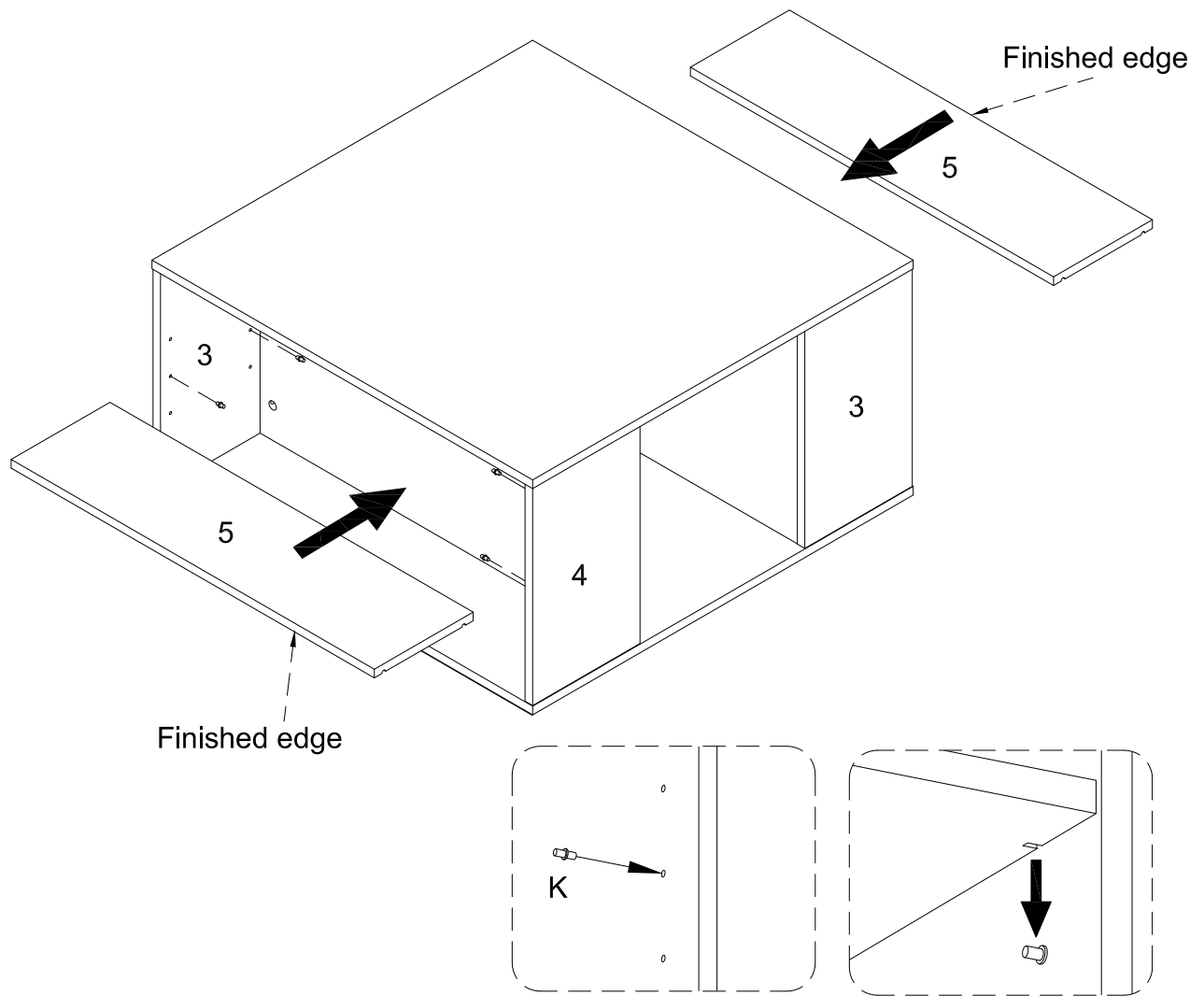
Using Cam lock (C) secure part (1) into parts (2,3,4) with Philips head screwdriver as per diagram.

Step 11



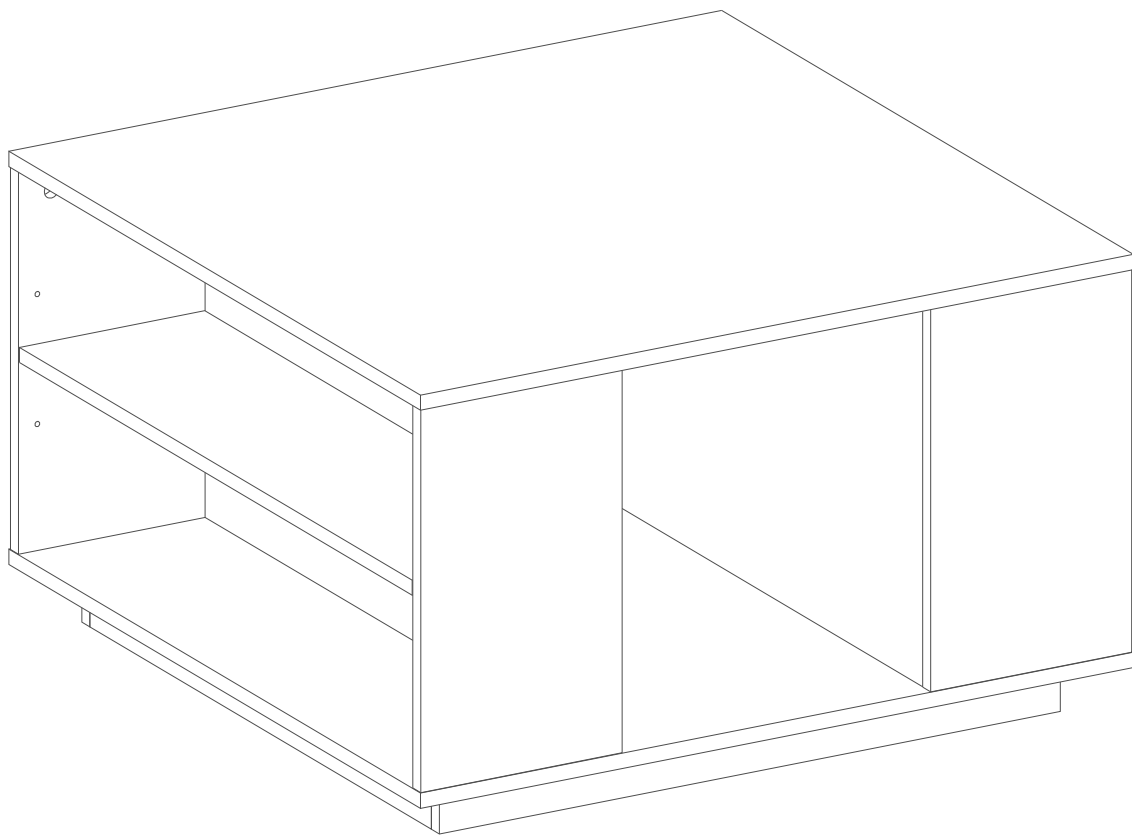
Place sticker (D) cover the holes as per diagram .

Step 12



Insert shelf support pin (K) into parts (3,4) as per diagram. Make sure you place the four shelf support pins (K) in the same level. So the shelf is not titled .Put part (5) into unit as per diagram. Tilt and rest the adjustable shelf (5) onto the shelf support pins .

Step 13



Final Assembly