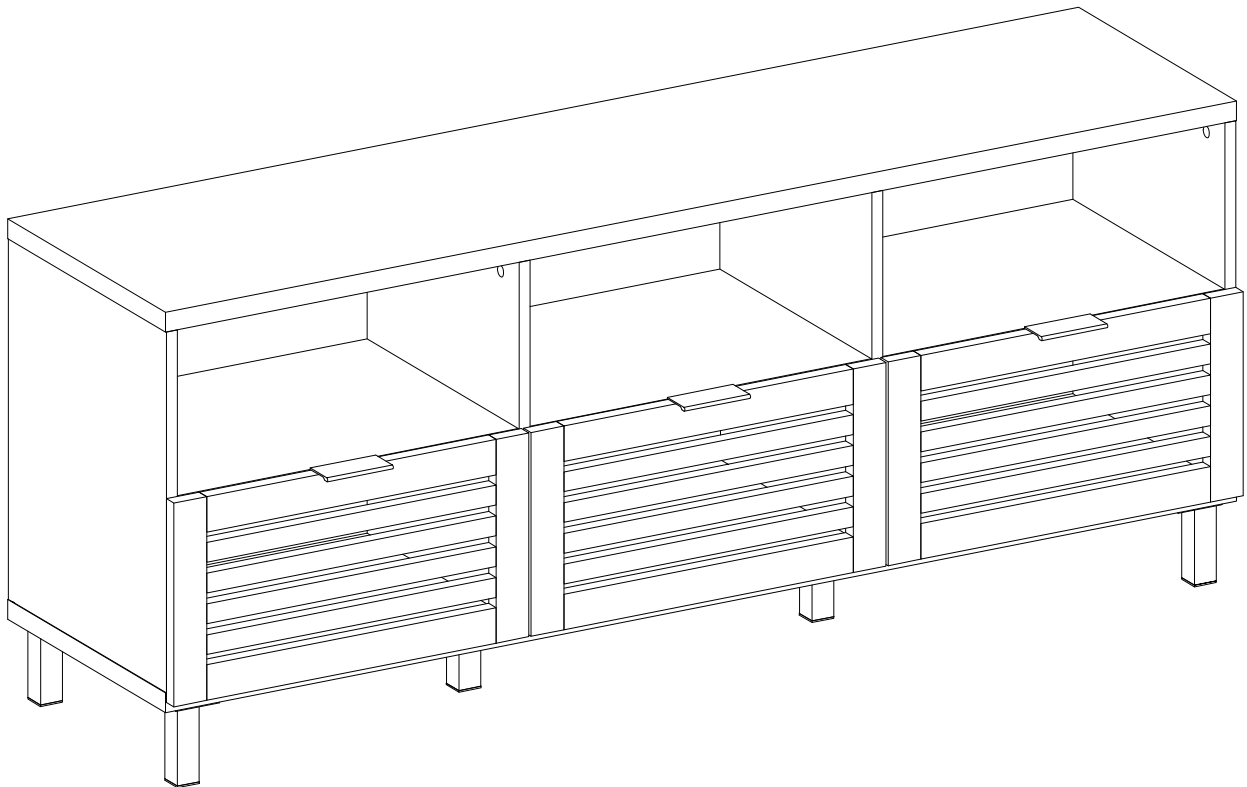


Item # : W58JACSD Assembly Instructions



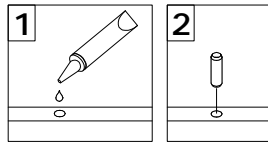
Walker Edison®

Please visit our website for the most current instructions, assembly tips, report damage, or request parts. www.walkeredison.com

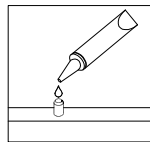
Revised 14/04/2020 (E)

General Assembly Guidelines

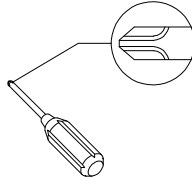
- I. Ensure that all parts and hardware are available before beginning assembly.
- II. Follow each step carefully to ensure the proper assembly of this product.
- III. Two people are recommended for ease in the assembly of this product.
- IV. The three main types of hardware used to assemble this product are : wood dowels , screws and bolts.
- V. The provided glue is to secure wood dowels in place . When first inserting dowels , locate the appropriate hole for the dowel , place a small amount of glue in the hole and insert the dowel . Wipe away excess glue immediately.



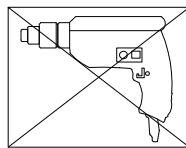
In future assembly steps when dowels are necessary to attach assembly parts together , place a small amount of glue on the end of the dowel before attaching parts together . Wipe away excess glue immediately.



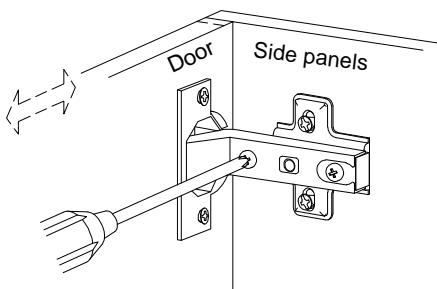
- VI. A Phillips head screwdriver is required for the assembly of this product .



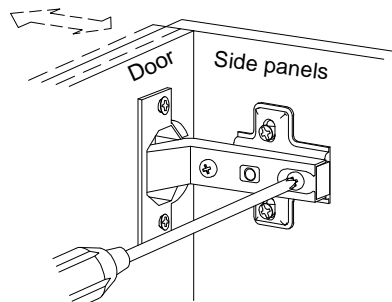
- VII. Power tools should not be used to assemble this product .



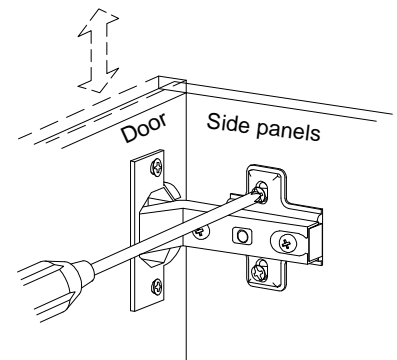
- VIII. Concealed hinges are three-way adjustable.



Horizontal
by screw adjustment

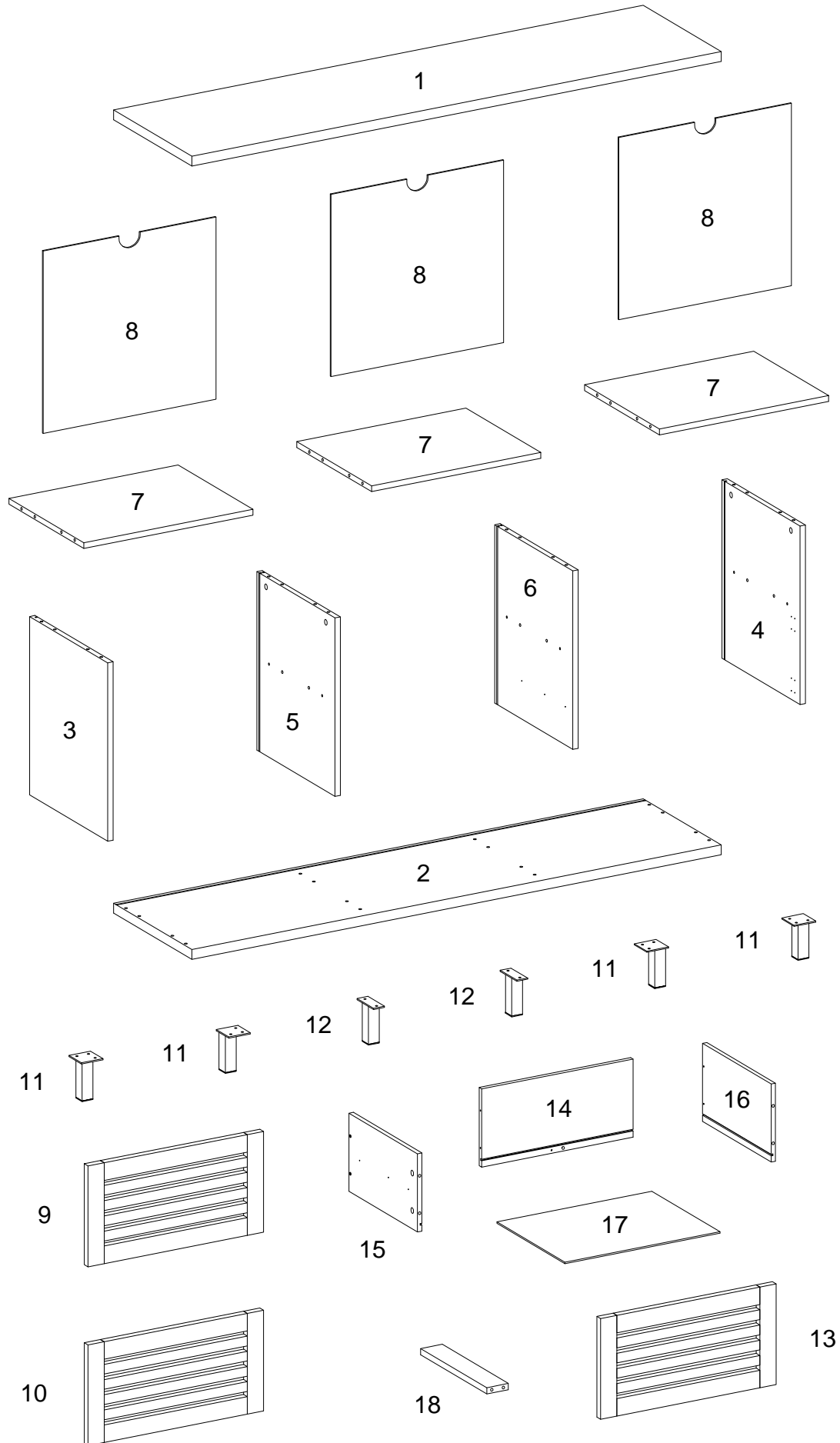


In-and-Out
by loosening the hinge-arm
mounting screw or via cam
adjustment

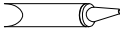


Vertical
Via slots in the mounting
plate or via cam adjustment

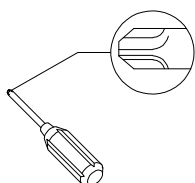
Parts List



Hardware List

A		Ø8x30mm	Wooden dowel	30	pcs
B		Ø6x35mm	Cam bolt	25	pcs
C		Ø15x11mm	Cam lock	21	pcs
D		Ø15x9mm	Cam lock	4	pcs
E		Ø30mm	Sticker	25	pcs
F		Ø6x50mm	Screw	8	pcs
G		Ø6x12mm	Bolt	16	pcs
H		M 4	Hex key	1	pc
J			Handle	3	pcs
K			Glue tube	1	pc
L		Ø3x17mm	Screw	12	pcs
M			Plastic wedge	12	pcs
N			Europe hinge	4	pcs
P		Ø3.5x14mm	Screw	24	pcs
Q		Ø4x32mm	Screw	5	pcs
R		Ø3x12mm	Screw	18	pcs
S			Drawer slider	1	set

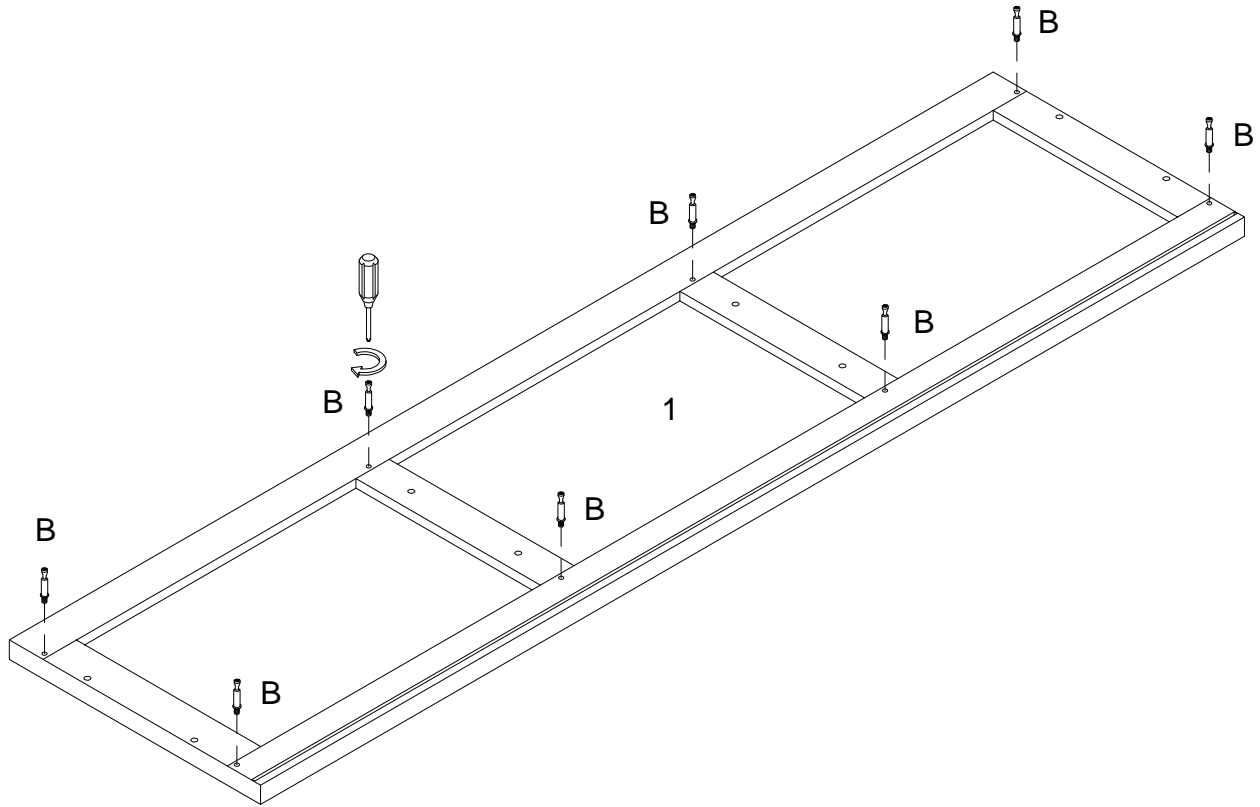
* Note: This piece comes preassembled for shipping purposes and must be disassembled to complete the desk assembly.



Philips head screwdriver required for assembly
(not included)

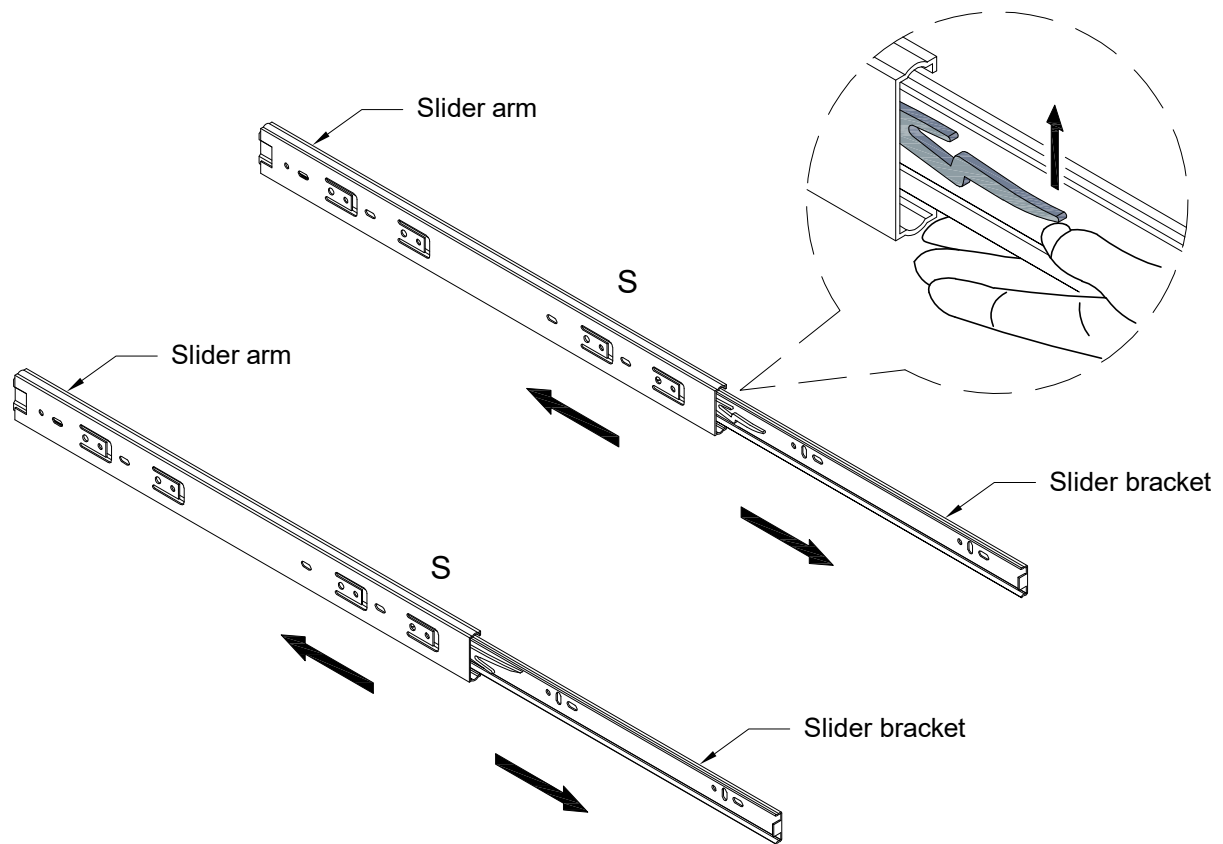
*The hardware quantities listed above are required for proper assembly.
Some extra hardware may also have been included.*

Step 1



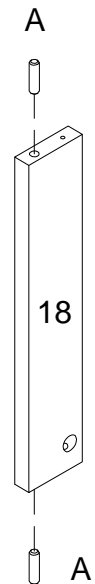
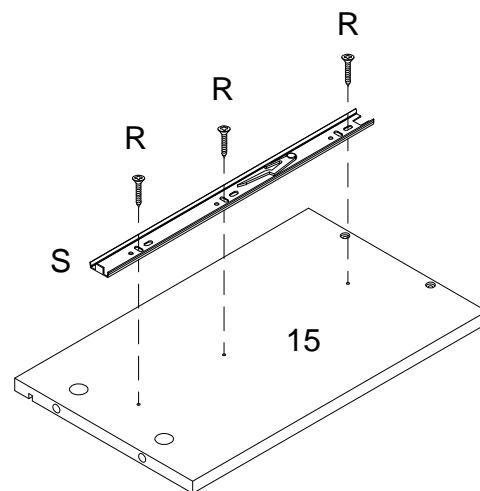
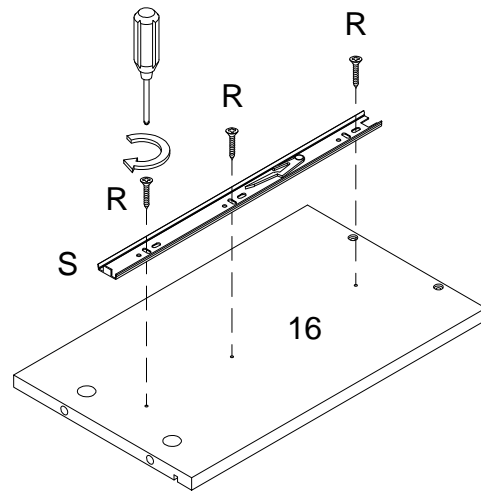
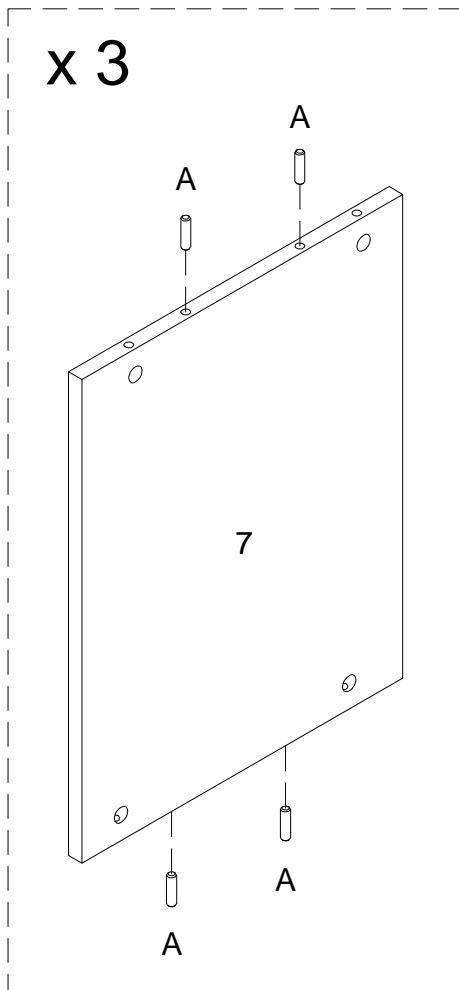
Secure cam bolt (B) into part (1) with Philips head screwdriver as per diagram.

Step 2



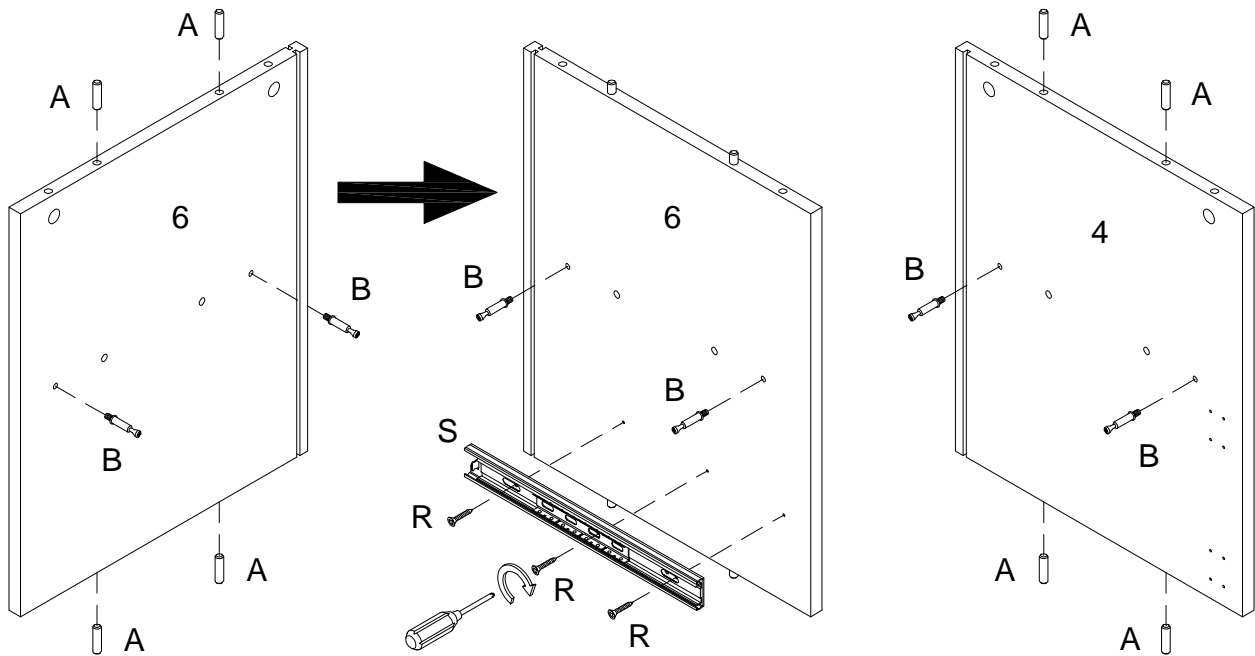
Pick up the slider (S) and separate the slide Runner for the following Steps. Extend the Slide Runner all the way forward, press the plastic release lever of the alider arm up and pull the Slide Runner Complete out .

Step 3



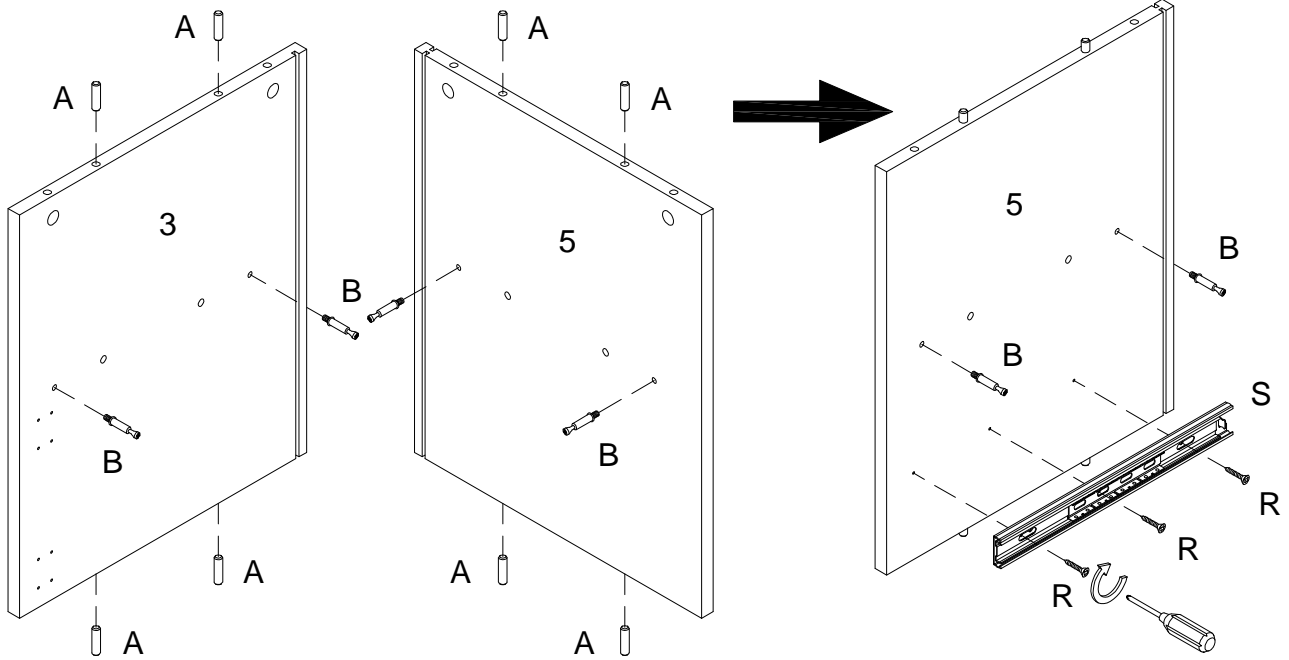
Insert wooden dowel (A) into parts (7,18) , then using screw(R) attach slider (S) to parts (15,16) with Philips head screwdriver as per diagram.

Step 4



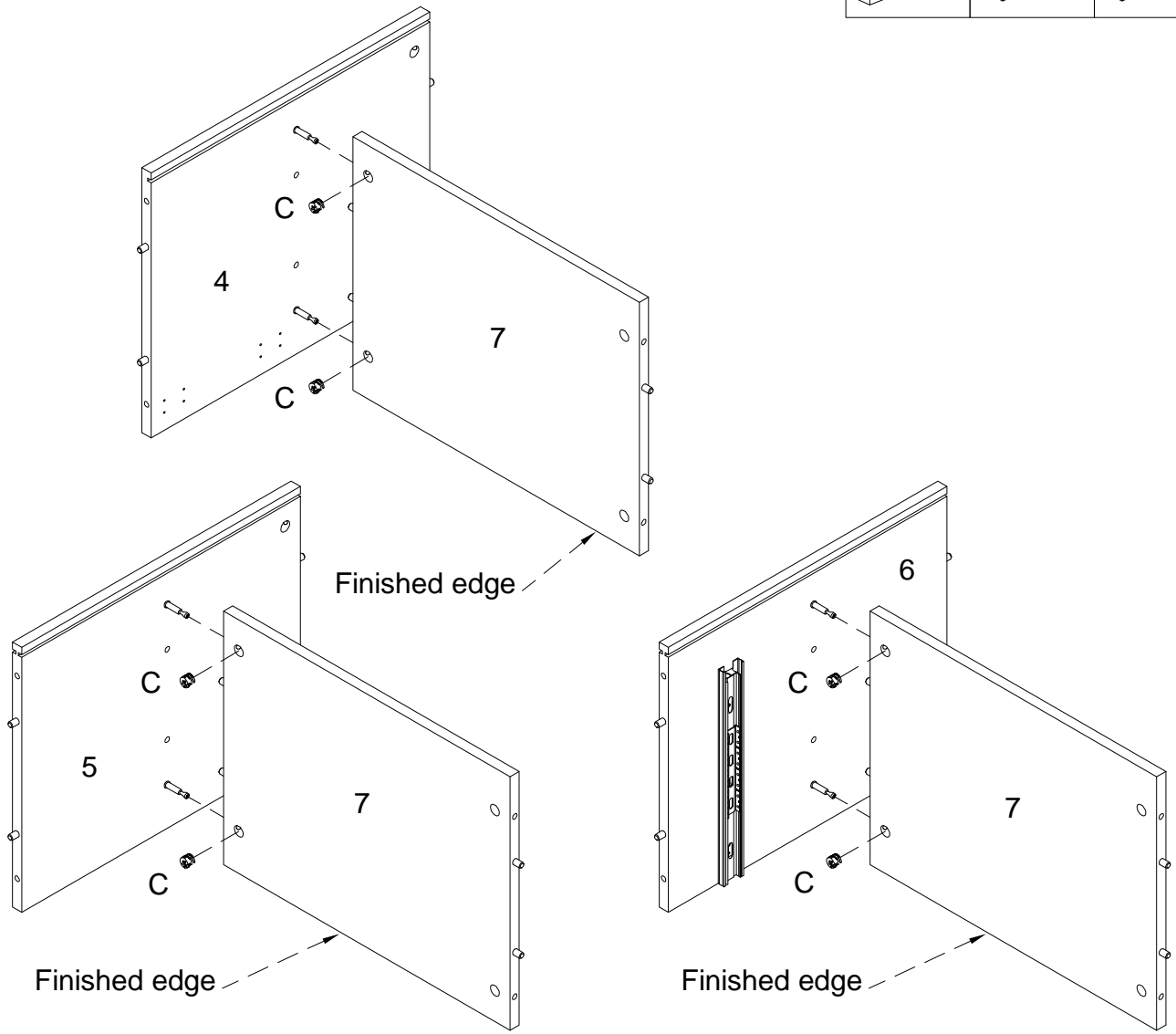
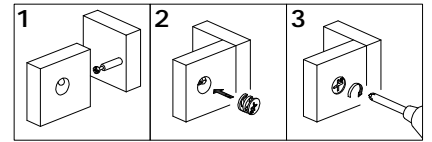
Insert wooden dowel (A) into parts (4,6) , then secure cam bolt (B) into parts (4,6), and using screw(R) attach slider (S) to part (6) with Philips head screwdriver as per diagram.

Step 5



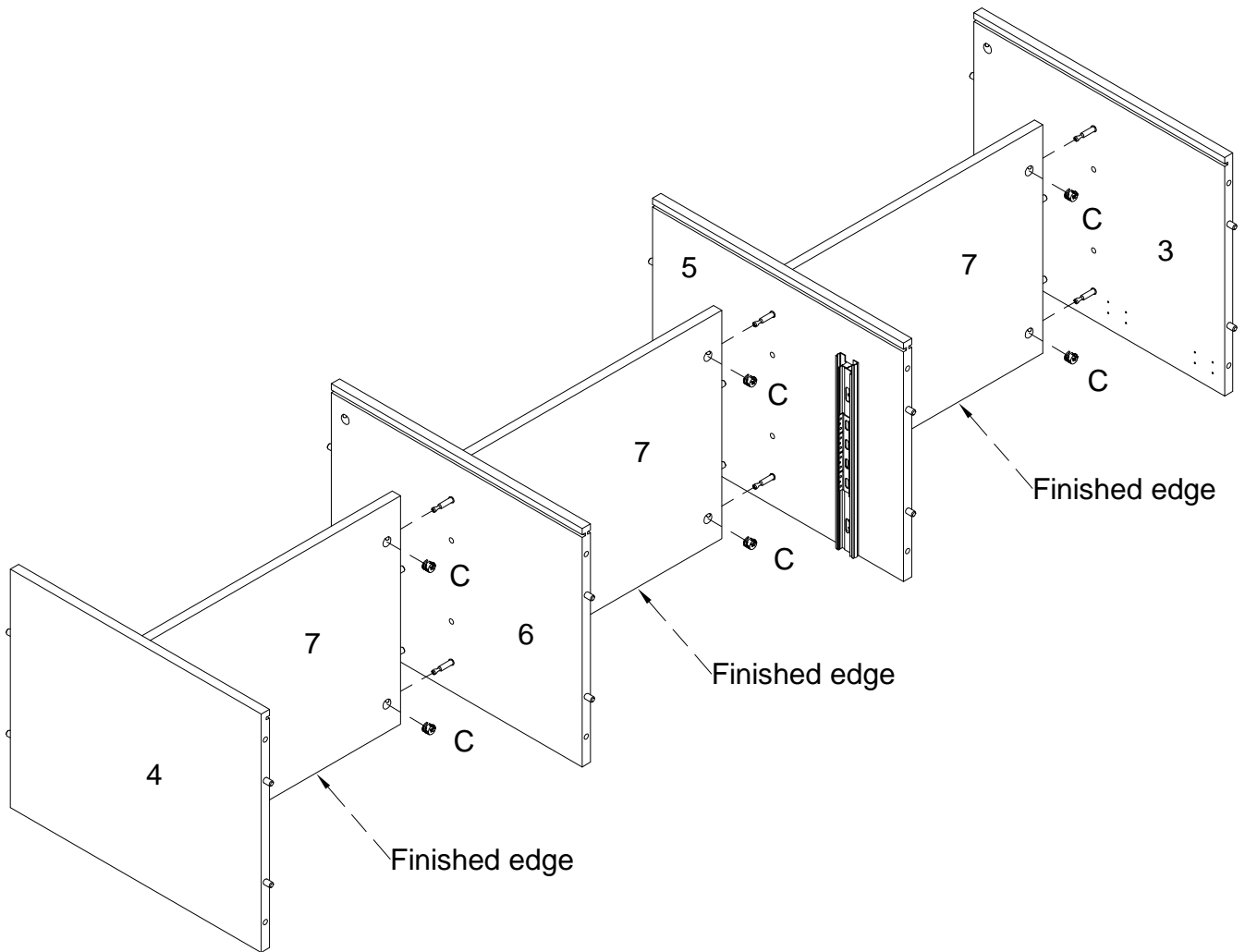
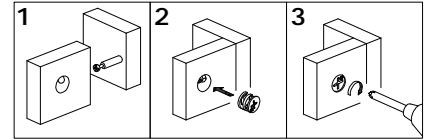
Insert wooden dowel (A) into parts (3,5) , then secure cam bolt (B) into parts (3,5), and using screw(R) attach slider (S) to part (5) with Philips head screwdriver as per diagram.

Step 6



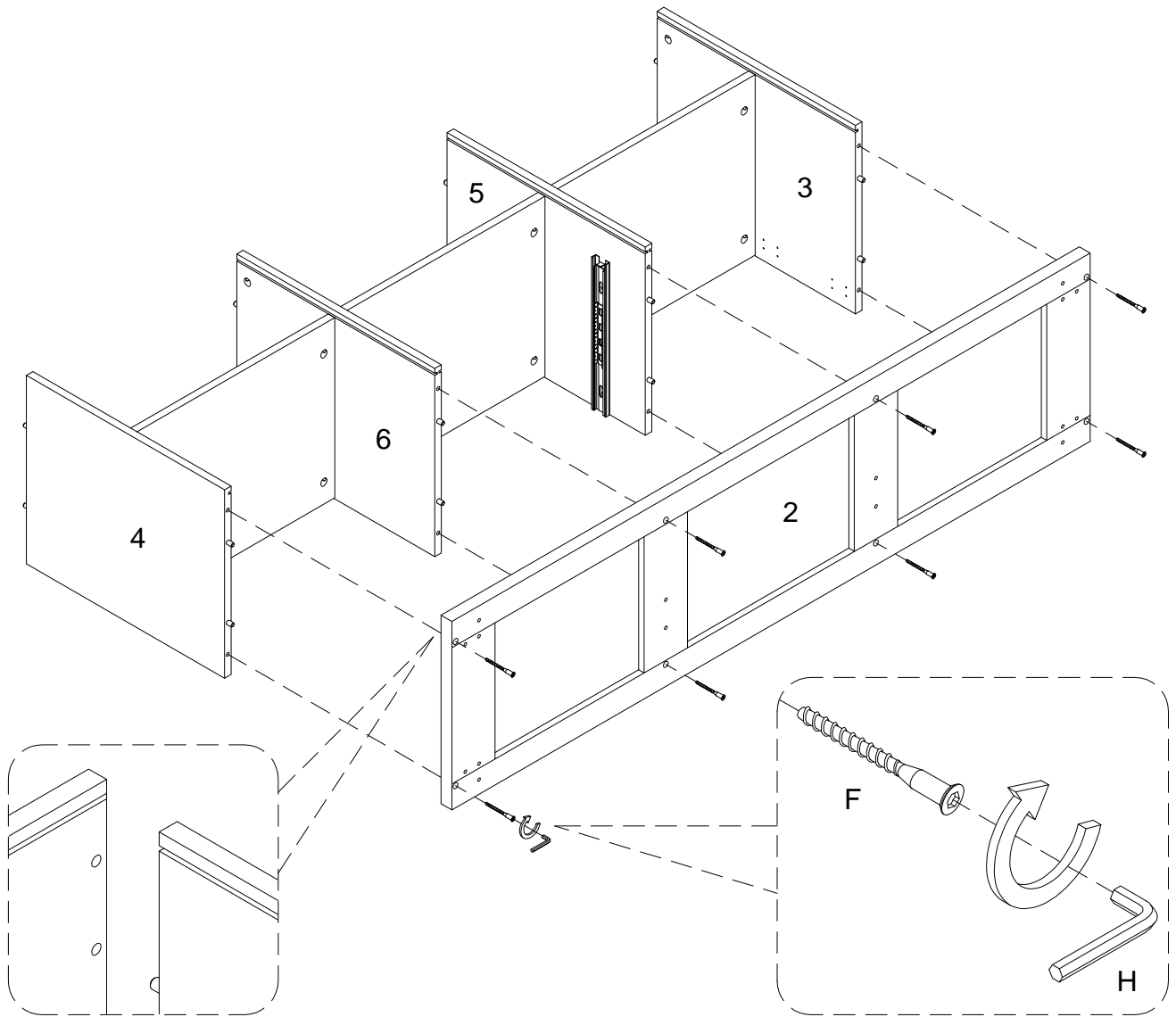
Using cam lock (C) secure part (7) into parts (4,5,6) with Philips head screwdriver as per diagram.

Step 7



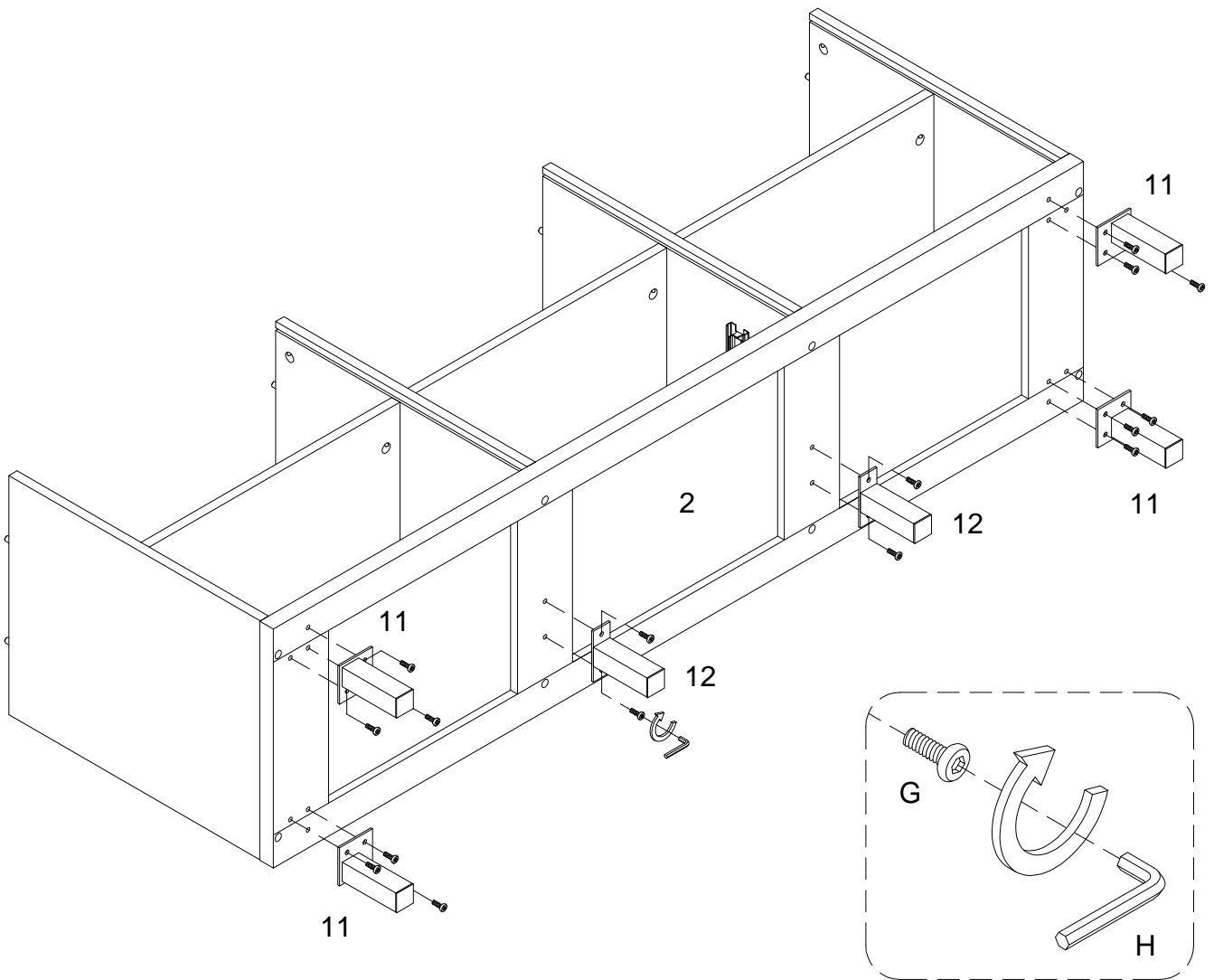
Using cam lock (C) secure part (7) into parts (3,5,6) with Philips head screwdriver as per diagram.

Step 8



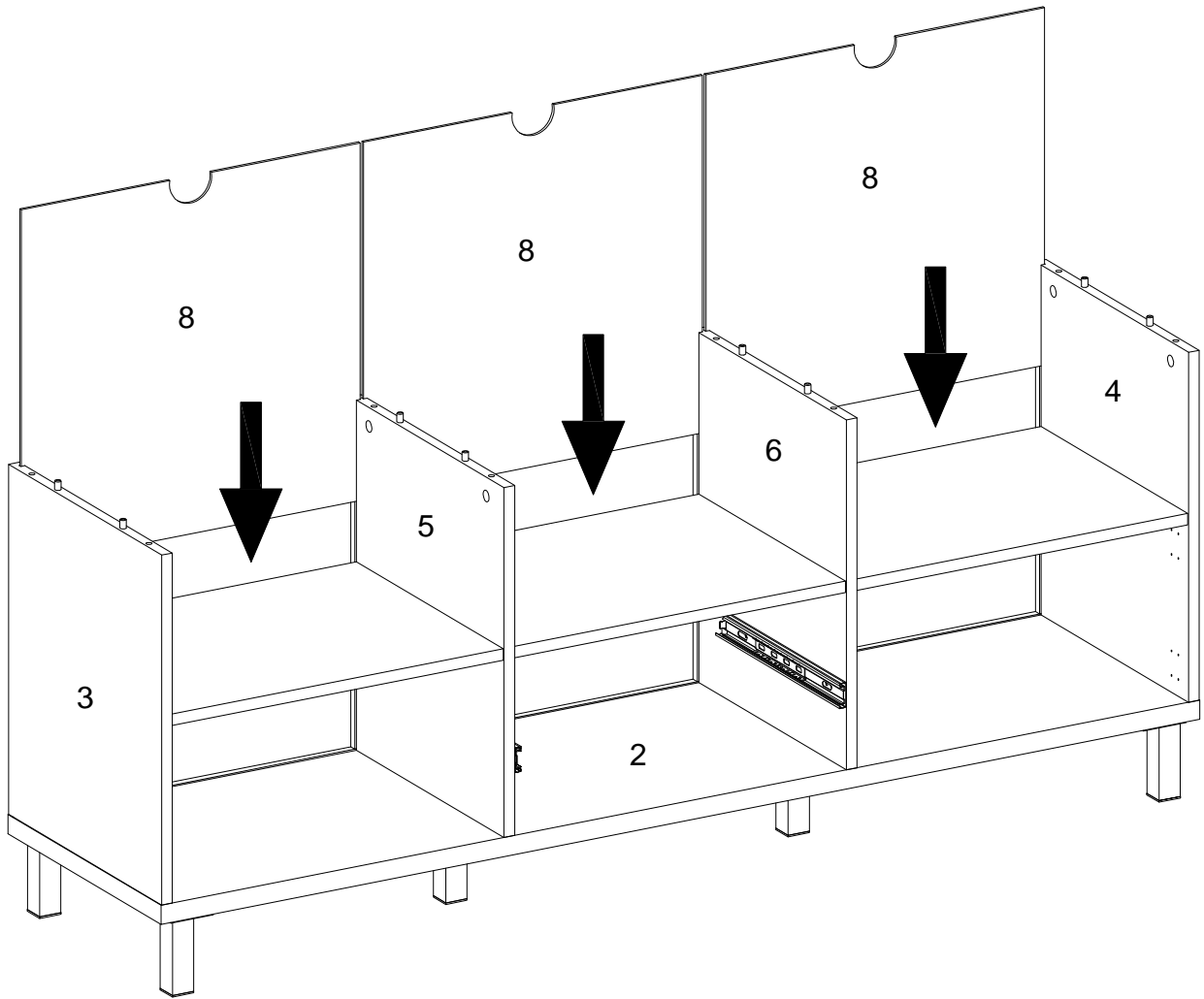
Using screw (F) attach part (2) into parts (3,4,5,6) with hex key (H) as per diagram.

Step 9



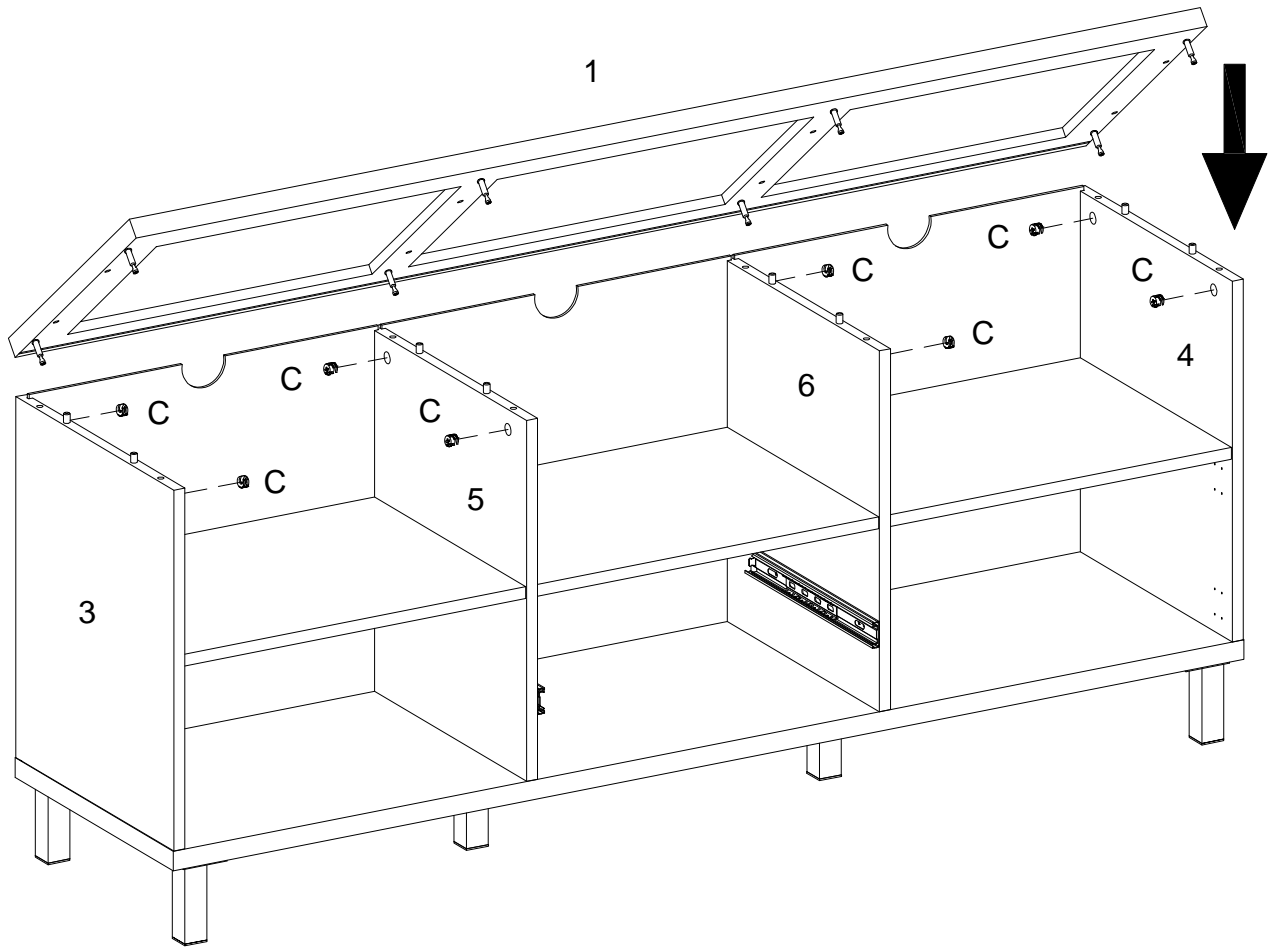
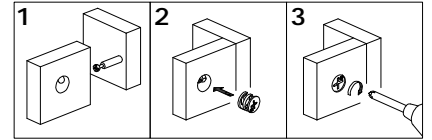
Using bolt (G) attach parts (11,12) to part (2) with hex key (H) as per diagram.

Step 10



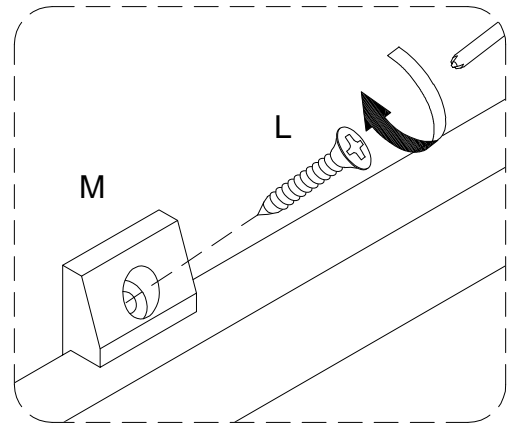
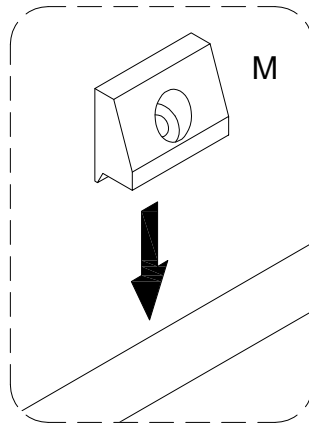
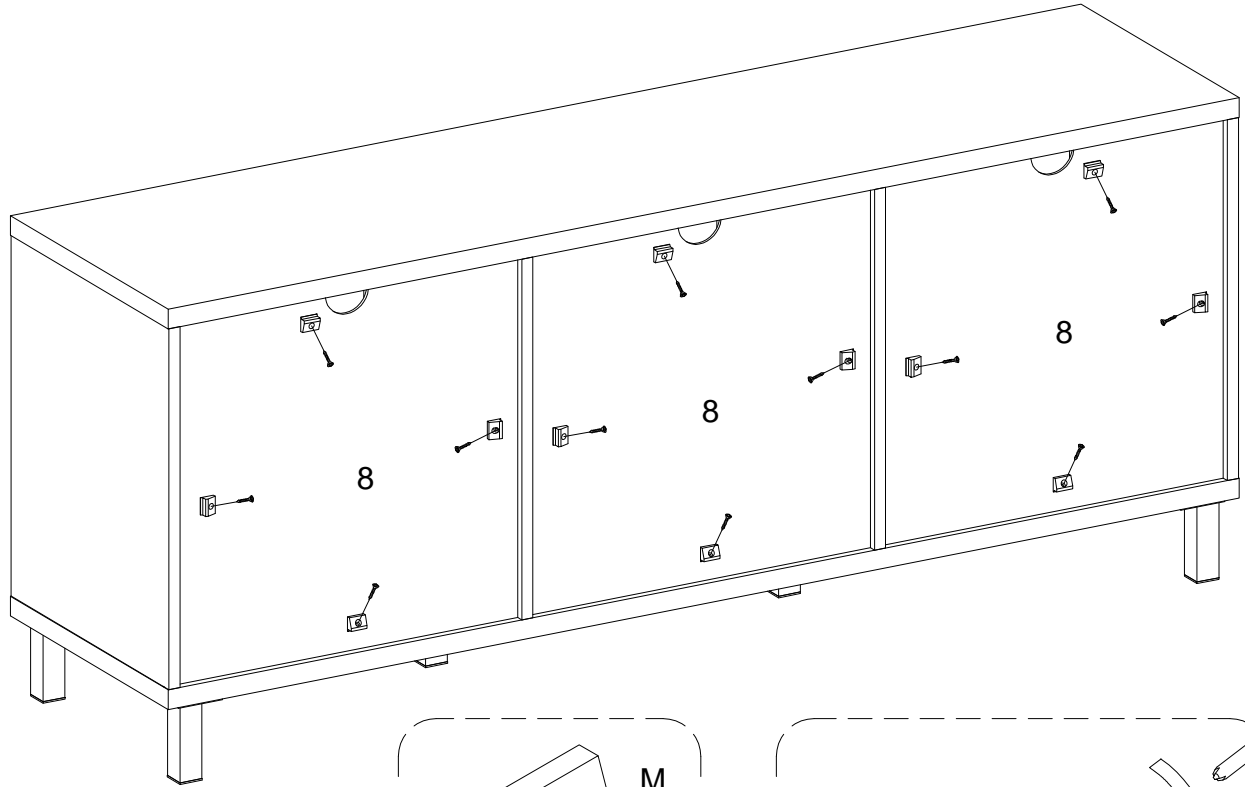
Put part (8) as per diagram.

Step 11



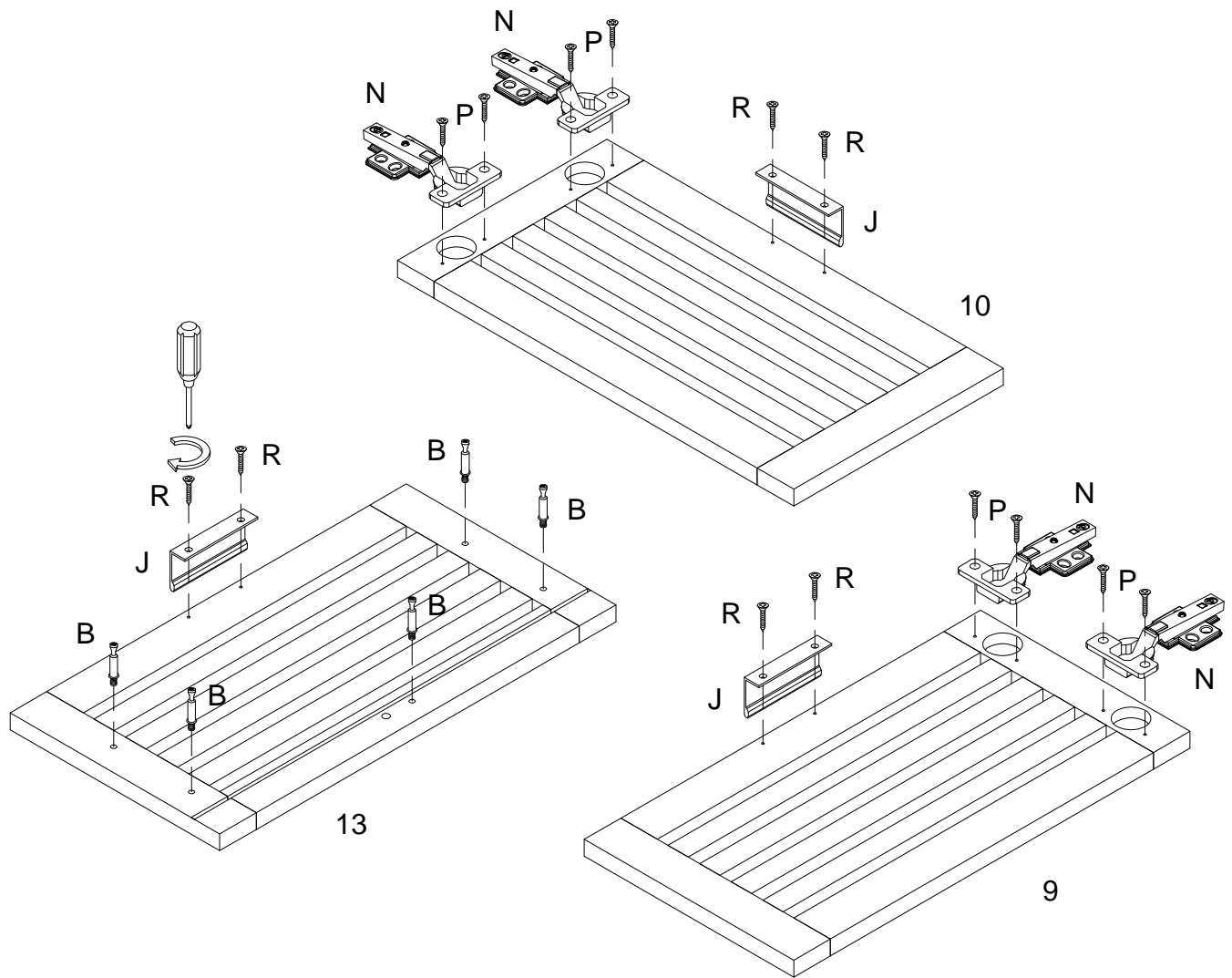
Using cam lock (C) secure part (1) into parts (3,4,5,6) with Philips head screwdriver as per diagram.

Step 12



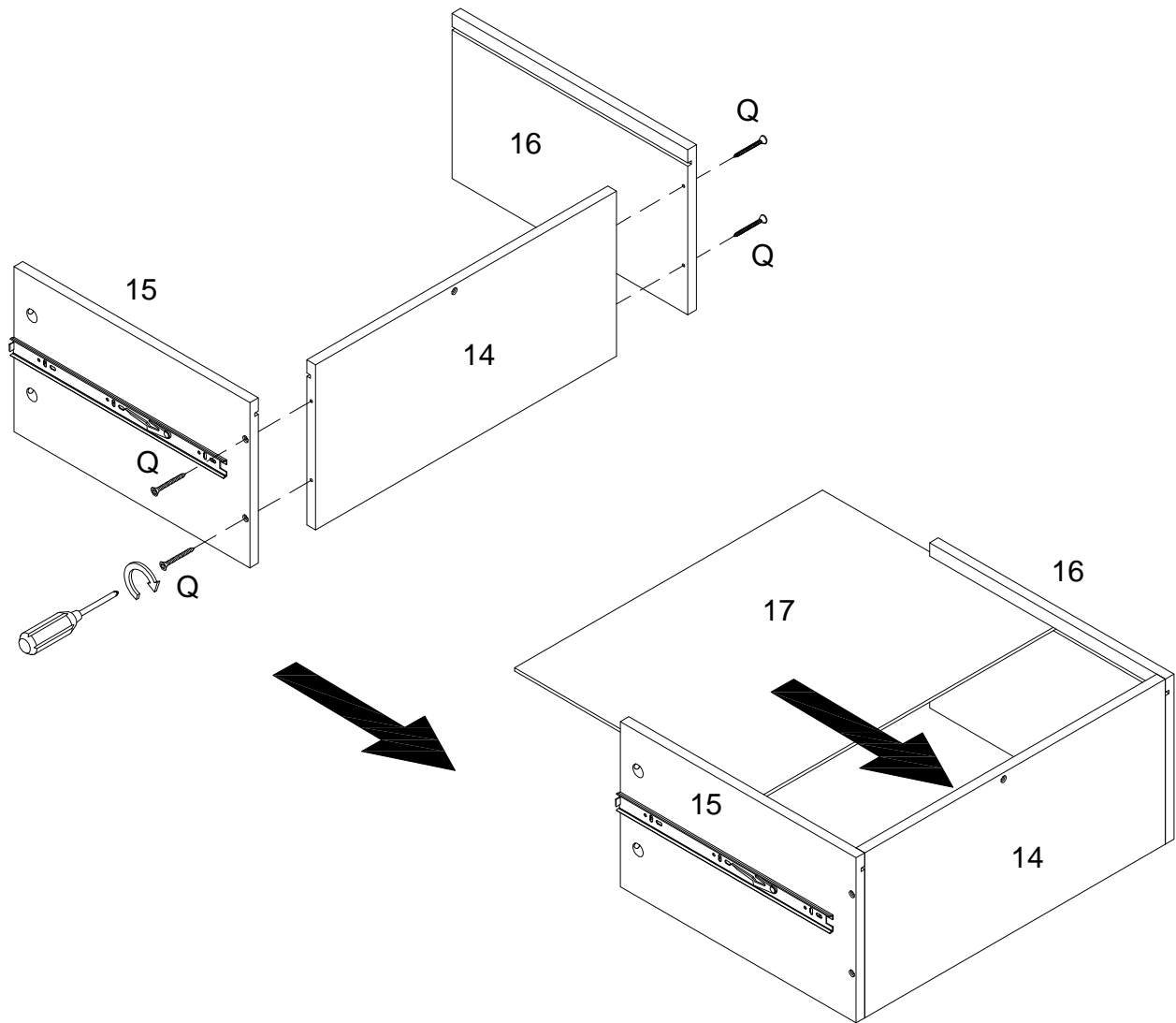
Using screw (L) secure plastic wedge (M) with Philips head screwdriver as per diagram.

Step 13



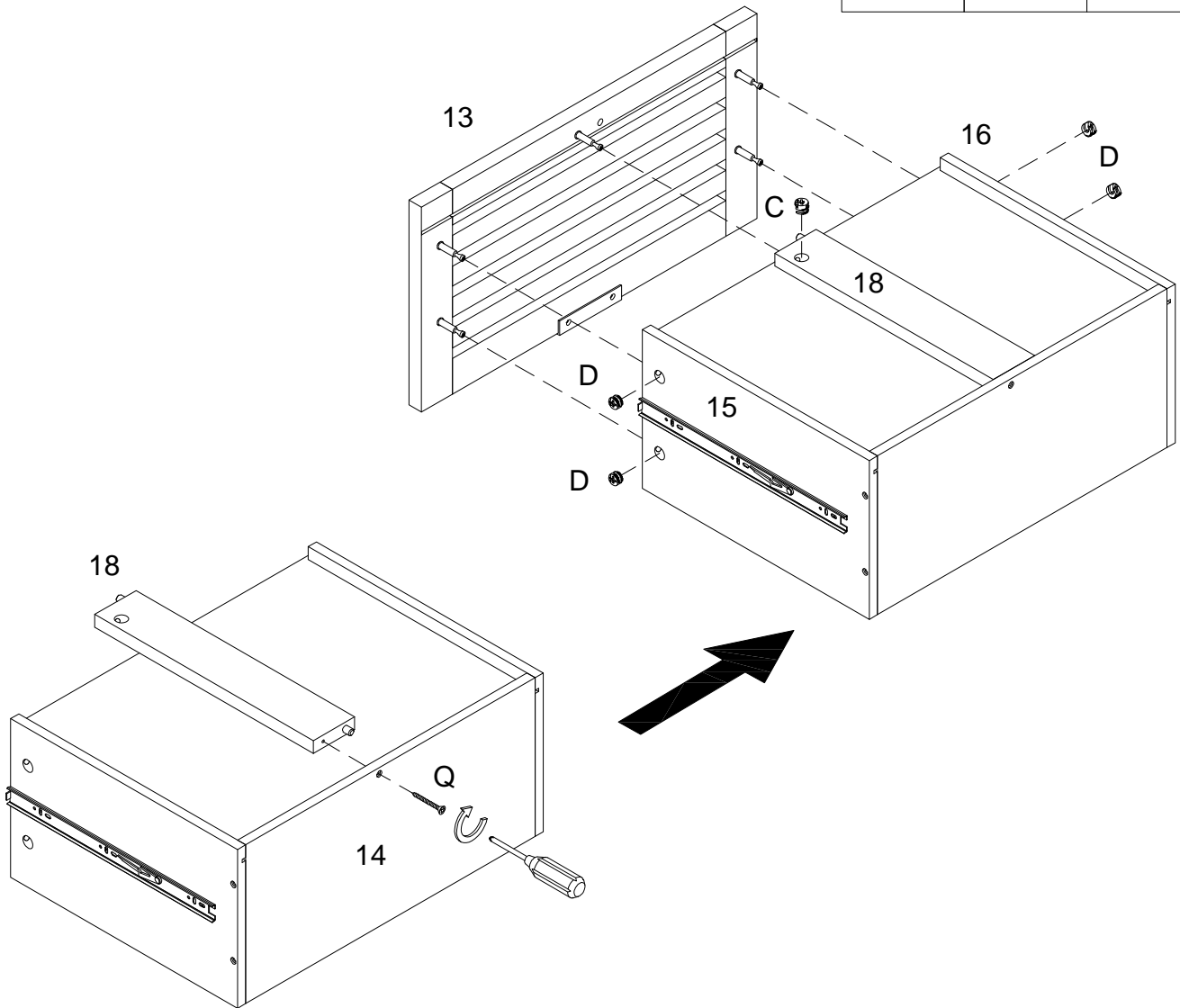
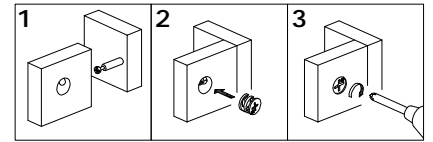
Secure cam bolt (B) into part (13) , then using screw (R) attach handle (J) to parts (9,10,13) and using screw (P) attach Europe Hinge (N) to parts (9,10) with Philips head screwdriver as per diagram.

Step 14



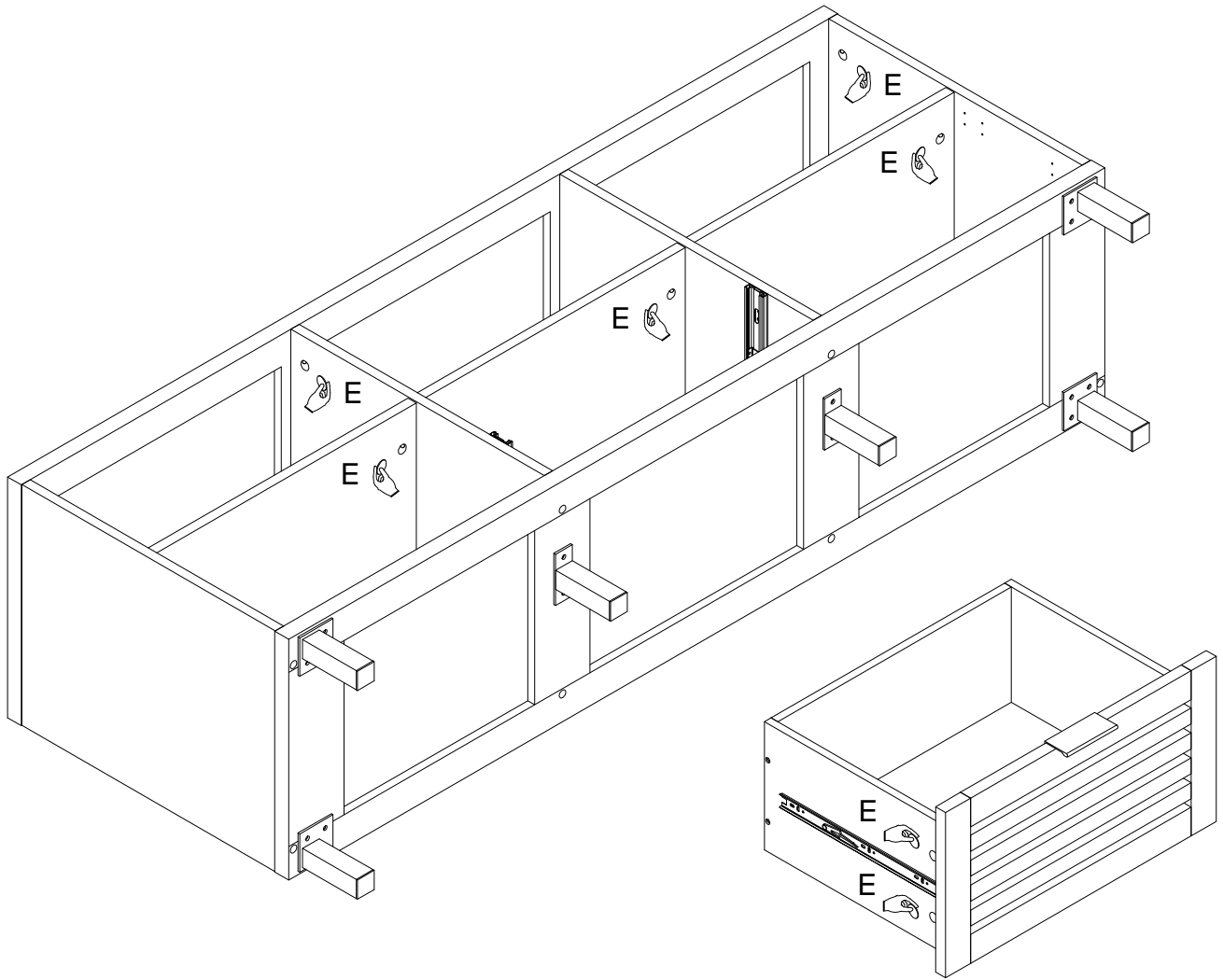
Using screw (Q) attach parts (15,16) to part (14) with Philips head screwdriver ,then put part (17) as per diagram.

Step 15



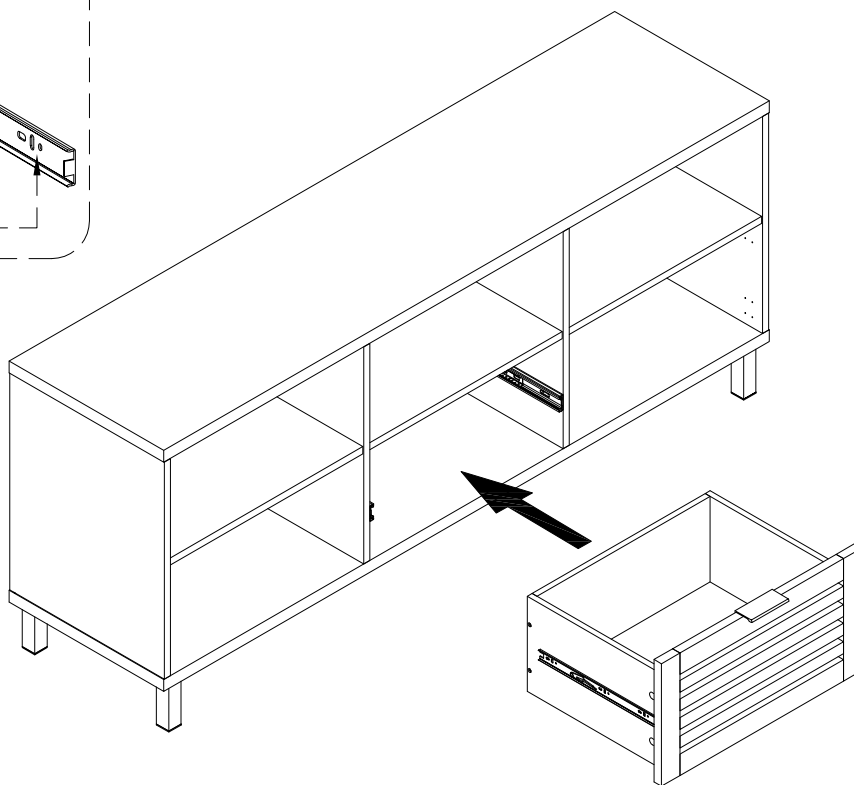
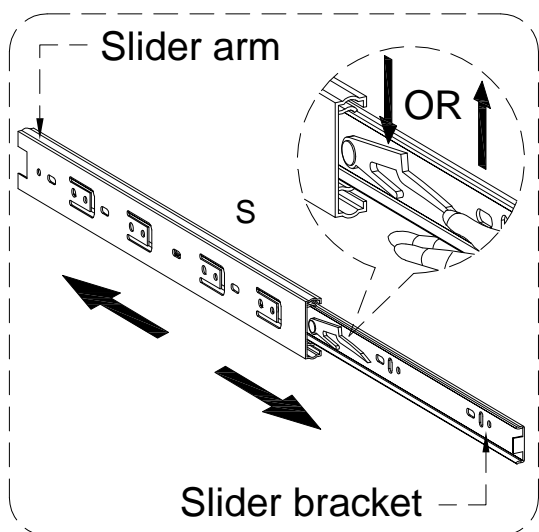
Using screw (Q) secure part (14) to part (18) ,then using cam lock (D) secure part (13) to parts (15,16) , cam lock (C) secure part (13) to part (18) with Philips head screwdriver per diagram.

Step 16



Place stickers (E) cover the holes as per diagram .

Step 17

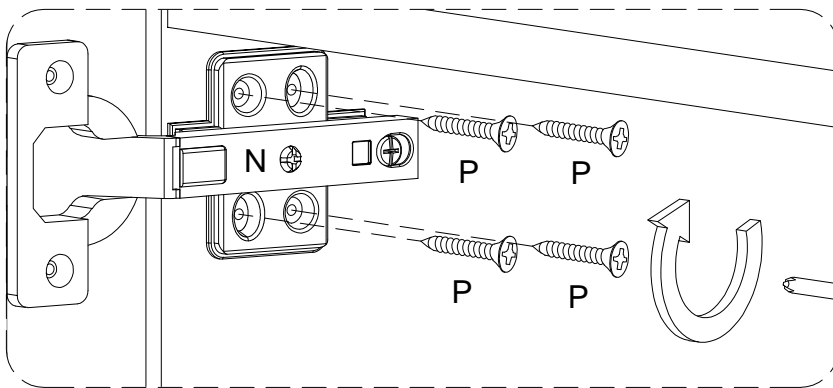
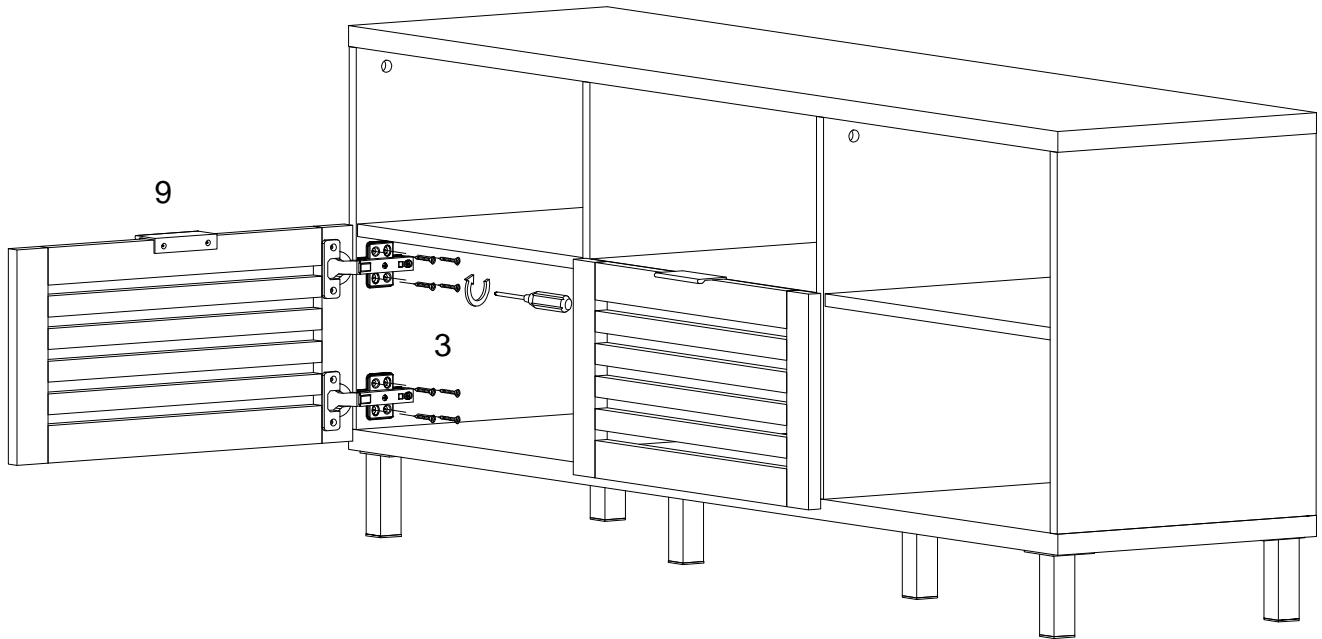


Assembled the drawers as per diagram

Note :If the drawer does not go in smoothly .Press or lift the plastic release lever .

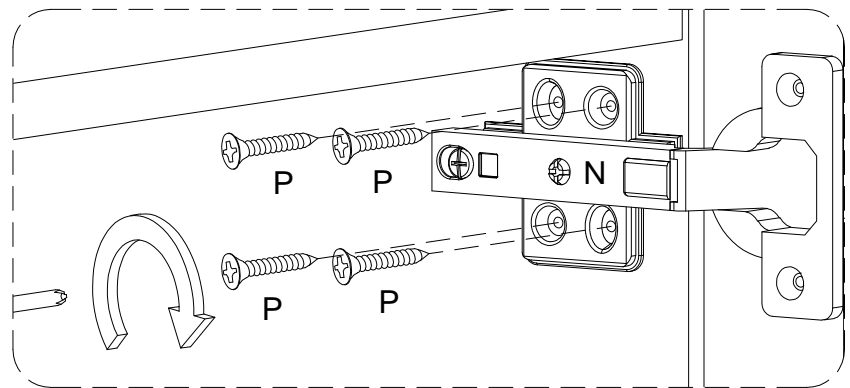
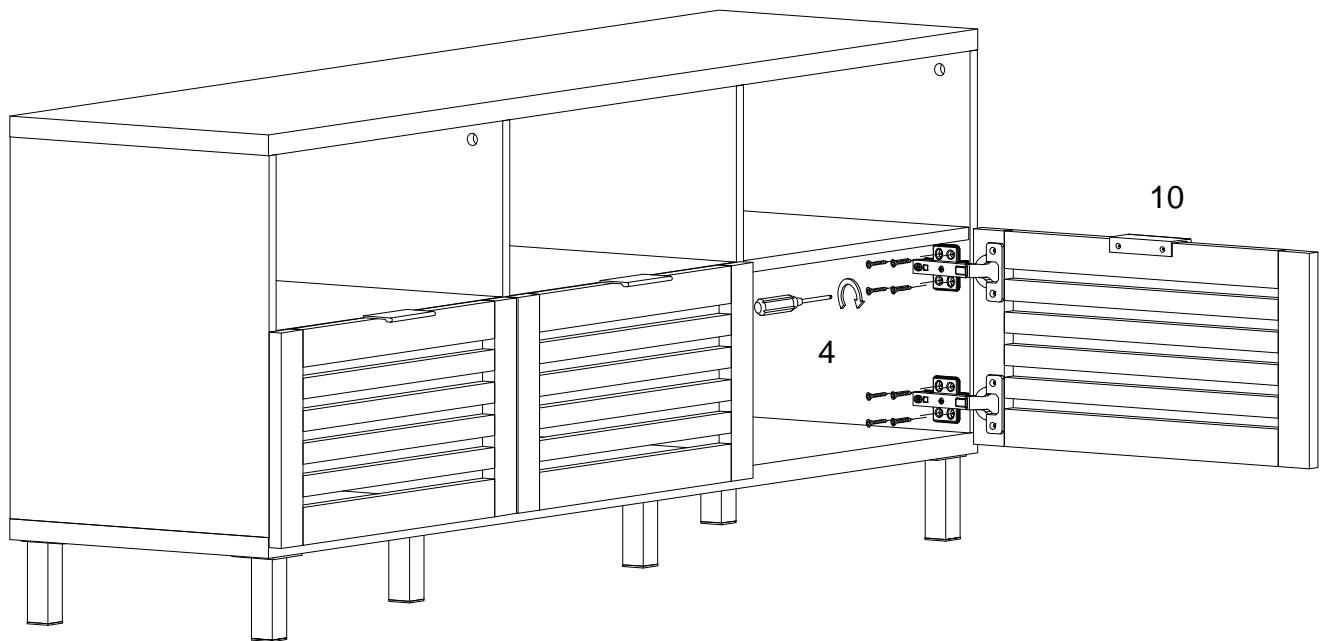
Pull out the slider bracket from the slider arm then re-assembled the drawer until they were going in smoothly well .

Step 18



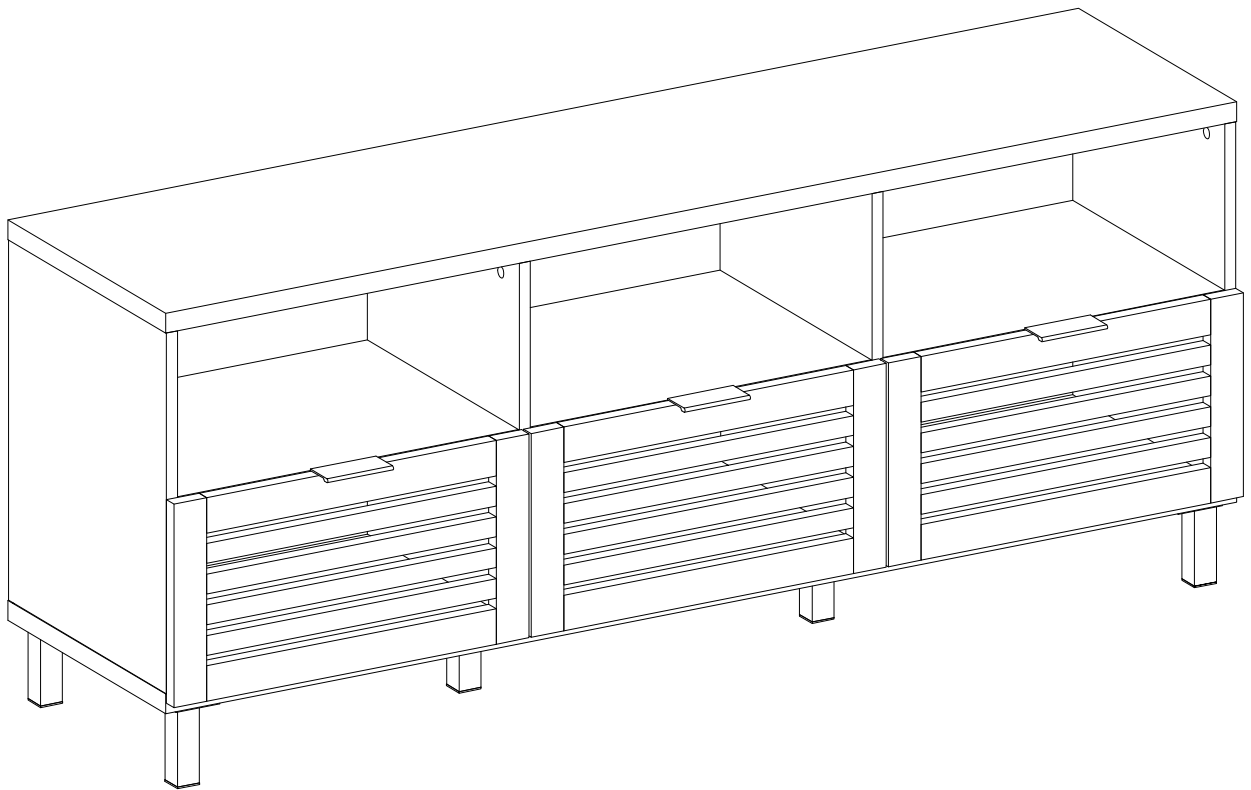
Using screw (P) attach Europe hinge (N) to part (3) with Philips head screwdriver as per diagram.

Step 19



Using screw (P) attach Europe hinge (N) to part (4) with Philips head screwdriver as per diagram.

Step 20



Final Assembly