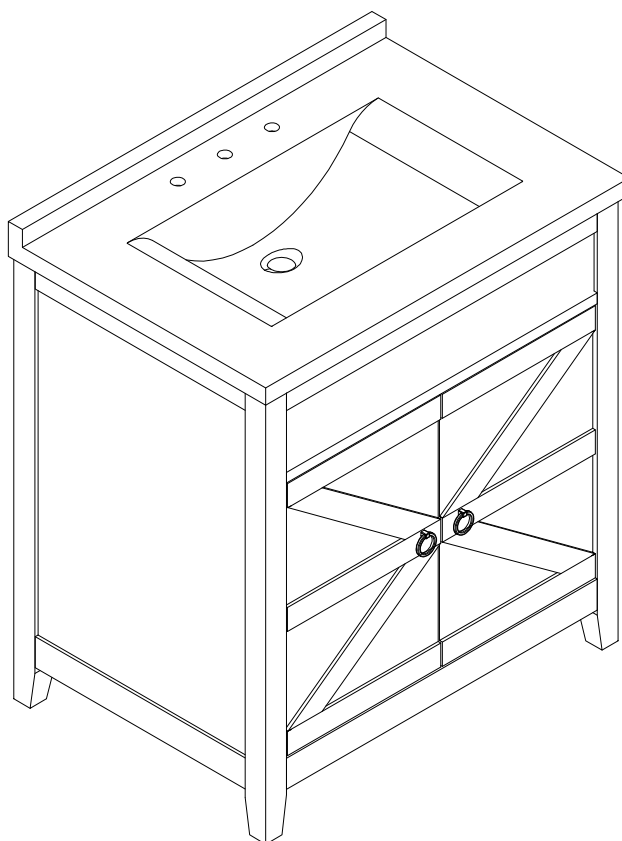


ASSEMBLY INSTRUCTION










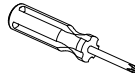
12 495 - VANITY



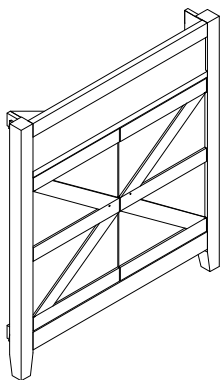
ASSEMBLY INSTRUCTION

12 495 - VANITY

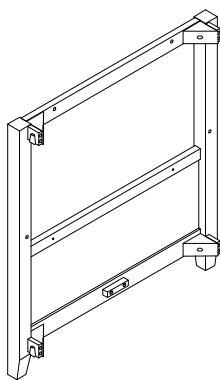
HARDWARE LIST

									
① M4x70mm = 1pc	② M6x35mm = 4pcs	③ M6xØ16mm = 6 pcs	④ Ø8x40mm = 2pcs	⑤ M4x50mm =2pcs	⑥ M4x25mm = 4pcs	⑦ 2pcs	leveler 4pcs	Silicone	ToolsNeeded

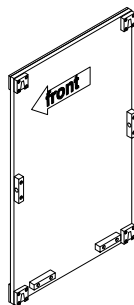
COMPONENT



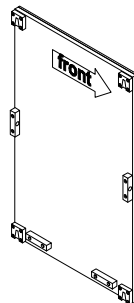
① A x1pc



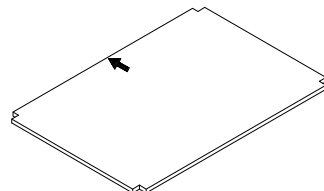
② B x1pc



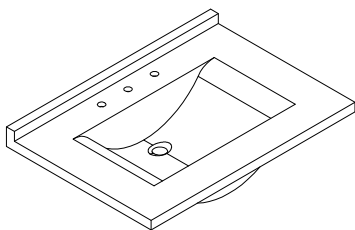
③ C x1pc



④ D x1pc



⑤ E x 1pc

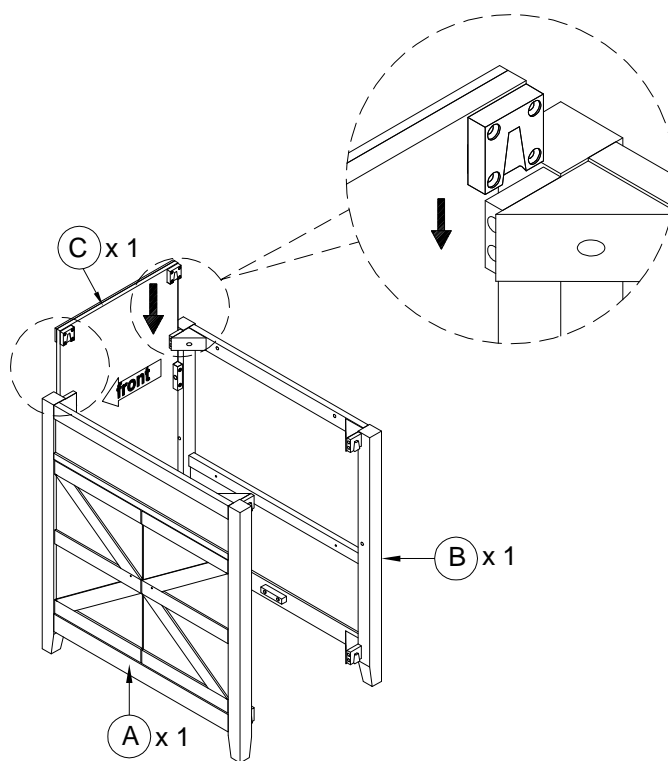


⑥ F x 1pc

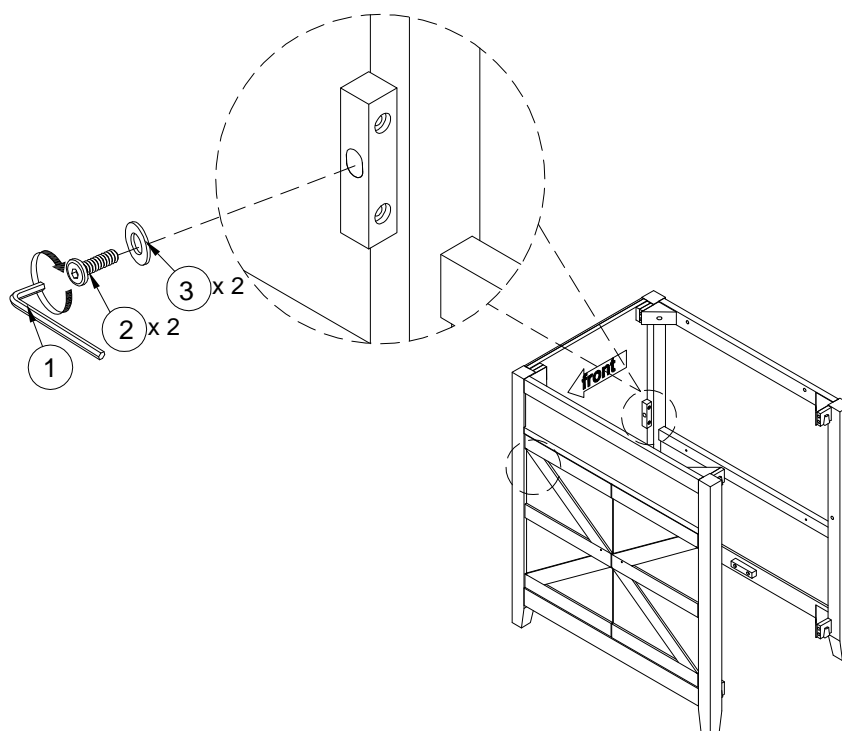
ASSEMBLY INSTRUCTION

12 495 - VANITY

Step 1



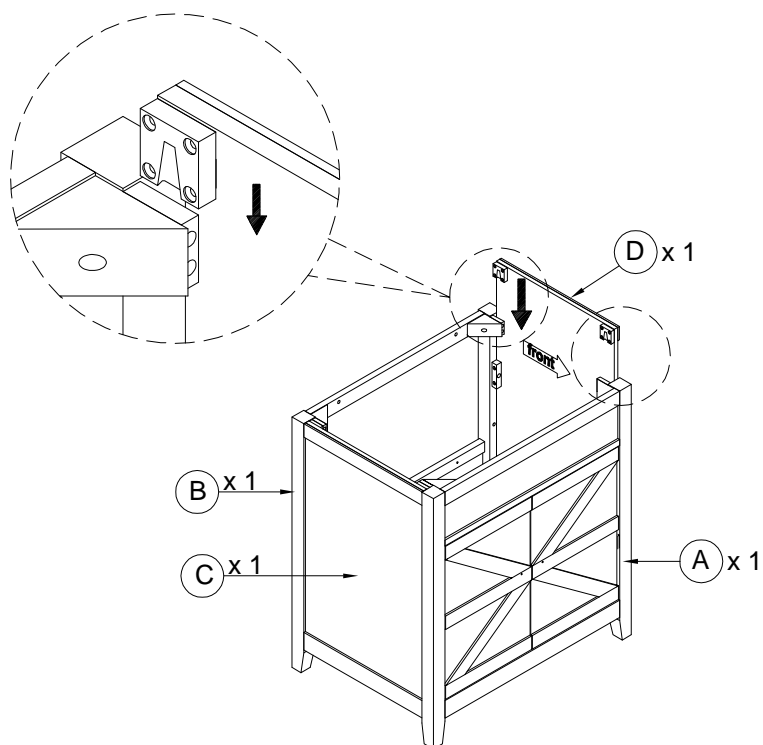
Step 2



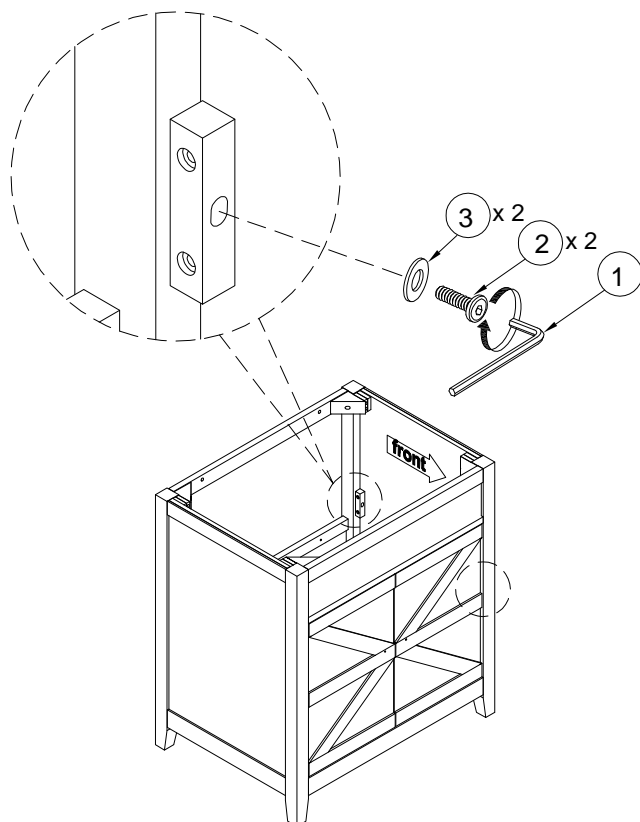
ASSEMBLY INSTRUCTION

12 495 - VANITY

Step 3



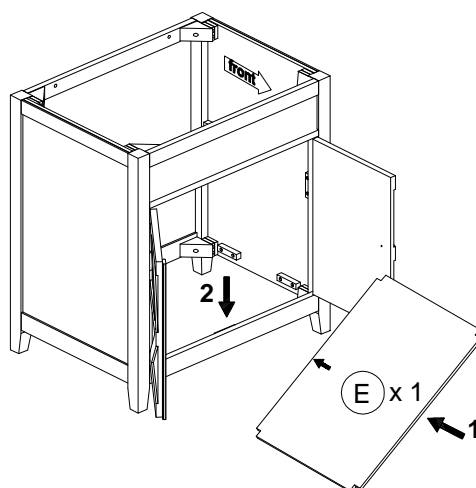
Step 4



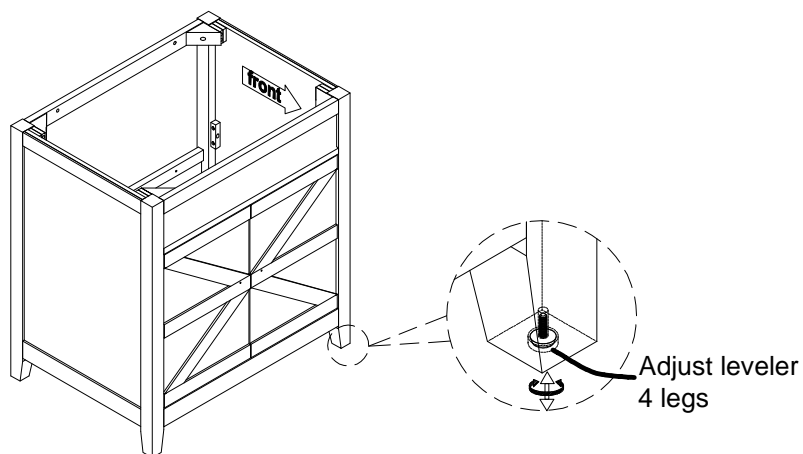
ASSEMBLY INSTRUCTION

12 495 - VANITY

Step 5



Step 6

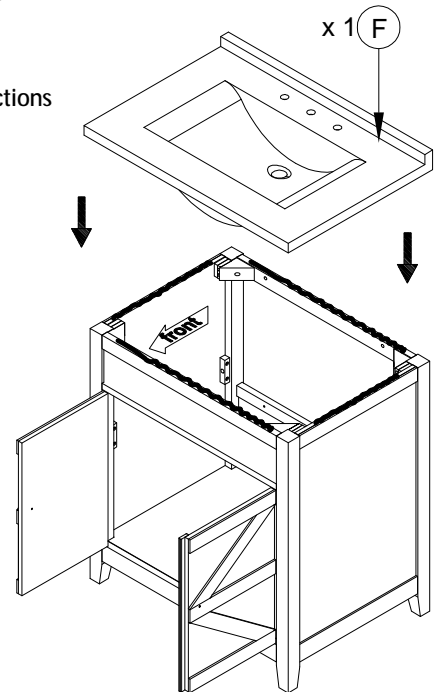
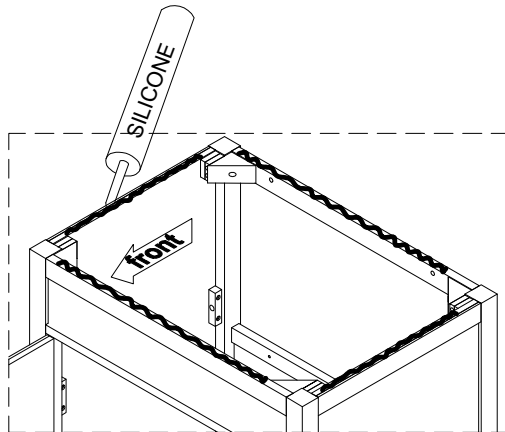


ASSEMBLY INSTRUCTION

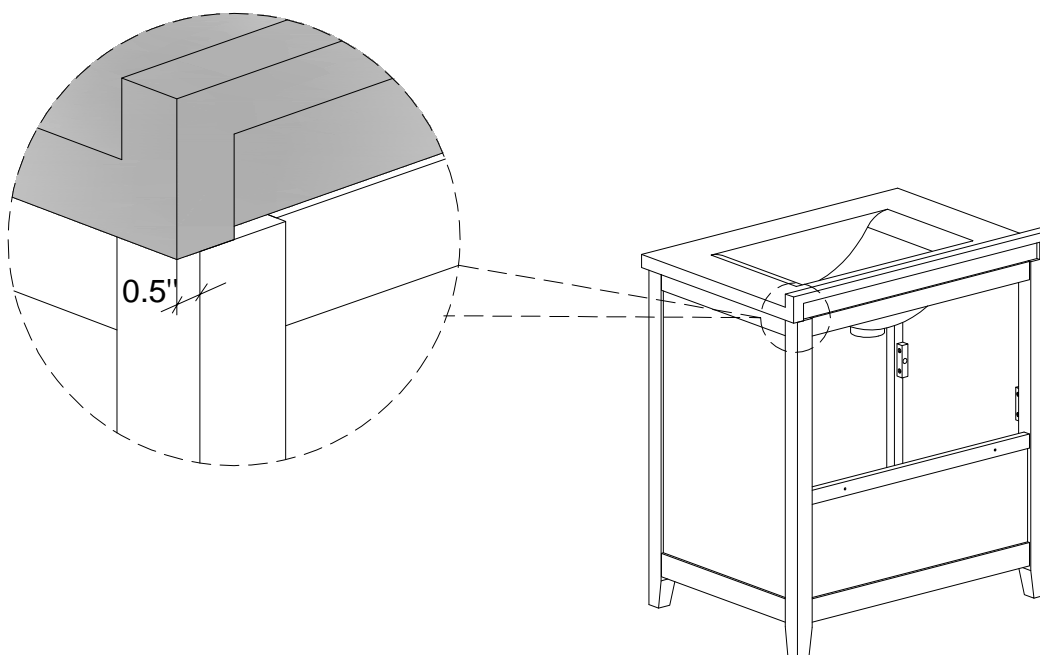
12 495 - VANITY

Step 7

- Set the vanity on top of the vanity base, checking the location of the p-trap and drain.
- Remove the top and install the faucet per manufacturer's installation instructions.
- Hand tighten the pop-up drain with a wrench. Be careful not to over-tighten the pop-up drain, over tightening may cause cracks on the marble top.
- Apply a thin bead of silicone compound around the vanity base and set the vanity top carefully in place. Remove any excess silicone compound with a wet rag.
- Install the faucet water lines and P-trap according to manufacturer's installation instructions



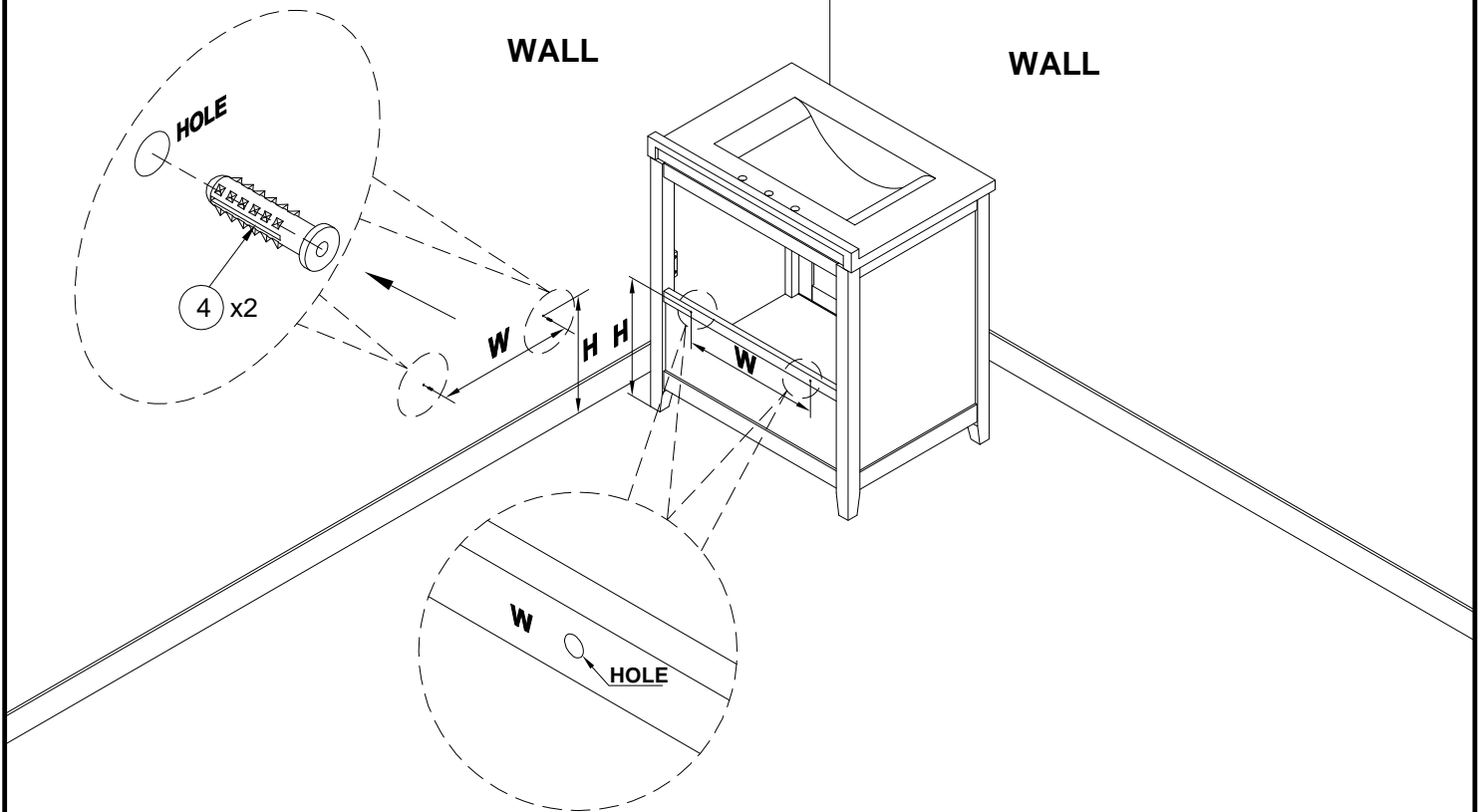
Step 8



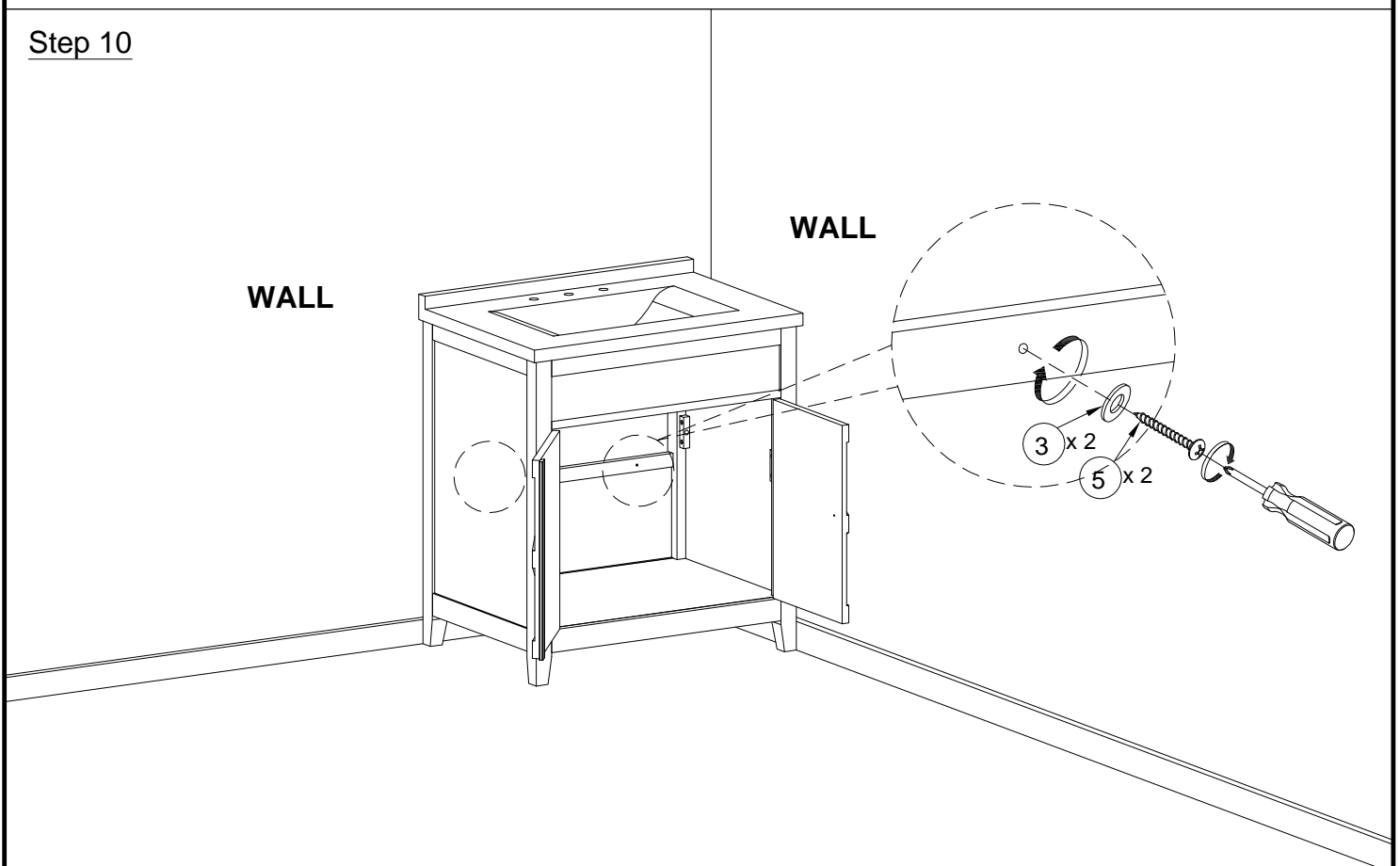
ASSEMBLY INSTRUCTION

12 495 - VANITY

Step 9



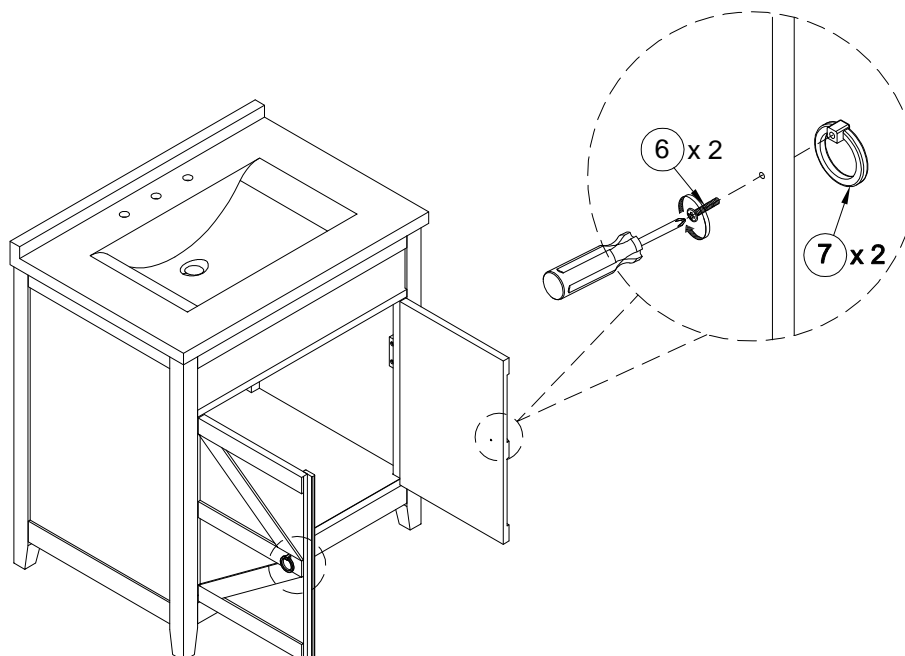
Step 10



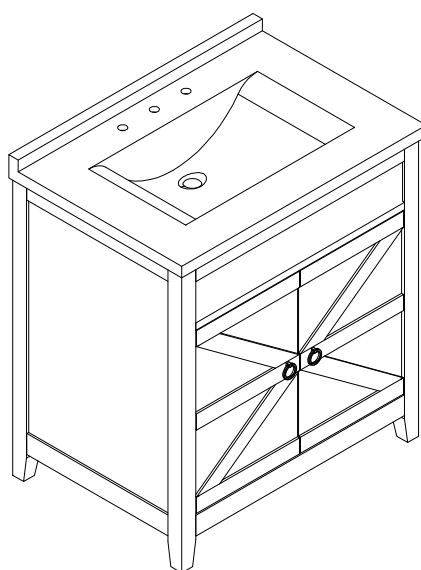
ASSEMBLY INSTRUCTION

12 495 - VANITY

Step 11



Step 12



Finish