

# UTTERMOST

## ASSEMBLY INSTRUCTIONS

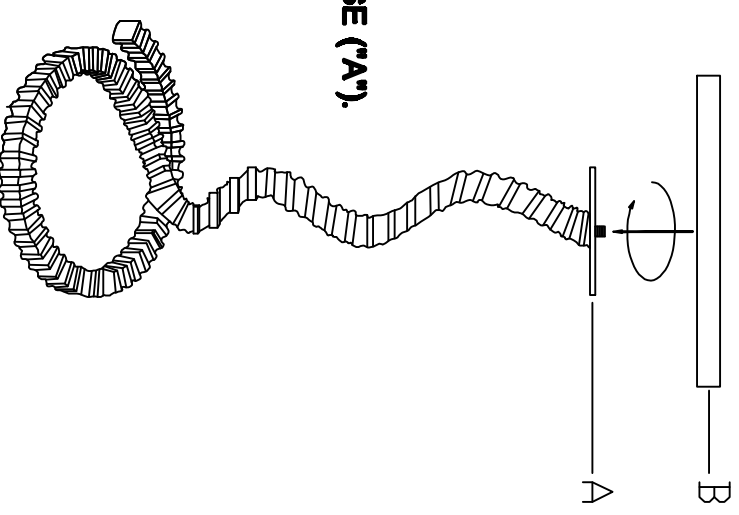
THANK YOU FOR PURCHASING THE TABLE LAMP .  
PLEASE FOLLOW THE INSTRUCTIONS LISTED BELOW:

**ASSEMBLY INSTRUCTIONS:**  
**MODEL NUMBER:25143**

1. UNPACK ALL PARTS FROM CARTON CAREFULLY;
2. THREAD THE WHITE RICE STONE("B") CLOCKWISE TO THE ASSEMBLY BASE ("A").

**IMPORTANT SAFETY INSTRUCTION:**

THIS PORTABLE LAMP HAS A POLARIZED PLUG(ONE BLADE IS WIDER THAN THE OTHER), AS A SAFETY FEATURE TO REDUCE THE RISK OF ELECTRIC SHOCK. THIS PLUG WILL FIT IN A POLARIZED OUTLET ONLY ONE WAY. IF IT DOES NOT FIT, REVERSE THE PLUG. IF IT STILL DOES NOT FIT, CONTACT A QUALIFIED ELECTRICIAN. NEVER USE WITH AN EXTENSION CORD UNLESS PLUG CAN BE FULLY INSERTED. DO NOT ALTER THE PLUG.



PO BOX 558/3325 GRASSY HILL RD. ROCKY MOUNT, VIRGINIA 24151  
[www.utmmost.com](http://www.utmmost.com)