

DO NOT THROW AWAY PACKAGING MATERIALS UNTIL ASSEMBLY IS COMPLETE.

! ASSEMBLE THIS ITEM ON A SOFT SURFACE, SUCH AS CARDBOARD OR CARPET, TO PROTECT FINISH.

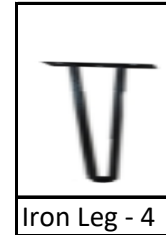
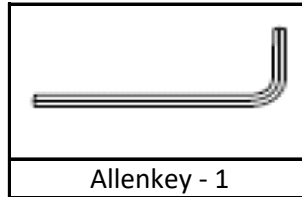
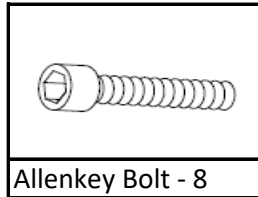
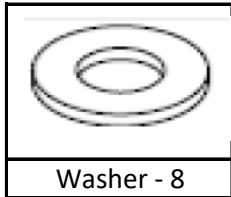
! PROPER ASSEMBLY OF THIS ITEM REQUIRES 2 PEOPLE & REQUIRE APPROX 15 MINUTES TO ASSEMBLE.

CARE INSTRUCTIONS

WIPE WITH A SOFT, DRY CLOTH. TO PROTECT FINISH, AVOID USE OF CHEMICALS & HOUSEHOLD CLEANERS. ANY LIQUID SPILLED ONTO THE SIDE BOARD SHOULD BE CLEANED UP IMMEDIATELY WITH A DAMP CLOTH.

THANK YOU FOR PURCHASING THIS QUALITY PRODUCT. BE SURE TO CHECK ALL PACKING MATERIAL CAREFULLY FOR SMALL PARTS, WHICH MAY HAVE COME LOOSE INSIDE THE CARTON DURING SHIPMENT. IDENTIFY AND COUNT ALL PARTS AND COMPARE WITH THE HARDWARE AND PARTS LIST BELOW

HARDWARE DESCRIPTION



HOW TO ASSEMBLE

STEP 1 : TO ATTACH THE LEGS TO BEDSIDE, PLACE THE BEDSIDE UPSIDE DOWN ON A RUG OR CARPET.

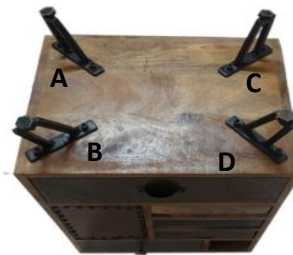
STEP 2 : MATCH THE MARKING OF LEGS AND INVERTED TOP WITH A-A,B-B,C-C,D-D.

STEP 3 : INSERT 1 WASHER & BOLT, TIGHTEN WITH THE HELP OF ALLEN KEY AT EACH SIDE

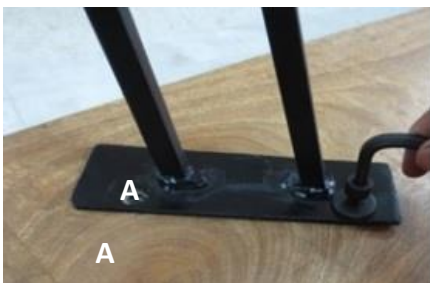
STEP 4 : TURN THE BEDSIDE UPRIGHT. NOW BEDSIDE IS READY TO USE



STEP 1



STEP 2



STEP 3



STEP 4 : FINAL IMAGE