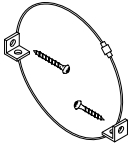



Assembly Instructions

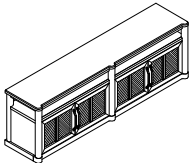

BFGP 338-066

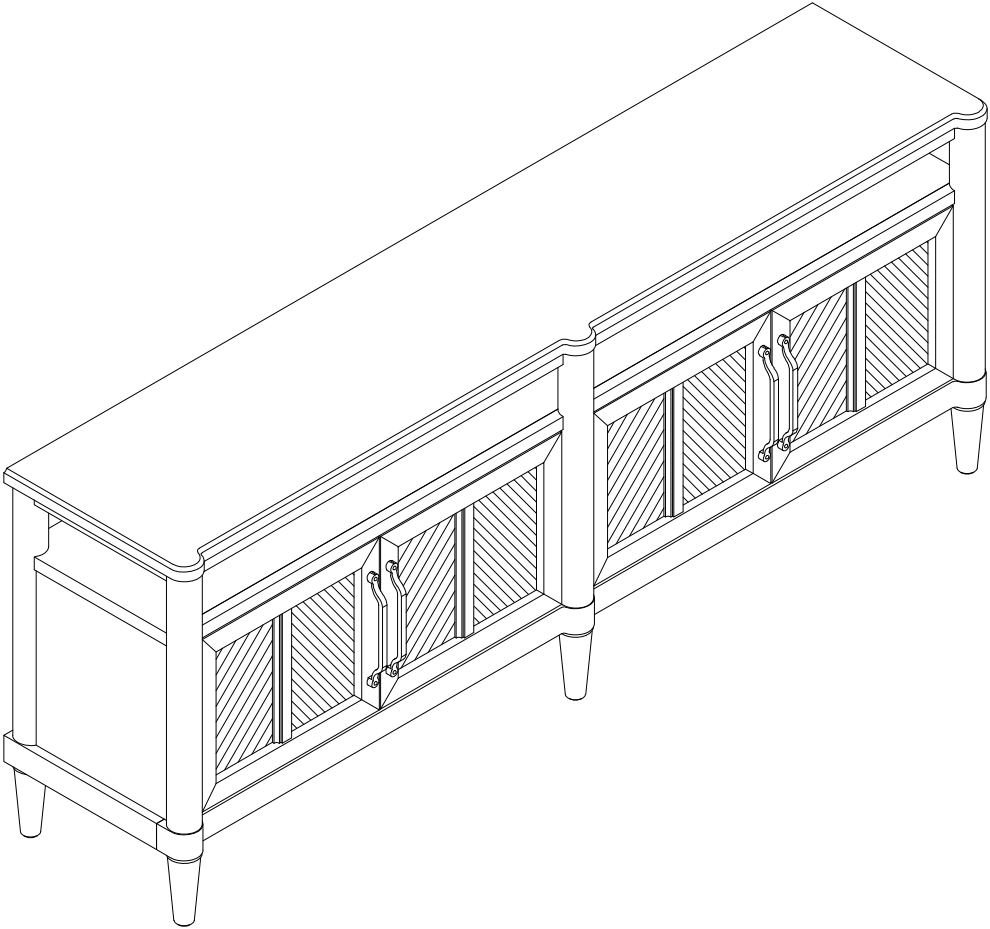
72"CONSOLE

SKU# 24033805

STEP	CODE	HARDWARE		Q'TY
3	A		Furniture Tipping Restraint (Customer to Assemble)	1 SET
			Screwdriver (Not provided)	1 PC

PART LISTS


1. Body Cabinet - 1 PC

2. Legs - 6 PCS



This product is manufactured by BFGP for

ROOMS TO GO ►

MADE IN VIETNAM

VERSIONS# 1 - 10/01/2024

1 OF 2

Assembly Instructions

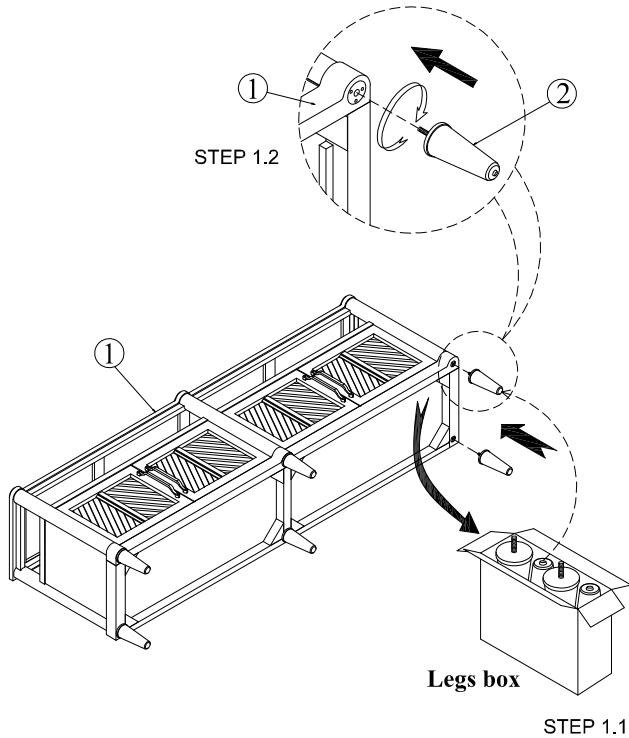
BFGP 338-066

72"CONSOLE

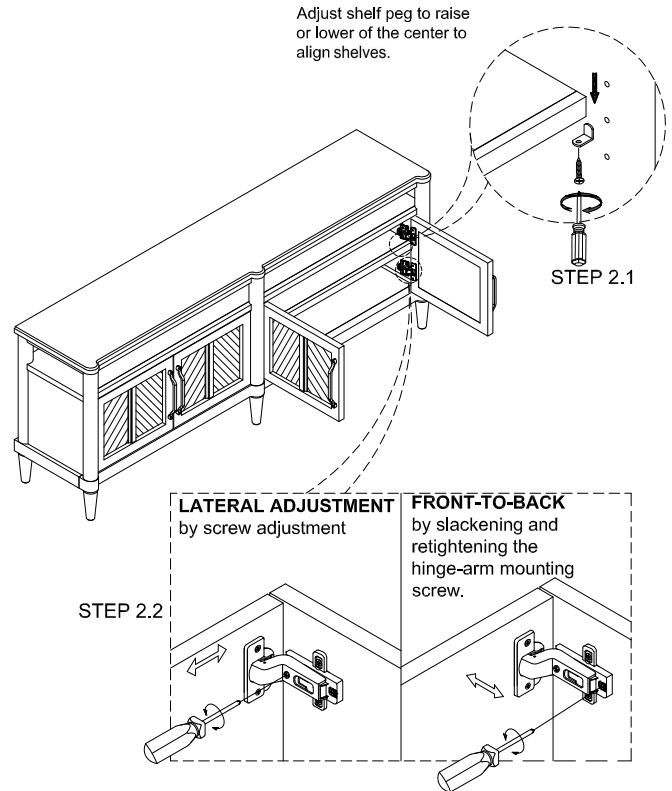
SKU# 24033805

***Caution: Please read all instructions carefully before starting the assembly process. These parts are cumbersome and heavy. Therefore, two people are recommended in order to prevent personal injury and ensure the parts are not damage during the assembly.

STEP 1: Legs are in the Bottom. Remove Legs (2) from inner box.



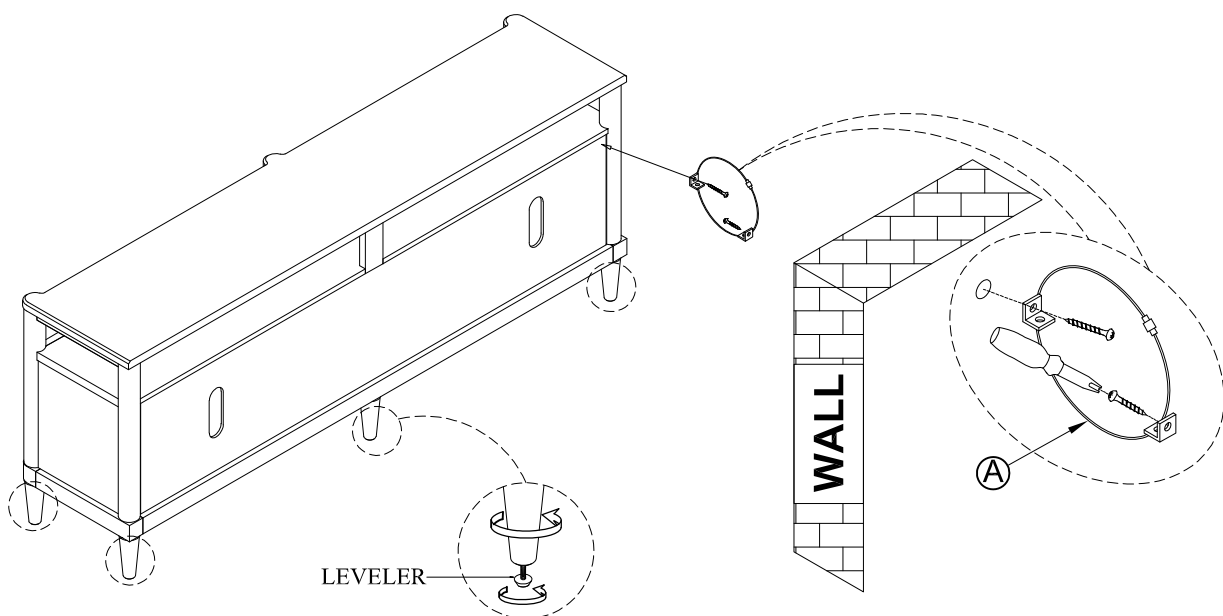
STEP 2: Turn TV Console to the upright position.



STEP 3: Move the TV Console into final position and use tipping restraint attach to wall. Insert the screw (A) by using the screwdriver

*Not included

Notes: Anti-tip hardware customer assembly required.



This product is manufactured by BFGP for

ROOMS TO GO

MADE IN VIETNAM

VERSIONS# 1 - 10/01/2024

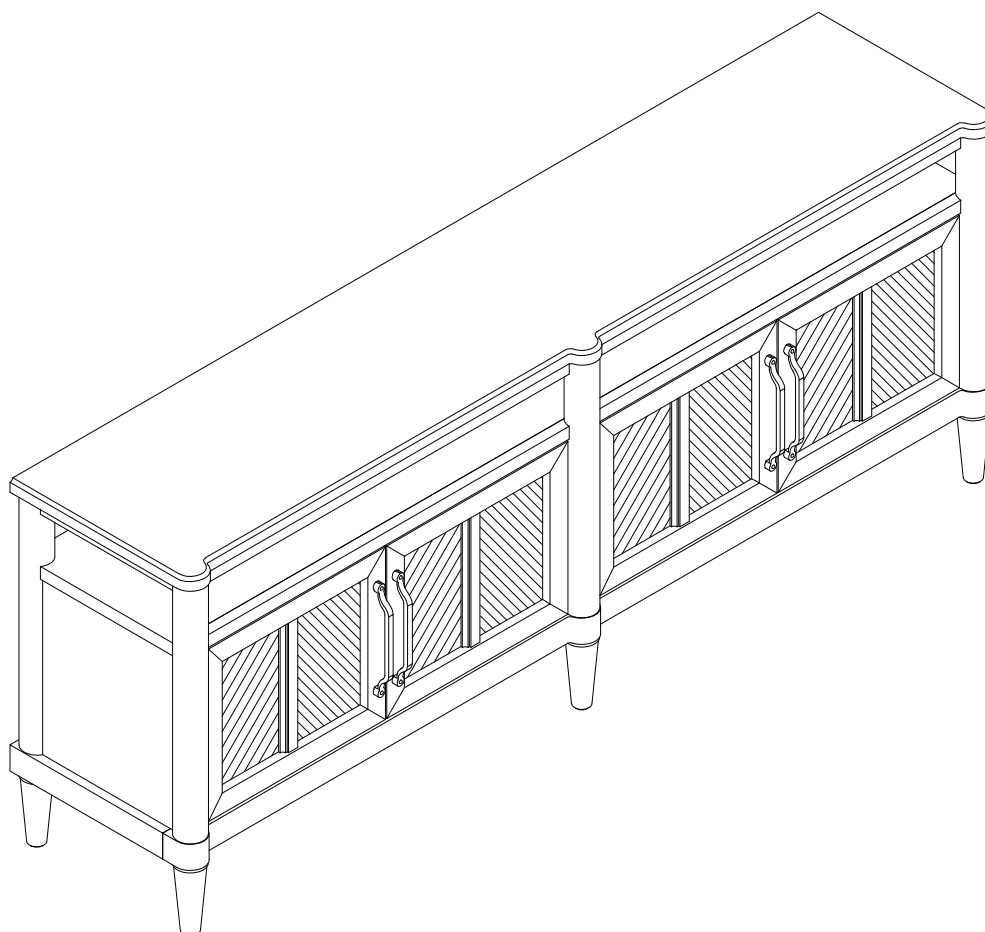
2 OF 2

USE AND CARE INSTRUCTIONS

BFGP 338-066

72"CONSOLE

SKU# 24033805



⚠ WARNING - Death or serious injury may occur when children climb on audio and/or video equipment furniture. A remote control or toys placed on the furnishing may encourage a child to climb on the furnishing and as a result the furnishing may tip over on to the child."

⚠ WARNING - Relocating audio and/or video equipment to furniture not specifically designed to support audio and/or video equipment may result in death or serious injury due to the furnishing collapsing or over turning onto the child."

Manufactured by Home Voyage Incorporation
Viet Nam

Address: Lot 23, Road 2, Tam Phuoc Industrial Zone,
Tam Phuoc Ward, Bien Hoa City, Dong Nai Province,
Viet Nam

⚠ WARNING - For use with televisions weighing 60lbs/ 27.2 kg or less. Use with heavier televisions may result in instability causing tip over resulting in death or serious injury Plasma/LCD-flat panel TV screen of various screen size to a maximum TV screen size 82 inches.

Each shelf should not be loaded more than 25lbs/ 11.3 kg each.

DO NOT EXCEED RECOMMENDED LOAD. Use with products heavier than the maximum sizes and weights indicated may result in instability causing possible injury.

Do not allow children under 16 years to move unit.

Always place TV no more than two inches from the back edge of the console. Placing TV more than two inches from the back edge may increase the risk that the console will tip over

DO NOT REMOVE THIS LABEL

MADE IN VIETNAM