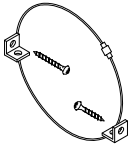

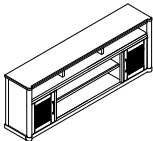

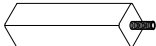


Assembly Instructions

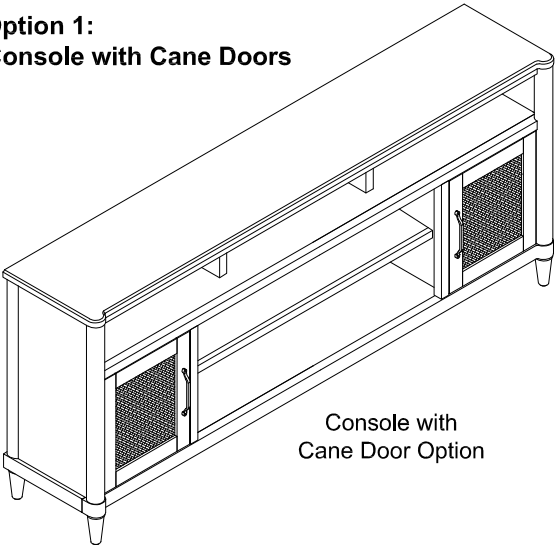
BFGP 338-063 80" CONSOLE WITH FIREPLACE OPTION 3-REVERSIBLE, SKU# 24133807
CANE ON ONE SIDE AND VENEER ON THE OTHER

STEP	CODE	HARDWARE		Q'TY
3	A		Furniture Tipping Restraint (Customer to Assemble)	1 SET
			Screwdriver (Not provided)	1 PC

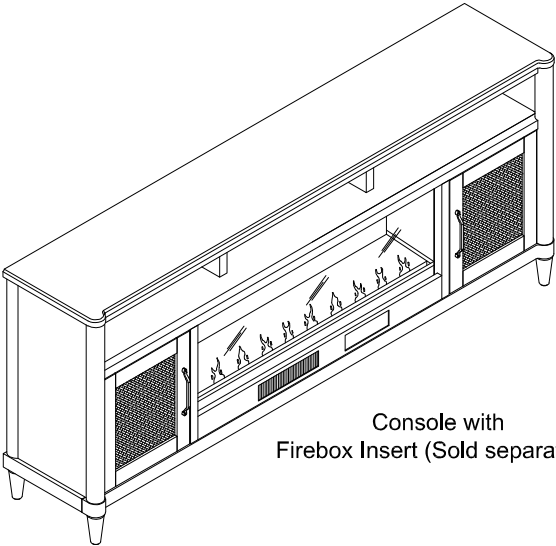
PART LISTS


1. Body Cabinet - 1 PC

2. Legs - 4 PCS

3. Support Leg - 1 PC

Option 1: Console with Cane Doors

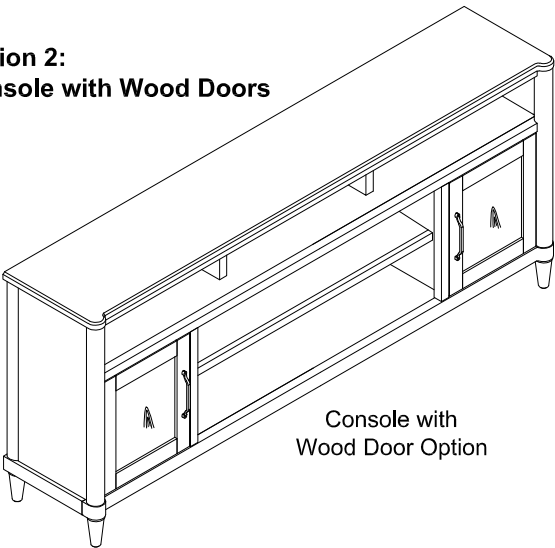


Console with
Cane Door Option

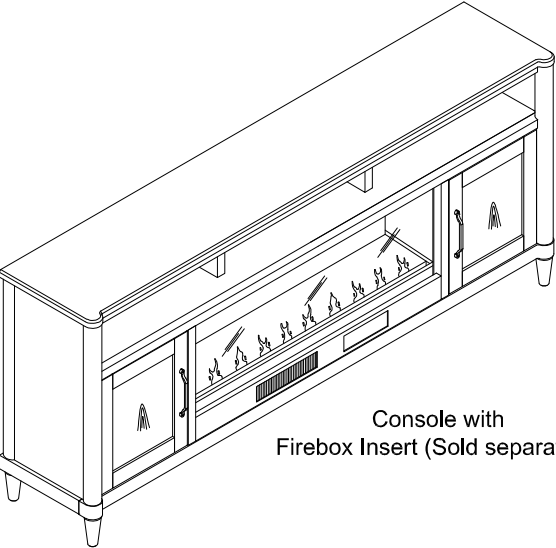


Console with
Firebox Insert (Sold separately)

Option 2: Console with Wood Doors



Console with
Wood Door Option



Console with
Firebox Insert (Sold separately)

This product is manufactured by BFGP for

ROOMS TO GO ►

MADE IN VIETNAM

VERSIONS# 1 - 10/01/2024

1 OF 3

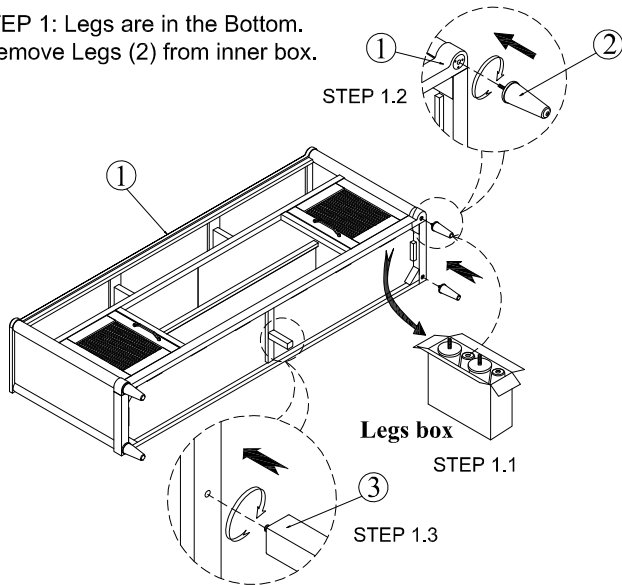
Assembly Instructions

**BFGP 338-063 80" CONSOLE WITH FIREPLACE OPTION 3-REVERSIBLE,
CANE ON ONE SIDE AND VENEER ON THE OTHER**

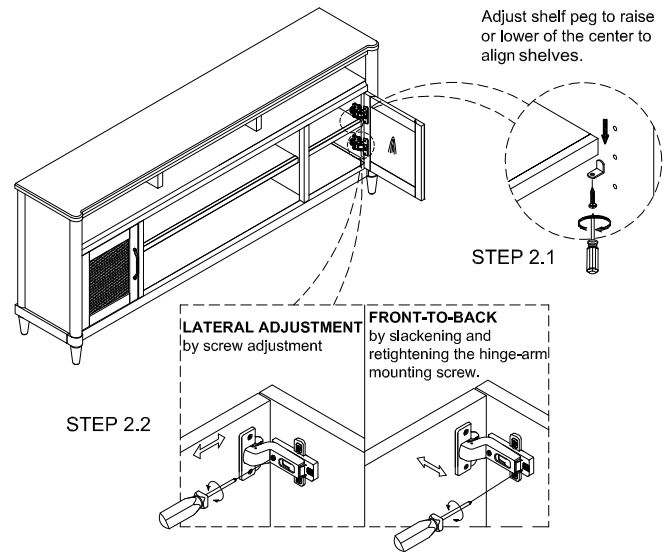
SKU# 24133807

***Caution: Please read all instructions carefully before starting the assembly process. These parts are cumbersome and heavy. Therefore, two people are recommended in order to prevent personal injury and ensure the parts are not damage during the assembly.

**STEP 1: Legs are in the Bottom.
Remove Legs (2) from inner box.**



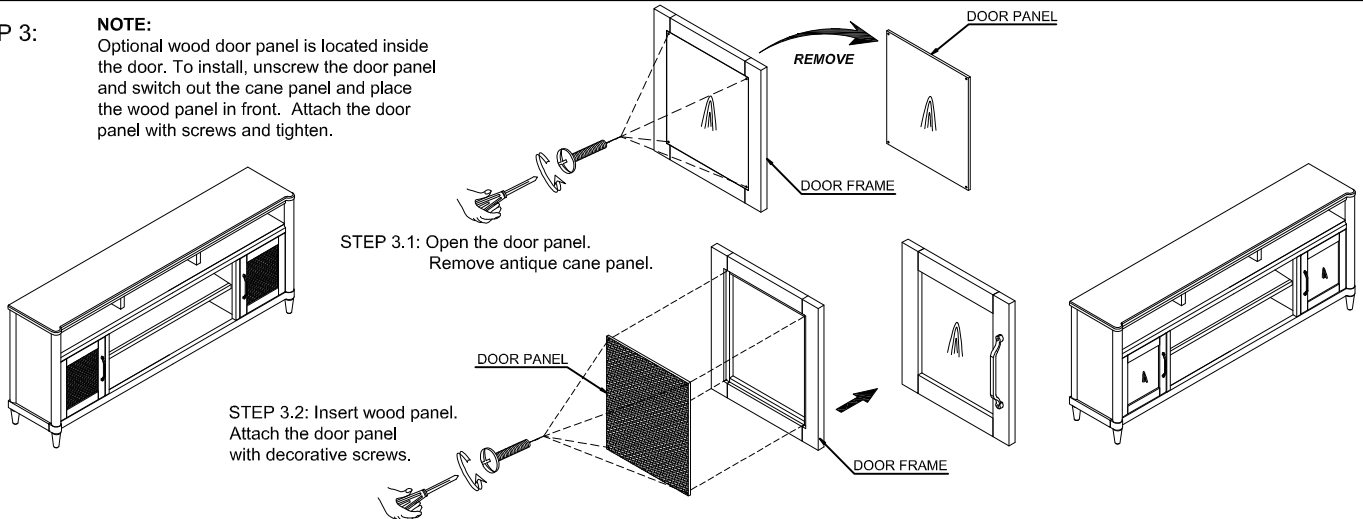
STEP 2: Turn TV Console to the upright position.



STEP 3:

NOTE:

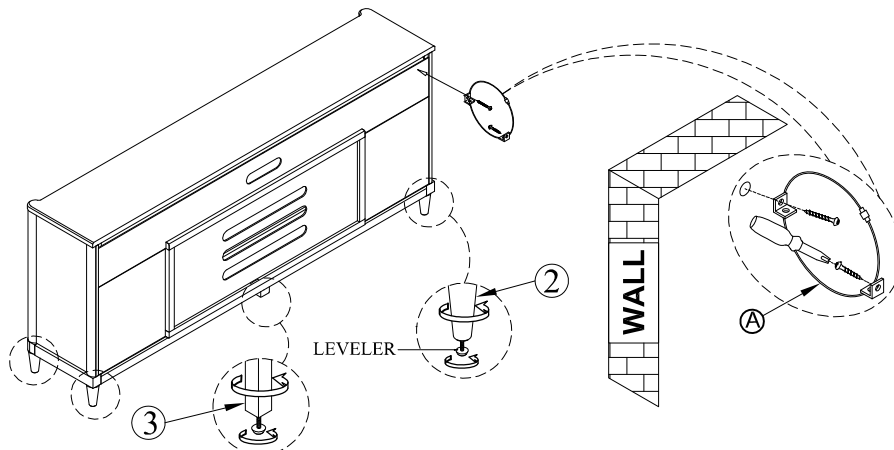
Optional wood door panel is located inside the door. To install, unscrew the door panel and switch out the cane panel and place the wood panel in front. Attach the door panel with screws and tighten.



STEP 4: Move the TV Console into final position and use tipping restraint attach to wall. Insert the screw (A) by using the screwdriver

***Not included**

Notes: Anti-tip hardware customer assembly required.



This product is manufactured by BFGP for

ROOMS TO GO ►

MADE IN VIETNAM

VERSIONS# 1 - 10/01/2024

2 OF 3

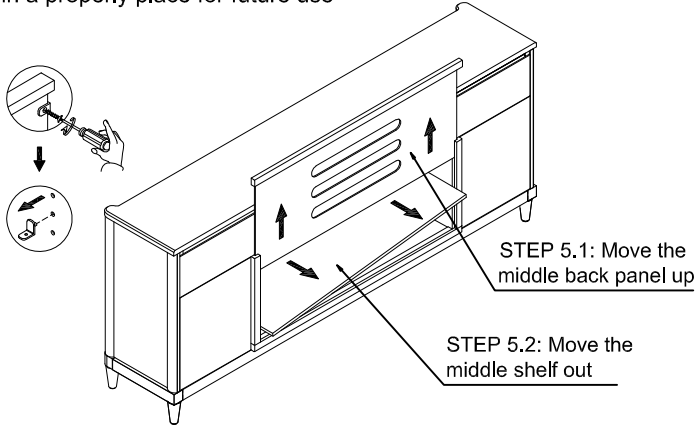
Assembly Instructions

**BFGP 338-063 80" CONSOLE WITH FIREPLACE OPTION 3-REVERSIBLE,
CANE ON ONE SIDE AND VENEER ON THE OTHER**

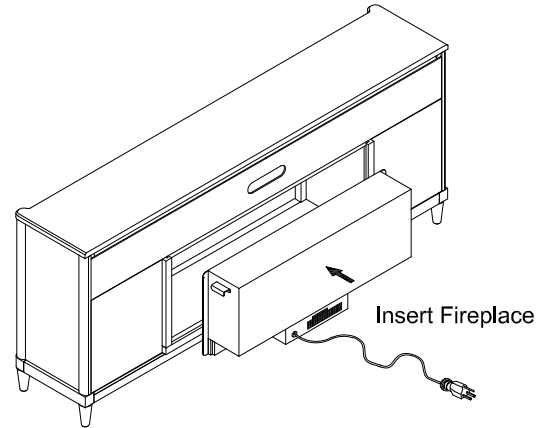
SKU# 24133807

***Caution: Please read all instructions carefully before starting the assembly process. These parts are cumbersome and heavy. Therefore, two people are recommended in order to prevent personal injury and ensure the parts are not damage during the assembly.

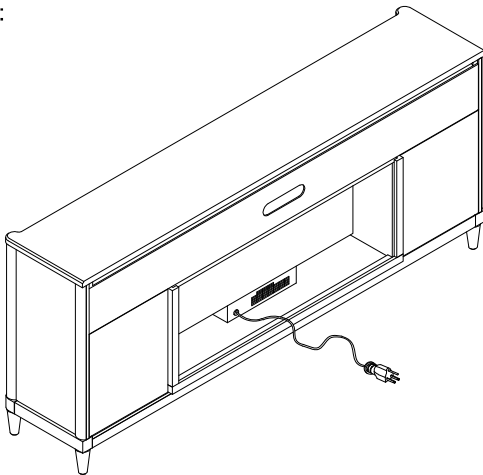
Follow the below steps for the use with Firebox (sold separately)
STEP 5: Remove the middle back panel and the middle shelf by unscrewing the fasteners and shelf supports. Keep the middle shelf in a properly place for future use



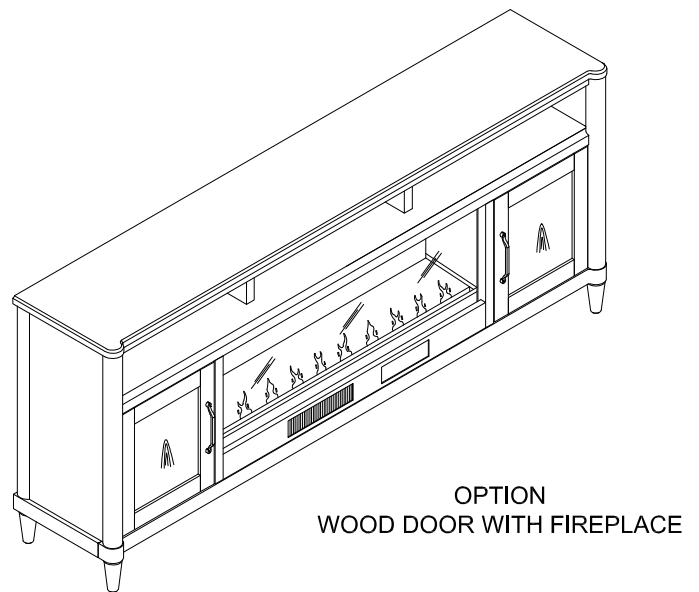
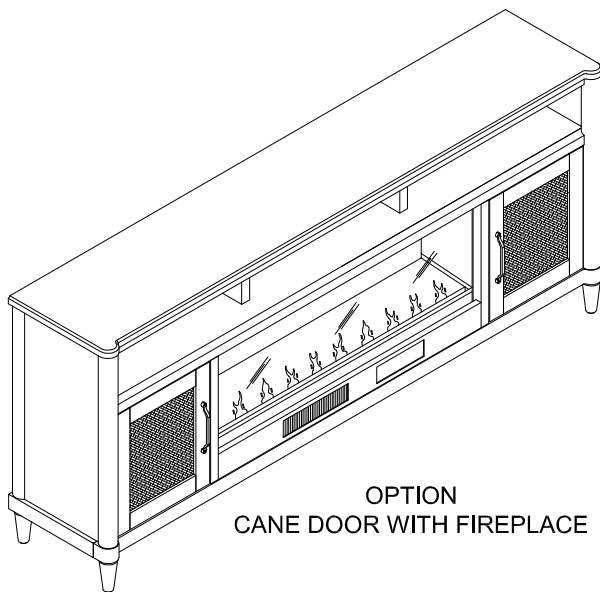
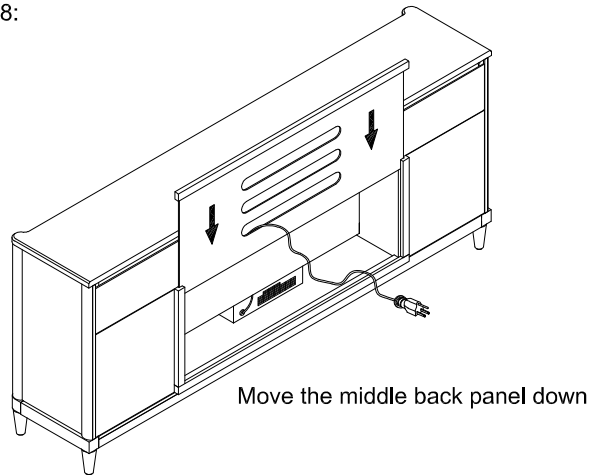
STEP 6: Insert the Fireplace carefully and slide it into the opening
NOTE: Firebox installed from the back



STEP 7:



STEP 8:



This product is manufactured by BFGP for

ROOMS TO GO

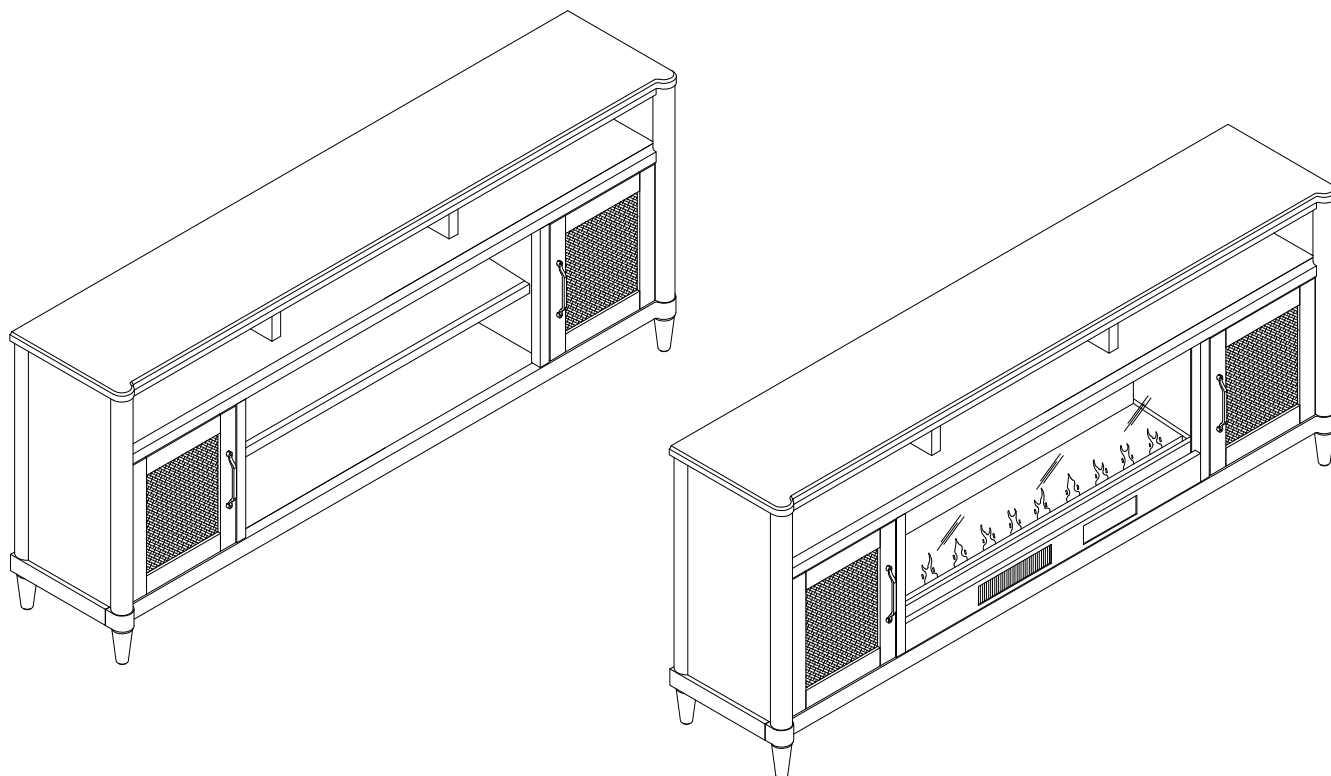
MADE IN VIETNAM

VERSIONS# 1 - 10/01/2024

3 OF 3

USE AND CARE INSTRUCTIONS

BFGP 338-063 80" CONSOLE WITH FIREPLACE OPTION 3-REVERSIBLE, SKU# 24133807
CANE ON ONE SIDE AND VENEER ON THE OTHER



⚠ WARNING - Death or serious injury may occur when children climb on audio and/or video equipment furniture. A remote control or toys placed on the furnishing may encourage a child to climb on the furnishing and as a result the furnishing may tip over on to the child."

⚠ WARNING - Relocating audio and/or video equipment to furniture not specifically designed to support audio and/or video equipment may result in death or serious injury due to the furnishing collapsing or over turning onto the child."

Manufactured by Home Voyage Incorporation
Viet Nam

Address: Lot 23, Road 2, Tam Phuoc Industrial Zone,
Tam Phuoc Ward, Bien Hoa City, Dong Nai Province,
Viet Nam

⚠ WARNING - For use with televisions weighing 125lbs/ 56.7 kg or less. Use with heavier televisions may result in instability causing tip over resulting in death or serious injury Plasma/LCD-flat panel TV screen of various screen size to a maximum TV screen size 82 inches.

Each shelf should not be loaded more than 25lbs/ 11.3 kg each.

DO NOT EXCEED RECOMMENDED LOAD. Use with products heavier than the maximum sizes and weights indicated may result in instability causing possible injury.

Do not allow children under 16 years to move unit.

Always place TV no more than two inches from the back edge of the console. Placing TV more than two inches from the back edge may increase the risk that the console will tip over

DO NOT REMOVE THIS LABEL

MADE IN VIETNAM