



ASSEMBLY INSTRUCTION


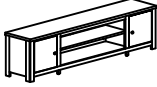
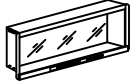

DVDR 4219-482 82" CONSOLE (SKU# 24142197)

DVDR 4223-482 82" CONSOLE (SKU# 24142236)

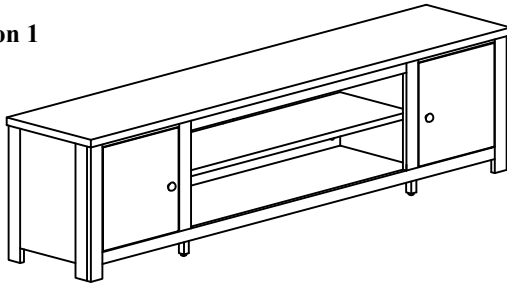
DVDR 4225-482 82" CONSOLE (SKU# 24142250)

Manufactured by (DVDR) for **ROOMS TO GO**

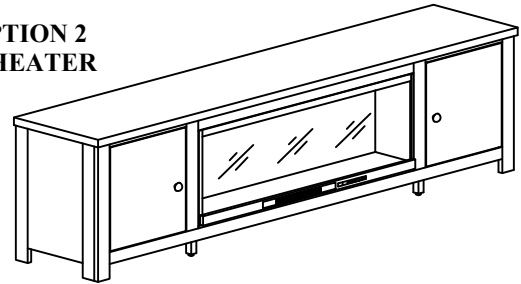
Thank you for purchasing this quality product. Be sure to check all packing material carefully for small parts, which may have come loose inside the carton during shipment. Identify and count all parts and compare with the parts list below:

Hardware List	No.	Picture	Description	Dimension	Qty
	①		Phillips Screwdriver	-	Not Provided
Part List	No.	Picture	Description	Qty	
	A		Console	1 Pc	
	B		Heater (No Included)	1 Pc	
	C		Tipping Restraint (Packed on the back panel)	1 Pc	

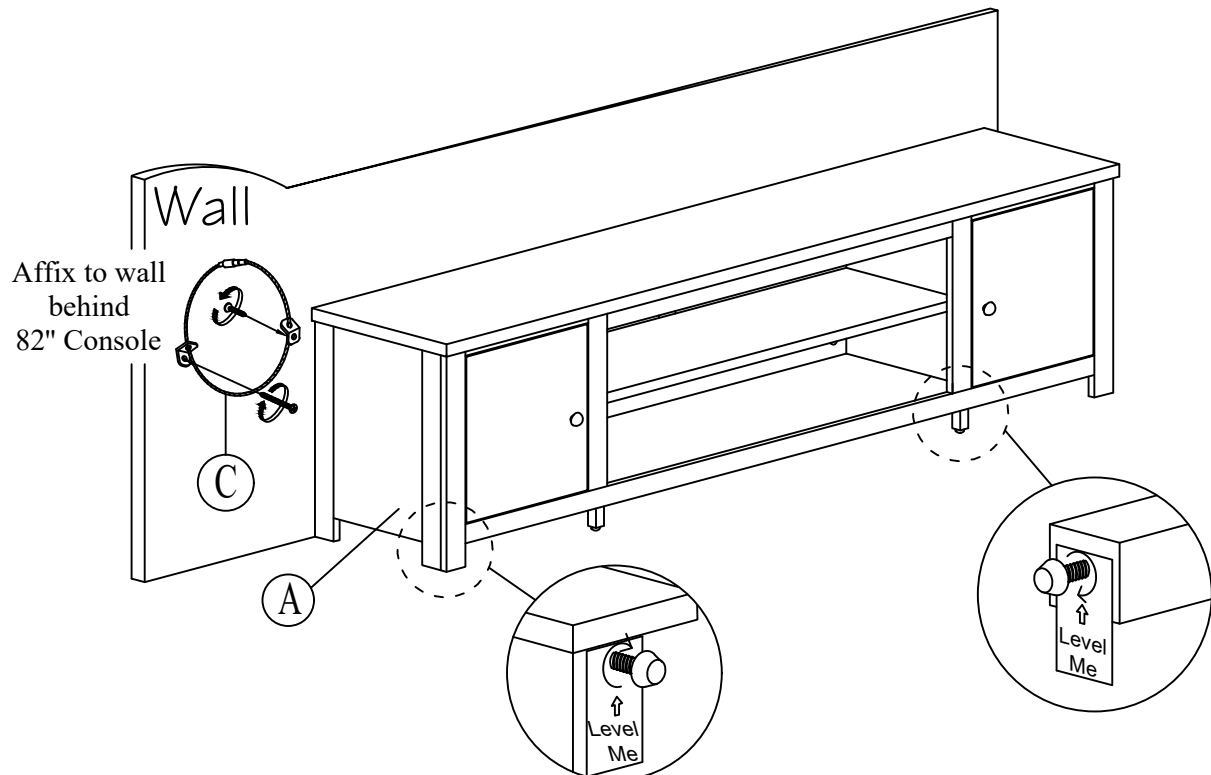
Option 1



OPTION 2
+ HEATER



Option 1



82" Console SKU # 24142197

82" Console SKU # 24142236

82" Console SKU # 24142250

Version #1-2024/12/16



Manufactured by (DVDR) for **ROOMS TO GO**

ASSEMBLY INSTRUCTION

DVDR 4219-482 82" CONSOLE (SKU# 24142197)

DVDR 4223-482 82" CONSOLE (SKU# 24142236)

DVDR 4225-482 82" CONSOLE (SKU# 24142250)

ASSEMBLY TIPS:

1. Remove hardware from box and sort by size.
2. Please check to see that all hardware and parts are present prior start of assembly.
3. Please follow attached instructions in the same sequence as numbered to assure fast and easy assembly.

⚠ WARNING!

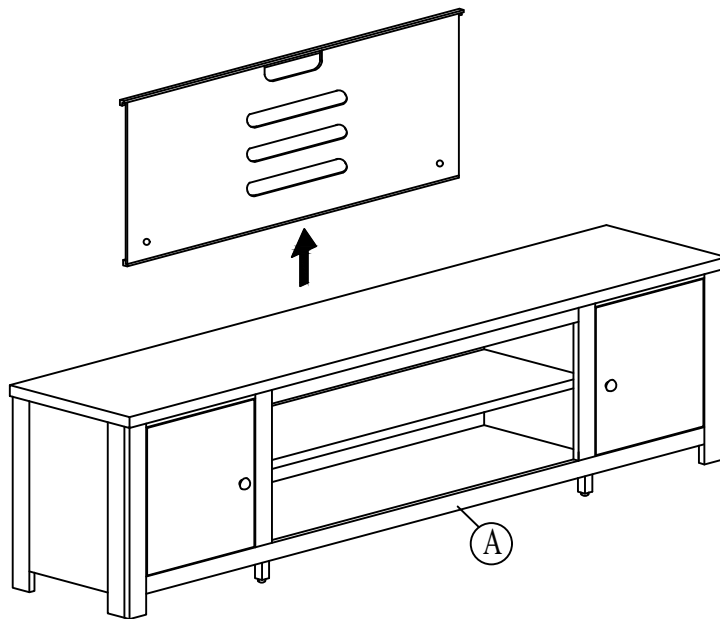
1. Don't attempt to repair or modify parts that are broken or defective. Please contact the store immediately.
2. This product is for home use only and not intended for commercial establishments.

Option 2

Assembly Step

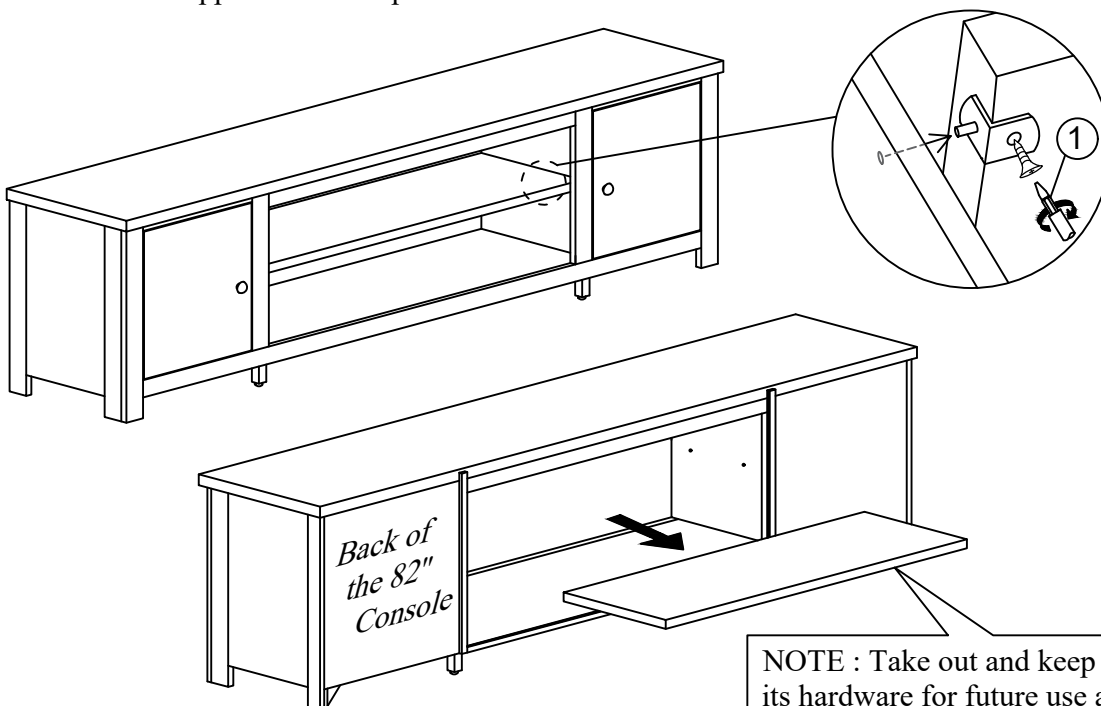
STEP 1

Take up the back panel.



STEP 2

Remove the shelf support and shelf panel.



NOTE : Take out and keep the shelf and its hardware for future use as needed.



Manufactured by (DVDR) for **ROOMS TO GO**

ASSEMBLY INSTRUCTION

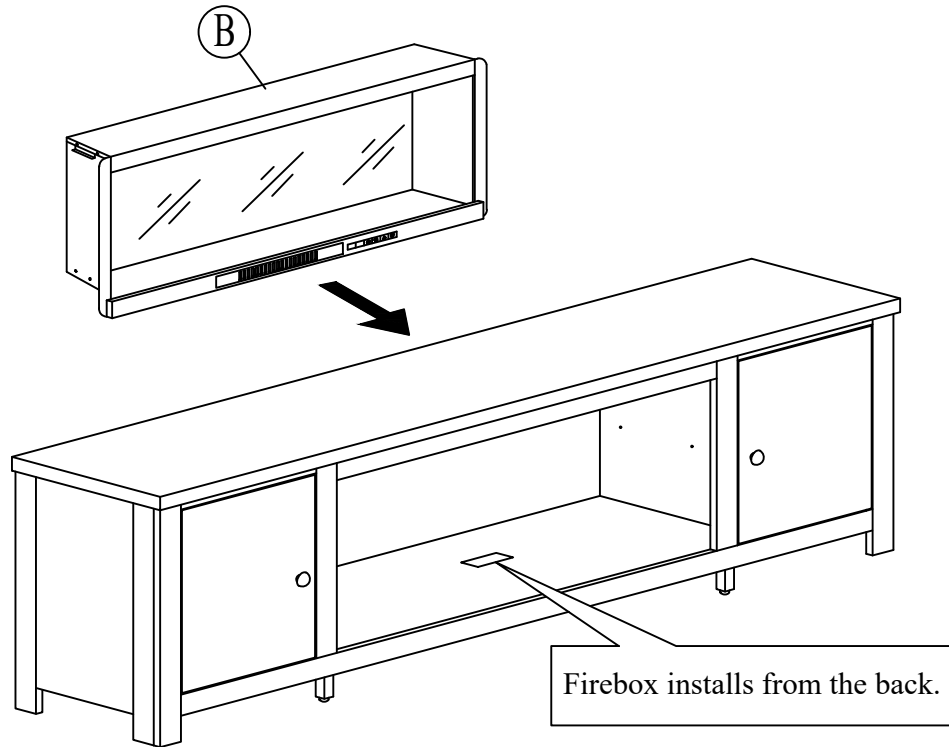
DVDR 4219-482 82" CONSOLE (SKU# 24142197)

DVDR 4223-482 82" CONSOLE (SKU# 24142236)

DVDR 4225-482 82" CONSOLE (SKU# 24142250)

STEP 3

Insert the fireplace.



STEP 4

Push down the back panel.

