

ASSEMBLY INSTRUCTIONS

INFD 1111

62" CONSOLE.

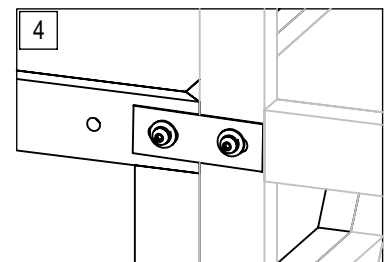
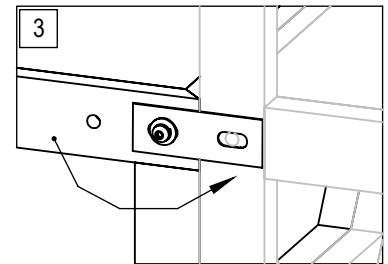
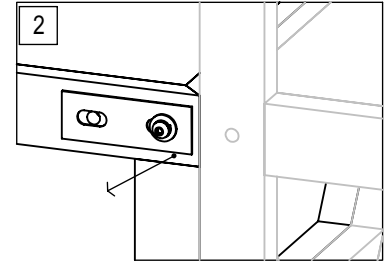
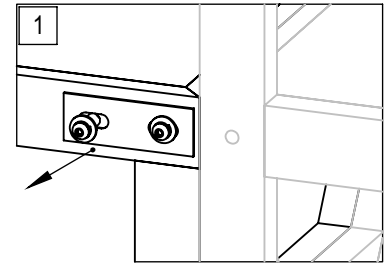
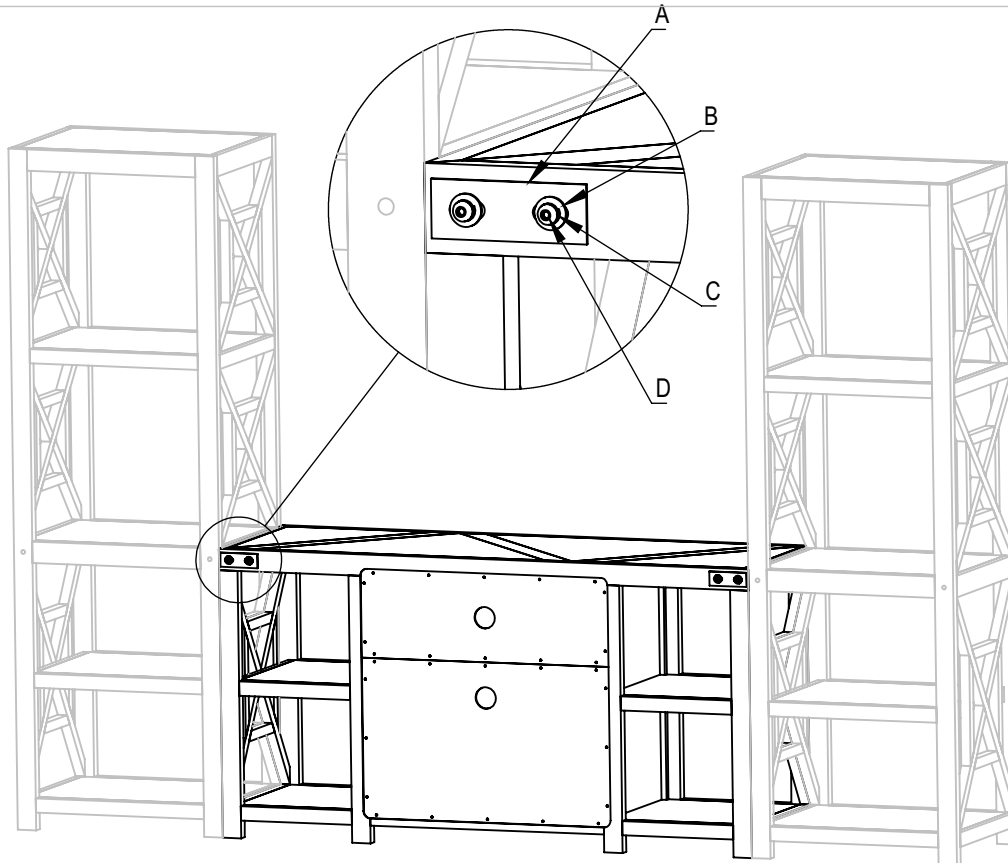
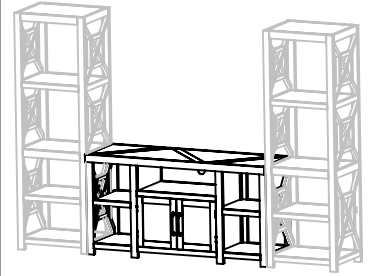
SKU: 24001113, 24001125, 24001137, 24201117, 24201129, 24201131.



Manufactured by INFD for Rooms To Go.

Version 1.1.

06/2025



ID	DESCRIPTION	IMAGE	QTY	SKU
A	METAL PLATE		2	1111PLA-PC
B	WASHER 5/16"		4	1ROND009
C	LOCK WASHER 5/16"		4	1ROND004
D	SOCKET BUTTON HEAD BOLT 5/16 x 1" (17 THREADS)		4	1TORN091
E	ALLEN KEY 3/16"		1	1LLAV001

INSTRUCTIONS

1. REMOVE THE INNER SCREW.
2. LOOSE THE EXTERIOR SCREW, BUT DON'T TAKE IT OUT.
3. TURN THE METAL PLATE UNTIL THE HOLE MATCHES THE HOLE IN THE BOOKCASE.
4. SCREW THE SCREW IN THE BOOKCASE AND TIGHT THE SCREW AT THE STAND.

ANTI-TIP HARDWARE MUST BE INSTALLED BY CUSTOMER.