

Assembly Instructions

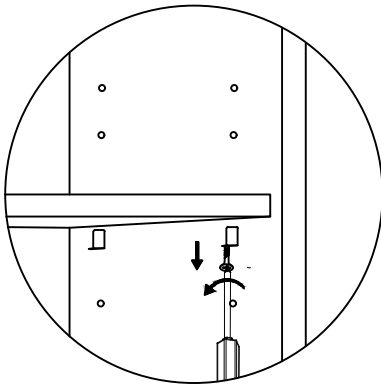
400-025 Universal Console Cube
400-025 Universal Console Cube

SKU 24340010
SKU 24340022

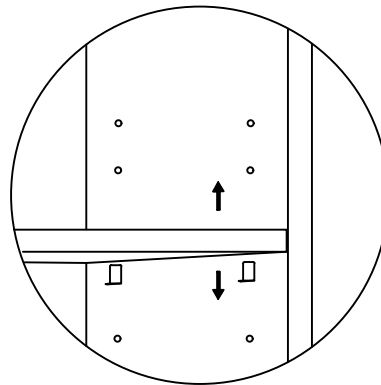
This product is manufactured by HLLC for

ROOMS TO GO ►

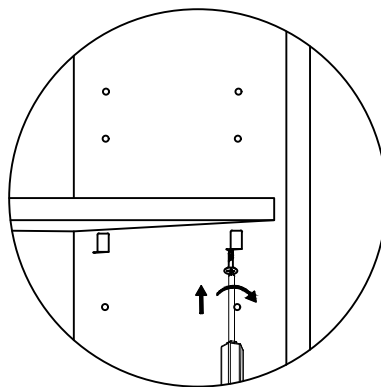
STEP 1



STEP 2



STEP 3



NOTE: SCREWDRIVER NOT INCLUDED

VERSION 01 CREATED 12/2024

Assembly Instructions

400-025 Universal Console Cube
400-025 Universal Console Cube

SKU 24340010
SKU 24340022

This product is manufactured by HLLC for

ROOMS TO GO ►

STEP 1. Remove the drawer, unlocking it as shown on fig.1 (left side push up, right side push down)

STEP 2. Take out the plastic bottoms pushing from inside the case as shown on fig. 2

STEP 3. Adjust the cases using the levelers as shown on fig. 3

STEP 4. Install the allen screw and nut using the two allen keys (provided) as shown on fig. 4





QUANTITY	DESCRIPTION	
1	ALLEN SCREW 1/4" X 20 X 1 1/4" + NUT	
2	ALLEN KEY	
1	LOCK WASHERS	
1	WASHERS	

FIG 1.

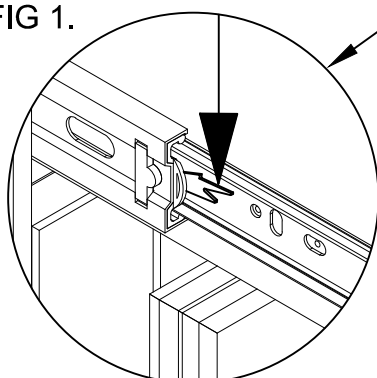


FIG 2.

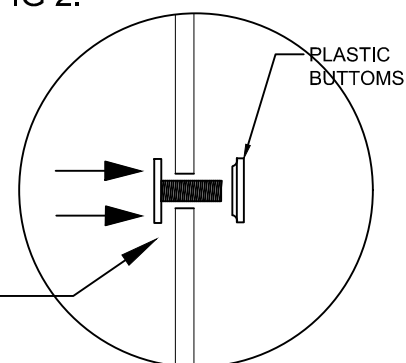
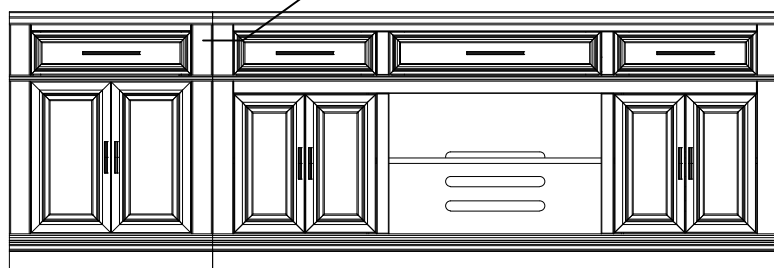
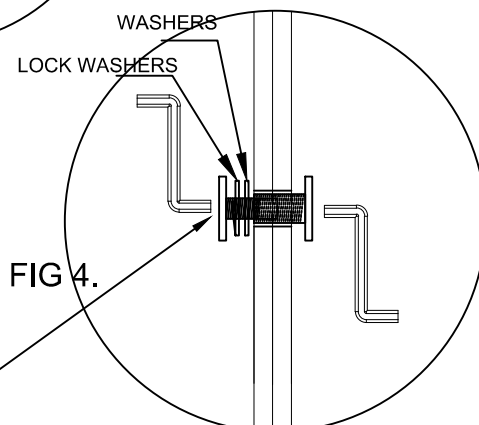
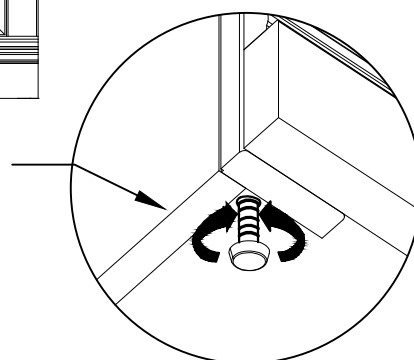


FIG 3.



VERSION 01 CREATED 12/2024

WARNING
INJURY MAY RESULT FROM TIPPING FURNITURE

This restraint is not a substitute for proper adult supervision. This restraint may provide protection against tipping furniture. Do not allow children to climb on furniture. Failure to detach this restraint before moving furniture may result in injury and damage.

THIS BAG IS NOT A TOY

WARNING-TO AVOID DANGER OF SUFFOCATION, KEEP THIS BAG AWAY FROM BABIES AND SMALL CHILDREN. DO NOT USE IN CRIBS, BEDS, CARRIAGES OR PLAY PENS, THIS BAG IS NOT A TOY.
KNOT BAG BEFORE THROWING AWAY.

ADVERTENCIA

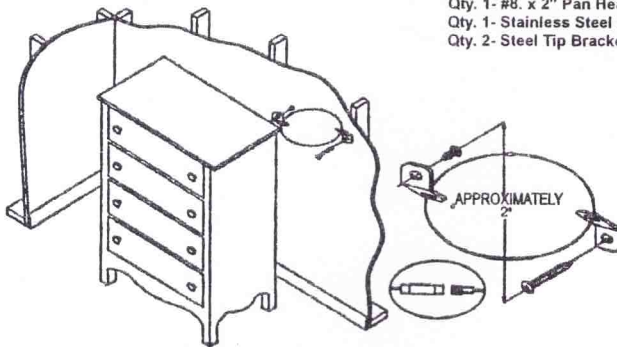
SI UN MUEBLE SE VUELCA PUEDE CAUSAR LESIONES

Este seguro no sustituye la supervisión adecuada de un adulto. Este seguro puede brindar cierta protección para evitar que los muebles se vuelquen. No permita que los niños se suban a los muebles. Si no quita la cinta de sujeción antes de mover los muebles, puede causar daños o lesiones.

ESTA BOLSA NO ES UN JUGUETE.

ADVERTENCIA-PARA EVITAR EL RIESGO DE AHOGO, MANTENGA ESTE BOLSO ALEJADO DE BEBES Y NIÑOS PEQUEÑOS. NO LO UTILICE EN CUNAS, CAMAS, CARROS DE NIÑOS O BOLIGRAFOS DE JUGUETE. ESTE BOLSO NO ES UN JUGUETE.
HAGA UN NUDO EN LA BOLSA ANTES DE TIRARLA A LA BASURA.

-Parts List-
Qty. 1- #8 x 5/8" Pan Head Phil, screw, zinc
Qty. 1- #8. x 2" Pan Head Phil, screw, zinc
Qty. 1- Stainless Steel Braided Cable Tie
Qty. 2- Steel Tip Bracket zinc



Installation Instructions:

This anti-tip device must be attached to a wall stud using the 2" screw enclosed.

1. Attach a bracket securely to the back top rail or back top edge of the furniture using the 5/8" screw provided, through the smaller hole in the bracket.
2. Locate the other bracket on the wall over a stud and 2 inches below the mounting bracket secured to the back of your unit. Attach to the wall stud using the 2" screw provided, through the smaller hole in the bracket.
3. Place the furniture into position so both mounting brackets are vertically in line.
4. Lace the threaded end of the restraint cable through the larger hole in each mounting bracket. Bring both ends together and rotate the thumb nut onto the threaded end until tight.
5. Confirm that the cable is securely laced and locked.

Instrucciones de instalación:

Este dispositivo antivuelco contra volcado debe fijarse a un taco de pared con el tornillo de 2" que se incluye.

1. Coloque un soporte firmemente en la parte superior trasero o en el borde superior trasero del mueble, usando el tornillo de 5/8" que se proporciona y el agujero más pequeño del soporte.
2. Ubique el otro soporte en la pared, sobre un taco y 5 cm (2 pulg.) por debajo del soporte de montaje asegurado en la parte trasera de la unidad. Fije al taco de pared usando el tornillo de 2" que se incluye y el agujero más pequeño del soporte.
3. Coloque el mueble en su sitio, de modo que los dos soportes estén en una línea vertical.
4. Encaje el extremo roscado del cable de restricción a través del agujero más grande en cada soporte de montaje. Una ambos extremos y gire la tuerca en el extremo roscado hasta que quede apretada.
5. Confirme que el cable este seguramente atado y asegurado.

Manufactured by: B. Walter & Co.™

Mailing Address: P.O. Box. 278, Wabash Indiana 46992
120423 HH512-P1

Meets ASTM F3096

DATE:

04/10/25