



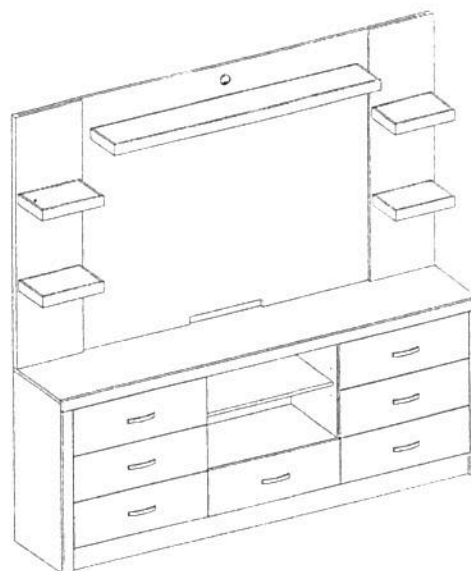
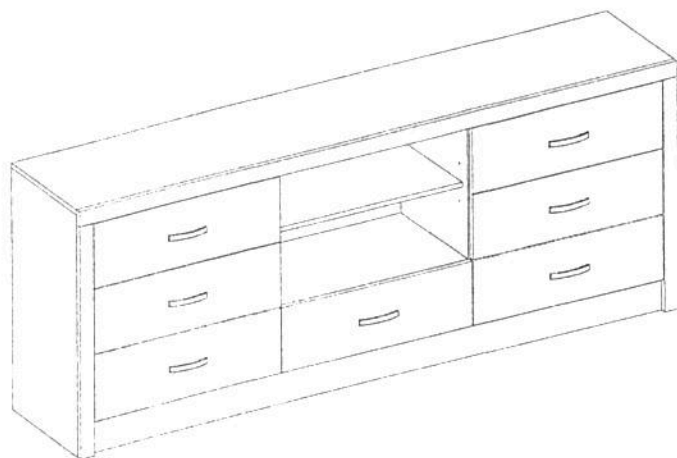


Assembly Instructions

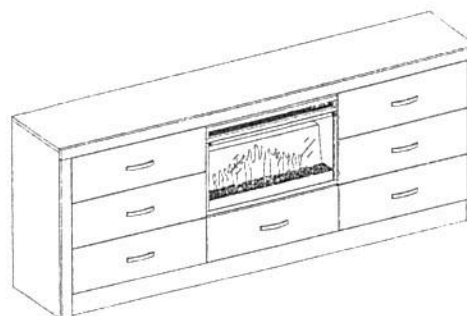
WHLM #MALIBU-CS82 MALIBU 82" TV CONSOLE SKU# 25062542

CODE	PARTS	Q'TY
A	 TV CONSOLE	1

STEP	CODE	HARDWARE	Q'TY
4		TIPPING RESTRAINT HARDWARE KIT	2



Optional configuration
(Back panel sold separately)



Optional configuration
(Fireplace insert sold separately)

Hardware Pack Location(s):

Attached on the back panel of console.

#MALIBU-CS82 MALIBU 82" TV CONSOLE SKU# 25062542

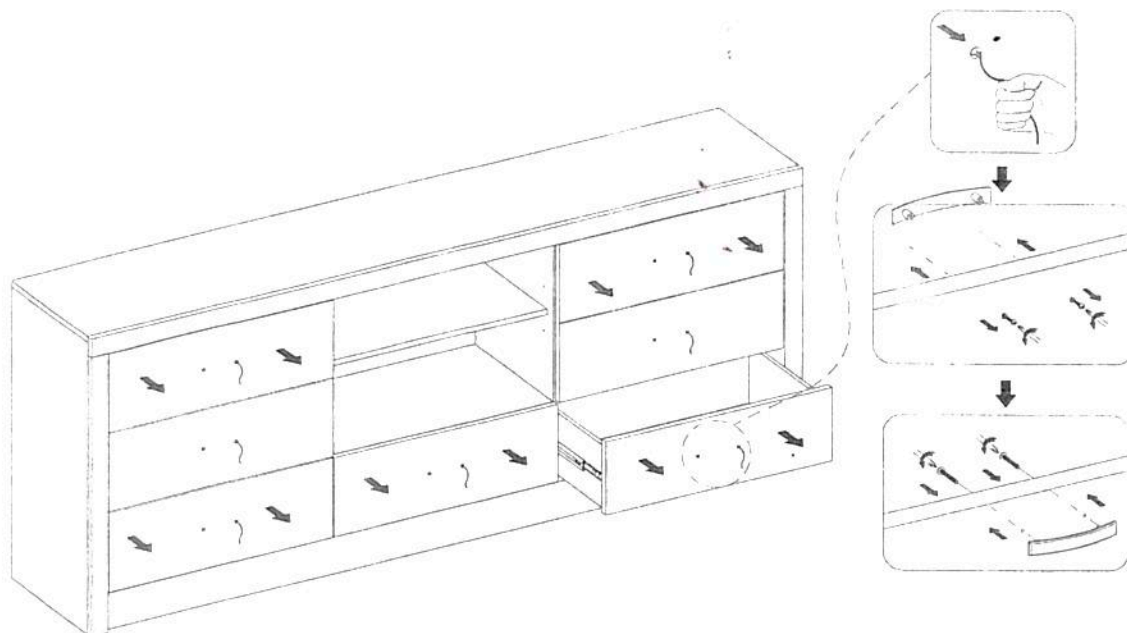


Assembly Instructions

WHLM #MALIBU-CS82 MALIBU 82" TV CONSOLE SKU# 25062542

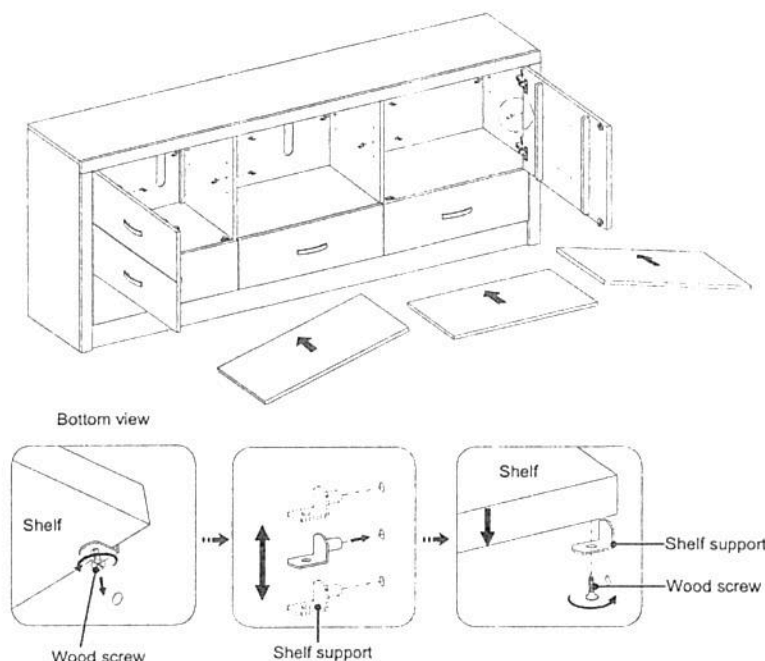
***Caution: Please read all instructions carefully before starting the assembly process. These parts are cumbersome and heavy. Therefore, two people are recommended in order to prevent personal injury and insure the parts are not damaged during the assembly.

STEP 1:



Open the drawers and doors and remove the handles from inside.
Re-install the handles to the front side of the drawers and doors with the unscrewed bolts.

STEP 2:



The adjustable shelves are pre-installed for shipping.
If the shelf position is not to your liking, adjust them to your desired location.



Assembly Instructions

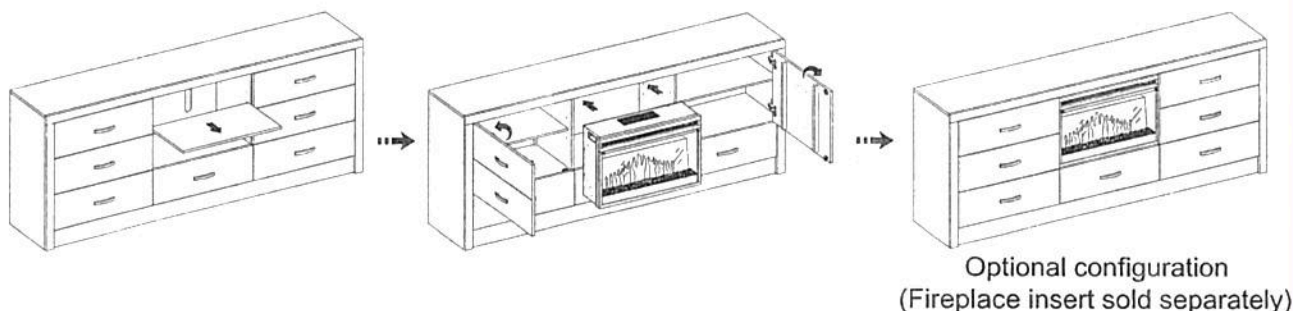
WHLM #MALIBU-CS82 MALIBU 82" TV CONSOLE SKU# 25062542

***Caution: Please read all instructions carefully before starting the assembly process. These parts are cumbersome and heavy. Therefore, two people are recommended in order to prevent personal injury and insure the parts are not damaged during the assembly.

STEP 3:

IMPORTANT NOTICE PLEASE READ

You can buy our Malibu 82" Back Panel (model #MALIBU-BP82, sold separately) and combine to the console to form an entertainment wall. This unit has been designed to be a mantel which can accommodate a 26" W x 17" H fireplace insert. You can buy our electric fireplace (model # FPCR26-2A, sold separately) and combine with this console. If you don't want to cheat it as a fireplace console, please skip to next step.

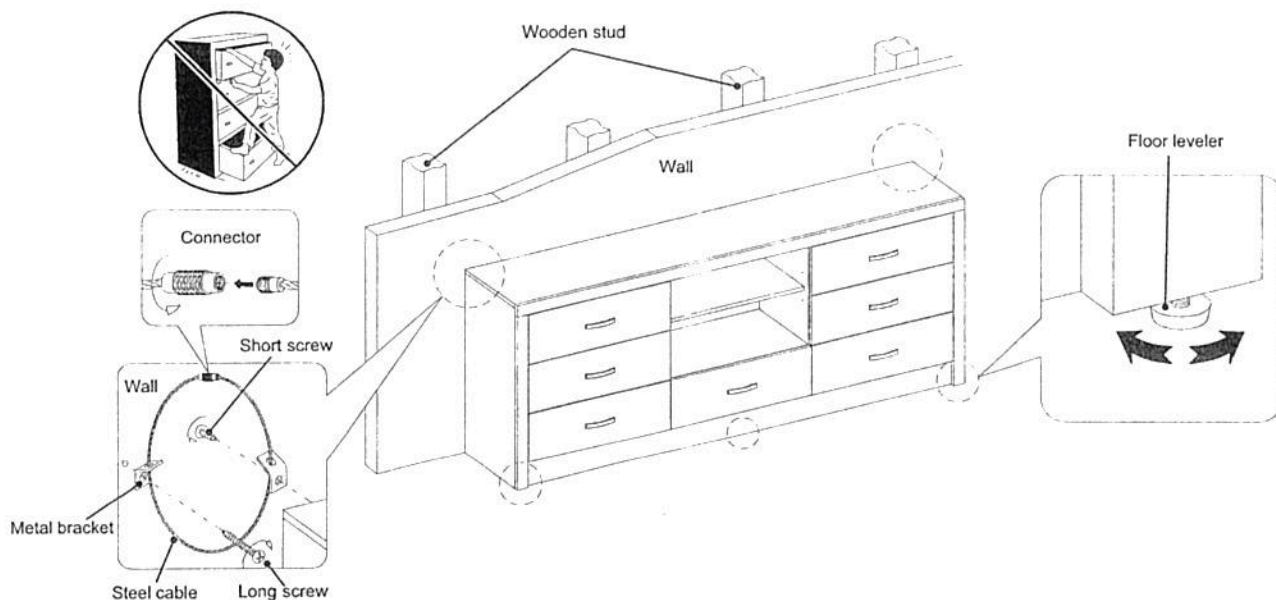


To apply the mantel configuration, you will need to follow the steps below:

- Look under the middle adjustable shelf, and locate the 1/2" wood screws holding the shelf to the shelf supports.
- Remove the 1/2" wood screws from each shelf support with a Phillips screwdriver.
- Remove the middle adjustable shelf and keep in a properly place for future use.
- Open the doors and carefully slide the fireplace insert (sold separately) into the center compartment until the side brackets fit onto the partition panels properly.

Note: Do not drag the fireplace insert across the fixed shelf as it may scratch the unit.

STEP 4:



Adjust floor levelers to level the unit against the wall.

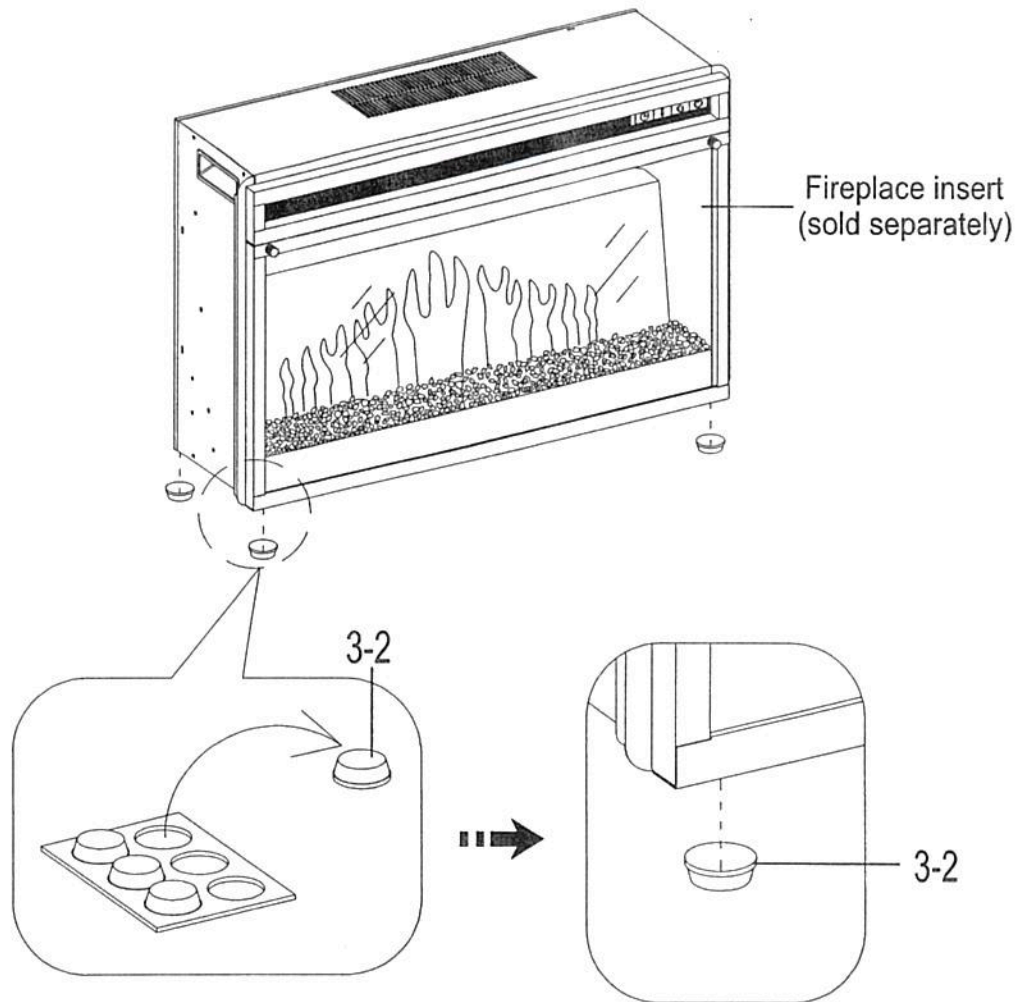
Secure the unit to the wall with the provided tipping restraint hardware kit.

Supplement page for MALIBU-CS82

Instructions for use with optional fireplace insert only.



3-2 Rubber Bumper (4 pcs)



STEP 3: Evenly stick rubber bumpers at each of the four corners on the bottom of fireplace insert (sold separately) before sliding it into the middle compartment.