

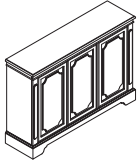
ASSEMBLY INSTRUCTIONS



HHTH-HH2HOME

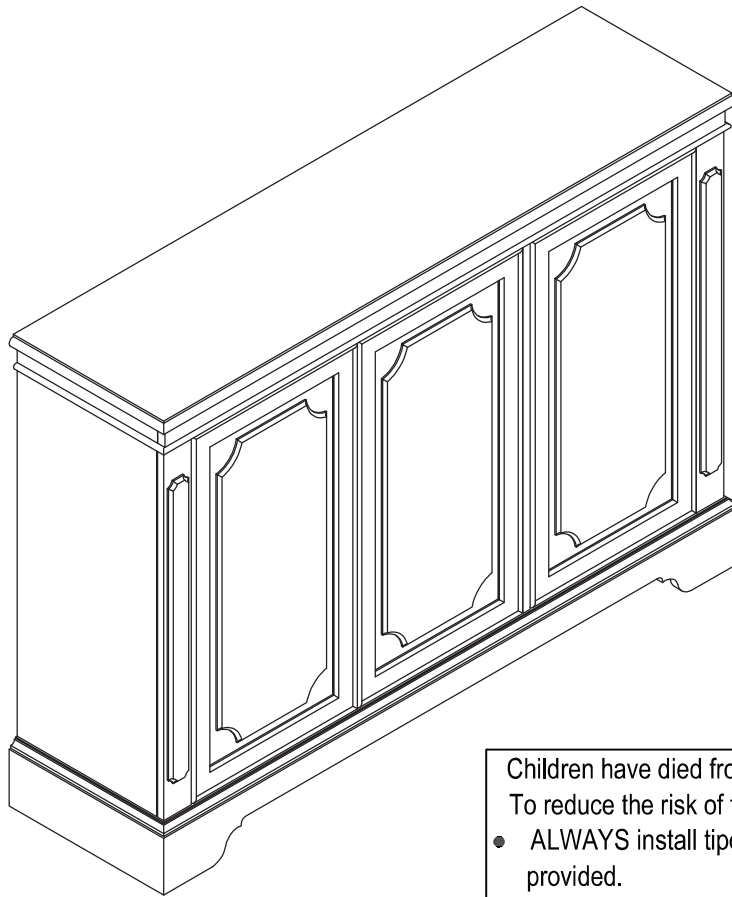
8050-208

THREE DOOR CREDENZA - SKU :26457540

Thank you for purchasing this quality product. Be sure to check all packing materials carefully for small parts which may have come loose inside the carton during shipment. Identify and count all parts and compare with the parts list below.

COMPONENT LIST			
NO.	Description	Sketch	Q'TY
A	Cabinet		1pc

HARDWARE LIST				
NO.	Picture	Description	Dimension	Q'TY
1		Tipping Restraint		1 Set
2		Tool Required(not provided)		



Children have died from furniture tipover.

To reduce the risk of furniture tipover:

- ALWAYS install tipover restraint provided.
- NEVER put a TV on this product.
- NEVER allow children to stand, climb or hang on drawers, doors, or shelves.
- NEVER open more than one drawer at a time.
- Place heaviest items in the lowest drawers.

PARTS DETAILS

This product is manufactured by HHTH for

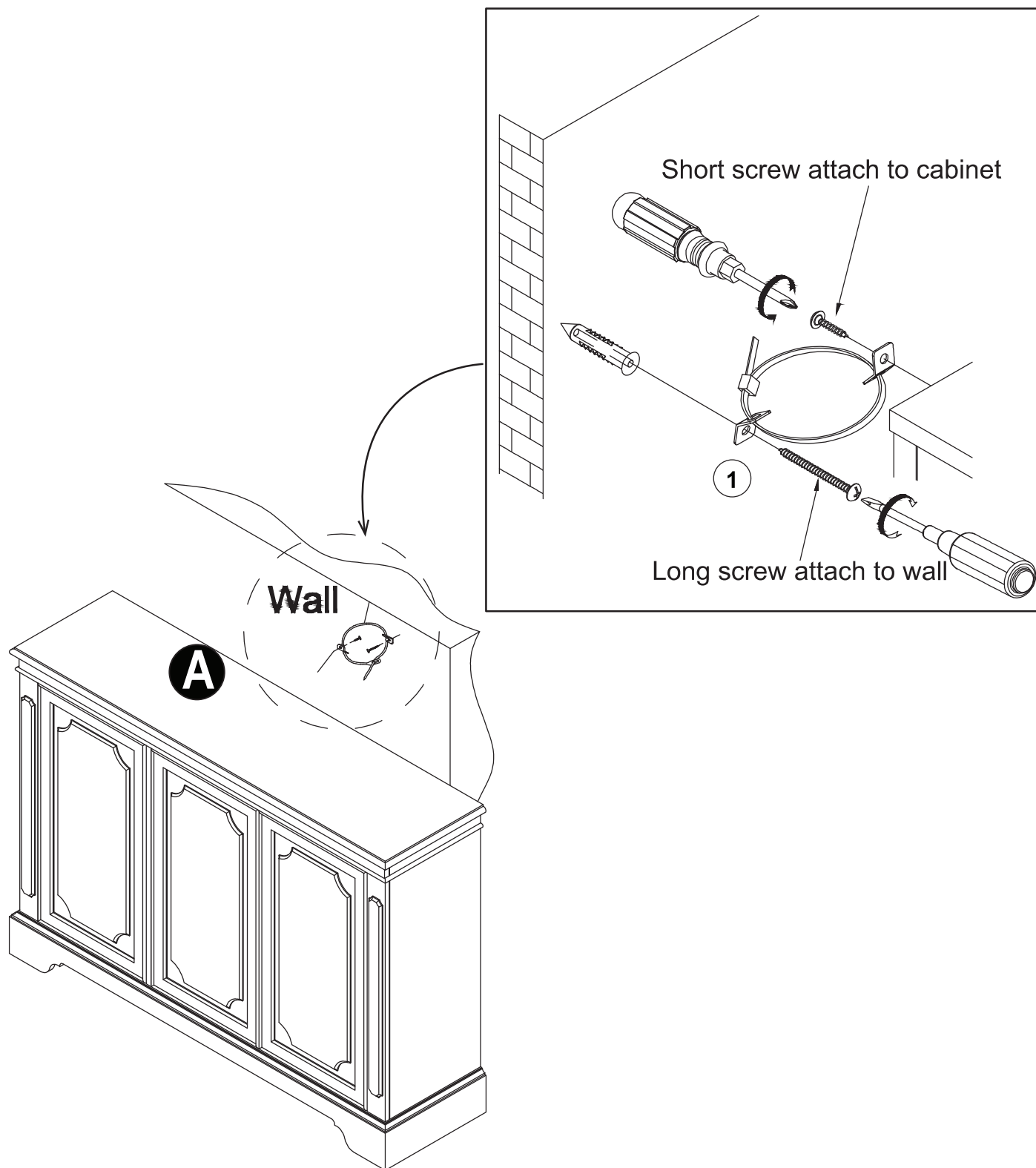
ROOMS TO GO®

ASSEMBLY INSTRUCTIONS

HHTH-HH2HOME 8050-208

THREE DOOR CREDENZA - SKU :26457540

STEP 1 : Attach anti tipping to the wall and cabinet (A)



This product is manufactured by HHTH for

ROOMS TO GO®

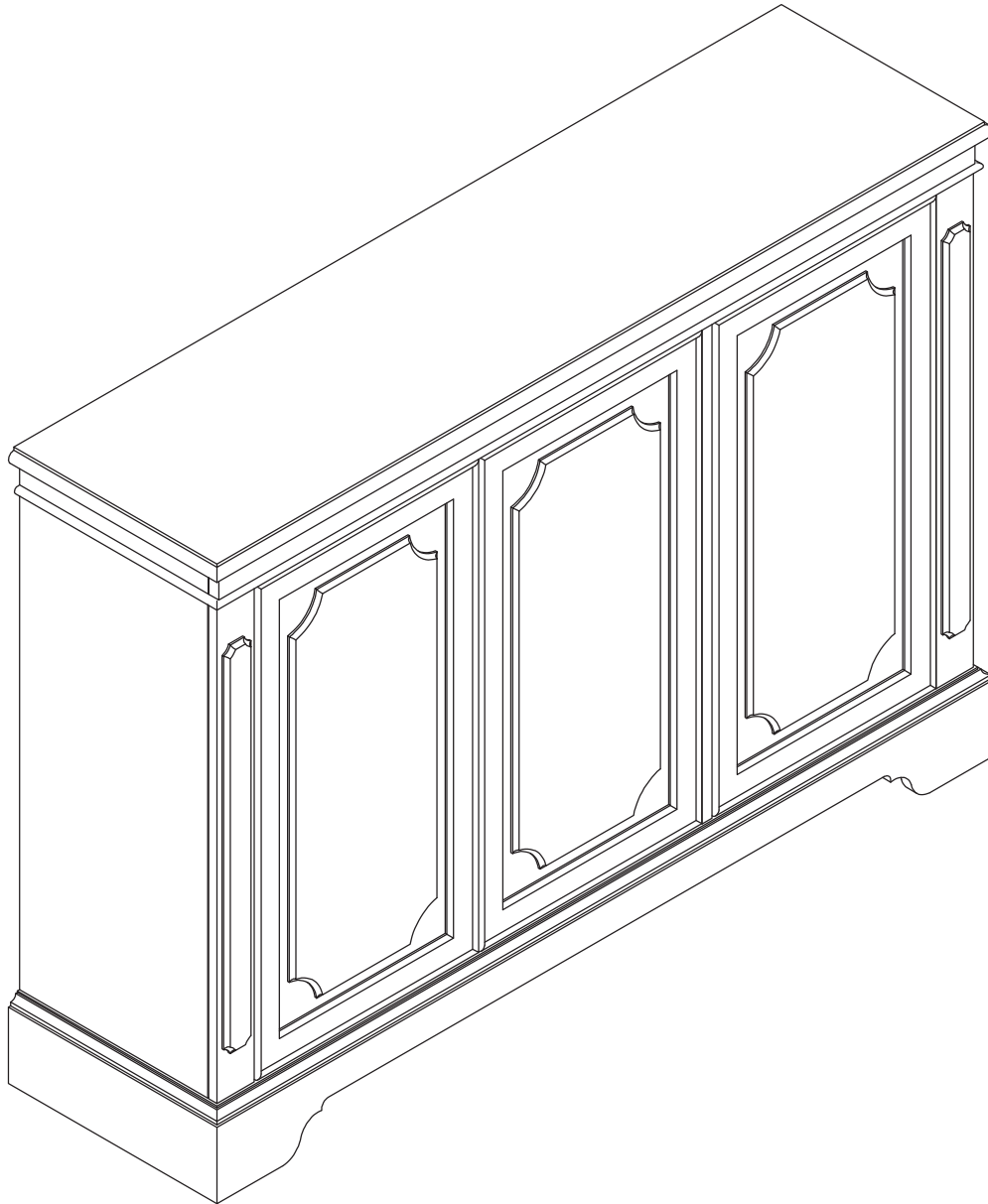
Version - 01/16/2025

Page 2/3

ASSEMBLY INSTRUCTIONS

HHTH-HH2HOME 8050-208 THREE DOOR CREDENZA - SKU :26457540

STEP 2 :



This product is manufactured by HHTH for

ROOMS TO GO® ►

Version - 01/16/2025

Page 3/3