



Assembly Instructions

RETG 1420-40 MIRROR - SKU# 32214203

Manufactured by RETG for Rooms To Go

Version#1 - 16/04/2024

*****Caution : Please read all instructions carefully before starting the assembly process. These parts are cumbersome and heavy. Therefore, two people are recommended in order to prevent personal injury and insure the parts are not damaged during the assemble.**

PARTS LIST

No.	Description	Sketch	Q'ty
1	Mirror		1 Pc
2	Mirror Support		2 Pc
3	Drawer Dresser (Sold Separately)		1 Pc

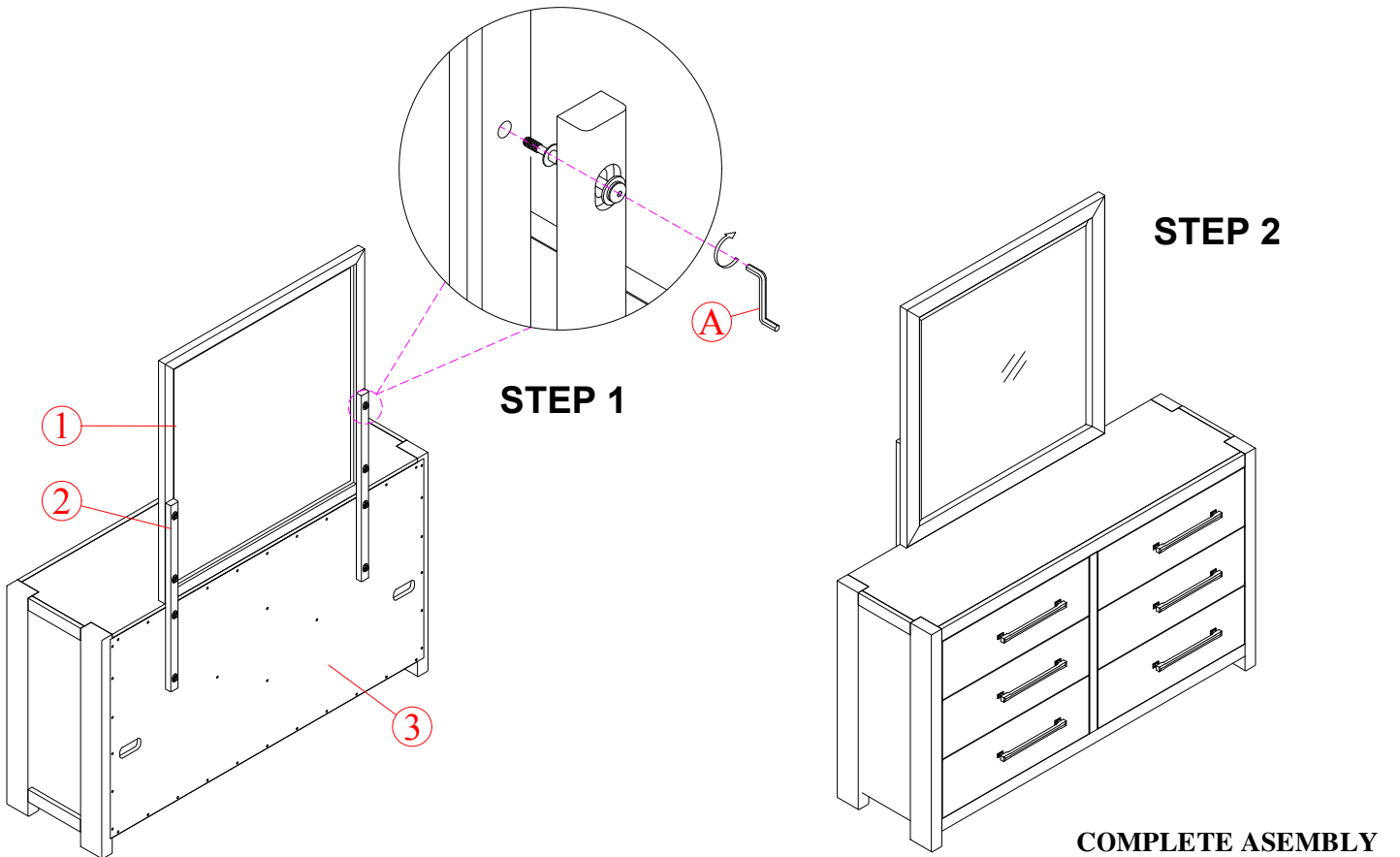
HARDWARE LIST

No.	Description	Size	Sketch	Q'ty
A	Allen Key Z	M4		1 Pc

Remark:
+ Do not fully tighten all bolts until assembly is complete

STEP 1: Attached the Mirror (1) to the Dresser (3) with Mirror support (2). Use the Allen key (A) from the Hardware package to tighten the allen bolts to the mirror. Allen bolt is already attached to the mirror support

STEP 2: Assembly is now complete.



Hardware Pack Location (s):

RETG 1420-40 MIRROR - SKU# 32214203