



# Assembly Instructions

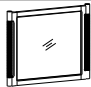


MGNH 5879-40 Landscape Mirror - SKU# 32258798

Manufactured by MGNH for Rooms To Go

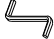
Version#1 - 05/10/2024

**\*\*\* Caution : Please read all instructions carefully before starting the assembly process. These parts are cumbersome and heavy. Therefore, two people are recommended in order to prevent personal injury and ensure the parts are not damaged during the assemble.**

## PARTS LIST

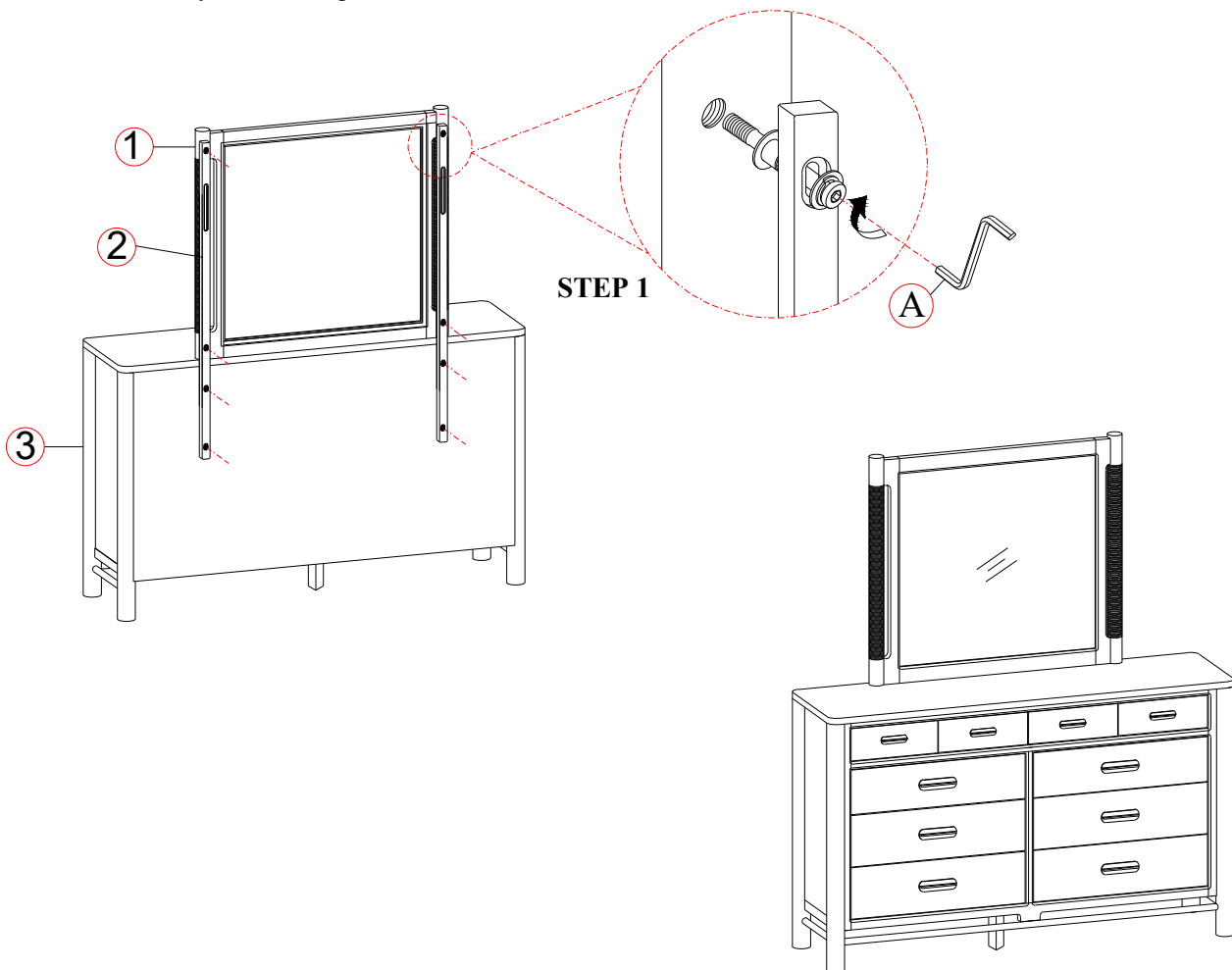
No.	Description	Sketch	Q'ty
1	Mirror		1 Pc
2	Mirror Support		2 Pcs
3	Dresser (Sold Separately)		1 Pc

## HARDWARE LIST

No.	Description	Size	Sketch	Q'ty
A	Allen Key Z	M4		1 Pc

**STEP 1:** Attached the Mirror (1) to the Dresser (3) with Mirror support (2). Use the Allen key (A) from the Hardware package to tighten the allen bolts to the mirror. Allen bolt is already attached to the mirror support.

**STEP 2:** Assembly is now complete.



COMPLETE ASSEMBLY

## Hardware Pack Location (s):

5879-40 Landscape Mirror SKU# 32258798