



ASSEMBLY INSTRUCTION

GLOB - 32458110 - #5811 - 8 KING SLEIGH PLATFORM HEADBOARD
 GLOB - 32858118 - #5811 - 10 KING LOW PROFILE FOOTBOARD
 GLOB - 32958110 - #5811 - 7 SIDE RAILS

Thank you for purchasing this quality product . Be sure to check all packing material carefully for small parts which may have come loose inside the carton during shipment . Identify and count all parts and compare with the parts list below .

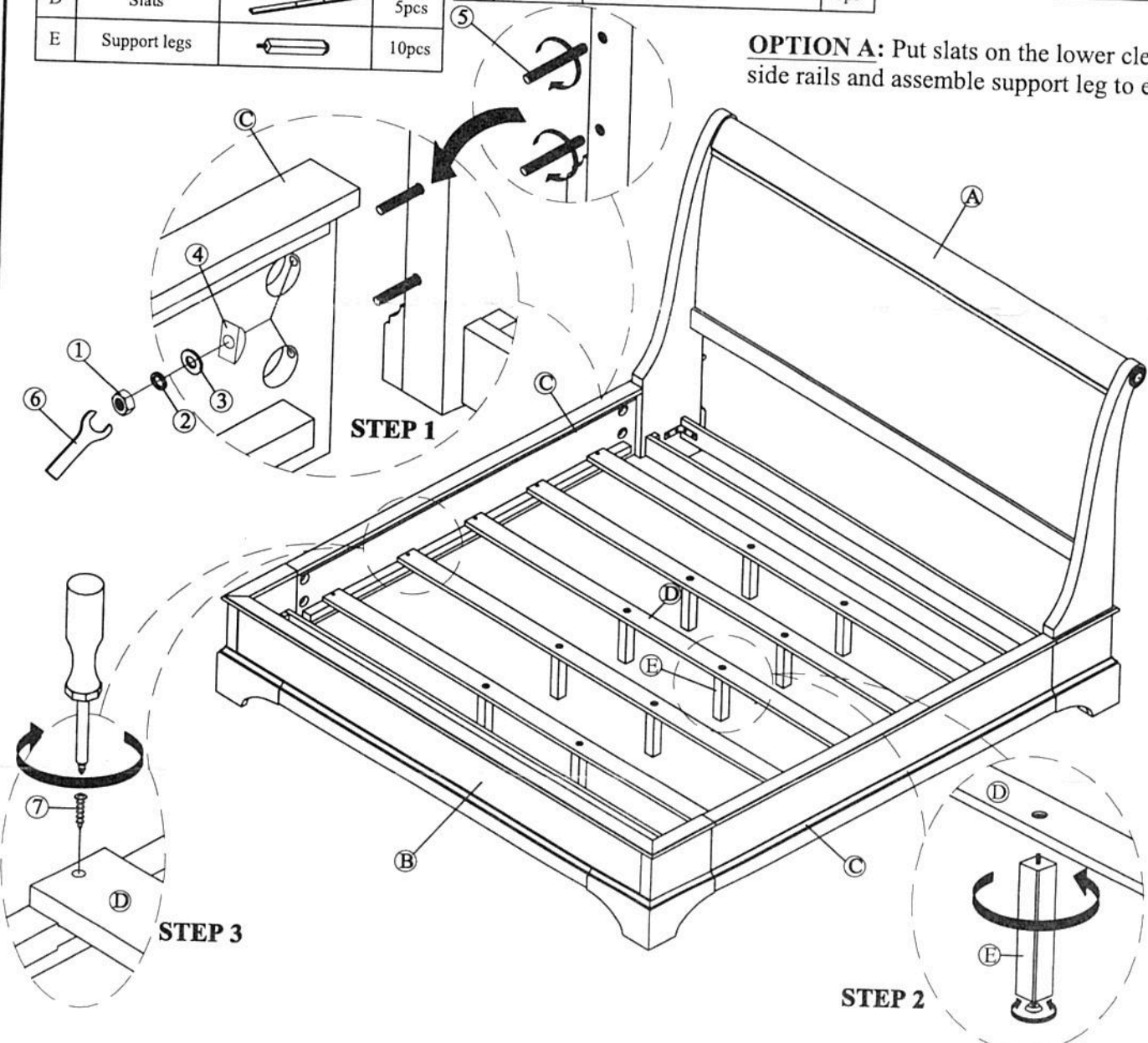
PARTS LIST			QTY
A	HeadBoard		1pc
B	FootBoard (Lower)		1pc
C	Side rails		2pcs
D	Slats		5pcs
E	Support legs		10pcs

HARDWARE LIST 1 (Packed with Side rail together)				QTY
1		Nut Ø5/16"xD12xH6mm	8pcs	
2		Lock washer Ø5/16"x14x1mm	8pcs	
3		Flat washer Ø5/16"x18x1mm	8pcs	
4		Curve washer Ø5/16"	8pcs	
5		Bolt Ø5/16"x18x3-1/2"	8pcs	
6		Wrench D12mm	1pc	

HARDWARE LIST 2 (Packed with King FB together)				QTY
7		Screw Ø8 x 1"	10pcs	
8		Allen key 4mm	1pc	

HARDWARE REQUIRED		QTY
	Screwdriver (Not Provided)	1pc

OPTION A: Put slats on the lower cleat of side rails and assemble support leg to each slat





ASSEMBLY INSTRUCTION

GLOB - 32458110 - #5811 - 8 KING SLEIGH PLATFORM HEADBOARD
GLOB - 32858118 - #5811 - 10 KING LOW PROFILE FOOTBOARD
GLOB - 32958110 - #5811 - 7 SIDE RAILS

Thank you for purchasing this quality product . Be sure to check all packing material carefully for small parts which may have come loose inside the carton during shipment .Identify and count all parts and compare with the parts list below .

OPTION B: Motion Bed

