

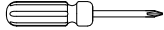
Assembly Instruction

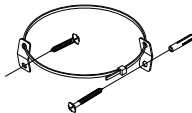
HMIS 3320-60 CHEST

SKU # 32633201

***Caution: Please read all instructions carefully before starting the assembly process. These parts are cumbersome and heavy. Therefore, two people are recommended in order to prevent personal injury and ensure the parts are not damaged during the assembly.

TOOLS REQUIRED (NOT PROVIDED)

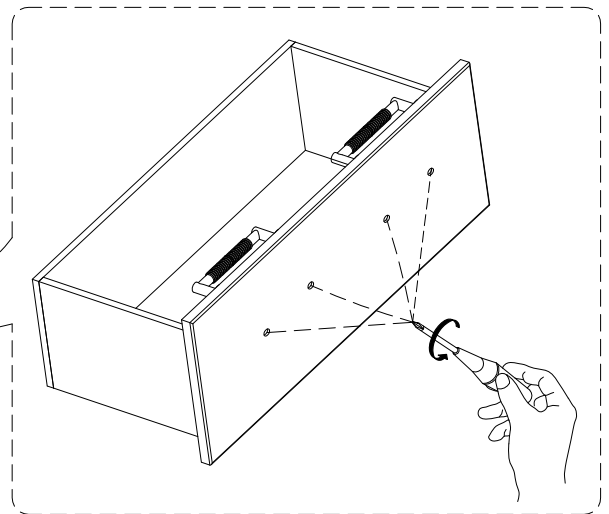
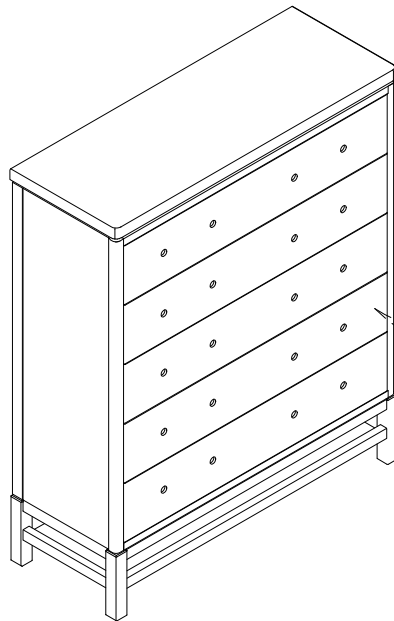
Description	Sketch
Phillips screwdriver	

Step	Code	Hardware List		
3	A	Screw - #8x3x50mm		1Pc
		Screw - #8x3x15mm		1Pc
		Metal Anchor - 1.2x15x15mm		2Pcs
		Restrain Strap - 5x7x250mm		1Pc
		Fisher - Ø1/4"x40mm		1Pc

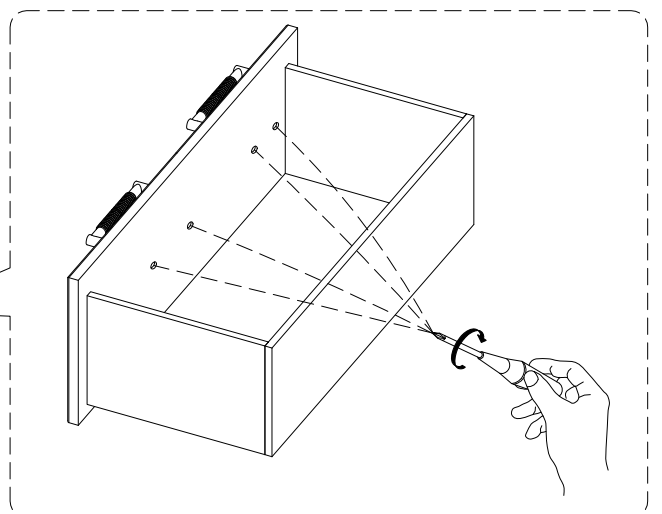
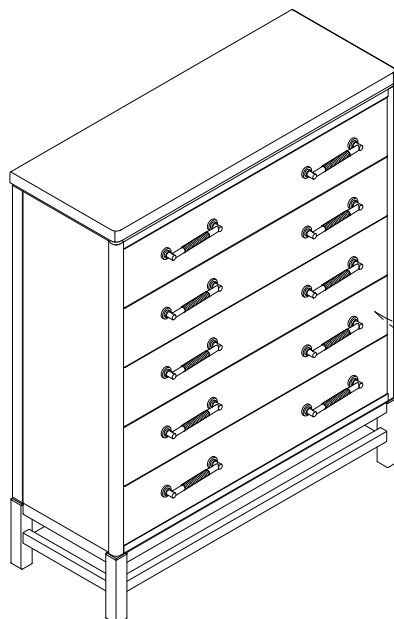
STEP 1 : Use a screwdriver to remove the two bolts.

STEP 2 : Bring the handle to the outside and then use a screwdriver to lock the two bolts.

STEP 1



STEP 2



This product is manufactured by HMIS for

ROOMS TO GO ►

MADE IN VIETNAM

1 OF 2

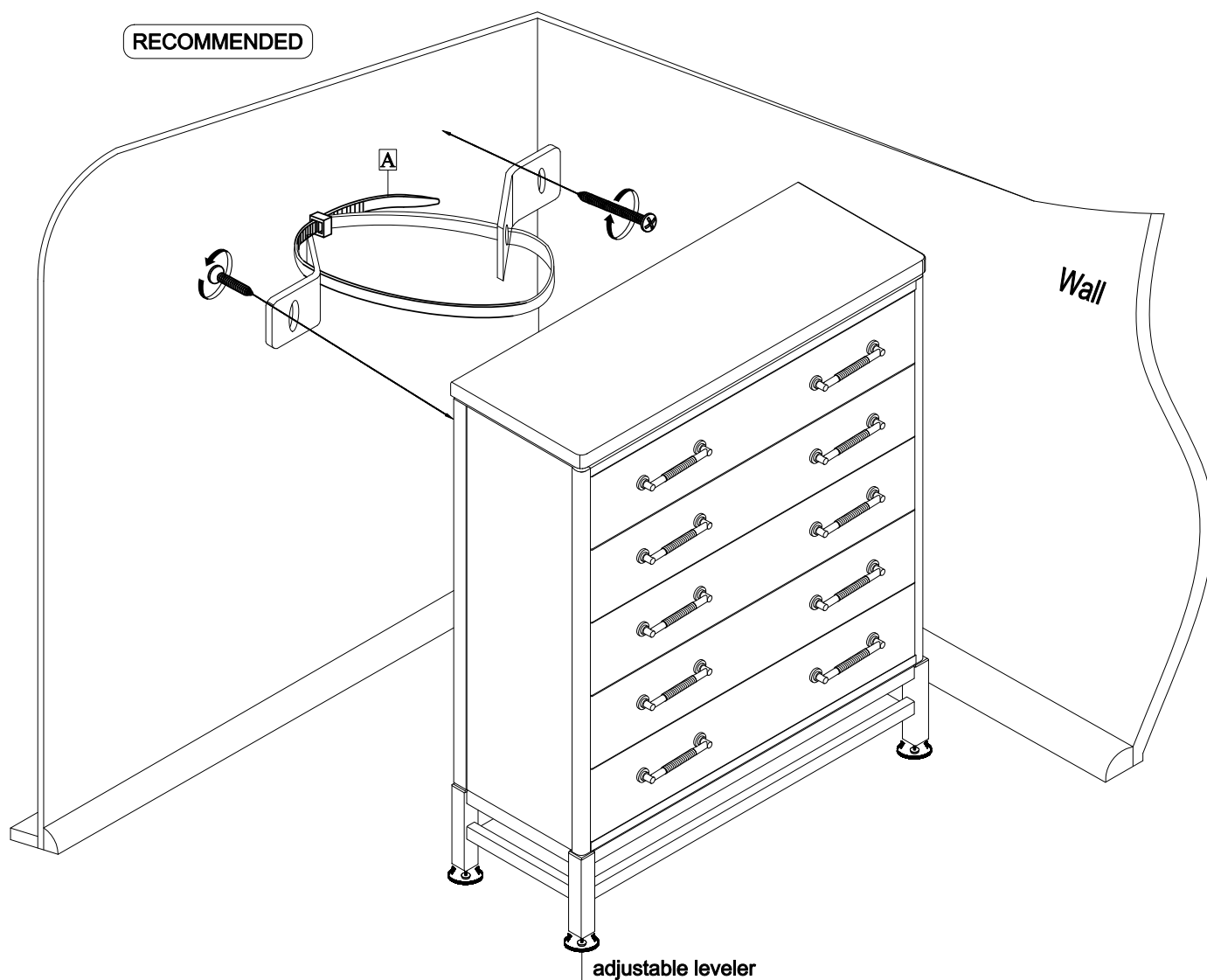
Assembly Instruction

HMIS 3320-60 CHEST

SKU # 32633201

***Caution: Please read all instructions carefully before starting the assembly process. These parts are cumbersome and heavy. Therefore, two people are recommended in order to prevent personal injury and ensure the parts are not damaged during the assembly.

STEP 3



This product is manufactured by HMIS for

ROOMS TO GO ►

MADE IN VIETNAM

2 OF 2