



# Assembly Instructions


MGNH 5879-10 Drawer Chest - SKU# 32658796

Manufactured by MGNH for Rooms To Go

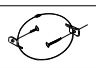
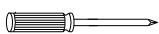
Version#1 - 05/10/2024

**\*\*\* Caution : Please read all instructions carefully before starting the assembly process. These parts are cumbersome and heavy. Therefore, two people are recommended in order to prevent personal injury and ensure the parts are not damaged during the assemble.**

## PARTS LIST

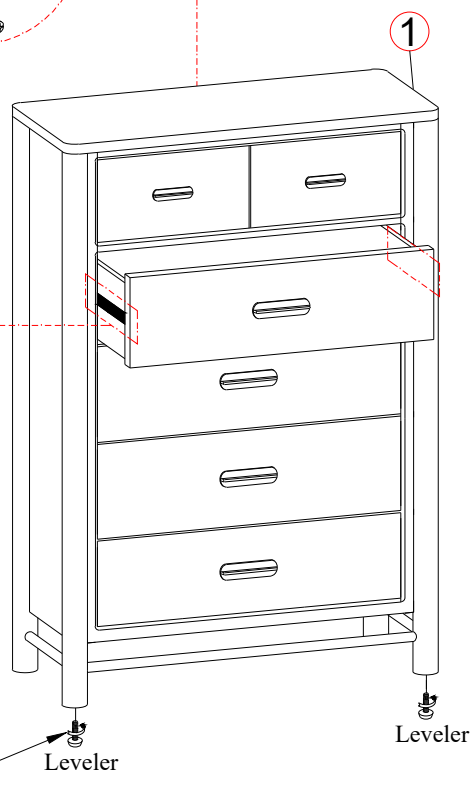
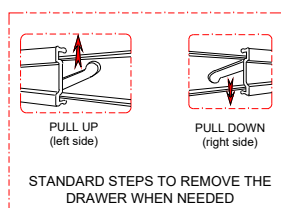
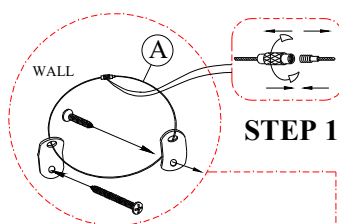
No.	Description	Sketch	Q'ty
1	Drawer Chest		1 Pc

## ANTI TIPPING KIT LIST

No.	Description	Size	Sketch	Q'ty
A	Tipping Restraint			1 Set
TOOLS REQUIRED (NOT PROVIDED)				
Description		Sketch		
Phillips screwdriver				

**STEP 1:** Position Drawer Chest in its desired location. If any of the four (4) feet are not firmly touching the ground, unscrew the adjustable Leveler on the two Front Legs until the Drawer Chest is stable. Refer to the assembly instructions of Anti tipping kits to fix Drawer Chest to the wall.

Remark:  
Anti-tip hardware - customer assembly required



## Hardware Pack Location (s):

5879-10 Drawer Chest SKU# 32658796