



Drawing Code
TM265SMN002
REV. 0
STYLE
EVELYN

Item Description
EVELYN Dresser Assembling Instructions
SKU 33174208-33174210 -

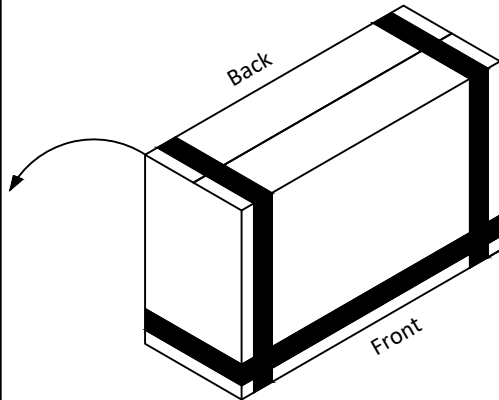
Date 18/12/2024
Sheet 1/5
Designer:
L.T.



1 Rotate 90° twice counter-clockwise



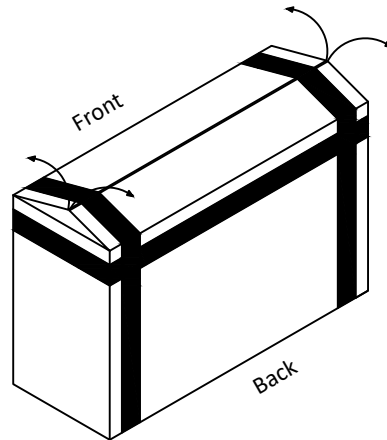
Anti Tip
Hardware
included



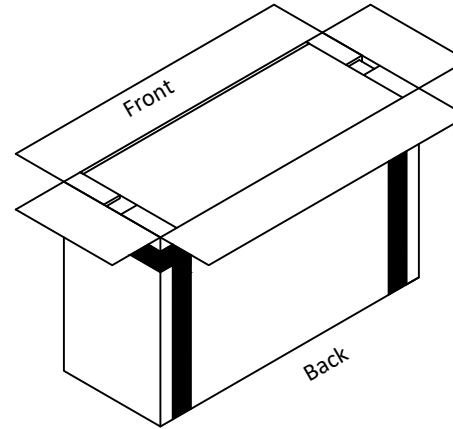
2 Open the carton using a cutter



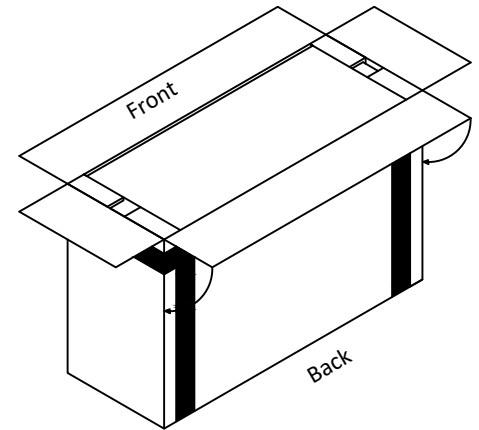
Cutter
not
included



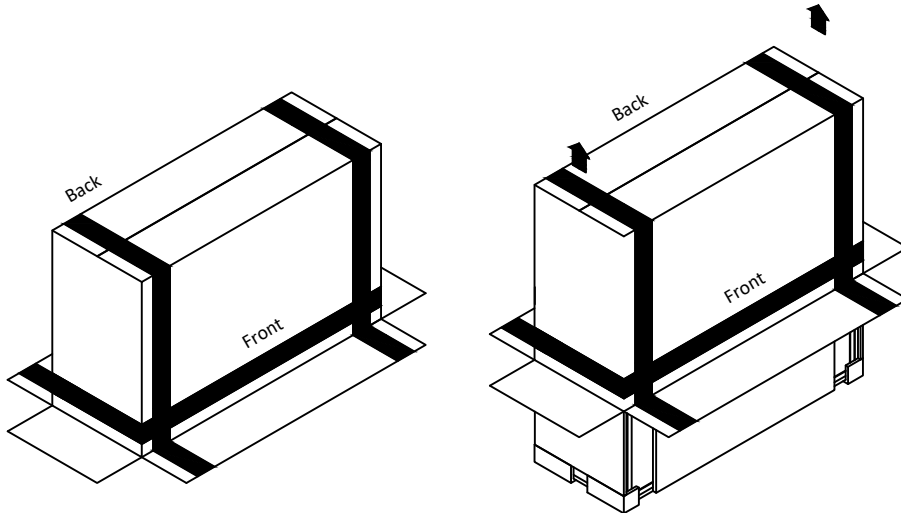
3 Open the carton fold



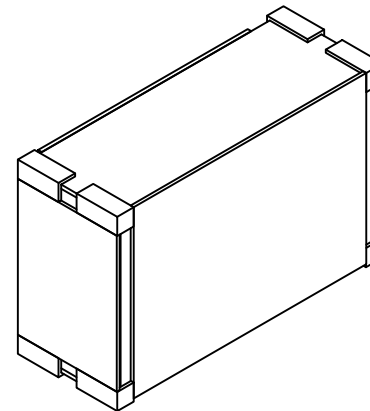
4 Rotate 90° twice -clockwise



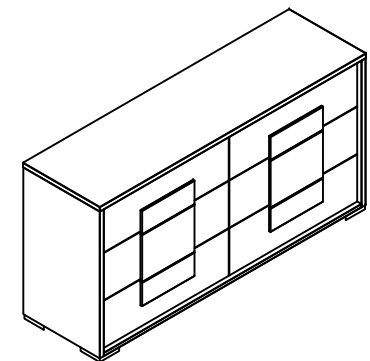
5 Lift the carton off



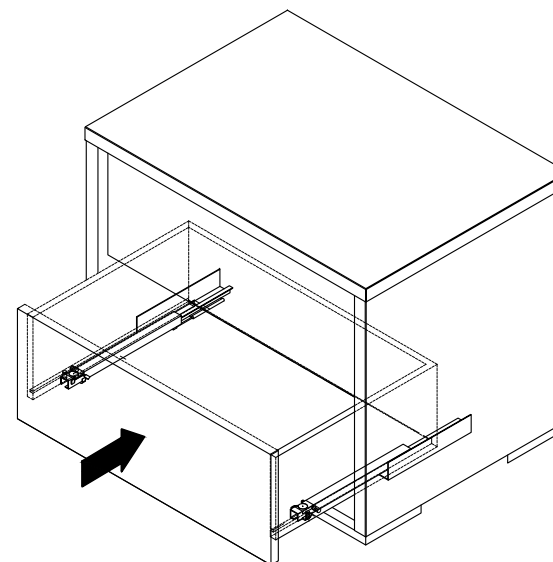
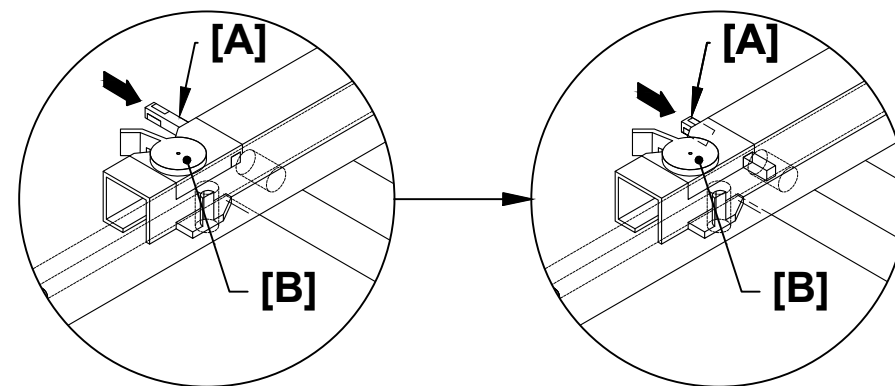
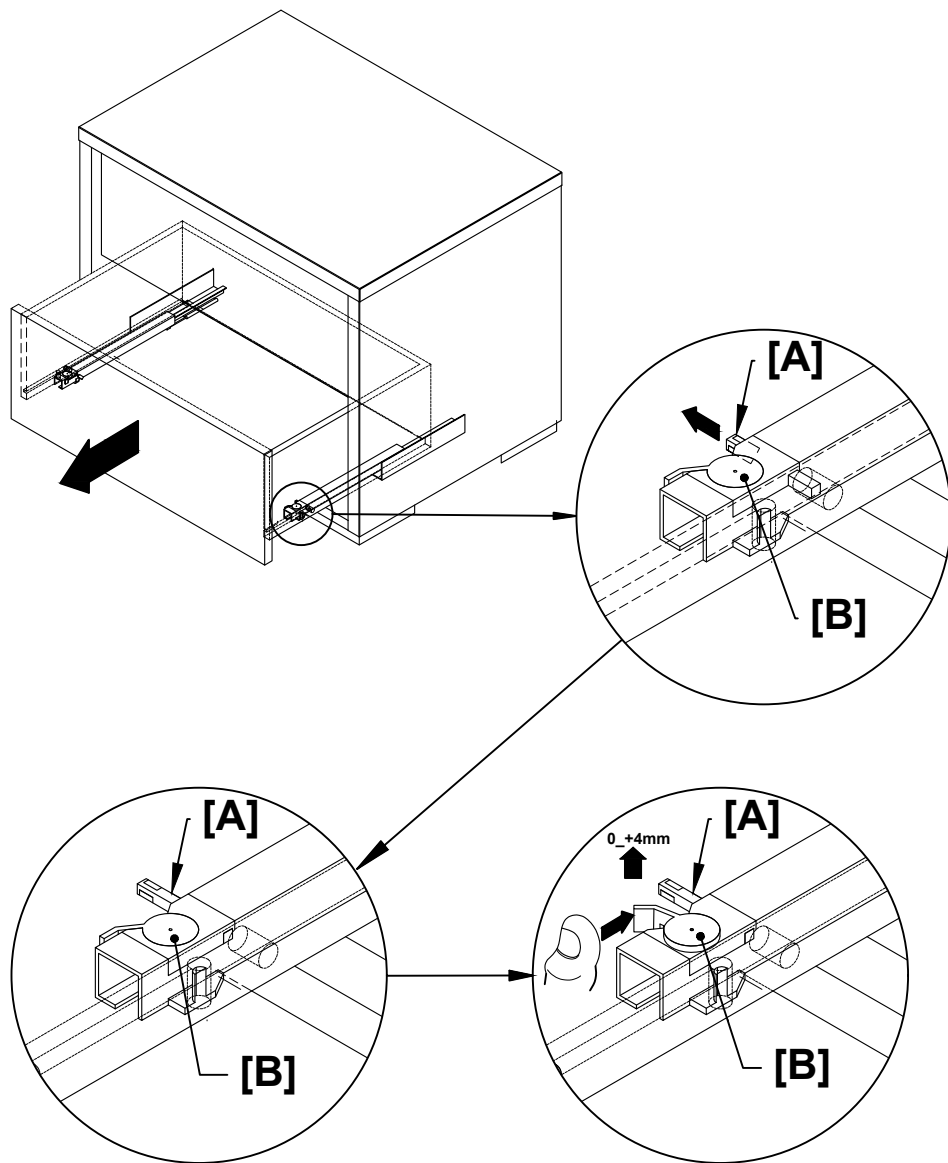
6 Remove all the packaging



7 Dresser ready to work

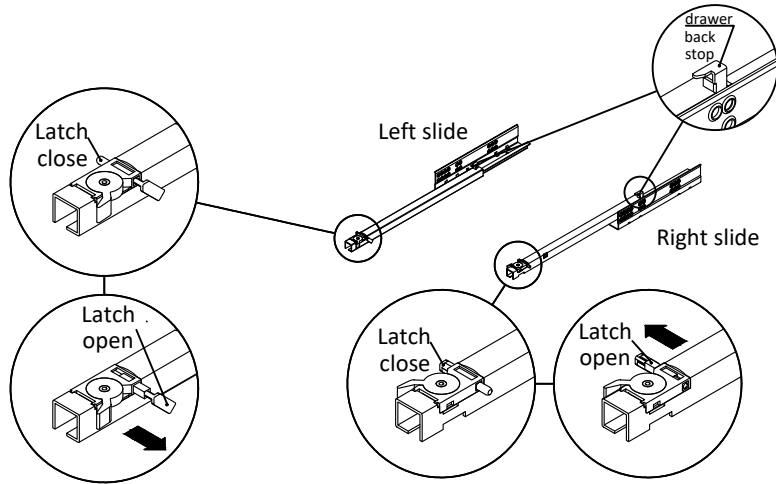


8 Open and unhook the [A] fixing pin under the drawer.
Turn the [B] camme (0-4mm max).

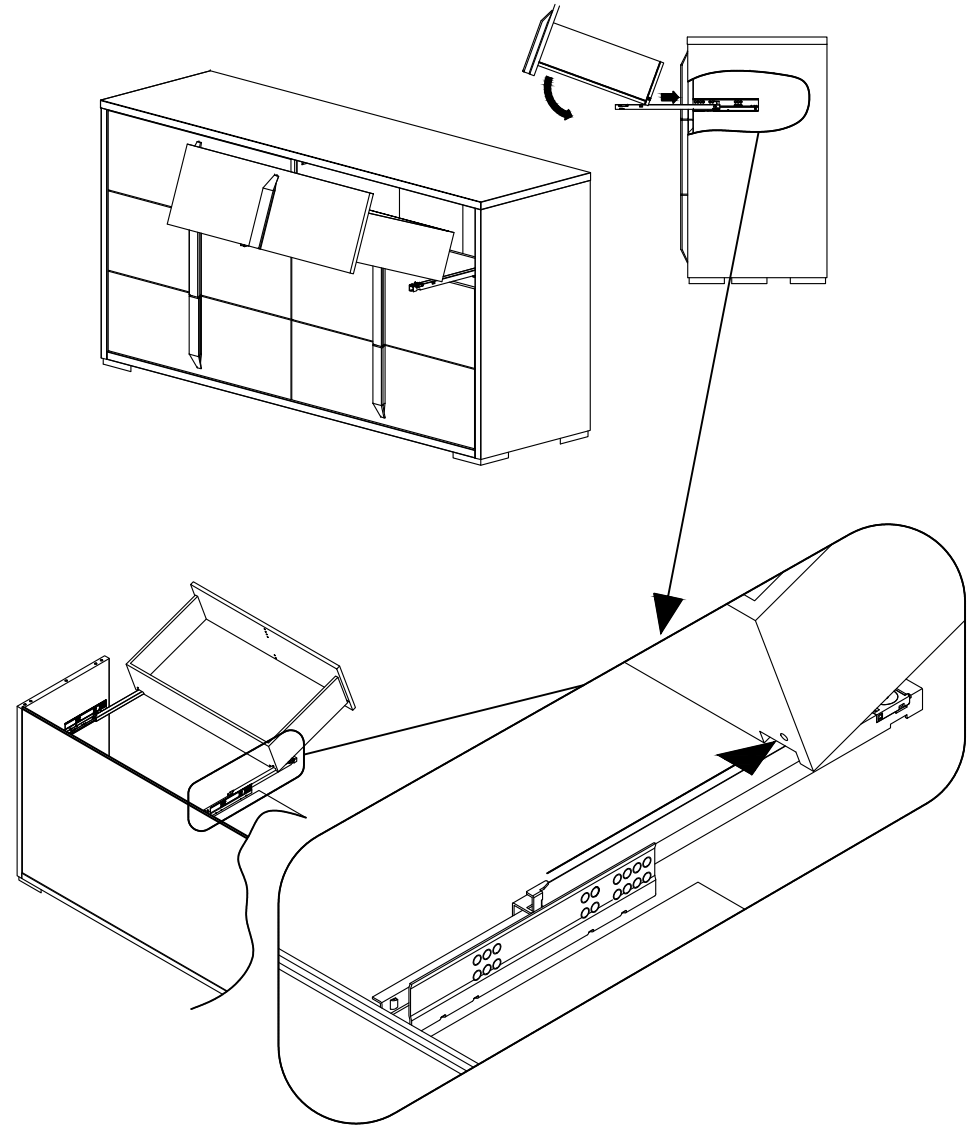
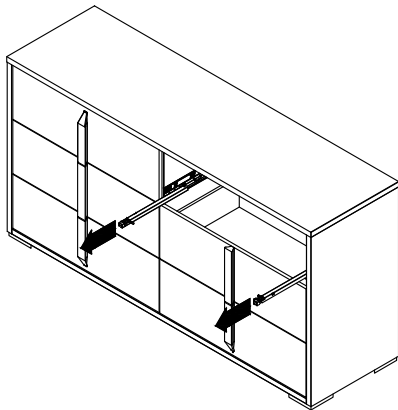


- 10** If a drawer does not close properly, or get's stuck, the most likely cause is that the drawer came of the "glide".
This is not a defect and can easily be corrected. Remove all contents of the drawer.

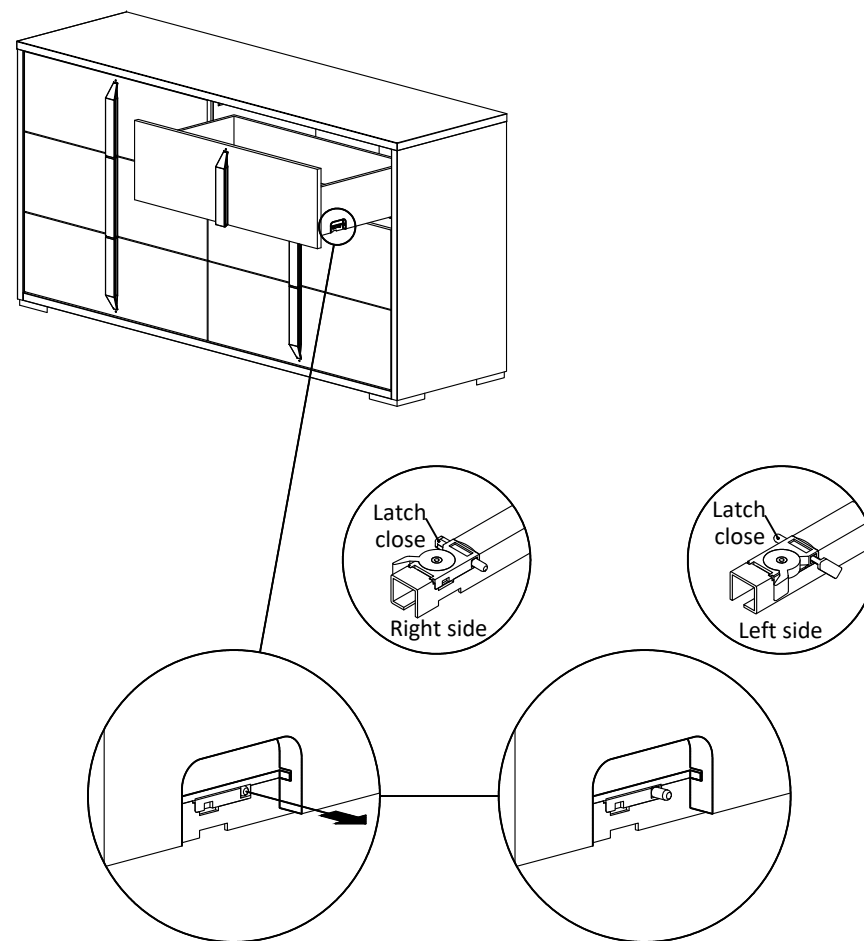
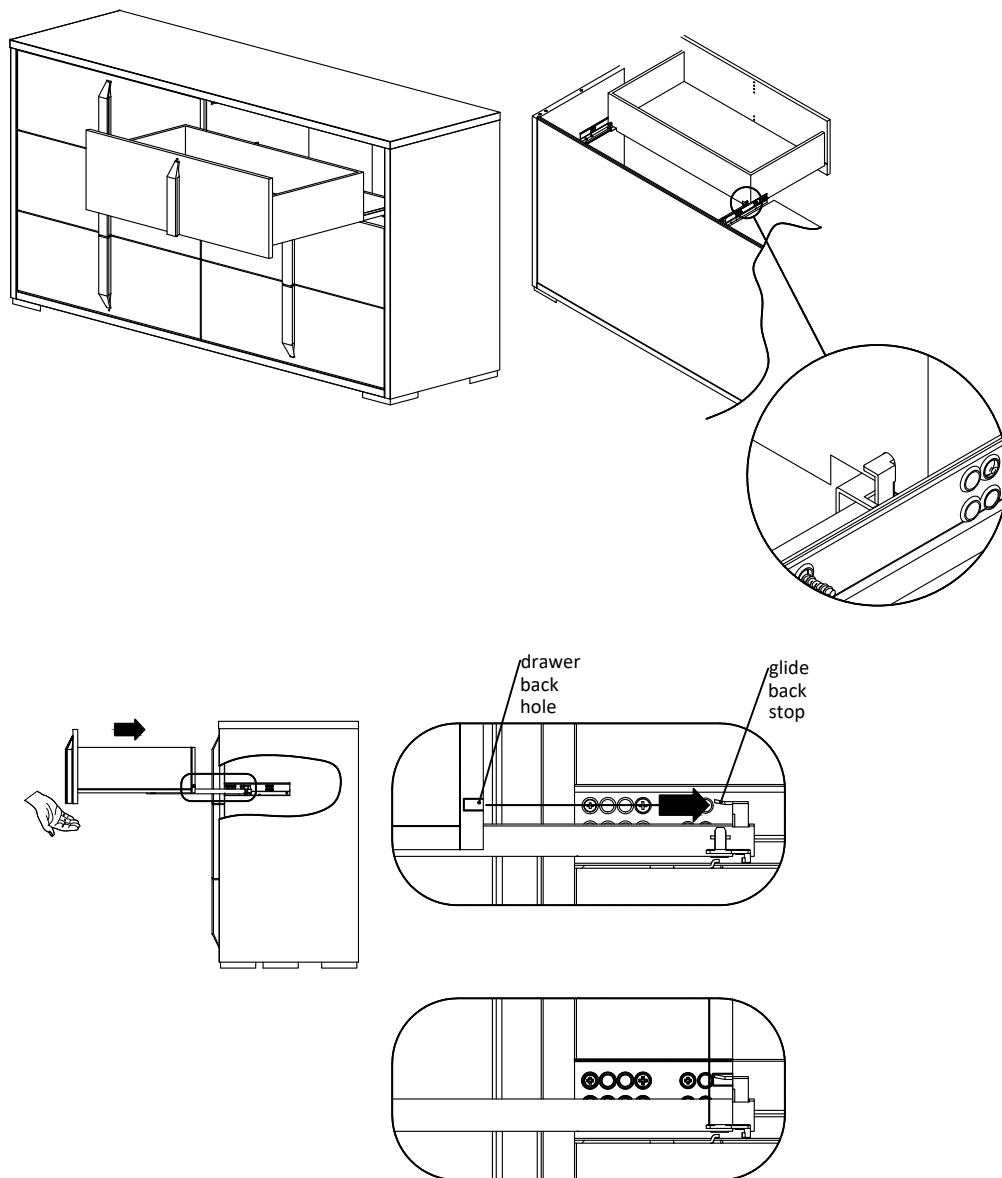
If the drawer comes off the glide,visulay inspect underneith the drawer.
Make sure you pull the latch into the "open" position on both drawer glides.



- 11** Pull the glides out with latches.



13 Make sure the drawer back stop is inserted in the back of the drawer, into the lower drawer hole.





FABELLI
FURNITURE
MODERN LIVING
DESIGN

Drawing Code
TM265SMN002

REV.
0

Item Description
EVELYN Dresser Assembling Instructions
SKU 33174208-33174210 -

STYLE
EVELYN

Date **18/12/2024**

16

5-Bring both ends together and rotate the thumb nut onto the threaded end until tight.
6-Confirm that the cable is securely laced and locked.

Sheet 5/5

Designer:
L.T.

- 15** This anti-tip device must be attached to a wall stud using the 2" screw enclosed.
- 1-Attach a bracket securely to back top rail or bak top edge of the furniture using the 5/8" screw provided, through the smaller hole in the bracket.
 - 2-Locate the other bracket on the wall over a stud and 2 inches below the mounting bracket secured to the back of your unit. Attached to the wall stud using the 2"screw provided, through the smaller hole in the bracket.
 - 3-Place the furniture into position so mounting bracket are vertically in line.
 - 4-Lace the threaded end of the restraint cable through the larger hole in each mounting bracket.

