

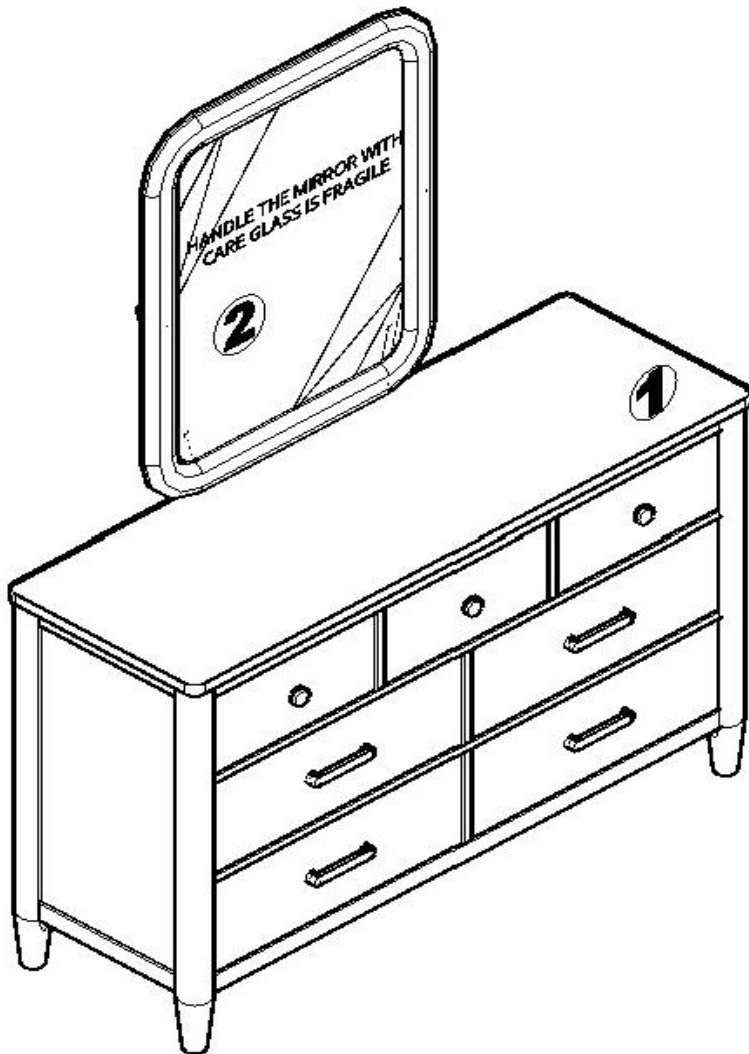
# ROOMS TO GO KIDS

Manufactured for Rooms to Go

## MODERN COLORS COLLECTION

THANK YOU FOR YOUR PURCHASE

- Read all the instructions, identify all components, and be sure you have all parts prior to assembly
- DO NOT Use substitute parts. Contact your local Rooms To Go or visit [www.ROOMSTOGO.COM](http://www.ROOMSTOGO.COM) for replacement parts and instructional literature if needed.



### 7 DRW DRESSER&LANDSCAPE MIRROR WHITE

RTG SKU #	STYLE #	ITEM DESCRIPTION
34111269	12W-207	7 DRAWER DRESSER
34011267	12W-300	LANDSCAPE MIRROR

### 7 DRW DRESSER&LANDSCAPE MIRROR PETAL PINK

RTG SKU #	STYLE #	ITEM DESCRIPTION
34111271	12A-207	7 DRAWER DRESSER
34011279	12A-300	LANDSCAPE MIRROR

### 7 DRW DRESSER&LANDSCAPE MIRROR IRON ORE

RTG SKU #	STYLE #	ITEM DESCRIPTION
34111233	12D-207	7 DRAWER DRESSER
34011231	12D-300	LANDSCAPE MIRROR

### 7 DRW DRESSER&LANDSCAPE MIRROR SLATE BLUE

RTG SKU #	STYLE #	ITEM DESCRIPTION
34111245	12E-207	7 DRAWER DRESSER
34011243	12E-300	LANDSCAPE MIRROR

### 7 DRW DRESSER&LANDSCAPE MIRROR LIGHT GRAY

RTG SKU #	STYLE #	ITEM DESCRIPTION
34111257	12G-207	7 DRAWER DRESSER
34011255	12G-300	LANDSCAPE MIRROR

### PARTS LIST

### QTY

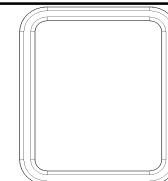
**1**



7 DRAWER DRESSER

**1 PCS**

**2**



LANDSCAPE MIRROR

**1 PCS**

### HARDWARE LIST [HPK00171-0]

### QTY

**A**



WOOD SUPPORT

**2 PCS**

**B**



1 3/8" SCREW

**8 PCS**

**C**

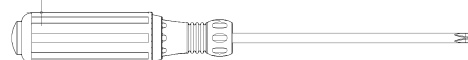


1" WASHER #10 ZINC

**8 PCS**

### TOOLS NEEDED

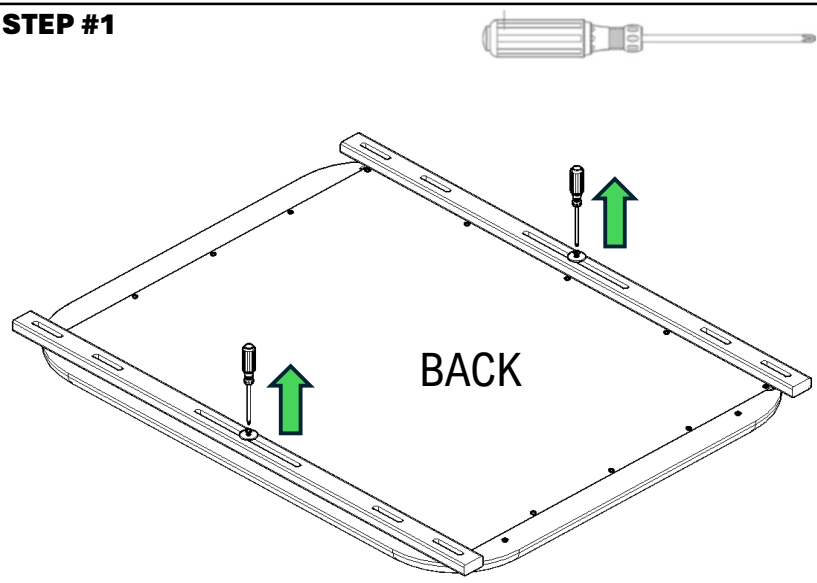
PHILLIPS SCREWDRIVER [NOT INCLUDED]



**TWO PEOPLE ARE NEEDED TO ASSEMBLE  
DO NOT TIGHTEN COMPLETELY UNTIL ALL PIECES  
ARE CONNECTED TOGETHER**

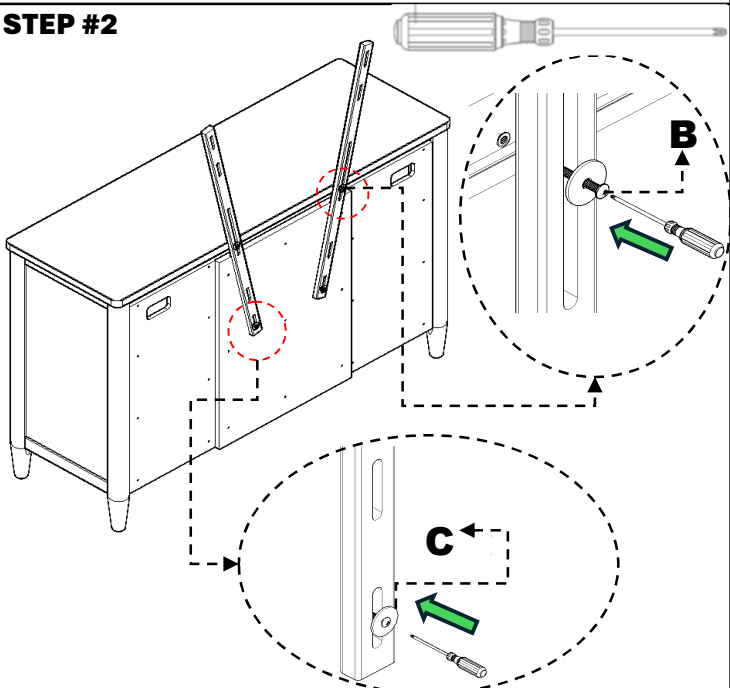
# ASSEMBLY INSTRUCTIONS

## STEP #1



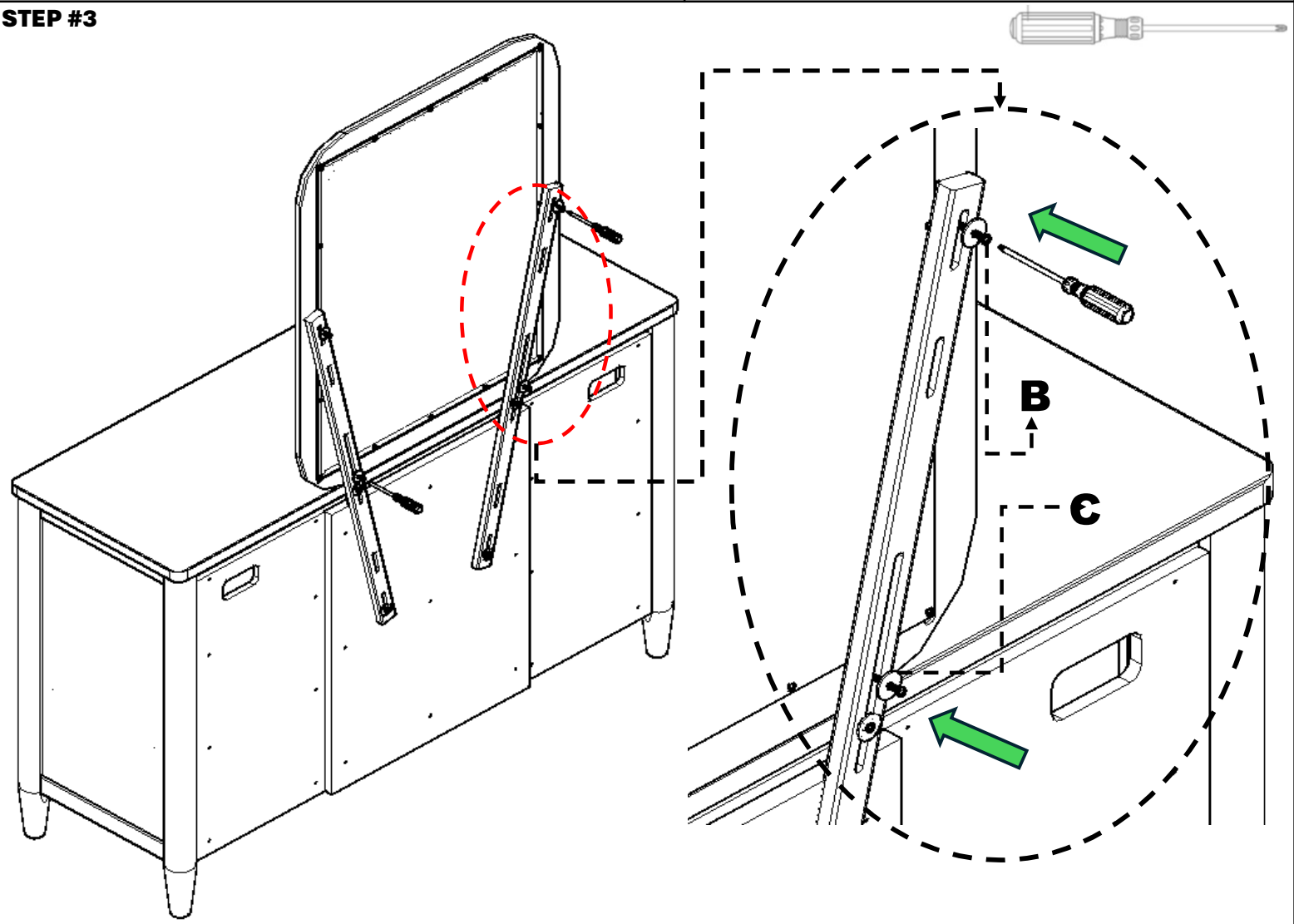
Place mirror on a flat surface front down, then remove all four screws and washers.

## STEP #2



Assemble wood supports on the back of dresser

## STEP #3



Attach mirror to dresser **MAKE SURE ALL SCREWS ARE TIGHTENED COMPLETELY** (Do not over tighten)