

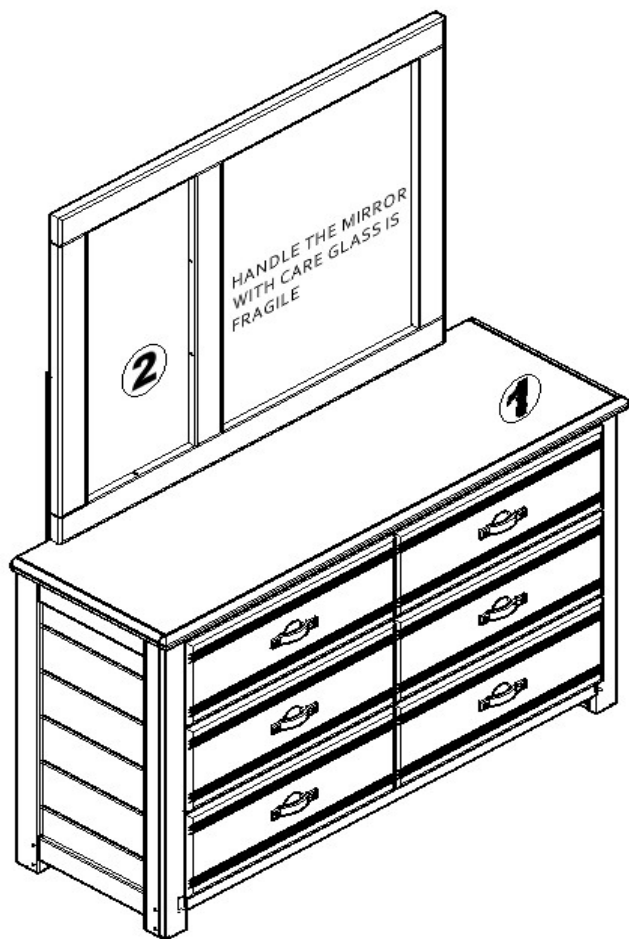
ROOMS TO GO KIDS

Manufactured for Rooms to Go

CREEKSIDE 2.0 COLLECTION

THANK YOU FOR YOUR PURCHASE

- Read all the instructions, identify all components, and be sure you have all parts prior to assembly
- DO NOT Use substitute parts. Contact your local Rooms To Go or visit www.ROOMSTOGO.COM for replacement parts and instructional literature if needed.



6 DRW DRESSER&LANDSCAPE MIRROR CHARCOAL		
RTG SKU #	STYLE #	ITEM DESCRIPTION
37340407	40G-216	6 DRAWER DRESSER
34040408	40G-320	LANDSCAPE MIRROR

6 DRW DRESSER&LANDSCAPE MIRROR CHESTNUT		
RTG SKU #	STYLE #	ITEM DESCRIPTION
37340419	40B-216	6 DRAWER DRESSER
34040410	40B-320	LANDSCAPE MIRROR

PARTS LIST		QTY
1	<p>6 DRAWER DRESSER</p>	1 PCS
2	<p>LANDSCAPE MIRROR</p>	1 PCS

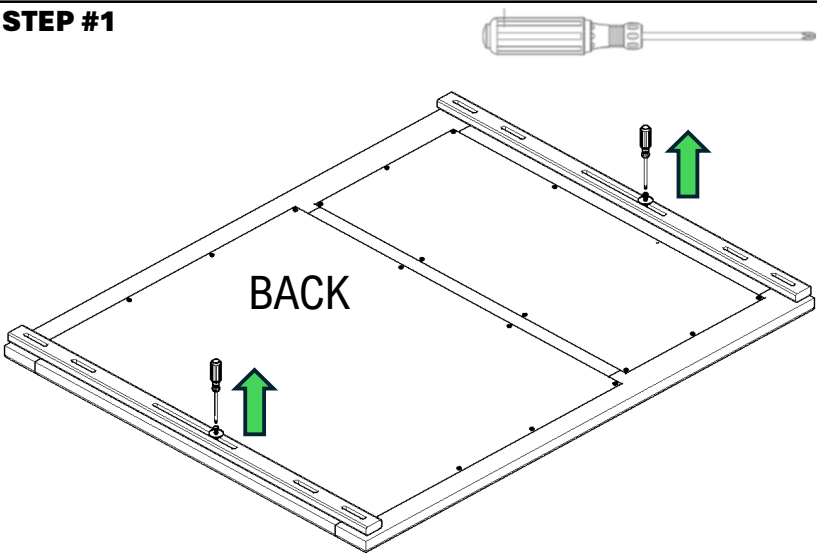
HARDWARE LIST [HPK40320-0]		QTY
A	<p>WOOD SUPPORT</p>	2 PCS
B	<p>1 3/8" SCREW</p>	8 PCS
C	<p>1" WASHER #10 ZINC</p>	8 PCS

TOOLS NEEDED	
<p>PHILLIPS SCREWDRIVER [NOT INCLUDED]</p>	

**TWO PEOPLE ARE NEEDED TO ASSEMBLE
DO NOT TIGHTEN COMPLETELY UNTIL ALL PIECES
ARE CONNECTED TOGETHER**

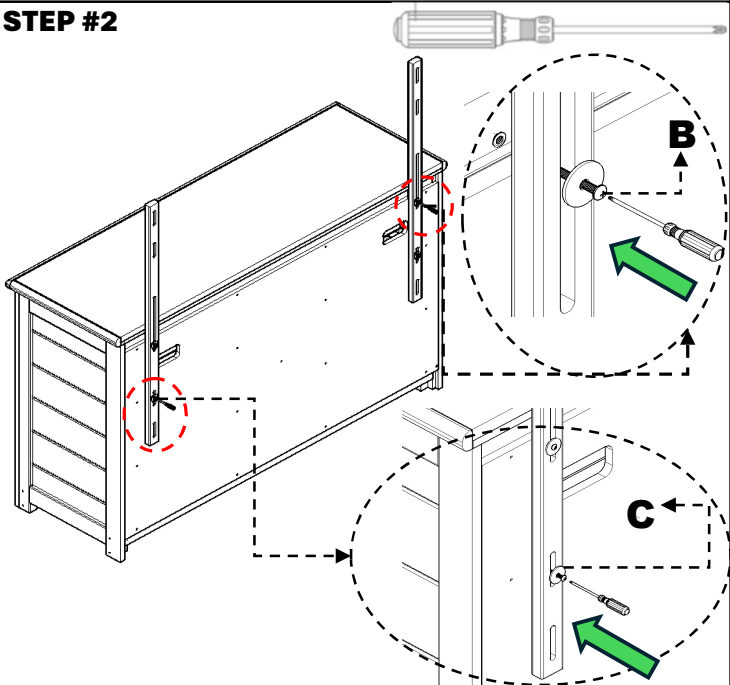
ASSEMBLY INSTRUCTIONS

STEP #1



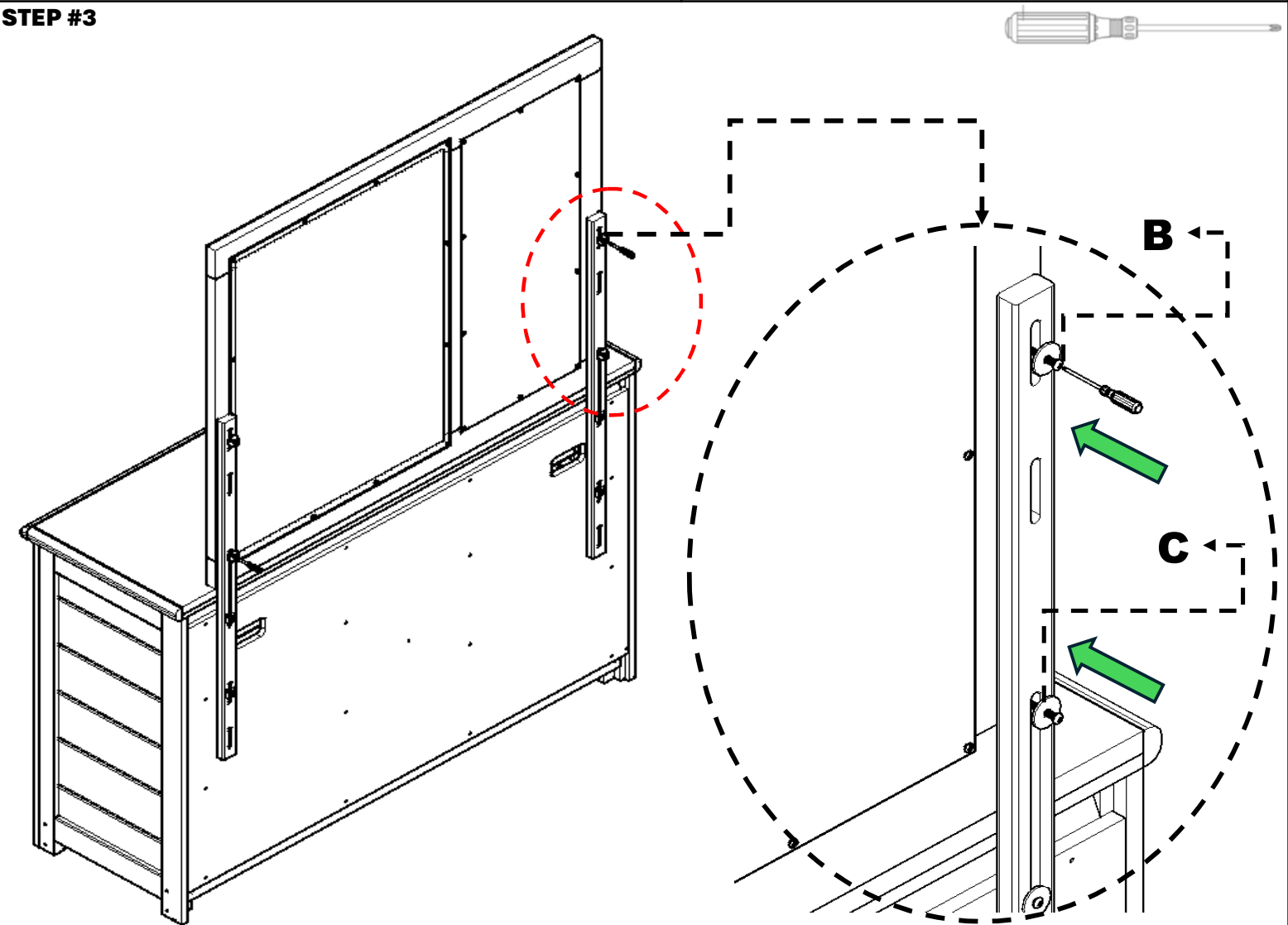
Place mirror on a flat surface front down, then remove all four screws and washers.

STEP #2



Assemble wood supports on the back of dresser

STEP #3



Attach mirror to dresser **MAKE SURE ALL SCREWS ARE TIGHTENED COMPLETELY** (Do not over tighten)