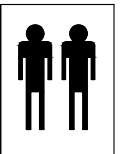
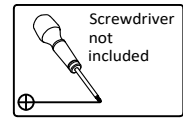
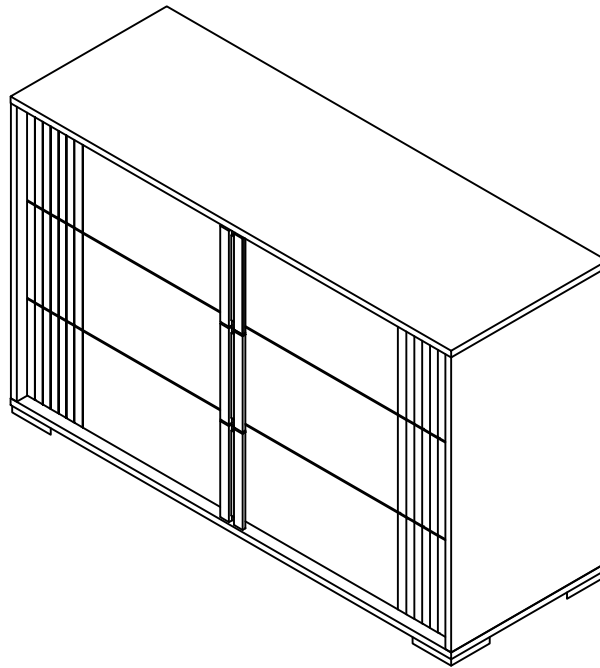
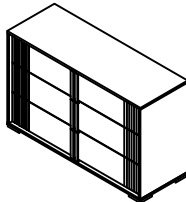


# VALENTINA Kids 3 DRAWER DRESSER



Anti Tip  
Hardware  
included

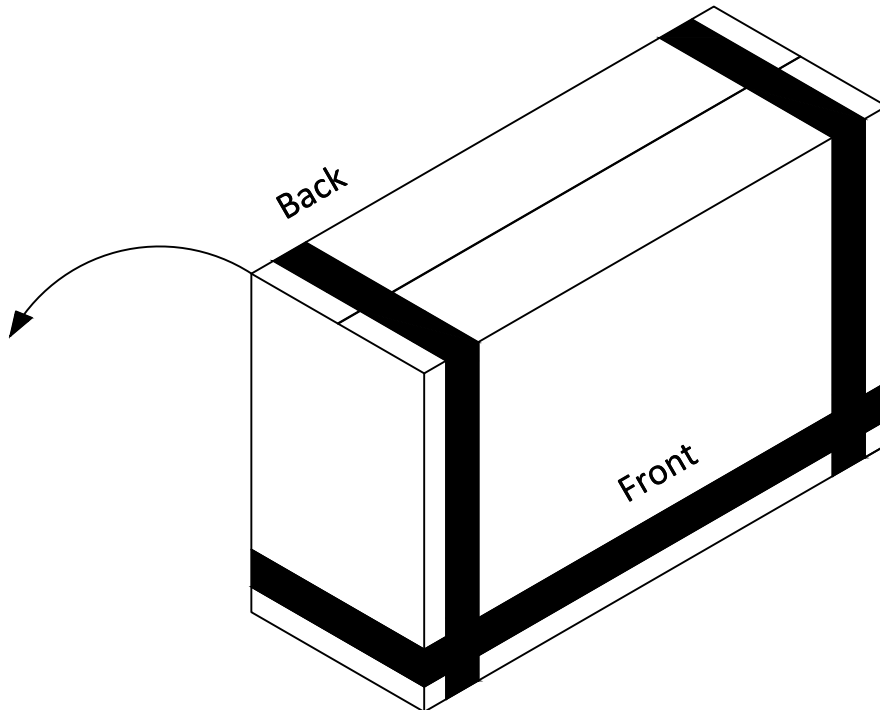
## FIBI

34175302 - STYLE: 7530			
.			
NO.	Item description	IMAGE	QTY
1	3 DRAWER DRESSER		1

DO NOT SUBSTITUTE PARTS. PLEASE CONTACT  
YOUR RETAIL STORE OR [WWW.ROOMSTOGO.COM](http://WWW.ROOMSTOGO.COM)  
WITH SERVICE OR PARTS REPLACEMENT.

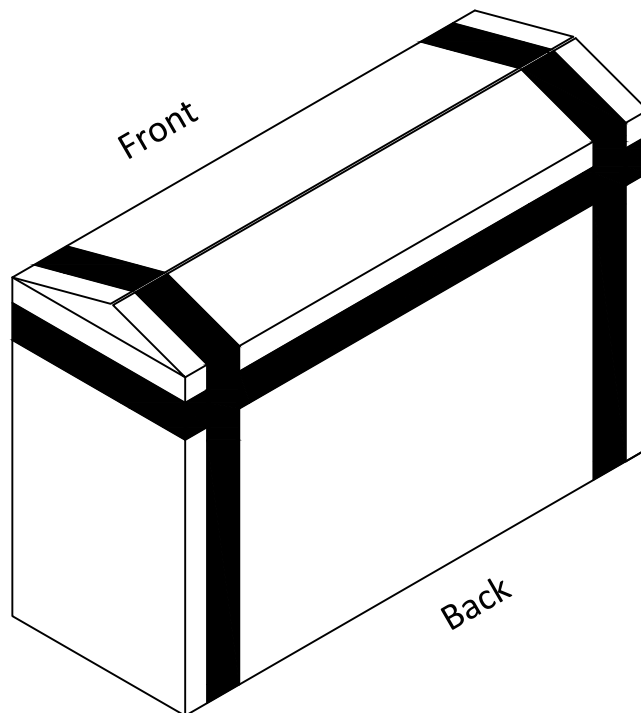
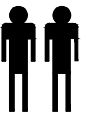
# Assembly Instructions

- 1 Rotate 90° twice counter-clockwise



- 2 Open the carton using a cutter

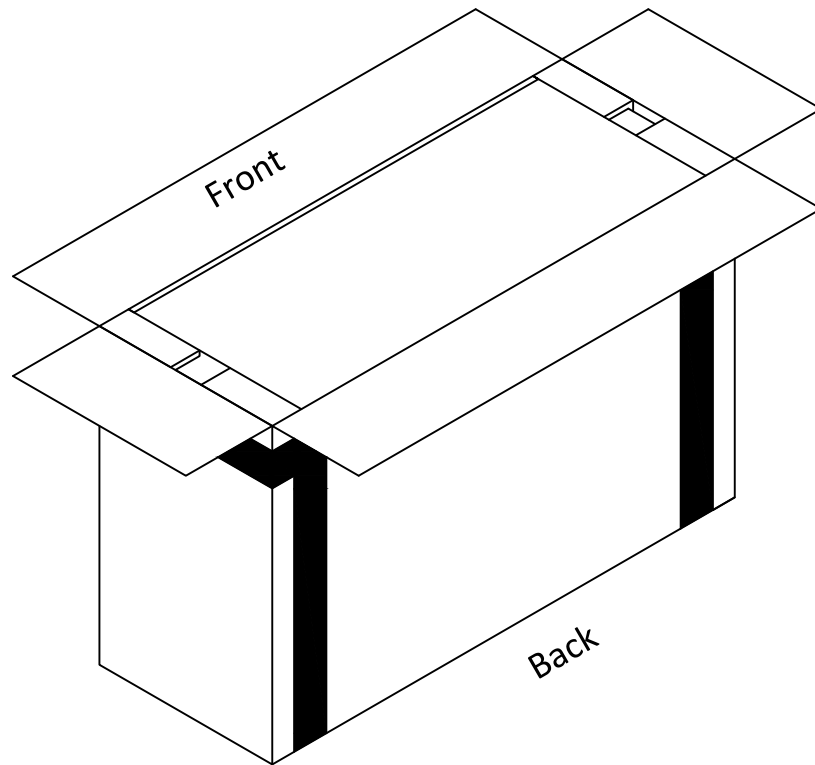
Cutter  
not  
included



# Assembly Instructions

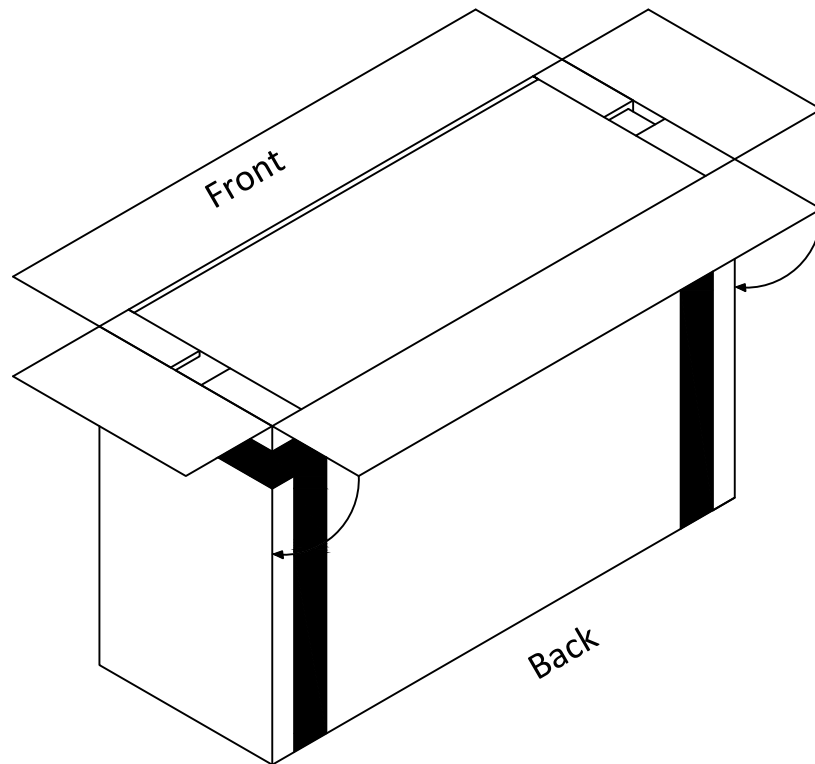
3

Open the carton fold



4

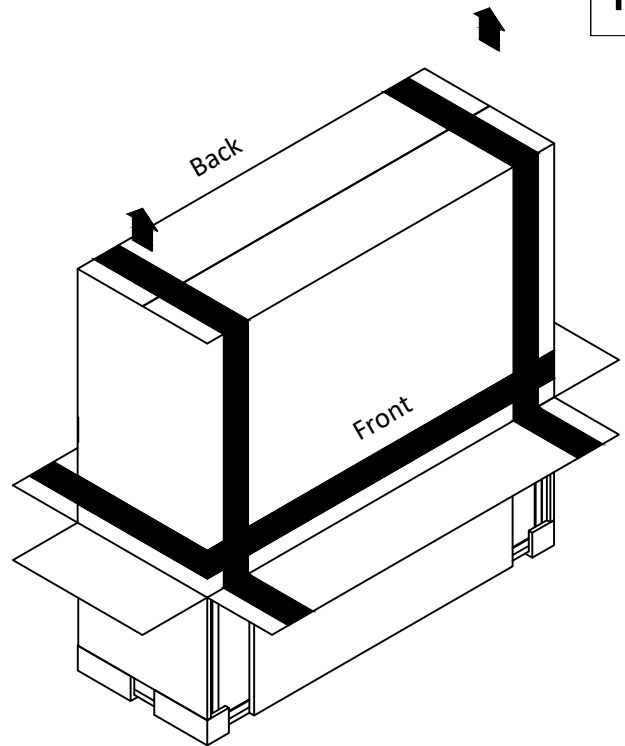
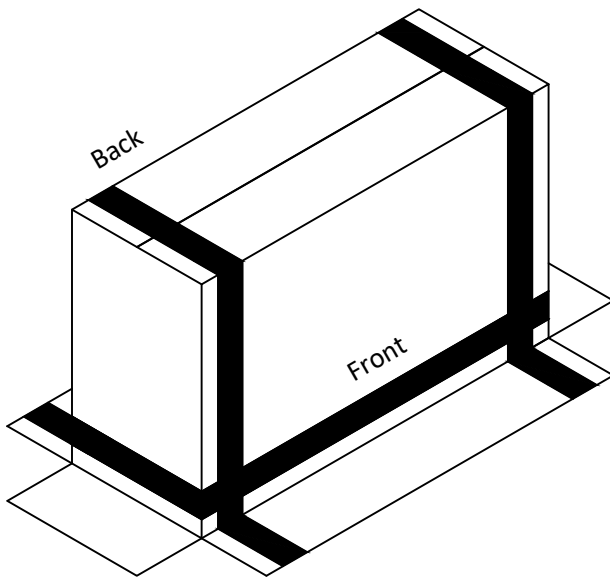
Rotate 90° twice -clockwise



# Assembly Instructions

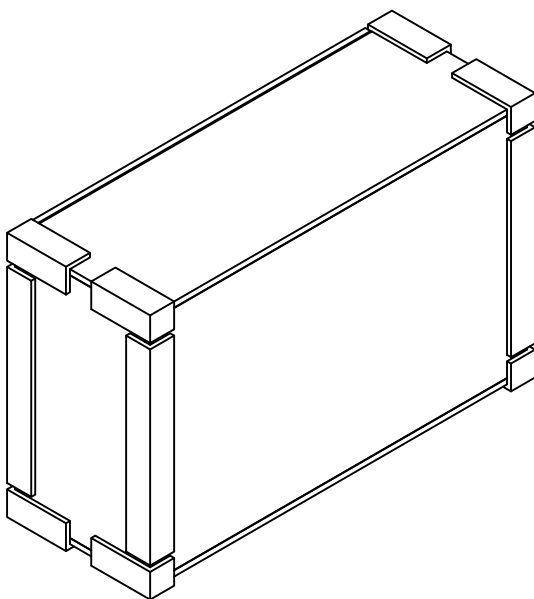
5

Lift the carton off



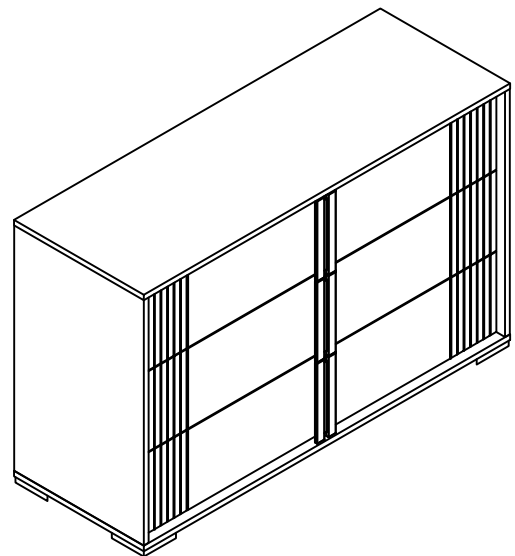
6

Remove all the packaging



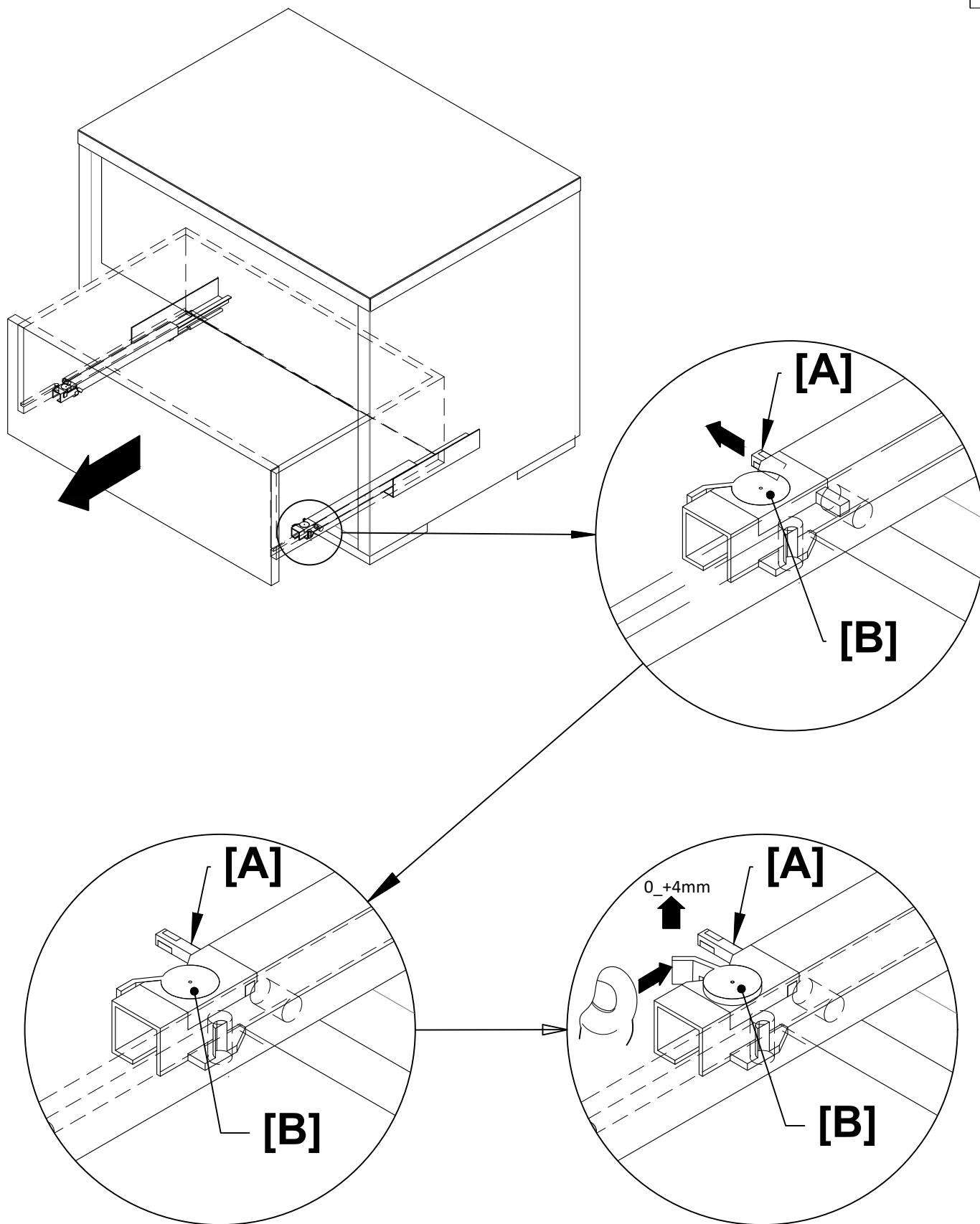
7

Dresser ready to work



# Assembly Instructions-Drawer adjustment

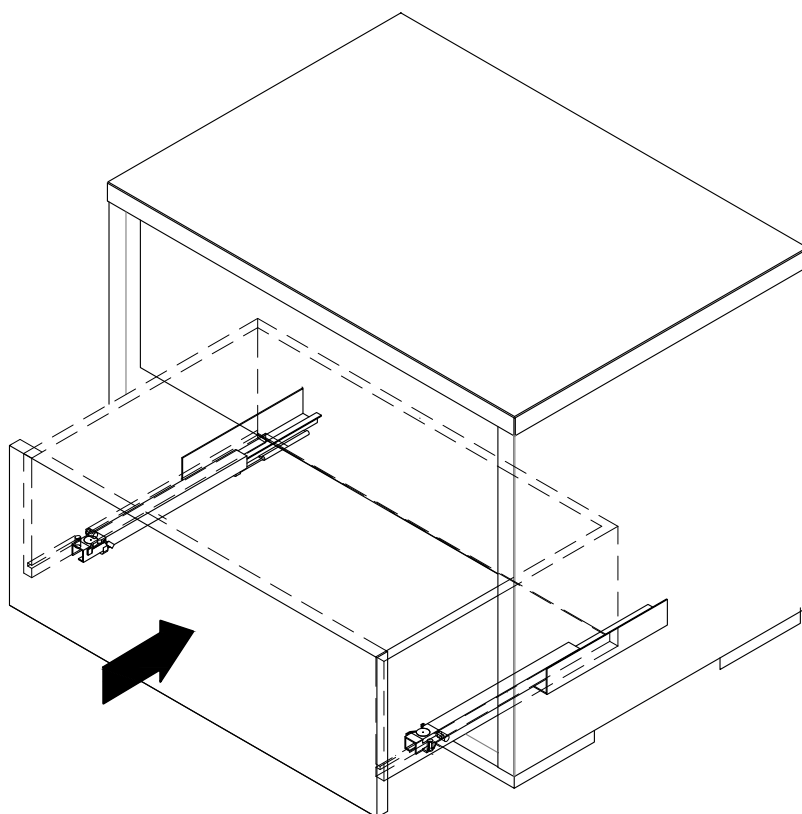
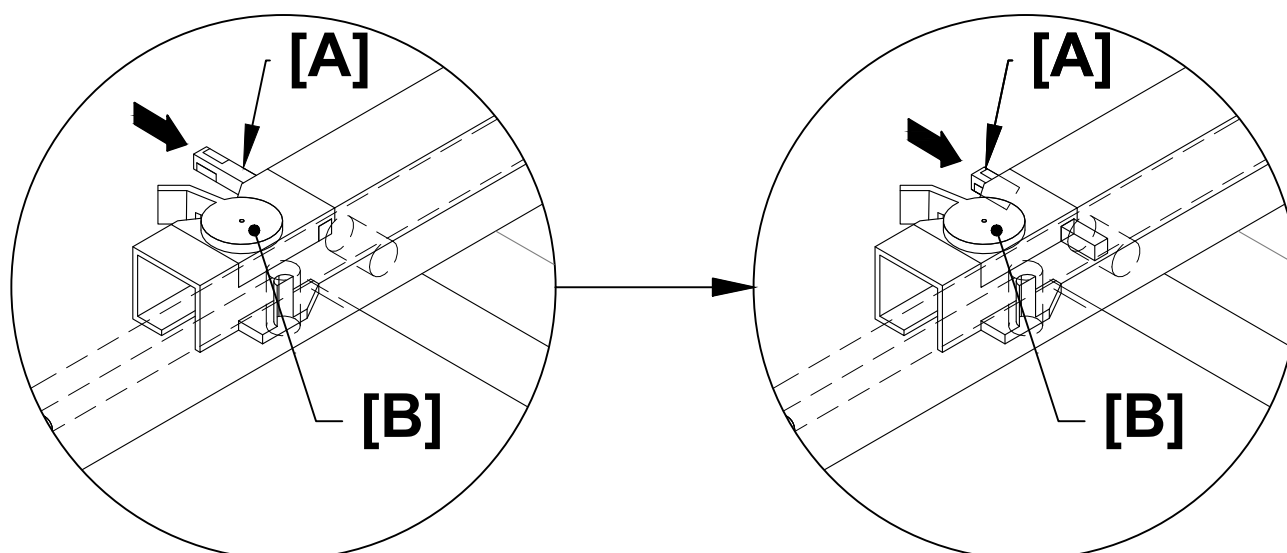
- 8 Open and unhook the [A] fixing pin under the drawer.  
Turn the [B] camme (0-4mm max).



# Assembly Instructions-Drawer adjustment

9

Close and control the right space between drawers and repeat in left side ( if necessary ).  
If it is correct, open and hook [A] fixing pin under the drawer.  
Close the drawer. If necessary, repeat these procedures even on the other drawers.

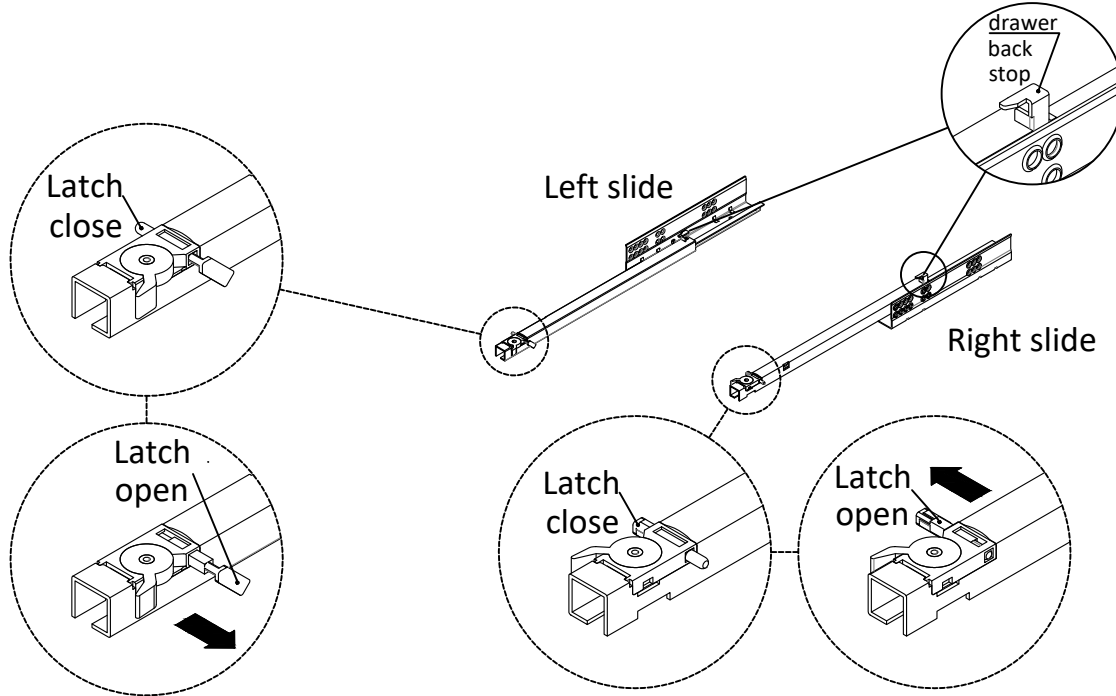


# Assembly Instructions-Drawer adjustment

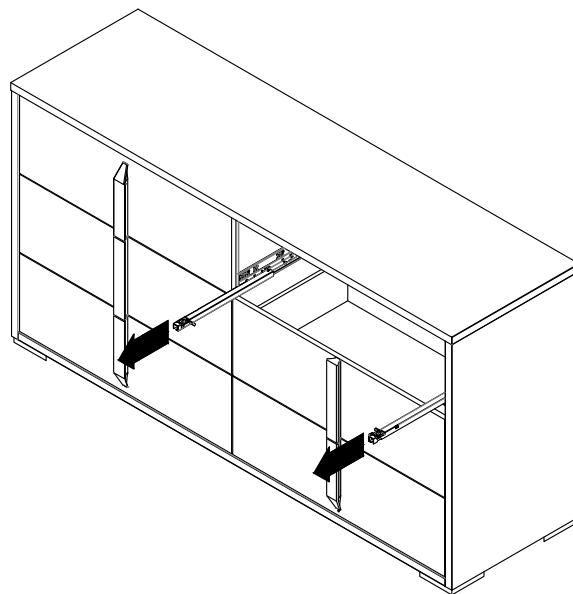
If a drawer does not close properly, or get's stuck, the most likely cause is that the drawer came off the "glide".  
This is not a defect and can easily be corrected. Remove all contents of the drawer.



- 10** If the drawer comes off the glide,visulay inspect underneath the drawer.  
Make sure you pull the latch into the "open" position on both drawer glides.

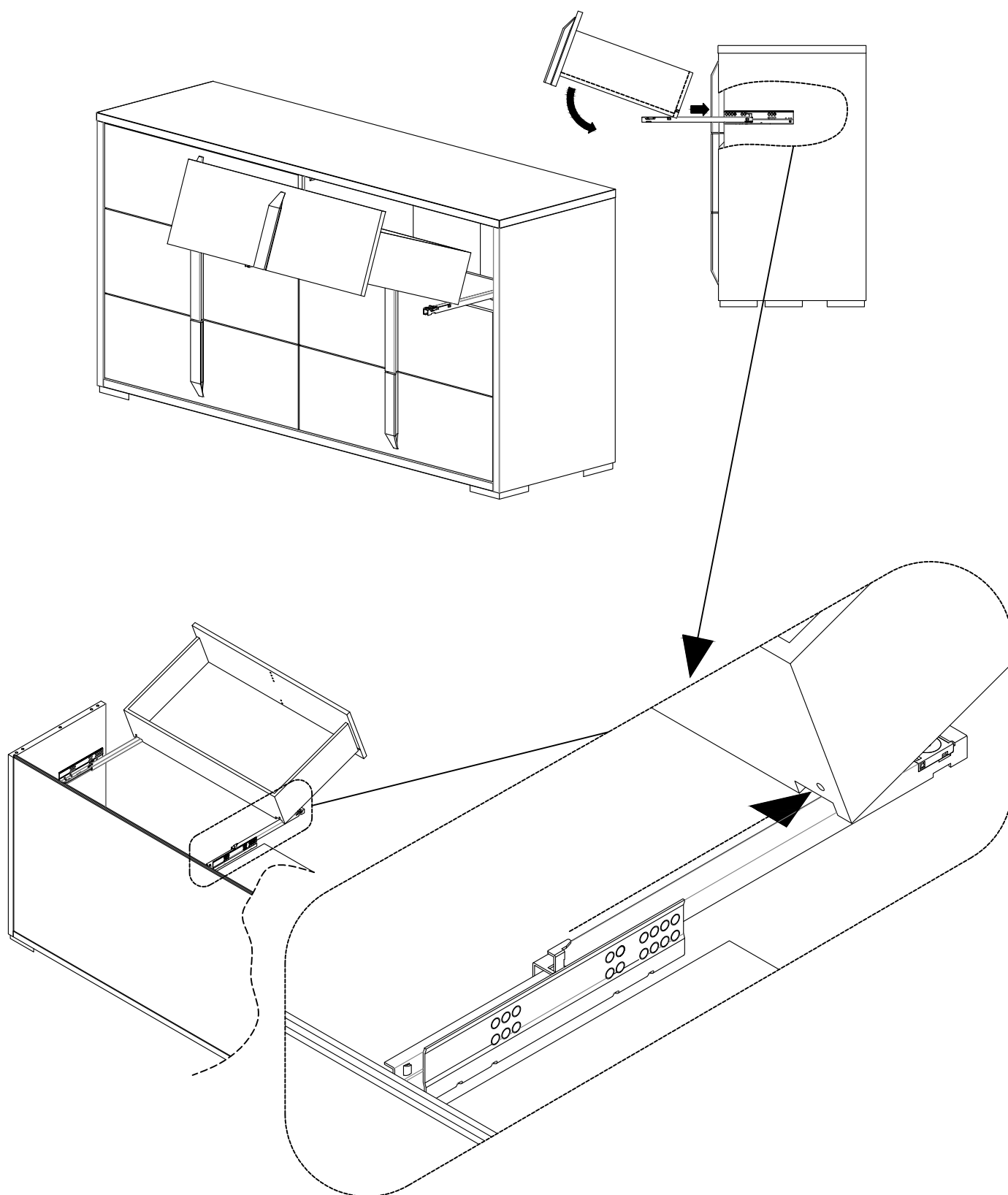


- 11** Pull the glides out with latches.



# Assembly Instructions-Drawer adjustment

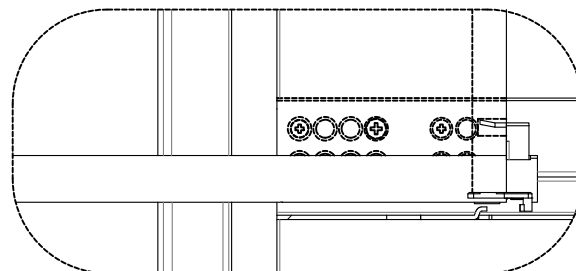
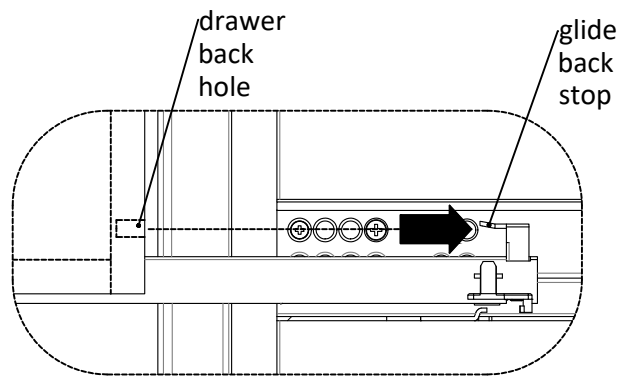
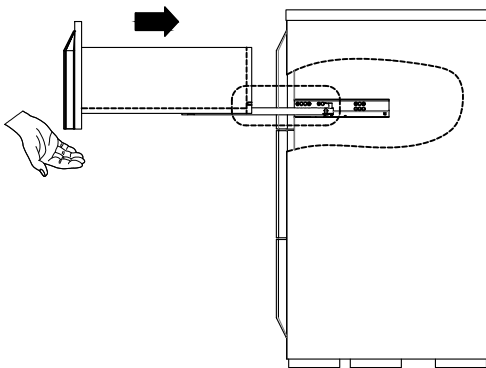
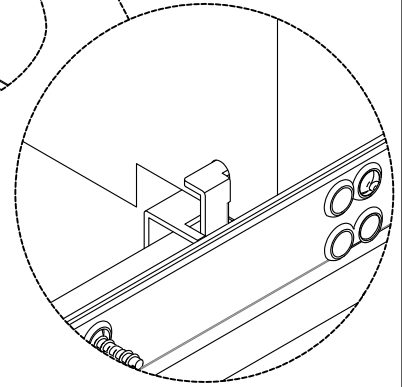
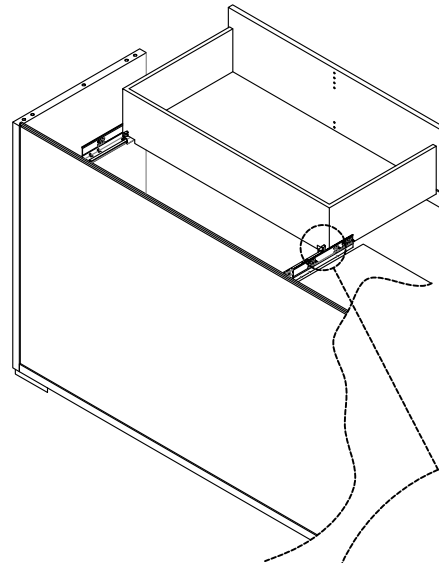
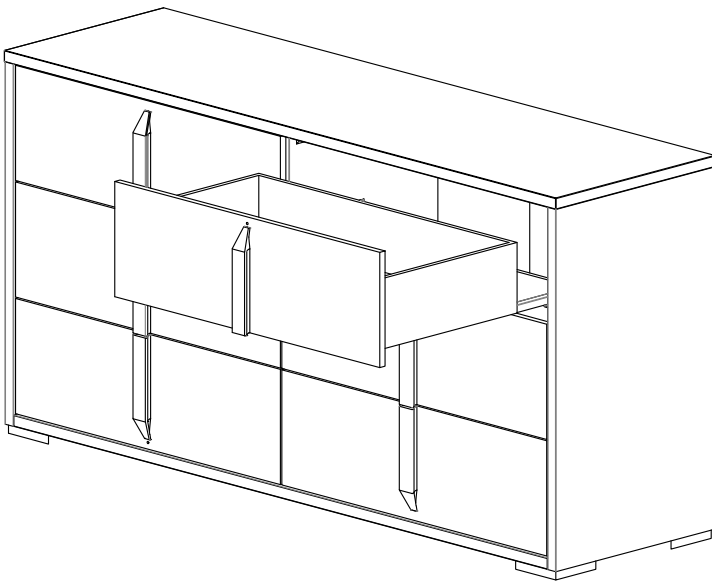
12 Rest drawer back on the glides and slide it inwards.





# Assembly Instructions-Drawer adjustment

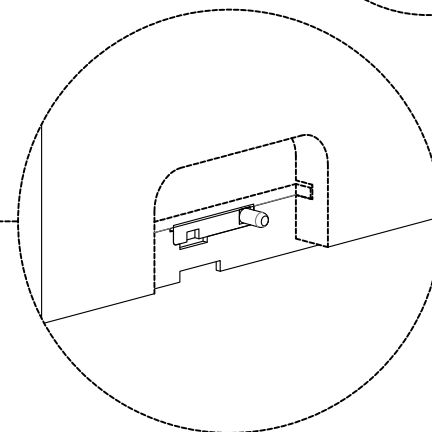
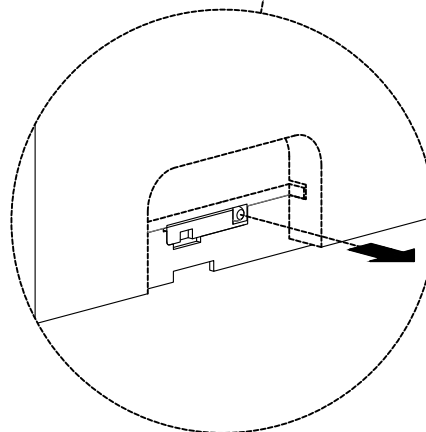
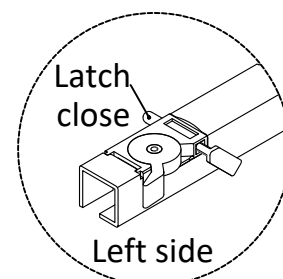
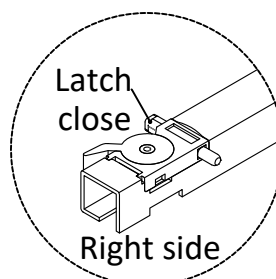
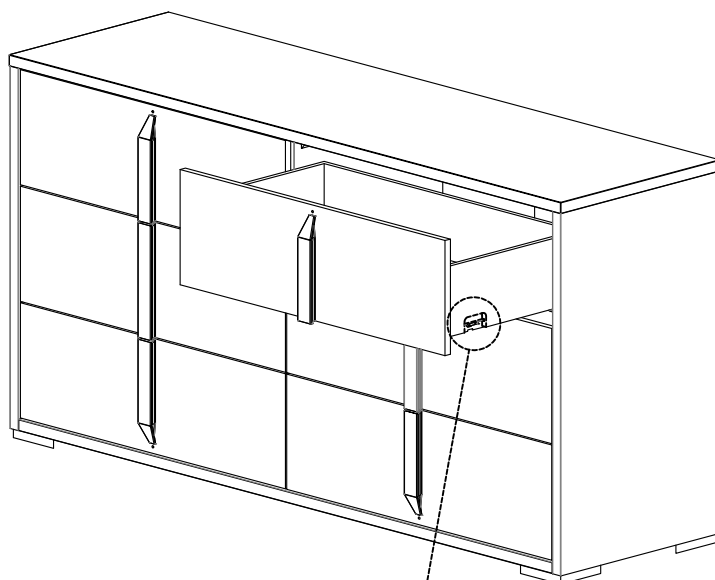
- 13 Make sure the drawer back stop is inserted in the back of the drawer, into the lower drawer hole.



# Assembly Instructions-Drawer adjustment

14

Push the latch into the lock position.

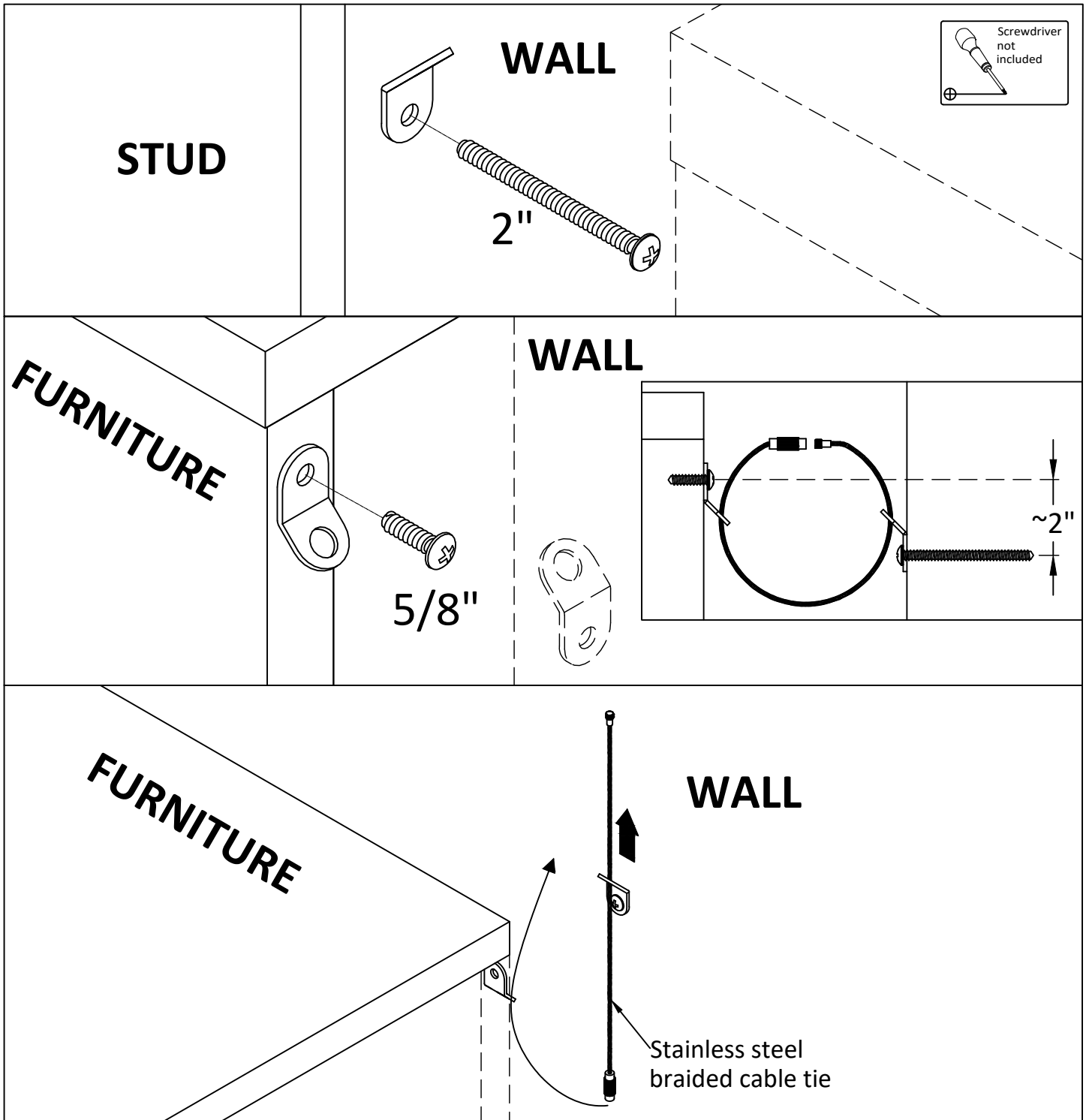


# Assembly Instructions

15

This anti-tip device must be attached to a wall stud using the 2" screw enclosed.

- 1-Attach a bracket securely to back top rail or bak top edge of the furniture using the 5/8 " screw provided, through the smaller hole in the bracket.
- 2-Locate the other bracket on the wall over a stud and 2 inches below the mounting bracket secured to the back of your unit. Attached to the wall stud using the 2"screw provided, through the smaller hole in the bracket.
- 3-Place the furniture into position so mounting bracket are vertically in line.
- 4-Lace the threaded end of the restraint cable through the larger hole in each mounting bracket.



# Assembly Instructions

- 16** 5-Bring both ends together and rotate the thumb nut onto the threaded end until tight.  
6-Confirm that the cable is securely laced and locked.

