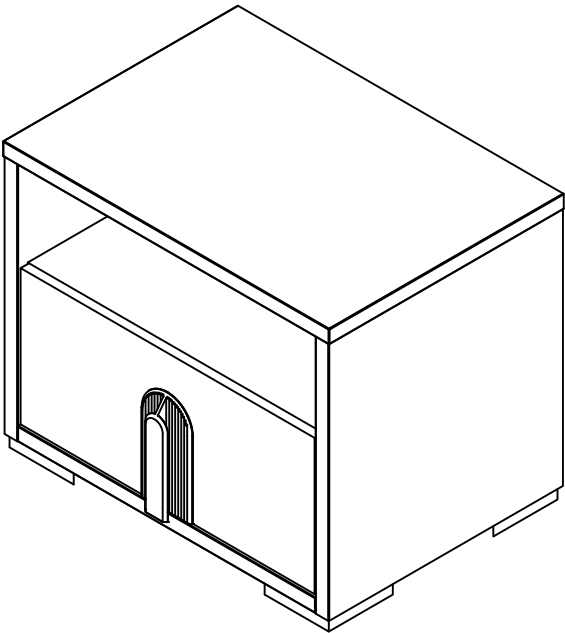
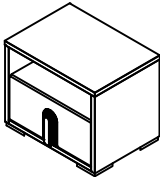


STAR WARS™
1 DRAWER NIGHTSTAND



FIBI

SKU#34275405- STYLE: 7540			
.			
NO.	Item description	IMAGE	QTY
1	1 DRAWER NIGHTSTAND BLACK / PEWTER LACQUER		1

DO NOT SUBSTITUTE PARTS. PLEASE CONTACT
YOUR RETAIL STORE OR WWW.ROOMSTOGO.COM
WITH SERVICE OR PARTS REPLACEMENT.

©&™ Lucasfilm Ltd

This product is manufactured by FIBI for **ROOMS TO GO | KIDS**

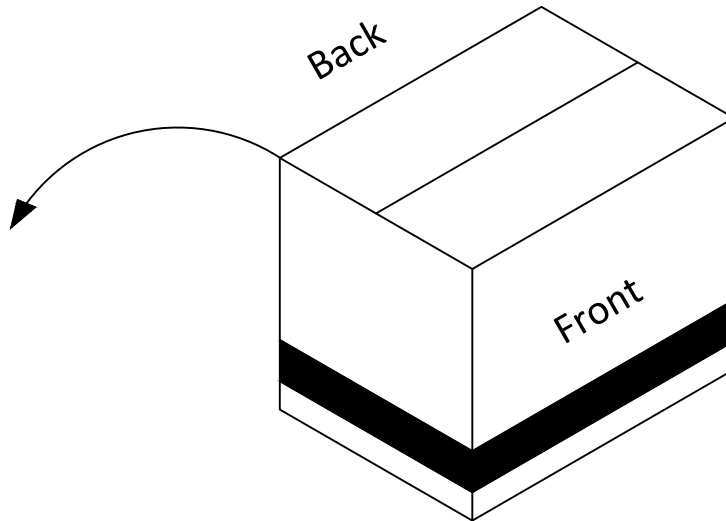
Version 2 - 2024/07/19

Page 1/10

Assembly Instructions

1

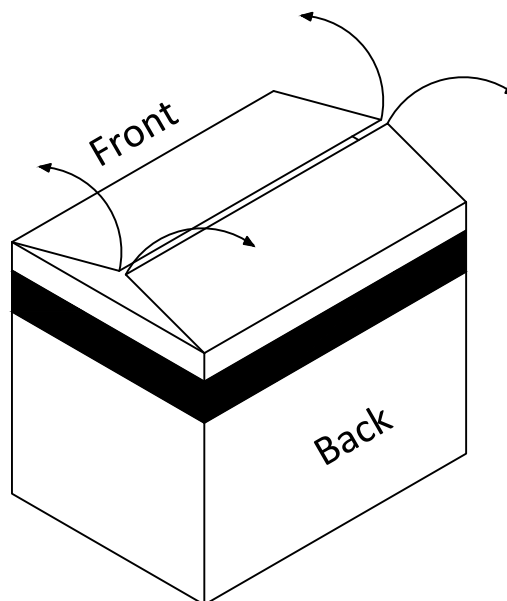
Rotate 90° twice counter-clockwise



2

Open the carton using a cutter

Cutter
not
included



©&™ Lucasfilm Ltd

This product is manufactured by FIBI for **ROOMS TO GO | KIDS**

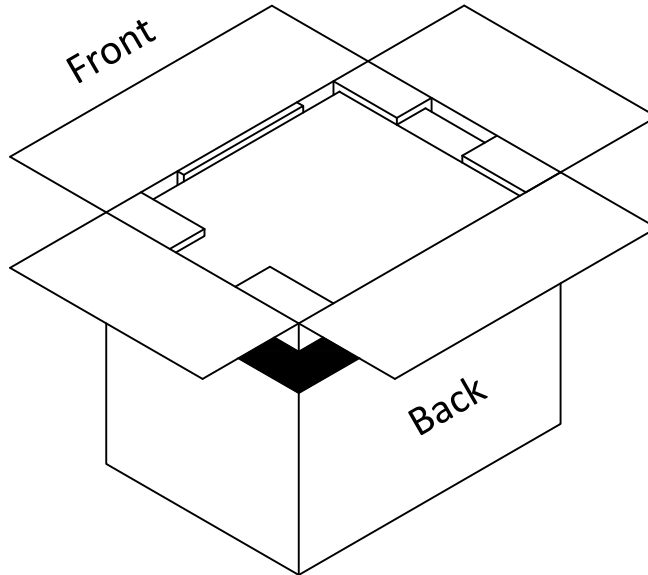
Version 2 - 2024/07/19

Page 2/10

Assembly Instructions

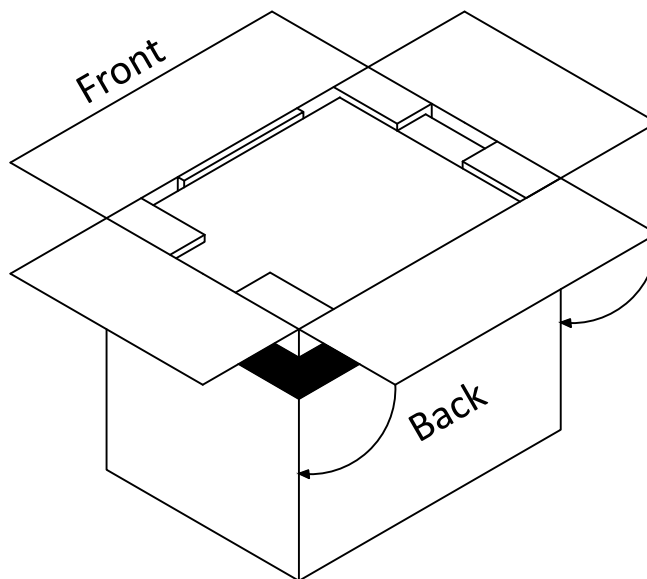
3

Open the carton fold



4

Rotate 90° twice -clockwise



©&™ Lucasfilm Ltd

This product is manufactured by FIBI for **ROOMS TO GO | KIDS**

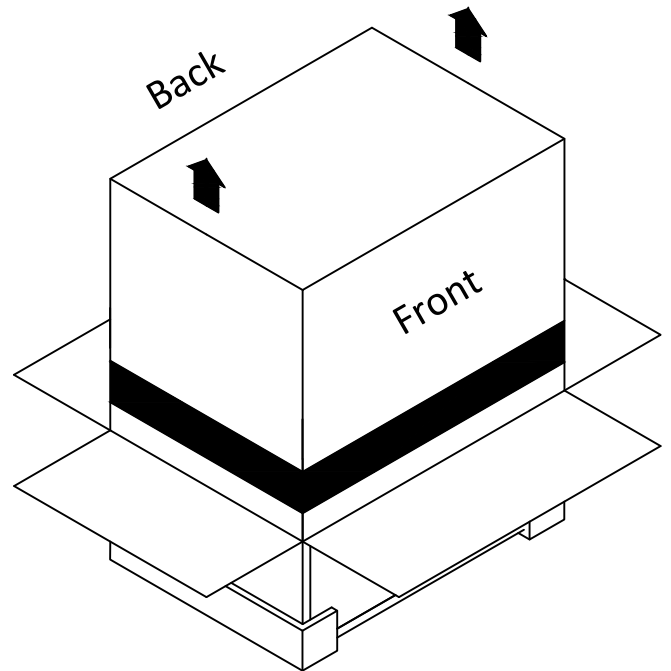
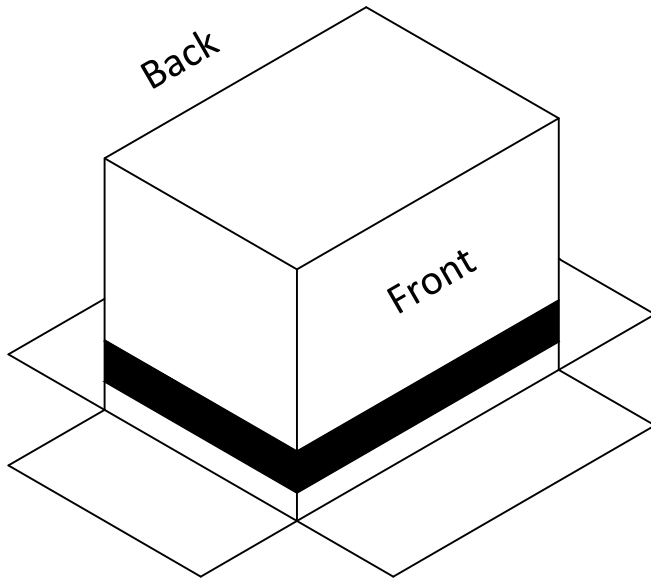
Version 2 - 2024/07/19

Page 3/10

Assembly Instructions

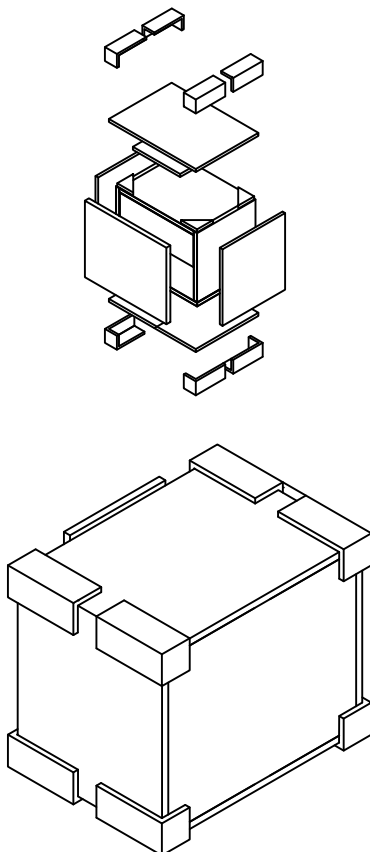
5

Lift the carton off



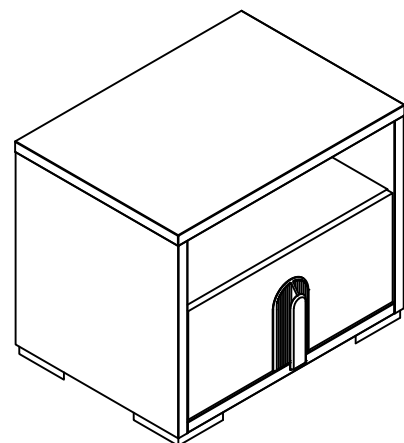
6

Remove all the packaging



7

Nightstand ready to work



©&™ Lucasfilm Ltd

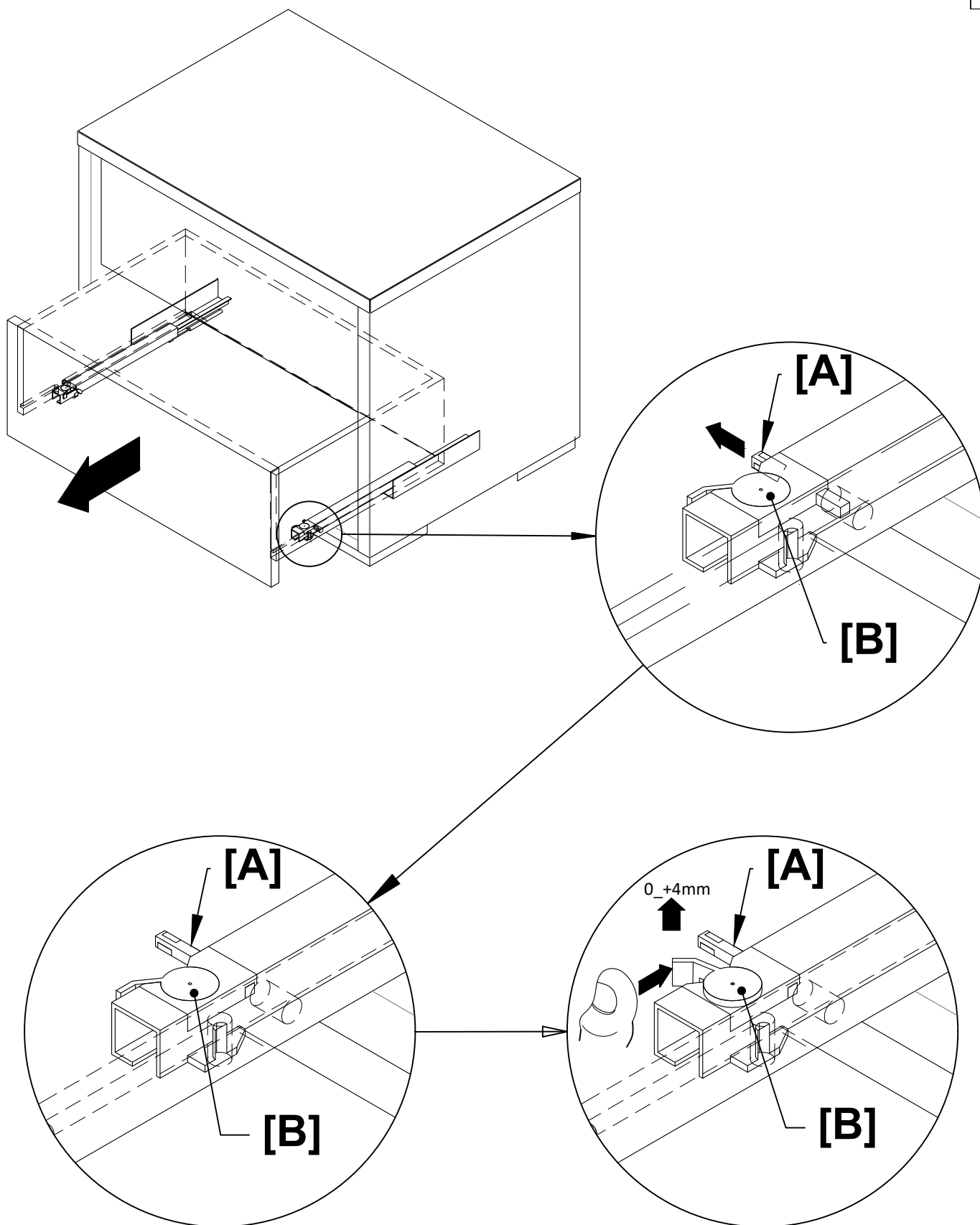
This product is manufactured by FIBI for **ROOMS TO GO | KIDS**

Version 2 - 2024/07/19

Page 4/10

Assembly Instructions-Drawer adjustment

- 8 Open and unhook the [A] fixing pin under the drawer.
Turn the [B] camme (0-4mm max).



©&™ Lucasfilm Ltd

This product is manufactured by FIBI for **ROOMS TO GO | KIDS**

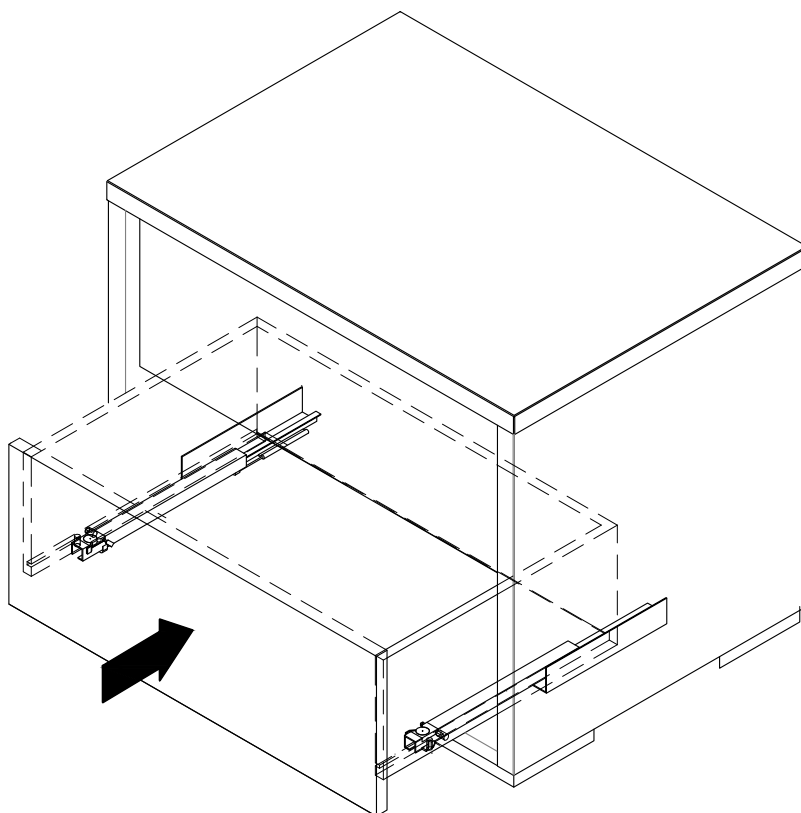
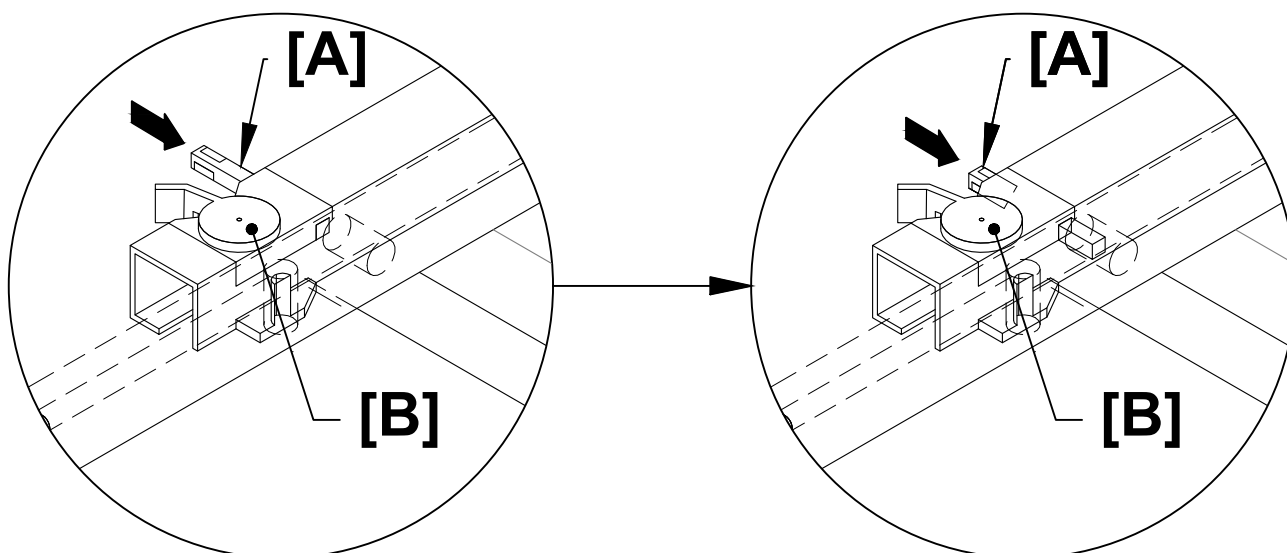
Version 2 - 2024/07/19

Page 5/10

Assembly Instructions-Drawer adjustment

9

Close and control the right space between drawers and repeat in left side (if necessary).
If it is correct, open and hook [A] fixing pin under the drawer.
Close the drawer. If necessary, repeat these procedures even on the other drawers.



© &™ Lucasfilm Ltd

This product is manufactured by FIBI for **ROOMS TO GO | KIDS**

Version 2 - 2024/07/19

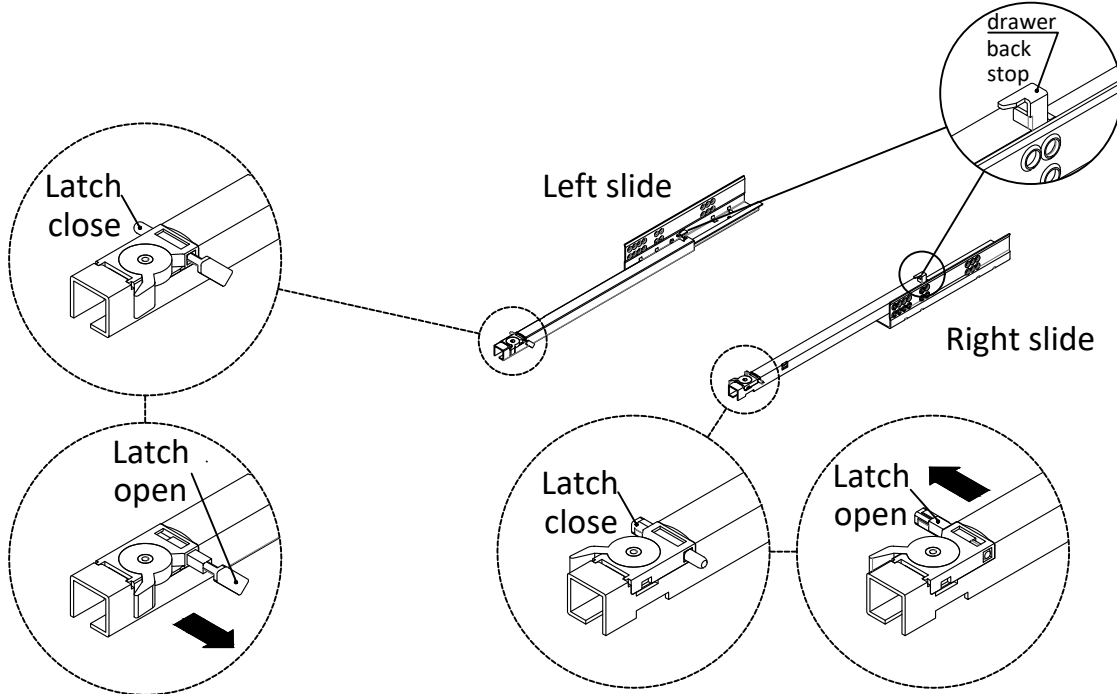
Page 6/10

Assembly Instructions-Drawer adjustment

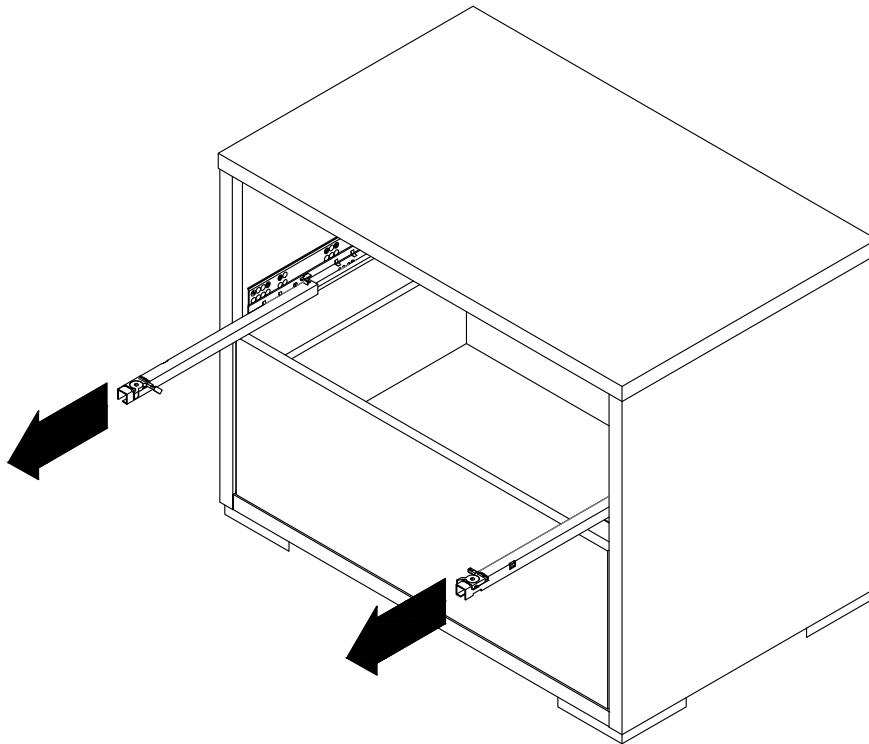
If a drawer does not close properly, or get's stuck, the most likely cause is that the drawer came off the "glide".
This is not a defect and can easily be corrected. Remove all contents of the drawer.



- 10** If the drawer comes off the glide,visulay inspect underneath the drawer.
Make sure you pull the latch into the "open" position on both drawer glides.



- 11** Pull the glides out with latches.



© &™ Lucasfilm Ltd

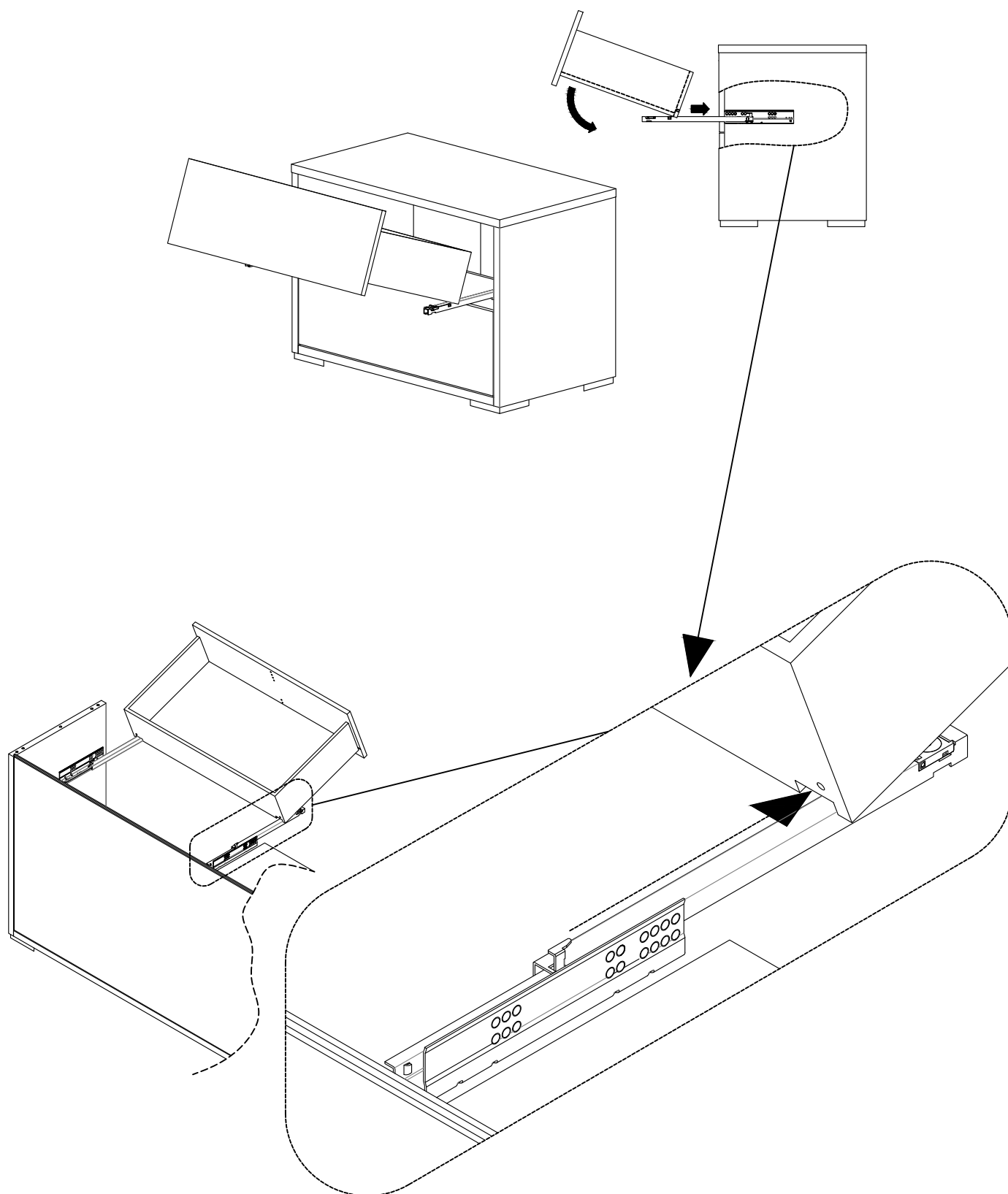
This product is manufactured by FIBI for **ROOMS TO GO | KIDS**

Version 2 - 2024/07/19

Page 7/10

Assembly Instructions-Drawer adjustment

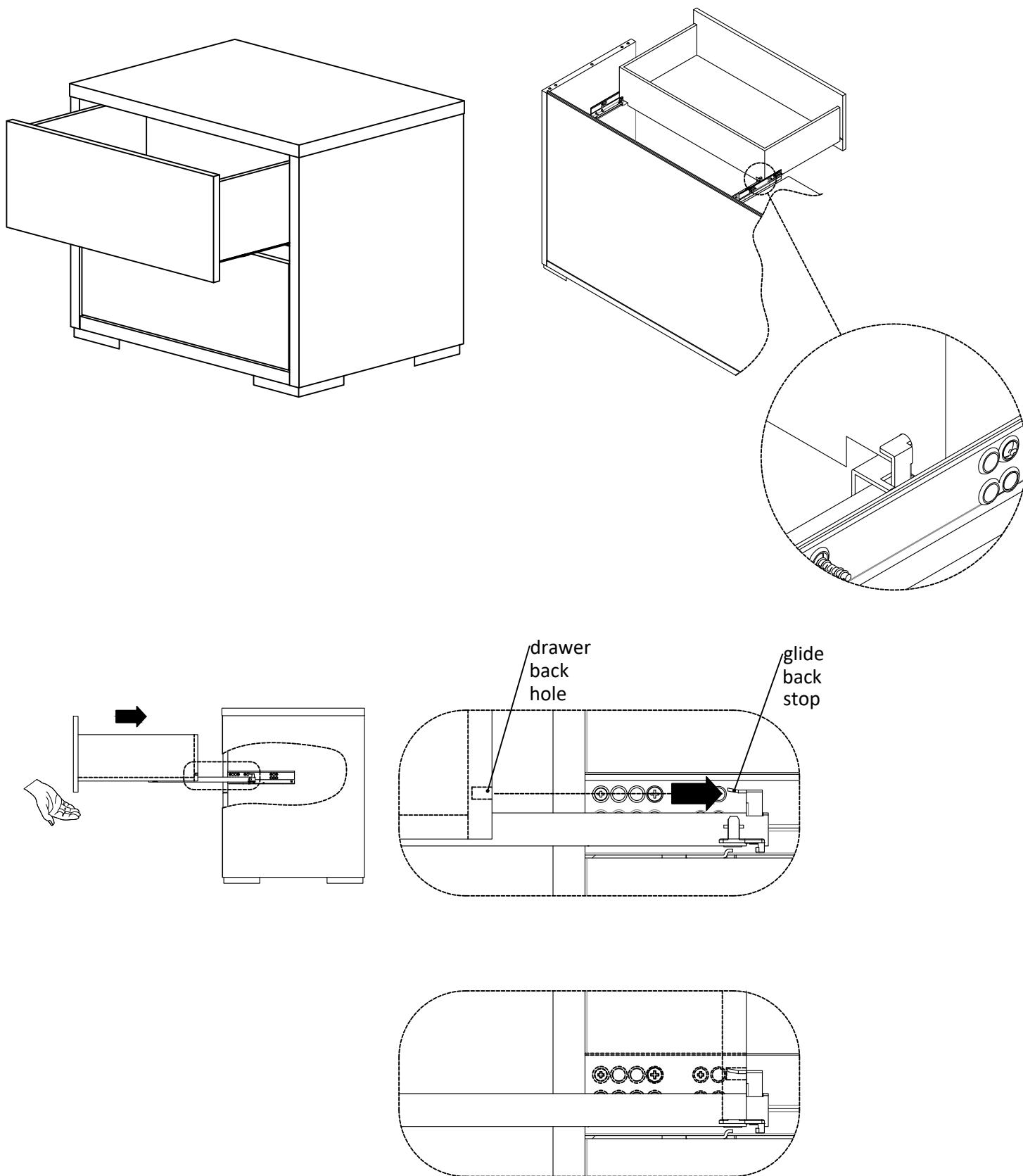
12 Rest drawer back on the glides and slide it inwards.



© &™ Lucasfilm Ltd

Assembly Instructions-Drawer adjustment

- 13 Make sure the drawer back stop is inserted in the back of the drawer, into the lower drawer hole.



©&™ Lucasfilm Ltd

This product is manufactured by FIBI for **ROOMS TO GO | KIDS**

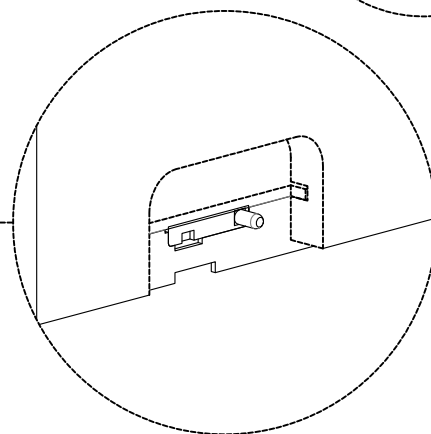
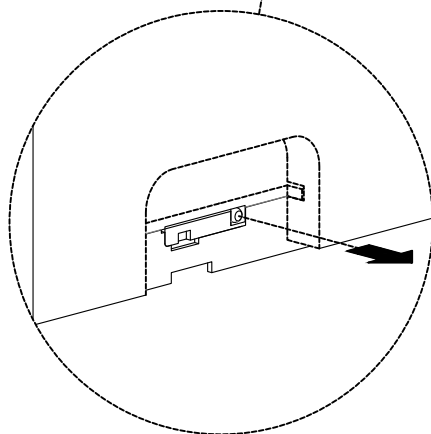
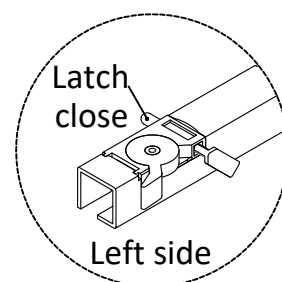
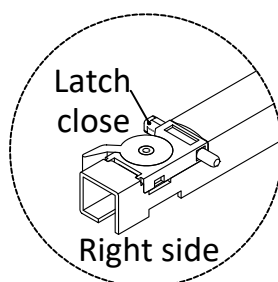
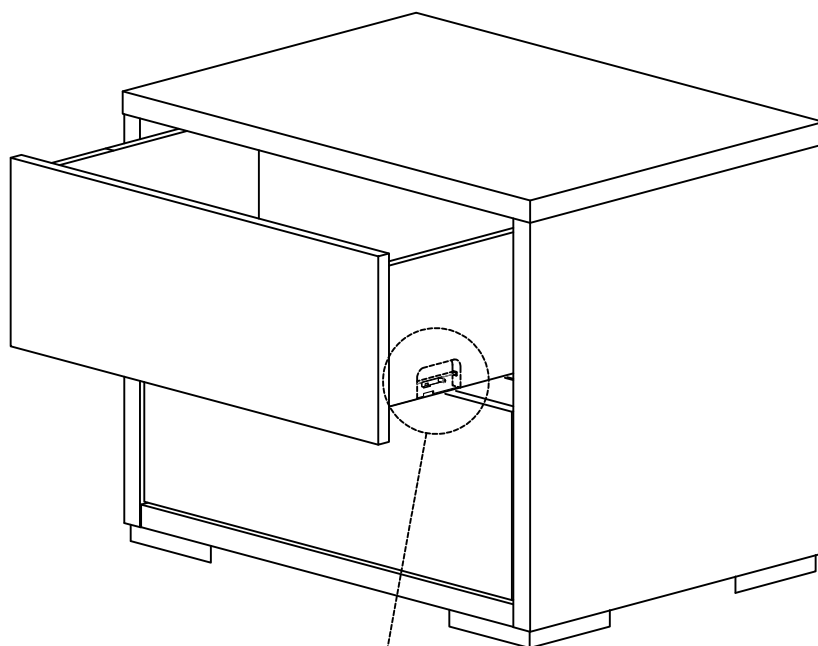
Version 2 - 2024/07/19

Page 9/10

Assembly Instructions-Drawer adjustment

14

Push the latch into the lock position.



©&™ Lucasfilm Ltd

This product is manufactured by FIBI for **ROOMS TO GO | KIDS**

Version 2 - 2024/07/19

Page 10/10