

Assembly Instruction

Irvine Mini Vanity with Stool

ITEM # V-13260-7-VNSP / V-13260-8-VNSP

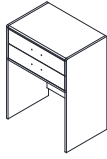
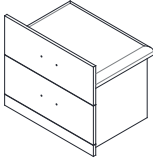
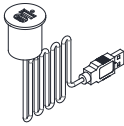
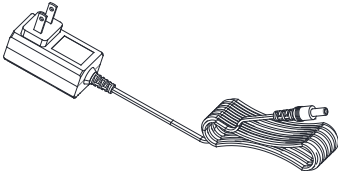
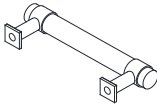
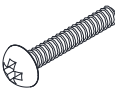
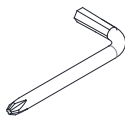


Assembly Instruction for

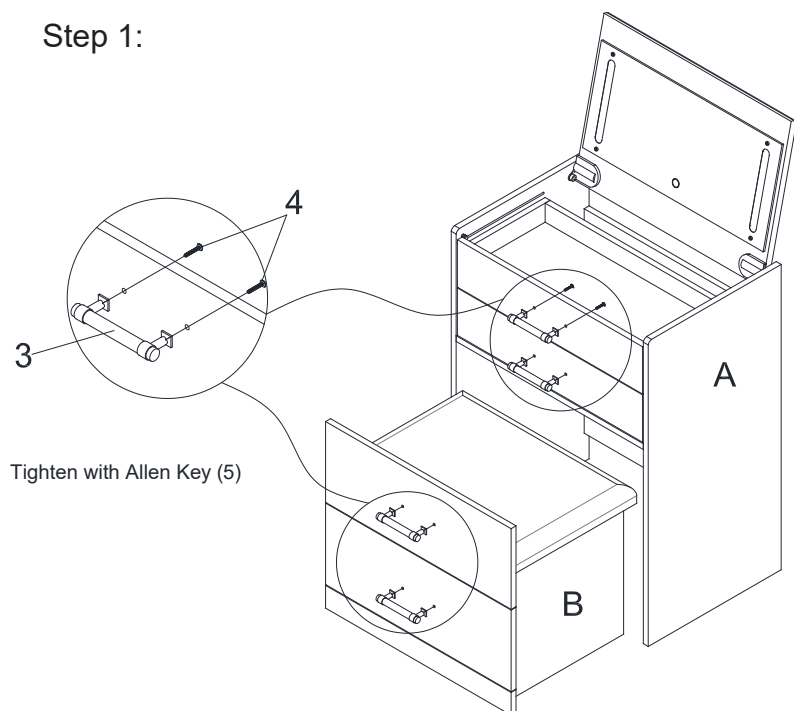
Item: V-13260-7-VNSP / V-13260-8-VNSP

CAUTION: Please read instructions thoroughly before unpacking assembly parts.

1. Be sure to check all packing materials carefully for small parts that may have come loose inside the carton during shipment.
2. Please put all parts on a non-abrasive floor before assembly, and follow the assembly steps to assemble your newly purchased product correctly and efficiently.
3. Please do not tighten screws or bolts until each step is completed or instructed.
4. Please do not over tighten screws or bolts.

PART LIST				
No.	SKETCH	PART DESC	CODE	Q'TY
A		VANITY		1
B		STOOL		1
1		USB PORT	PV-13260-USB	1
2		ADAPTOR	PV-13260-ADT	1
3		HANDLE	PV-13260-HDS	4
4		HANDLE BOLT 5/32" x 22mm	PV-13260-VNSPHW	8
5		ALLEN KEY 4mm		1

Step 1:



Step 2:

