

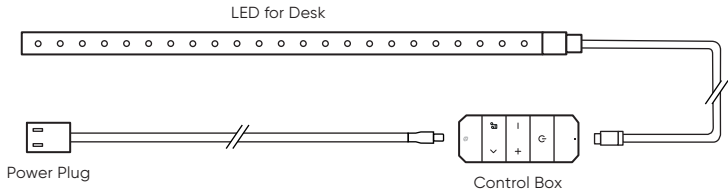
This product is manufactured by Nanoleaf
for ROOMS TO GO® | KIDS

SW Desk

Quick Start Guide

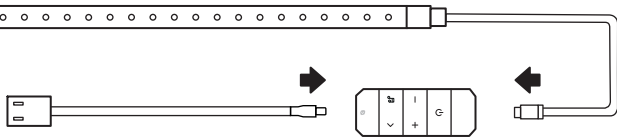


Components

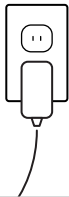


Installation

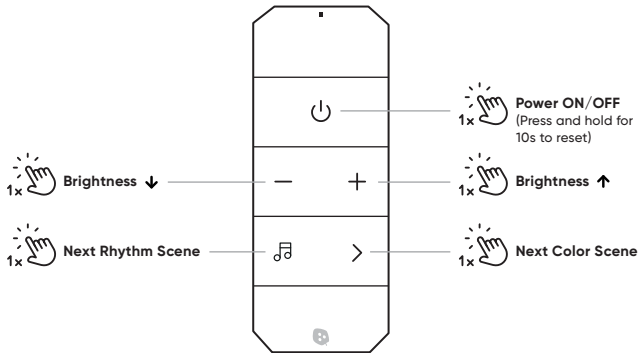
1



2



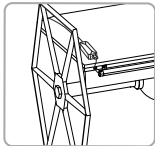
Control



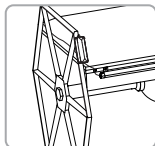
Control Box Placement Options:

A. Place it on the desk

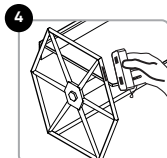
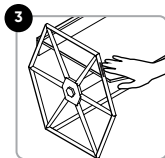
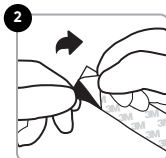
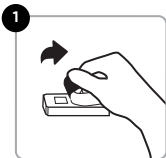
B. Attach it to the side rail



or



Option B Steps



Pairing



To download the **Nanoleaf App** on your smartphone, scan the respective QR codes.



Nanoleaf Desktop App

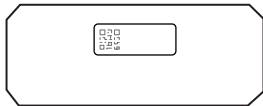
To use Screen Mirror feature, please download the Nanoleaf desktop app on your computer by visiting the following link:

<https://nanoleaf.me/en-US/integration/desktop-app/>

Desktop app requires a min. of Windows 10 & macOS 12.

To ensure a smooth pairing process, please make sure you have the following things ready:

- Your iOS or Android device with Bluetooth and Wifi (2.4GHz) is **ON**
- Requires iOS 15.4+ or Android 9+
- Pairing Code found on the back of the controller.



1. Open the Nanoleaf app and tap on "Add Device."
2. Select the "My Devices" tab, tap the "+" to add a new device, and the camera will automatically open.
3. You can choose to scan the pairing QR code, enter the pairing code manually, or use NFC for pairing.
4. When you manually enter the QR code, select "SIQRTG Desk" as your product and tap "Start Pairing."
5. Once the pairing is done, your product should now be connected and ready for use!



EN **WARNINGS & CAUTIONS** READ AND FOLLOW ALL SAFETY INSTRUCTIONS Please read this safety information carefully and keep this document for future reference. Help articles and customer support is always available at <https://go.nanoleaf.me/support>. This Nanoleaf® product is not designed, certified, nor intended for use in: enclosed locations that limit the flow of air and/or trap heat which contributes to an environment temperature over 40 degrees Celsius; regions or countries other than that in which the product was intended for and certified for sale in. When using this Nanoleaf® product: Do not open or disassemble the device, as this will void the warranty and make the product unsafe for use. If adhesive tape is a component of this product, please note that it is not designed to be used with unpainted brick wall, wallpaper, uneven/textured surfaces, or highly porous surfaces. Do not connect this device to another manufacturer's product. The flexible cable and power supply cannot be replaced by another third party product. If the cable is damaged, the entire controller and power supply should only be replaced with original equipment manufactured by Nanoleaf®. Using any non-approved replacement component will void the warranty and may present a serious safety hazard. This Nanoleaf® product is primarily intended for decorative use, with RGBW output function that can dim.

CLEANING AND MAINTENANCE Do not clean the device with liquid or sprays when it is connected to power. Clean with a soft dry cloth, and do not use harsh cleaning agents. Manage in accordance with disposal laws in your area.

FREQUENCY RANGE Bluetooth, Thread: 2400-2483.5 MHz <10dBm

FCC STATEMENT This device complies with part 15 of the FCC Rules. Operation is subject to the following two conditions: (1) This device may not cause harmful interference, and (2) this device must accept any interference received, including interference that may cause undesired operation. This equipment should be installed and operated with minimum distance of 20 cm between the radiator and your body.

NOTE This equipment has been tested and found to comply with the limits for a Class B digital device, pursuant to part 15 of the FCC Rules. These limits are designed to provide reasonable protection against harmful interference in a residential installation. This equipment generates, uses and can radiate radio frequency energy and, if not installed and used in accordance with the instructions, may cause harmful interference to radio communications. However, there is no guarantee that interference will not occur in a particular installation. If this equipment does cause harmful interference to radio or television reception, which can be determined by turning the equipment off and on, the user is encouraged to try to correct the interference by one or more of the following measures:

- Reorient or relocate the receiving antenna.
- Increase the separation between the equipment and receiver.
- Connect the equipment into an outlet on a circuit different from that to which the receiver is connected.
- Consult the dealer or an experienced radio/TV technician for help.

Any changes or modifications not expressly approved by the grantee of this device could void the user's authority to operate the device.

FR **AVERTISSEMENTS ET MISES EN GARDE** Veuillez lire attentivement ces informations de sécurité et conserver ce document pour toute référence ultérieure. Les articles d'aide et le support client sont toujours disponibles sur <https://go.nanoleaf.me/support>. Les produits Nanoleaf® ne sont ni conçus, ni certifiés, ni destinés à être utilisés: dans des endroits fermés qui limitent le flux d'air et/ou piègent la chaleur qui contribue à une température ambiante supérieure à 40 degrés Celsius; dans les régions ou pays autres que ceux pour lesquels le produit est destiné et certifié pour la vente. Lors de l'utilisation de ce produit Nanoleaf: N'ouvrez ni ne démontez l'appareil, car cela annulerait la garantie et rendrait le produit d'usage dangereux. Si le ruban adhésif est un composant de ce produit, veuillez noter qu'il n'est pas conçu pour être utilisé sur un mur de briques non peint, du papier peint, des surfaces inégales/texturées ou des surfaces très poreuses. Ne pas connecter cet appareil au produit d'un autre fabricant. Le câble flexible et l'alimentation électrique ne peuvent pas être remplacés par un autre produit d'un fabricant tiers. Si le câble est endommagé, l'ensemble de la commande et de l'alimentation ne doit être remplacé que par un équipement d'origine fabriqué par Nanoleaf®. L'utilisation de tout composant de remplacement non approuvé annule la garantie et peut représenter un grave danger. Ne convient pas aux sorties de secours. Utilisez uniquement le contrôle fourni avec ou spécifié par ces instructions pour contrôler cette lampe. Les panneaux lumineux Nanoleaf® sont principalement prévus pour une utilisation décorative, et le modèle RGBW est doté d'une fonctionnalité d'éclairage tamisé.

NETTOYAGE ET ENTRETIEN Ne nettoyez pas l'appareil avec des liquides ou des sprays lorsqu'il est connecté à l'alimentation. Nettoyez-le avec un chiffon doux et sec, et n'utilisez pas de produits de nettoyage agressifs. Gérez conformément aux lois sur l'élimination des déchets de votre région.

PLAGE DE FRÉQUENCE Bluetooth, Thread/Matter: 2400-2483.5 MHz <10dBm

ES **AVISOS Y PRECAUCIONES** LEA Y SIGA TODAS LAS INSTRUCCIONES DE SEGURIDAD. Por favor, lea esta información de seguridad cuidadosamente y guarde este documento para futuras referencias. Los artículos de ayuda y el servicio de atención al cliente están siempre disponibles en <https://nanoleaf.me/support>. Este producto Nanoleaf® no está diseñado, certificado ni destinado para ser utilizado: en lugares cerrados que limiten la circulación del aire y/o atrapen el suficiente calor para generar una temperatura ambiente superior a 40 grados centígrados; en regiones o países distintos a aquellos para los que el producto fue concebido y certificado para su venta. Cuando utilice este producto Nanoleaf®: No abra ni desarme el dispositivo, ya que esto anulará la garantía y hará que el producto no sea seguro para su uso. Si la cinta adhesiva es un componente de este producto, tenga en cuenta que no está diseñado para ser utilizado con paredes de ladrillo sin pintar, papel de pared, superficies irregulares/texturizadas o superficies muy porosas. No conectes este dispositivo a productos de otros fabricantes. El cable flexible y la fuente de alimentación no pueden ser reemplazados por productos de terceros. El cable flexible y la fuente de alimentación no pueden sustituirse por un producto fabricado por terceros. Si el cable está dañado, el controlador y la fuente de alimentación sólo podrán sustituirse por equipos originales fabricados por Nanoleaf®. El uso de cualquier componente de repuesto no aprobado anulará la garantía y puede implicar un grave peligro para la seguridad. Los paneles de luz Nanoleaf® están destinados principalmente para uso decorativo, con función de salida RVAB que puede atenuarse.

LIMPIEZA Y MANTENIMIENTO No limpie el dispositivo con líquidos o aerosoles cuando esté conectado a la corriente. Limpie con un paño suave y seco, y no use agentes de limpieza fuertes. Gestionar de acuerdo con las leyes de eliminación en su área.

RANGO DE FRECUENCIA Bluetooth, Thread/Matter: 2400–2483.5 MHz <10dBm.

Model: NL72S101

Rated Power: 18W Max

Rating Input: 120V AC 60Hz

Color Temperature: 2700K to 6500K

Color Channel: RGBIC



Still Need Help?

go.nanoleaf.me/support



@nanoleaf



@nanoleafofficial



/thenanoleaf

Learn more at
nanoleaf.me