



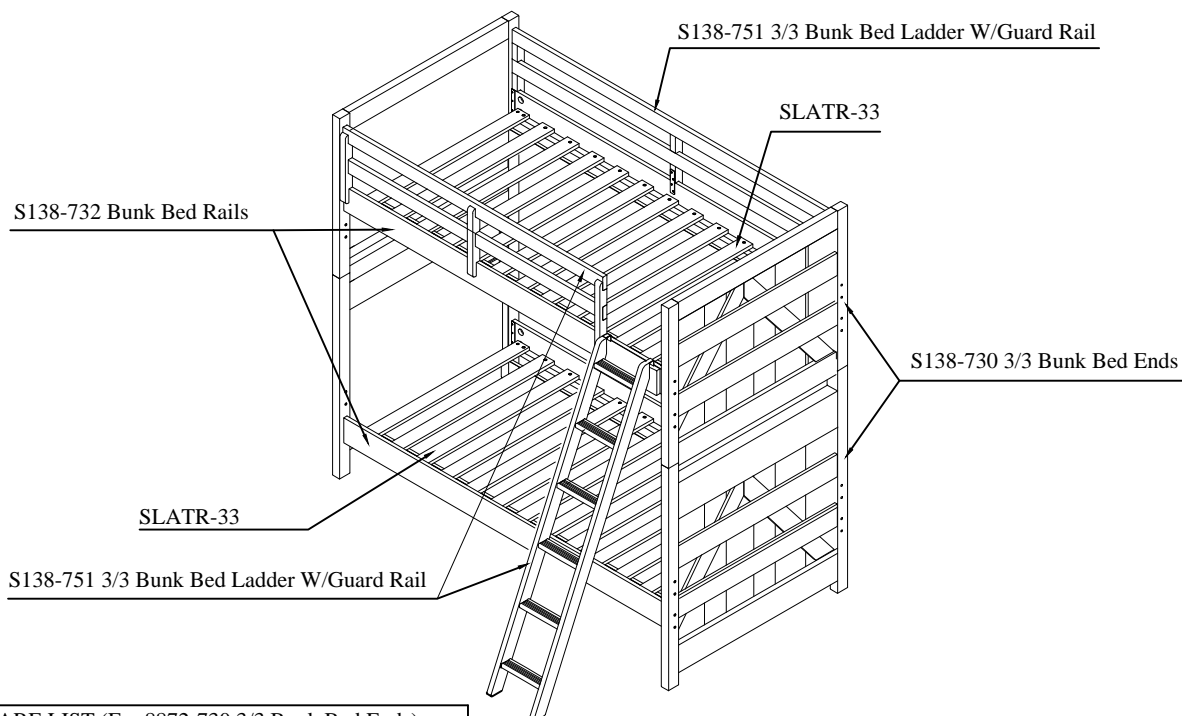
## ASSEMBLY INSTRUCTIONS

ITEM NO: S138-750 / 751 / 732

ITEM NO: SLATR-33

DESCRIPTION: 3/3 BUNK BED

Thank you for purchasing this quality product. Be sure to check all packing material carefully for small Hardware which may have come loose inside the carton during shipment. Identify and count all Hardware and compare with the Hardware List Below.



HARDWARE LIST (For 8872-730 3/3 Bunk Bed Ends)				
No.	Drawing	Descriptions	Size	Qty.
1		Bolt	1/4" x 50 x 2"	16 PCS
2		D-nut	1/4" x 15 x 9/16"	16 PCS
3		Bolt	1/4" x 15 x 9/16"	2 PCS
4		Allen Key Z	M4	1 PC
5		Metal Dowel	M12 x 100mm	4 PCS

HARDWARE LIST (For 8872-731 Bunk Bed Ladder w/Guard Rail)				
No.	Drawing	Descriptions	Size	Qty.
6		Bolt	1/4" x 45 x 1 3/4"	6 PCS
2		D-nut	1/4" x 15 x 9/16"	2 PCS
4		Allen Key Z	M4	1 PC
7		Bolt	1/4" x 25 x 1"	2 PCS
8		Metal Plate	120 x 25 x 3mm	1 PC
9		Screw	M4 x 20mm	8 PCS
10		Screw	M4 x 15mm	2 PCS

HARDWARE LIST (For 8872-732 Bunk Bed Rails)				
No.	Drawing	Descriptions	Size	Qty.
11		Bolt	1/4" x 50 x 4 1/8"	16 PCS
12		Half Curve-nut	1/4"	16 PCS
4		Allen Key Z	M4	1 PC

HARDWARE LIST (For SLATR-33)				
No.	Drawing	Descriptions	Size	Qty.
13		Screw	M4 x 32mm	60 PCS

PART LIST		
Drawing	Descriptions	Qty.
	Upper Bunk Bed Ends (S138-750)	2 PCS
	Lower Bunk Bed Ends (S138-750)	2 PCS
	SLATR-33	2 SET
	Long Guard Rail (S138-731)	1 PC
	Short Guard Rail (S138-731)	1 PC
	Ladder (S138-731)	1 PC
	Bed Side Rails (S138-732)	4 PCS

TOOLS REQUIRED (NOT PROVIDED)

PHILLIPS SCREWDRIVER

MADE IN VIET NAM

Page 1 of 8



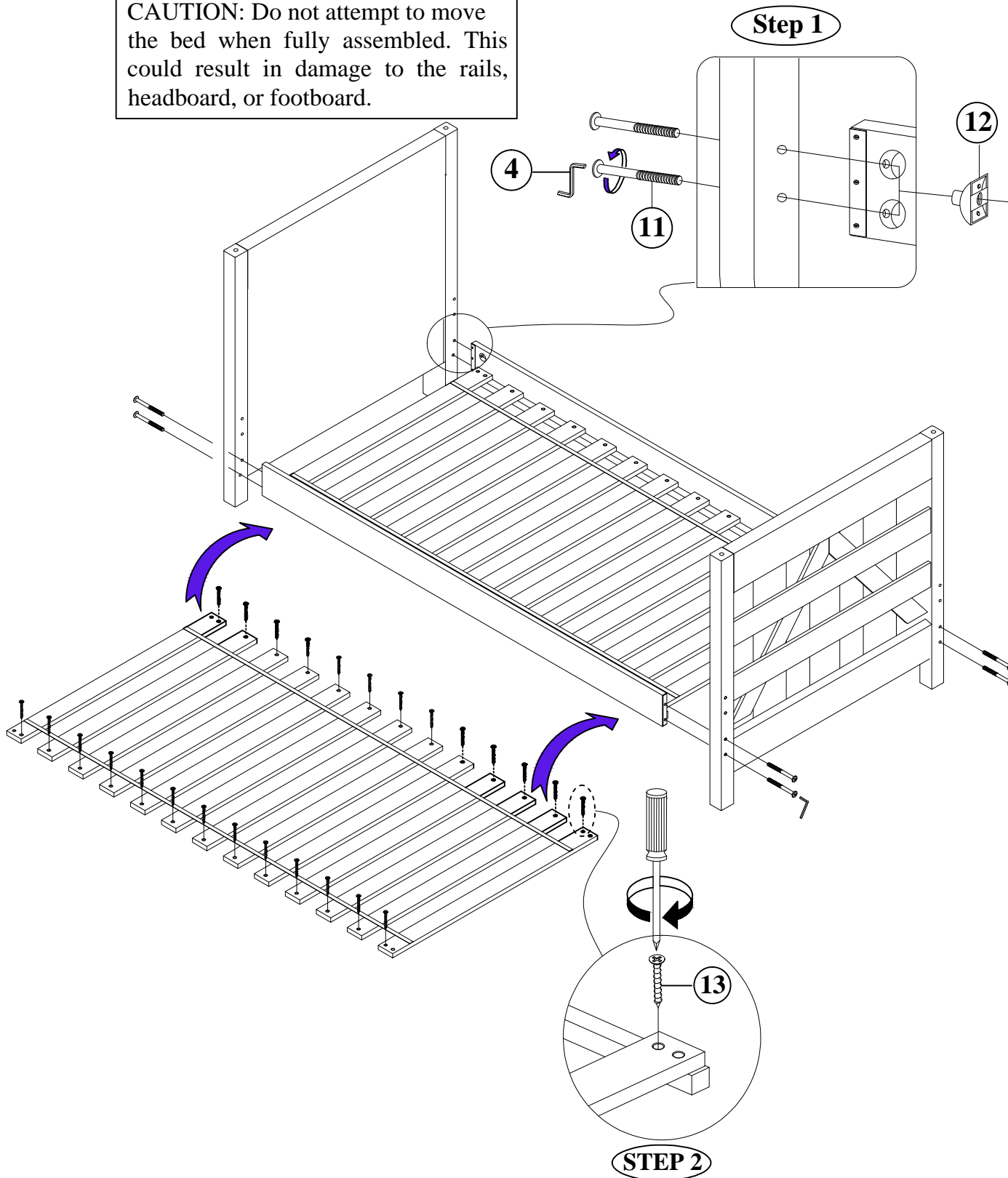
# ASSEMBLY INSTRUCTIONS

ITEM NO: S138-750 / 751 / 732

ITEM NO: SLATR-33

DESCRIPTION: 3/3 BUNK BED

**CAUTION:** Do not attempt to move the bed when fully assembled. This could result in damage to the rails, headboard, or footboard.





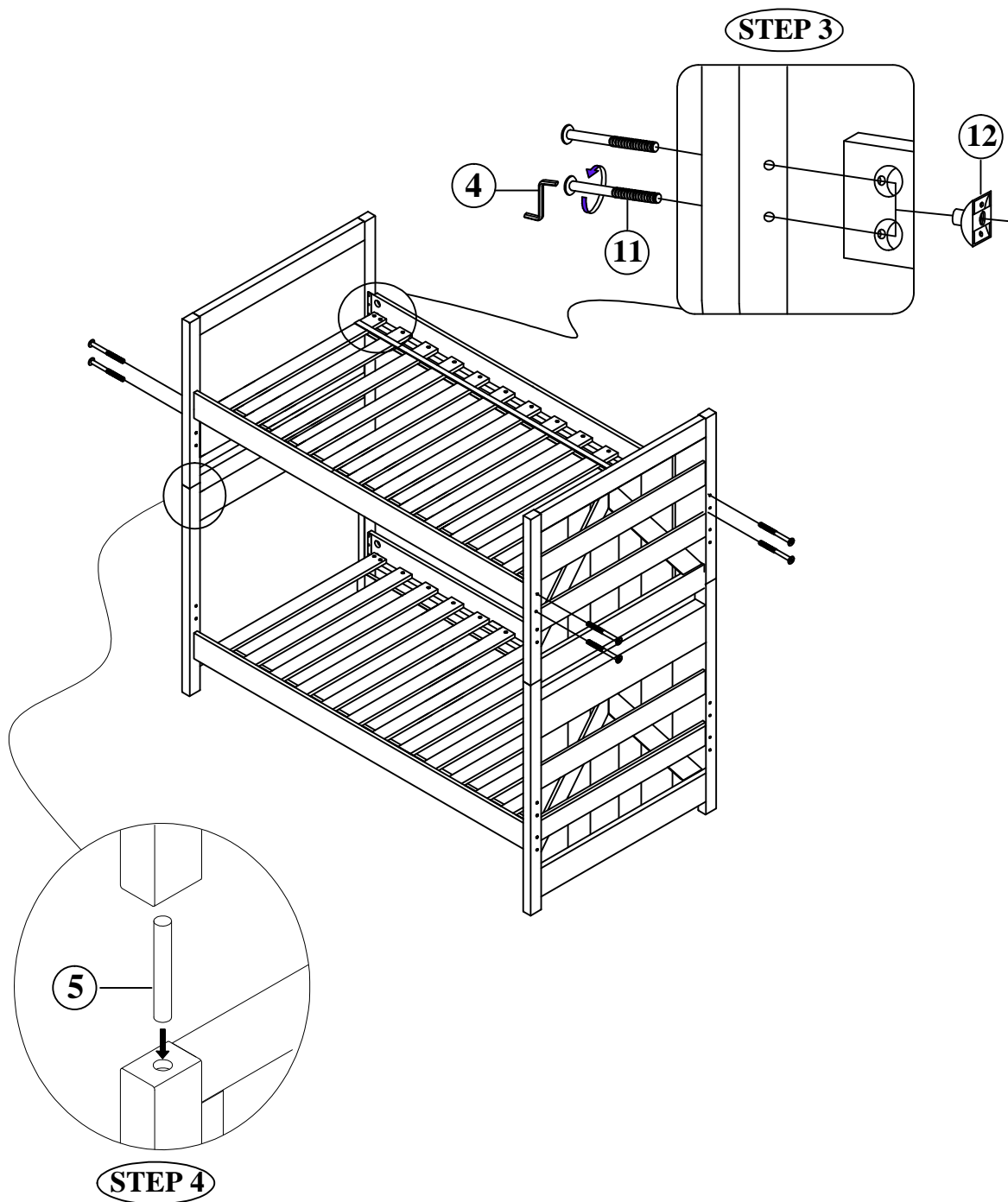
## ASSEMBLY INSTRUCTIONS

ITEM NO: S138-750 / 751 / 732

ITEM NO: SLATR-33

DESCRIPTION: 3/3 BUNK BED

**CAUTION:** Do not attempt to move the bed when fully assembled. This could result in damage to the rails, headboard, or footboard.

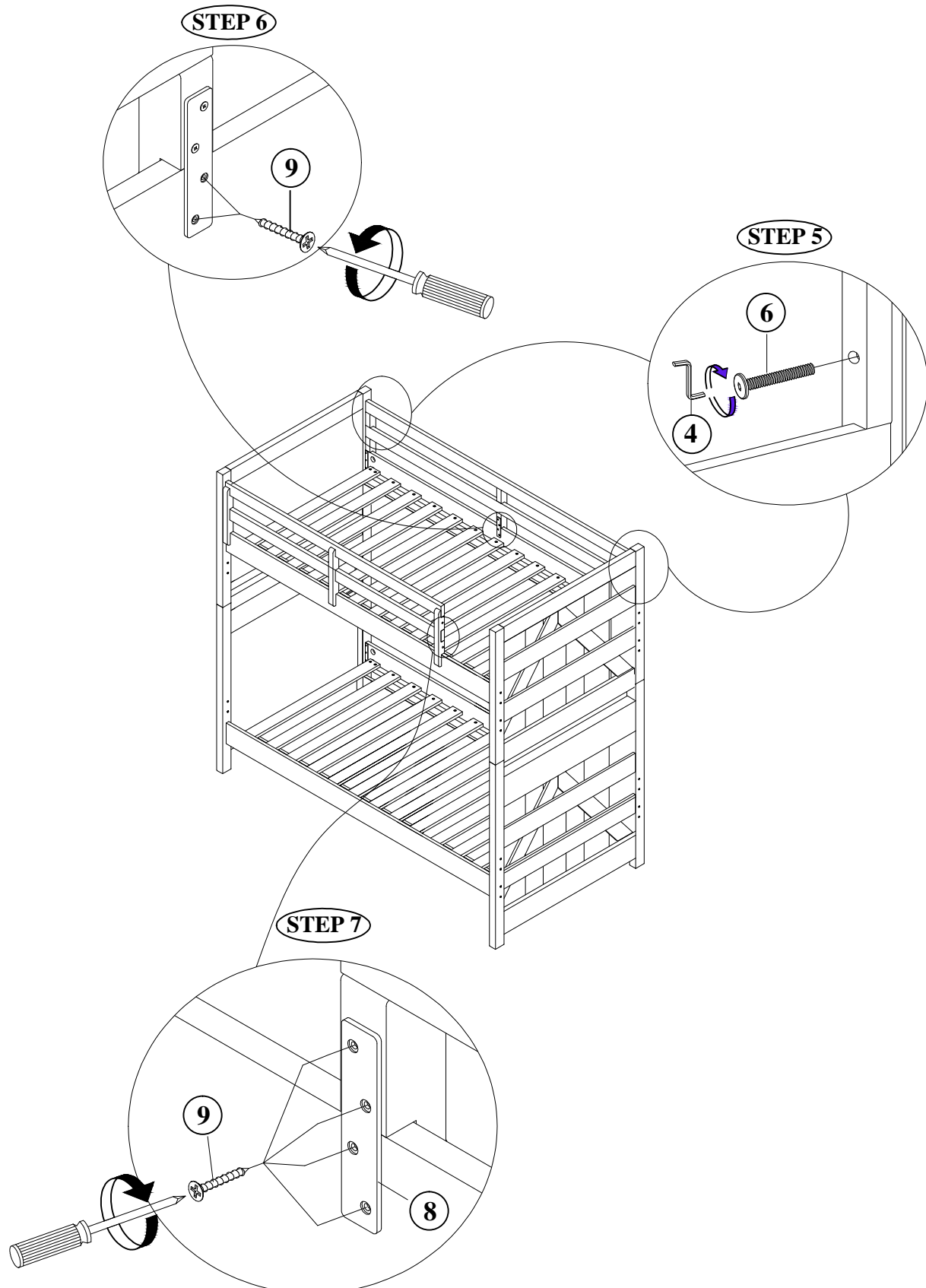


## ASSEMBLY INSTRUCTIONS

ITEM NO: S138-750 / 751 / 732

ITEM NO: SLATR-33

DESCRIPTION: 3/3 BUNK BED



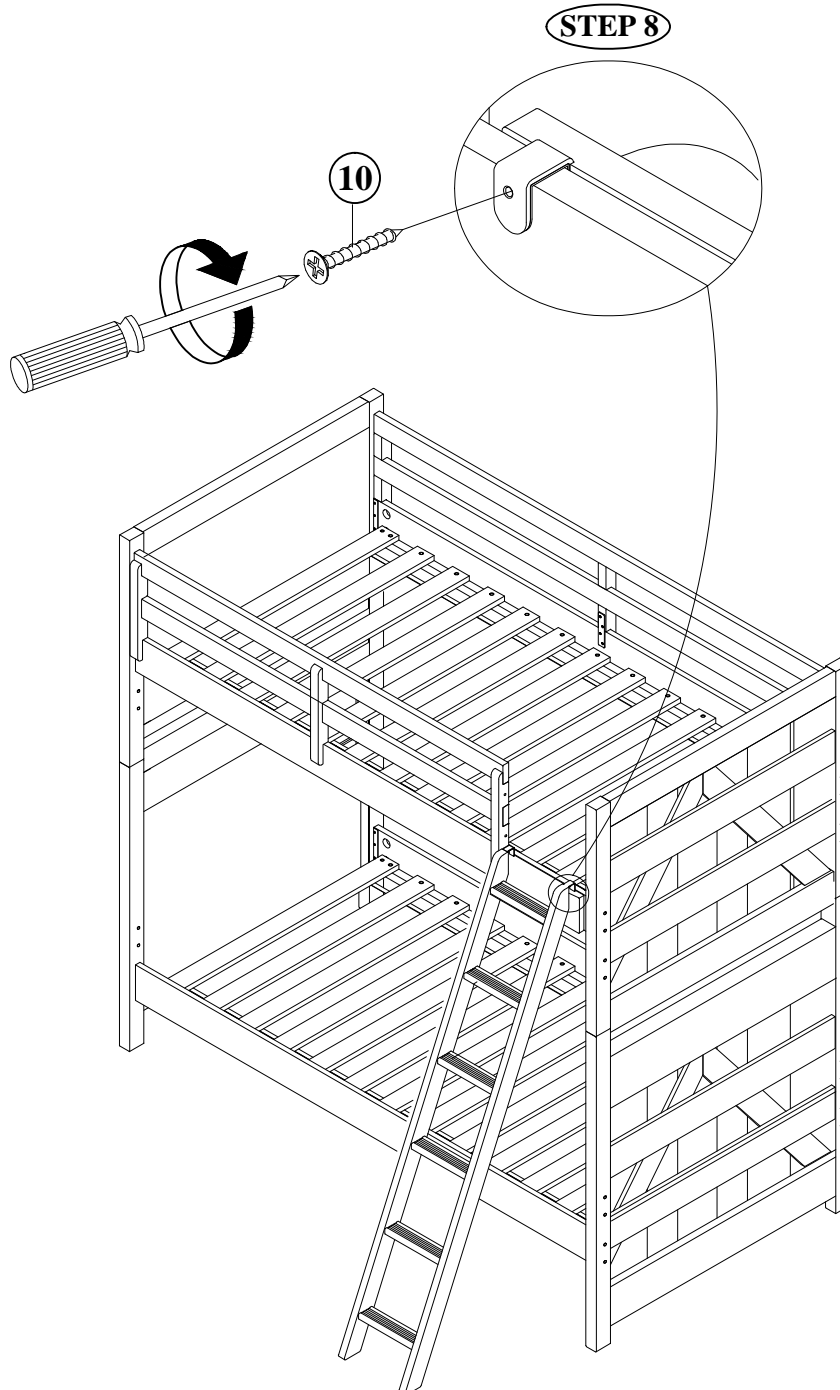


## ASSEMBLY INSTRUCTIONS

ITEM NO: S138-750 / 751 / 732

ITEM NO: SLATR-33

DESCRIPTION: 3/3 BUNK BED



MADE IN VIET NAM

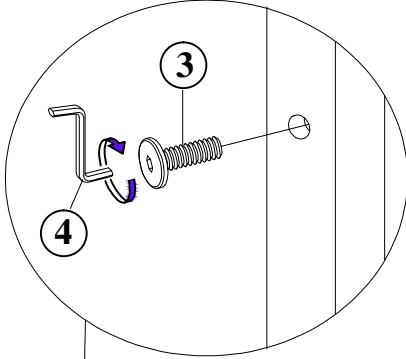
# ASSEMBLY INSTRUCTIONS

ITEM NO: S138-750 / 751 / 732

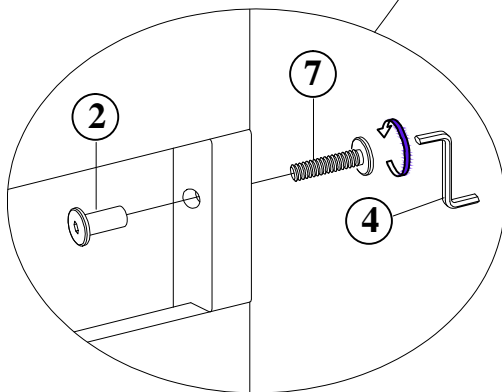
ITEM NO: SLATR-33

DESCRIPTION: 3/3 BUNK BED

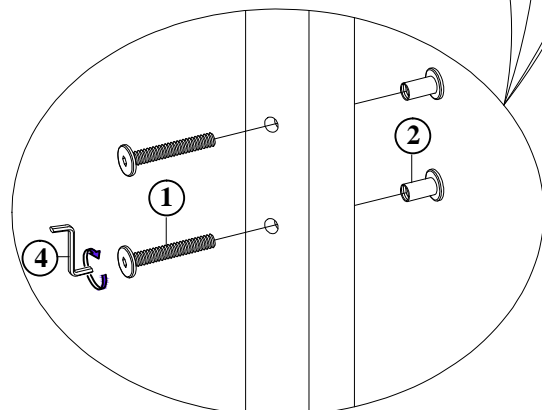
## STEP 9



## STEP 10



## STEP 11



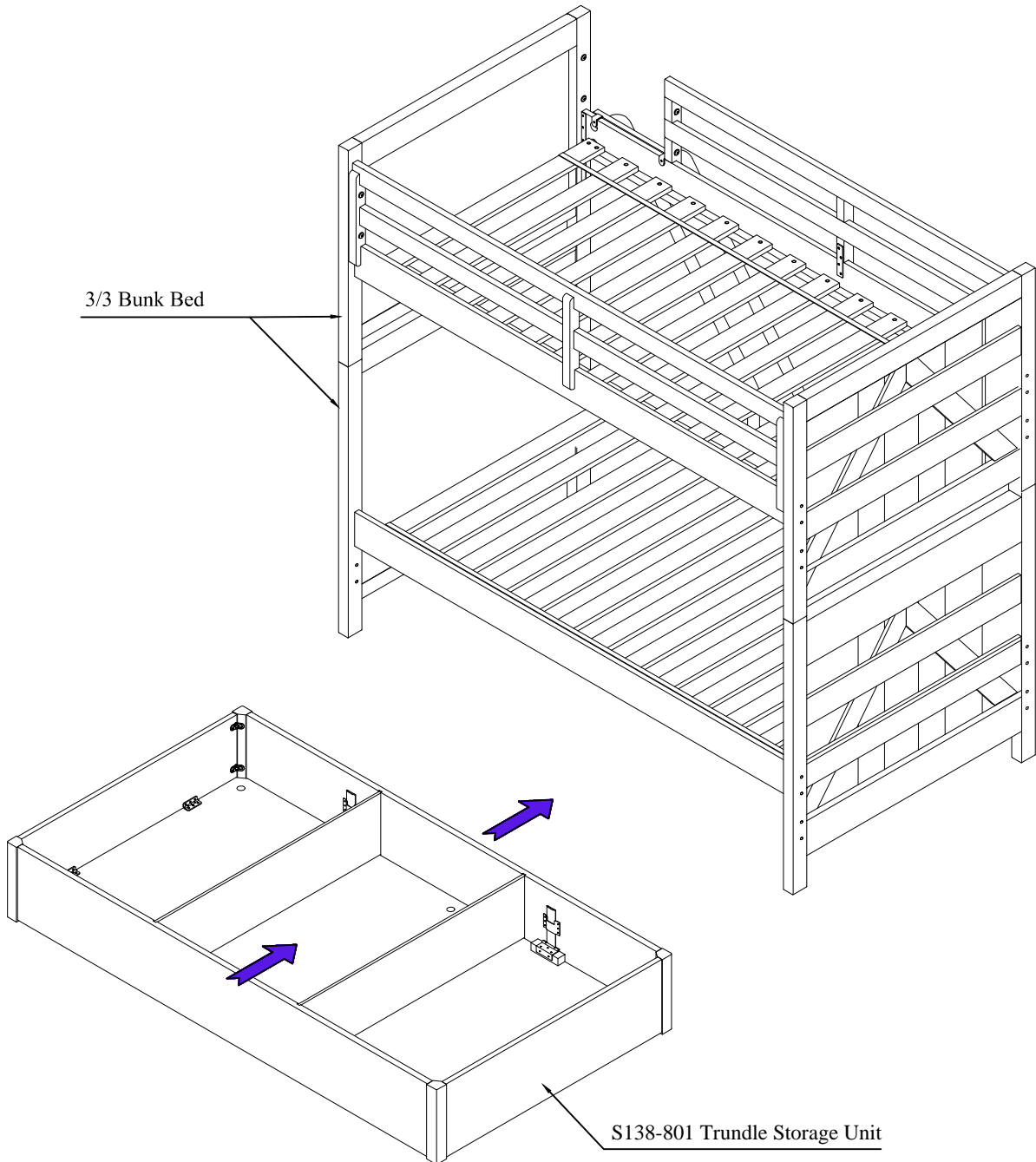


## ASSEMBLY INSTRUCTIONS

ITEM NO: S138-750 / 751 / 732 / 801

ITEM NO: SLATR-33

DESCRIPTION: 3/3 BUNK BED & TRUNDLE STORAGE UNIT



# ASSEMBLY INSTRUCTIONS

## DESCRIPTION: 3/3 BUNK BED

---

### Replacement Parts

Replacement parts, including additional guardrails, may be obtained from place of purchase or Original distribution

### Size of Mattress

This bed is designed to use a twin mattress 37.5" to 38.5" wide x 74" to 75" long with the total thickness not exceeding 8" for upper bunk and lower bunk. Do not use mattress without the proper slat system and proper attachments described in the instructions. NOTE: there must be at least 5 inches from the top surface of the mattress to top edge of guardrail.

### Replacement Parts

Keep all instruction sheets for future reference to assemble bed for moving and/or different set up.

## SAFETY WARNING !

1. Follow the information on the warning appearing on the upper bunk end structure and on the carton. Do not remove warning label from bed.
2. Always use the recommended size mattress or mattress support, or both, to help prevent the likelihood of entrapment or falls.
3. Surface of mattress must be at least 5 inches below the upper edge of the guardrails.
4. Do not allow children under 6 years of age to use the upper bunk.
5. Prohibit more than one person on upper bunk.
6. Periodically check and ensure that the guardrail, ladder, and other components are in their proper position, free from damage, and that all connectors are tight.
7. Do not allow horseplay on or under the bed and prohibit jumping on the bed.
8. Always use the ladder for entering and leaving the upper bunk.
9. Do not use any substitute parts. Contact manufacturer or dealer for replacement parts.
10. Use of a night light may provide added safety precaution for a child using the upper bunk.
11. If the bunk bed will be placed next to a wall, the guardrail that runs the full length of the bed should be placed against the wall to prevent entrapment between the bed and the wall.
12. Always use guardrails on both long sides of the upper bunk.
13. The use of water or sleep flotation mattress is prohibited.
14. Keep these instructions for future reference.
15. **Strangulation Hazard**-Never attach or hang items to any part of the bunk bed that are not designed for use with the bed: for example, but not limited to, hooks, belts, and jump ropes.