


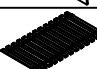





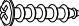


ASSEMBLY INSTRUCTION



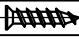

3564850P BUNK BED (CHERRY BROWN)		
SKU#	ITEM#	ITEM DESCRIPTION
35148508	485 - 41T	TOP BUNK ENDS
35548506	485 - 41B	BOTTOM BUNK ENDS
35248500	485 - 42	BUNK SIDE RAILS
35348502	485 - 43	GUARD RAIL AND LADDER

Thank you for purchasing this quality product. Be sure to check all packing material carefully for small parts which may have come loose inside the carton during transit. Identify and count all parts and compare with the parts list below.

SKU	ITEM	DESCRIPTION	PARTS LIST	QTY
35148508	485-41T	Top Bunk Ends	A 	2pcs
35548506	485-41T	Bottom Bunk Ends	B 	2pcs
35248500	485-42	Bunk Side Rails	C 	4pcs
35248500	485-42	Slats Roll	D 	2 Sets
35348502	485-43	Long Guard Rail	E 	1pc
35348502	485-43	Short Guard Rail	F 	1pc
35348502	485-43	Ladder	G 	1pc

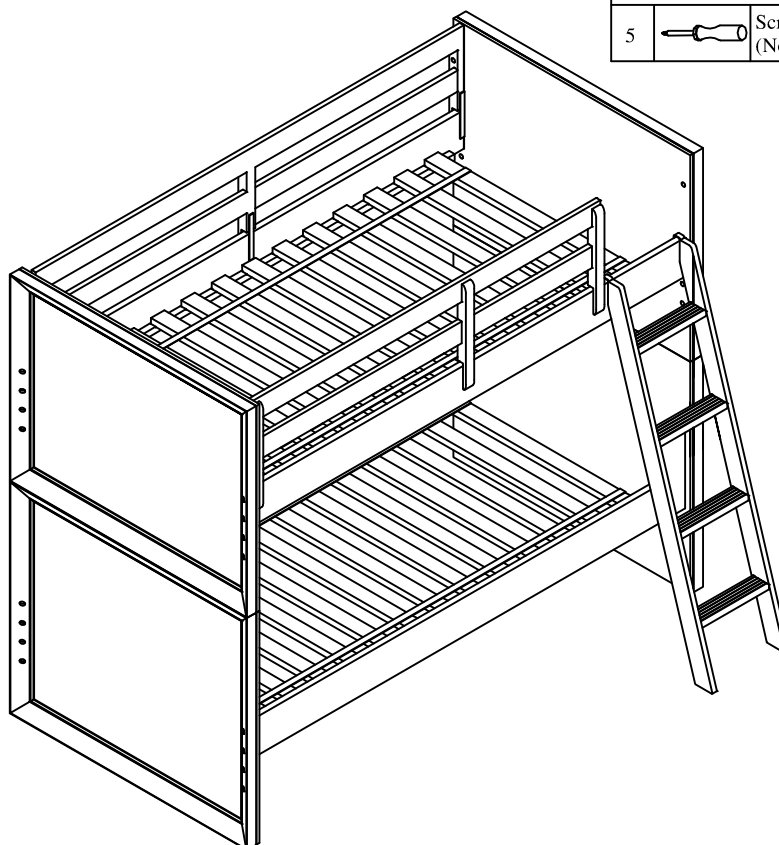
HARDWARE LIST			QTY
1		φ5/16"x 2" Bolt	16pcs
		φ5/16"x14mm Lock washer	
		φ5/16"x18mm Flat washer	
2		Allen Key 4mm	1pc
3		φ8"x1" Screw	52pcs

Hardware Pack Location:
Bunk Side Rails, SKU#35248500

HARDWARE LIST			QTY
1		φ5/16"x 2" Bolt	3pcs
		φ5/16"x14mm Lock washer	
		φ5/16"x18mm Flat washer	
2		Allen Key 4mm	1pc
3		φ8"x3/4" Screw	16pcs
4		φ12"x110mm Pin	4pcs

Hardware Pack Location:
Bunk Guard Rail And Ladder, SKU#35348502

HARDWARE REQUIRED			QTY
5		Screwdriver (Not Provided)	1pc



02/06/2020

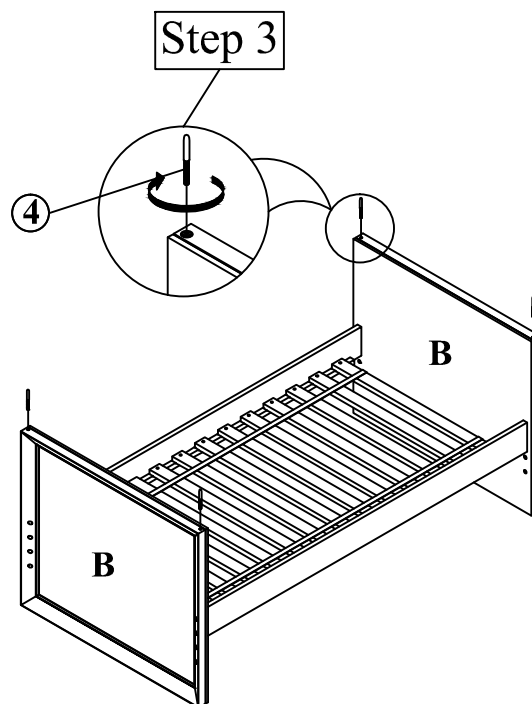
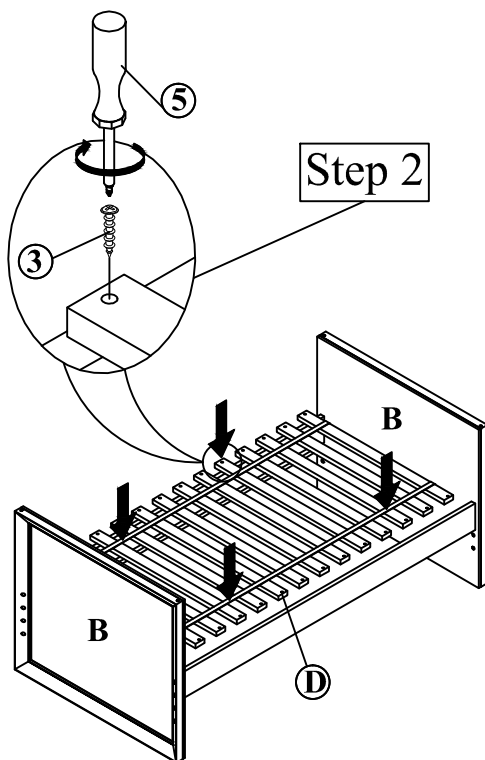
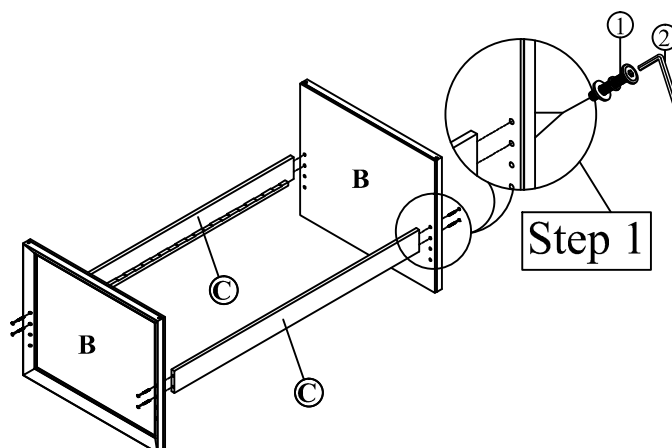
*MADE IN VIETNAM
PAGE 1 OF 5

DO NOT use substitute parts. Contact Rooms To Go (www.ROOMSTOGO.com) for re-placement parts and instructional literature if needed.

ASSEMBLY INSTRUCTION

3564850P BUNK BED (CHERRY BROWN)		
SKU#	ITEM#	ITEM DESCRIPTION
35148508	485 - 41T	TOP BUNK ENDS
35548506	485 - 41B	BOTTOM BUNK ENDS
35248500	485 - 42	BUNK SIDE RAILS
35348502	485 - 43	GUARD RAIL AND LADDER

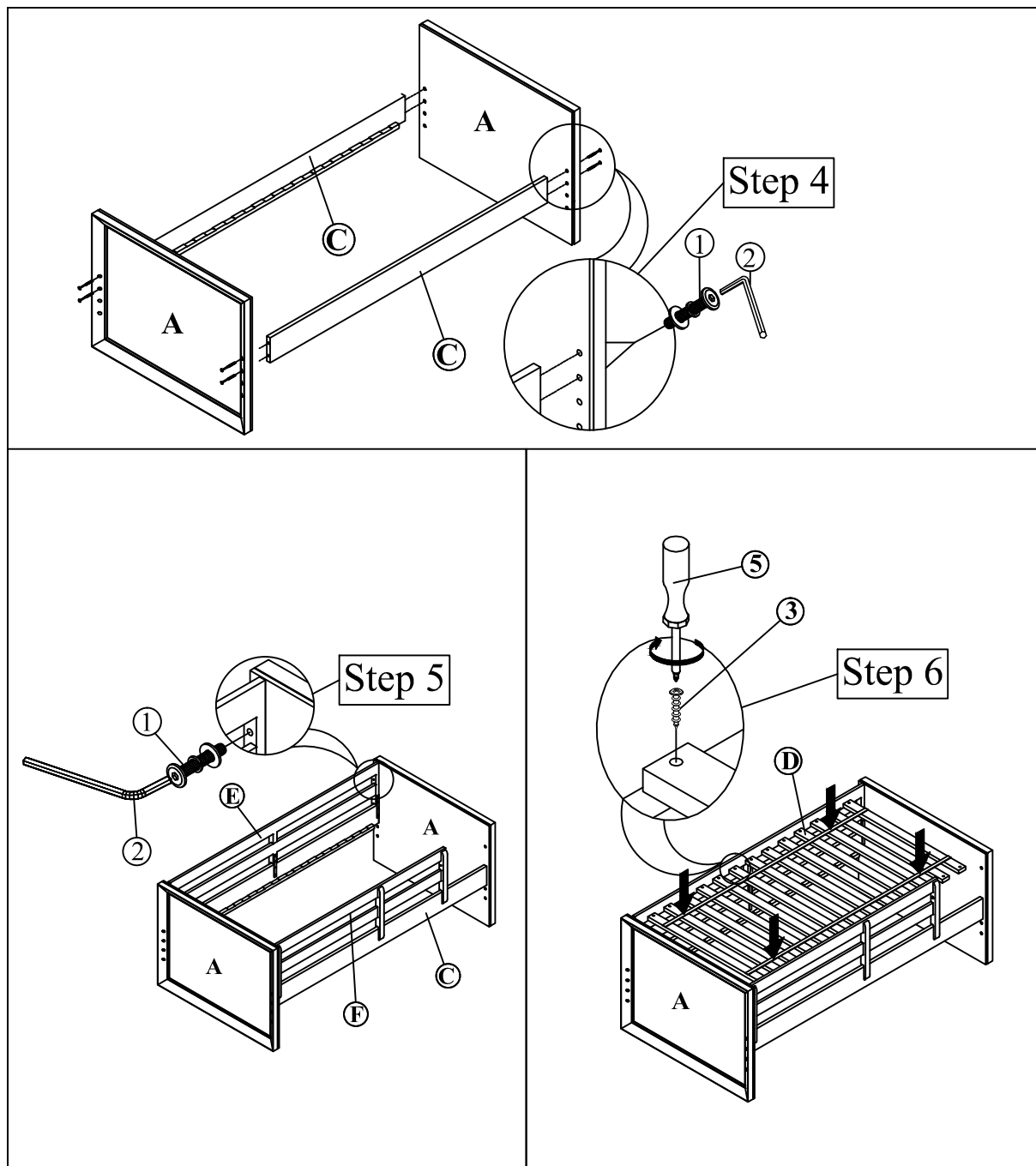
Thank you for purchasing this quality product. Be sure to check all packing material carefully for small parts which may have come loose inside the carton during transit. Identify and count all parts and compare with the parts list below.



ASSEMBLY INSTRUCTION

3564850P BUNK BED (CHERRY BROWN)		
SKU#	ITEM#	ITEM DESCRIPTION
35148508	485 - 41T	TOP BUNK ENDS
35548506	485 - 41B	BOTTOM BUNK ENDS
35248500	485 - 42	BUNK SIDE RAILS
35348502	485 - 43	GUARD RAIL AND LADDER

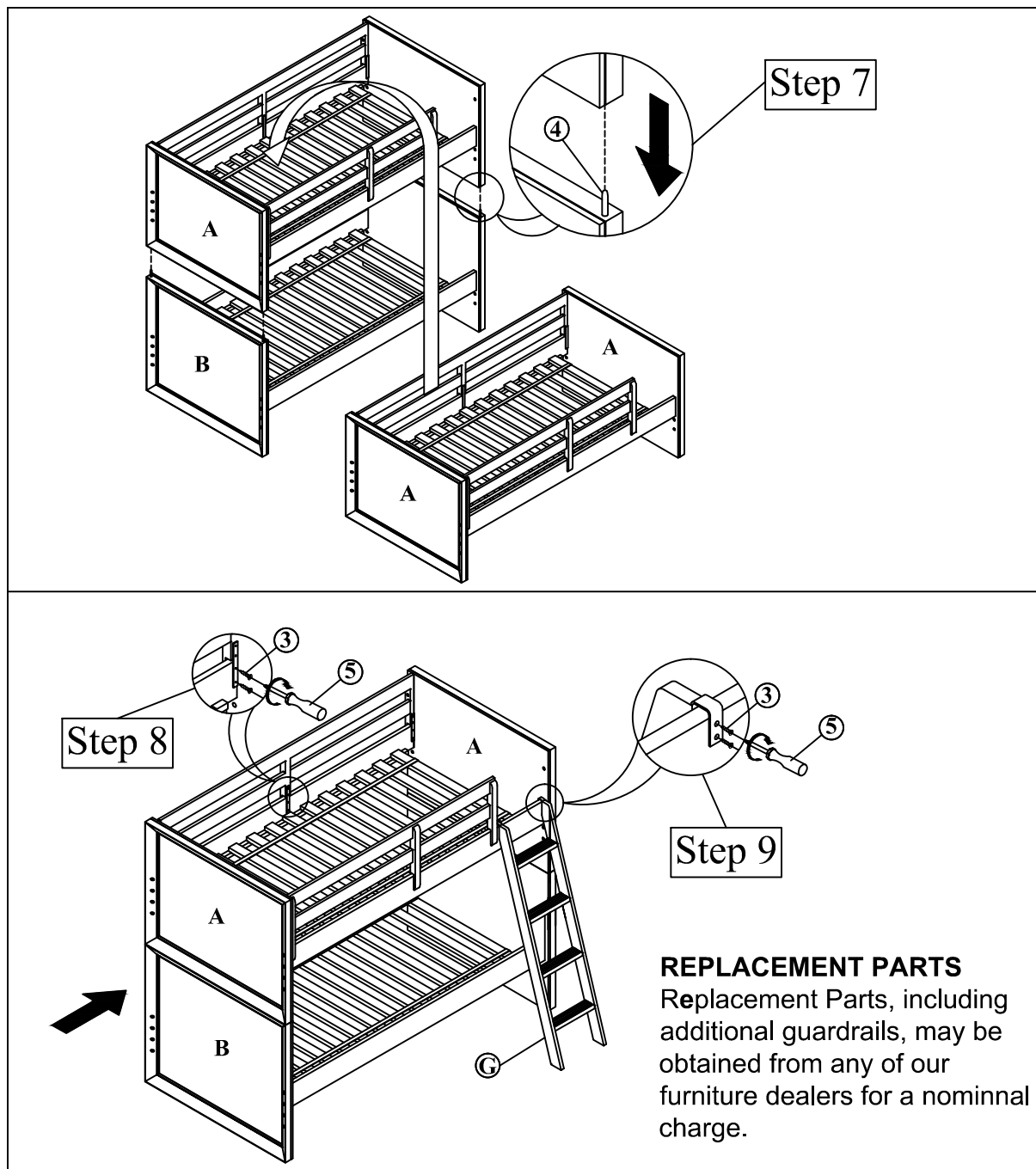
Thank you for purchasing this quality product. Be sure to check all packing material carefully for small parts which may have come loose inside the carton during transit. Identify and count all parts and compare with the parts list below.



ASSEMBLY INSTRUCTION

3564850P BUNK BED (CHERRY BROWN)		
SKU#	ITEM#	ITEM DESCRIPTION
35148508	485 - 41T	TOP BUNK ENDS
35548506	485 - 41B	BOTTOM BUNK ENDS
35248500	485 - 42	BUNK SIDE RAILS
35348502	485 - 43	GUARD RAIL AND LADDER

Thank you for purchasing this quality product. Be sure to check all packing material carefully for small parts which may have come loose inside the carton during transit. Identify and count all parts and compare with the parts list below.





ASSEMBLY INSTRUCTION

3564850P BUNK BED (CHERRY BROWN)		
SKU#	ITEM#	ITEM DESCRIPTION
35148508	485 - 41T	TOP BUNK ENDS
35548506	485 - 41B	BOTTOM BUNK ENDS
35248500	485 - 42	BUNK SIDE RAILS
35348502	485 - 43	GUARD RAIL AND LADDER

Thank you for purchasing this quality product. Be sure to check all packing material carefully for small parts which may have come loose inside the carton during transit. Identify and count all parts and compare with the parts list below.

Safety Warning Labels

Only use mattress which is 74" – 75" long and 37 ½" – 38 ½" wide on upper bunk, and lower bunk.

Ensure thickness of mattress and foundation combined does not exceed 11" and mattress is at least 5" below upper edge of guardrails.

Always use the recommended size mattresses or mattress supports, or both, to help prevent the likelihood of entrapment or falls.

Do not allow children under 6 years of age to use the upper bunk.

Use guardrails on both sides of the upper bunk.

Prohibit horseplay on or under beds and prohibit jumping on the bed.

Prohibit more than one person on upper bunk.

Use ladder for entering or leaving upper bunk.

If the bunk bed will be placed next to a wall, the guardrail that runs the full length of the bed should be placed against the wall to prevent entrapment between the bed and the wall.

Follow the information on the warnings appearing on the upper bunk end structure and on the carton.

Do not remove warning label from bed.

Periodically check and ensure that the guardrail, ladder, and other components are in their proper position, free from damage, and that all connectors are tight.

Do not use substitute parts. Contact the manufacture or dealer for replacement parts.

Use of a night light may provide added safety precaution for a child using the upper bunk.

The use of water or sleep flotation mattresses is prohibited.

STRANGULATION – Never attach or hang items to any part of the bunk bed that are not designed for use with the bed: for example, but not limited to, hooks, belts and jump ropes.

Keep these instructions for future reference.