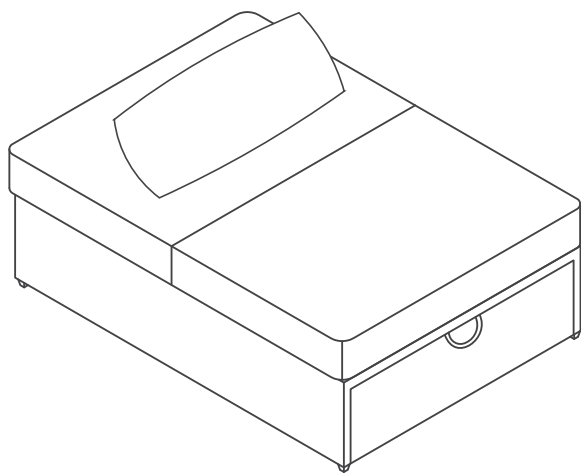


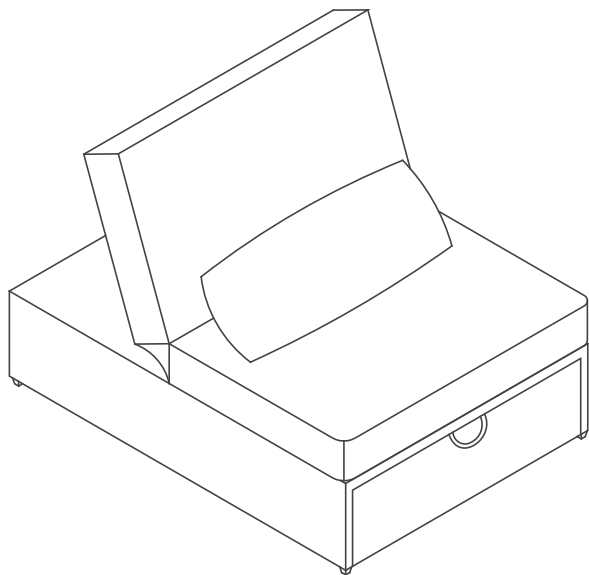
NIMBLE 2.0

CONVERTIBLE SLEEPER BED

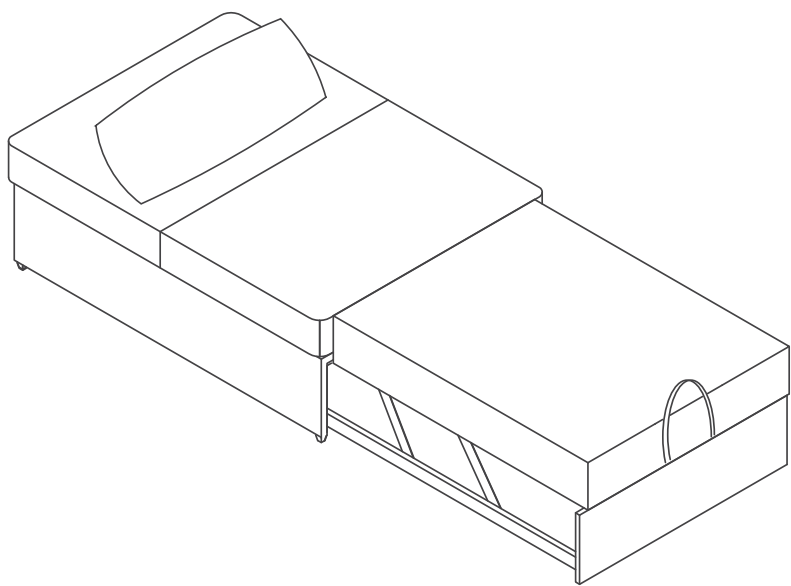
OPTION 1



OPTION 2



OPTION 3

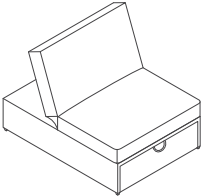







RTG SKU#	STYLE#	FINISH	ITEM DESCRIPTION
38223210	25C1010PNK	BLUSH	CONVERTIBLE SLEEPER BED
38223222	25C1010NAT	NATURAL	CONVERTIBLE SLEEPER BED
38223234	25C1010GRY	LIGHT GRAY	CONVERTIBLE SLEEPER BED
38223246	25C1010BLU	BLUE	CONVERTIBLE SLEEPER BED

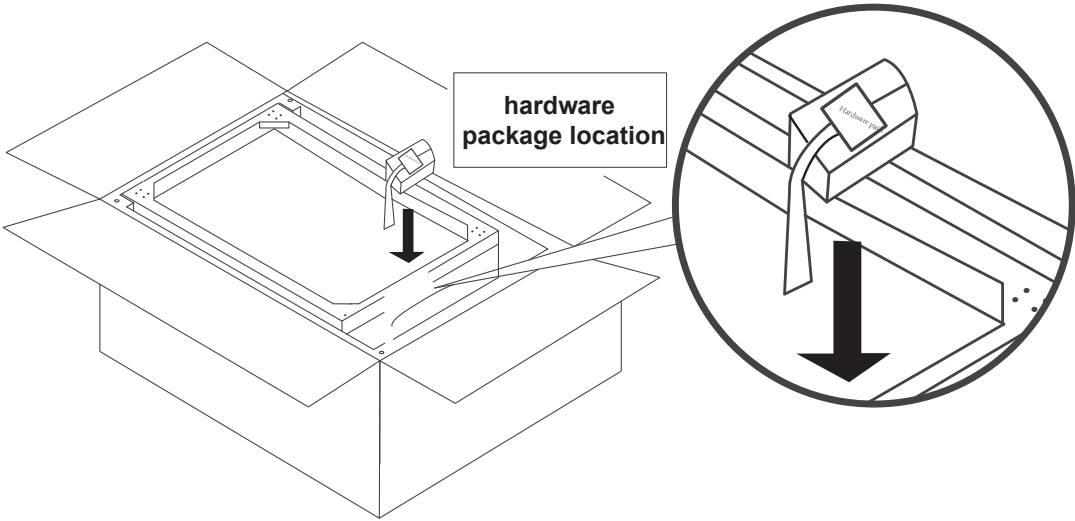
DO NOT USE SUBSTITUTE PARTS. PLEASE CONTACT YOUR RETAIL STORE OR WWW.ROOMSTOGO.COM WITH SERVICE OR PARTS REPLACEMENT REQUEST

This product is manufactured by (LHDP) for ROOMS TO GO® | **KIDS**

Thank you for purchasing this quality product. Be sure to check all packing material carefully for small parts which may have come loose inside the carton during shipment. Identify and count all parts and compare with the part list below. Read all instruction before assembling and keep these instruction for future reference.

PART LIST			
#1		SOFA BED	01 PC
#2		LEG	4 PCS
#3		CASTER	4 PCS
#4		PILLOW	01 PC

HARDWARE LIST			
A		BOLT Ø1/4"-20-x5/8"	16 PCS
B		ALLEN WRENCH M4*80	1 PC

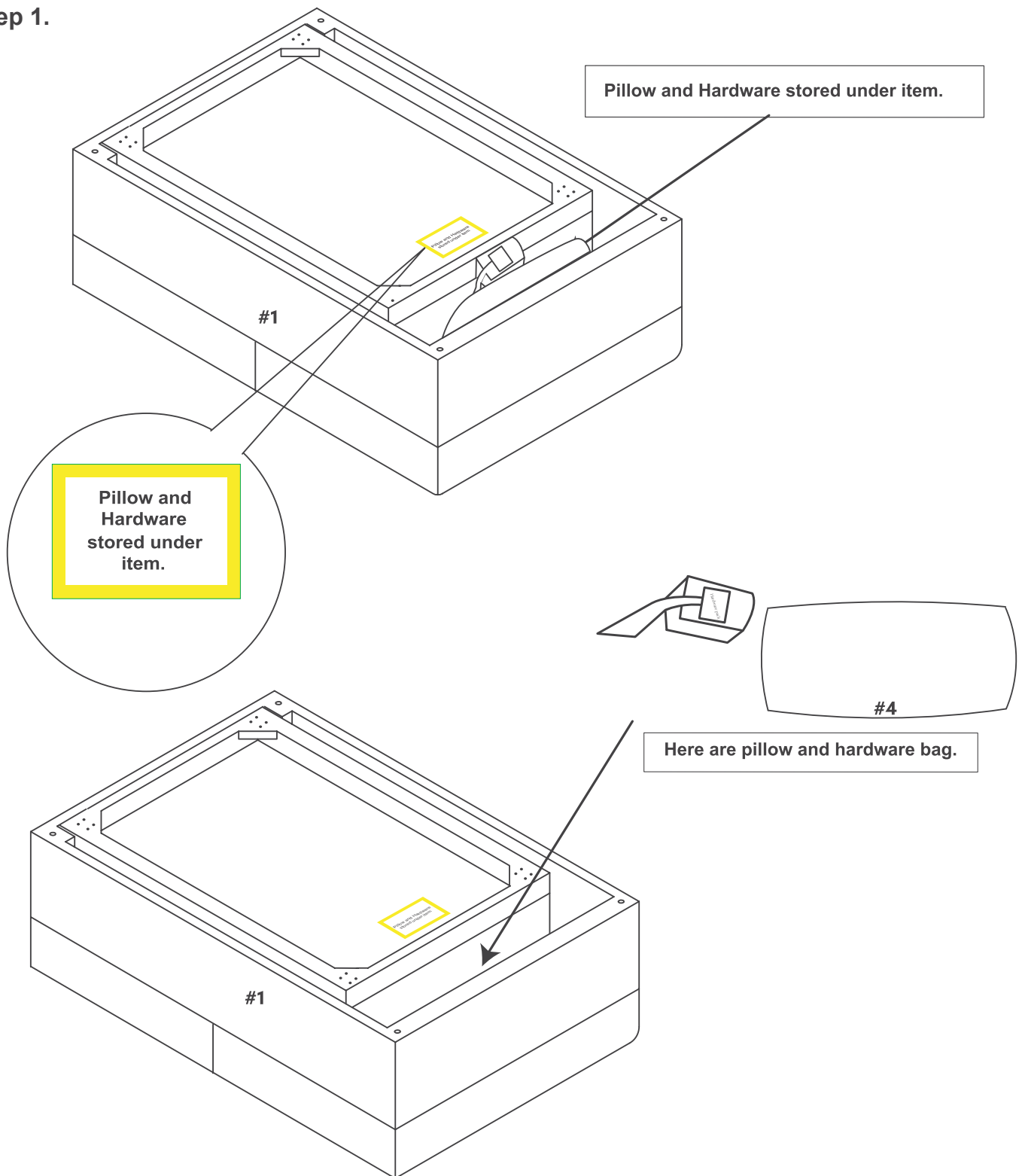


DO NOT USE SUBSTITUTE PARTS. PLEASE CONTACT YOUR RETAIL STORE OR WWW.ROOMSTOGO.COM WITH SERVICE OR PARTS REPLACEMENT REQUEST

This product is manufactured by (LHDP) for ROOMS TO GO® | KIDS

Assembly Instructions:

Step 1.



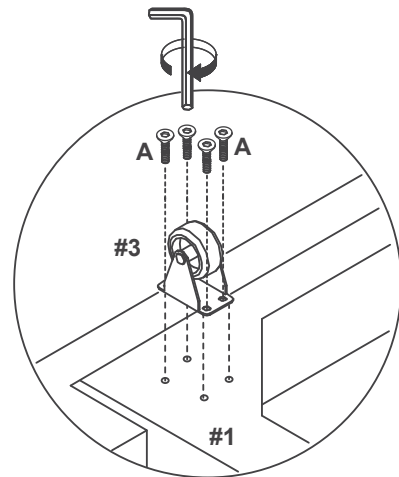
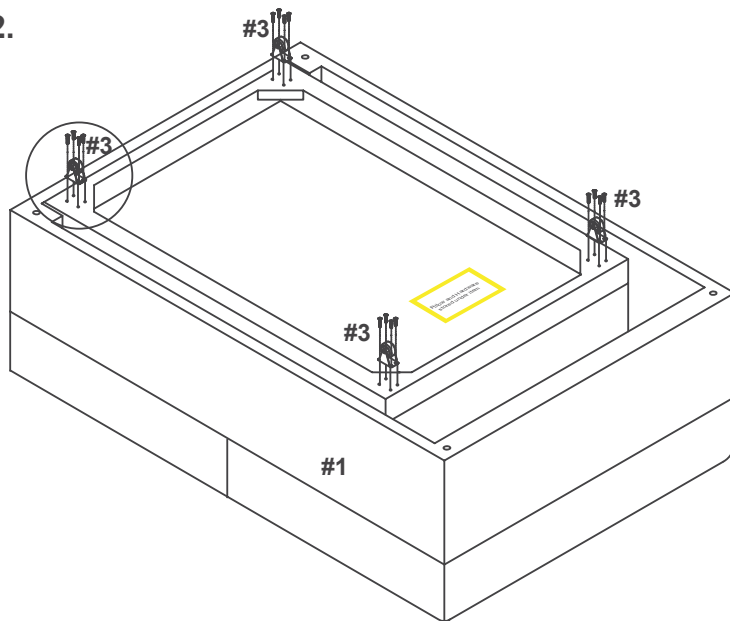
Laying the sofa bed(1) upside down. Take out the pillow(4) and hardware bag

DO NOT USE SUBSTITUTE PARTS. PLEASE CONTACT YOUR RETAIL STORE OR WWW.ROOMSTOGO.COM WITH SERVICE OR PARTS REPLACEMENT REQUEST

This product is manufactured by (LHDP) for ROOMS TO GO® | KIDS

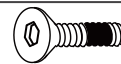
Assembly Instructions:

Step 2.



Use allen wrench(B) tighten bolts(A) to secure the casters(#3)

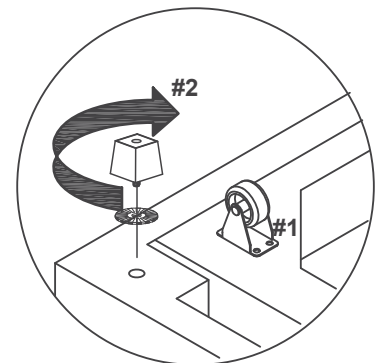
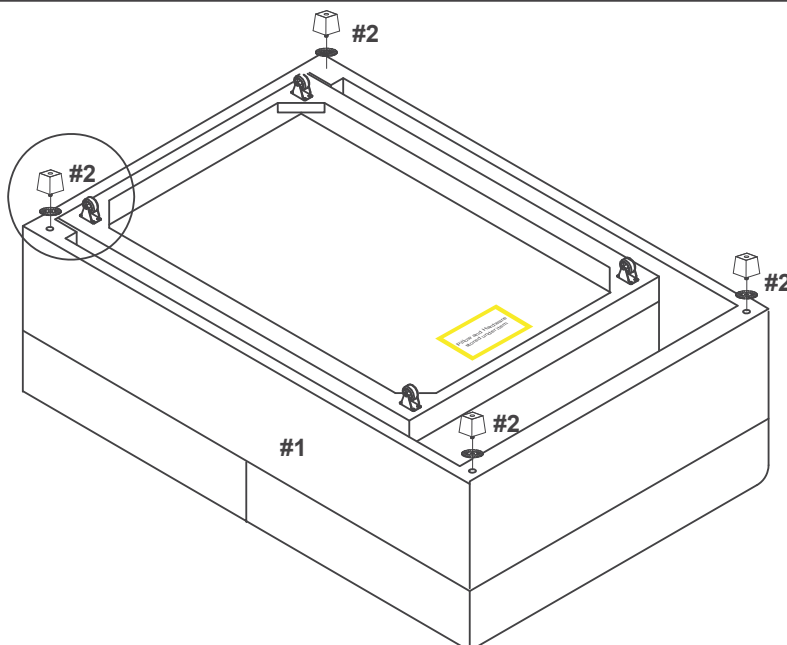
A



16

Assembly Instructions:

Step 3.



Attach the legs(#2) to the chair frame.

#2



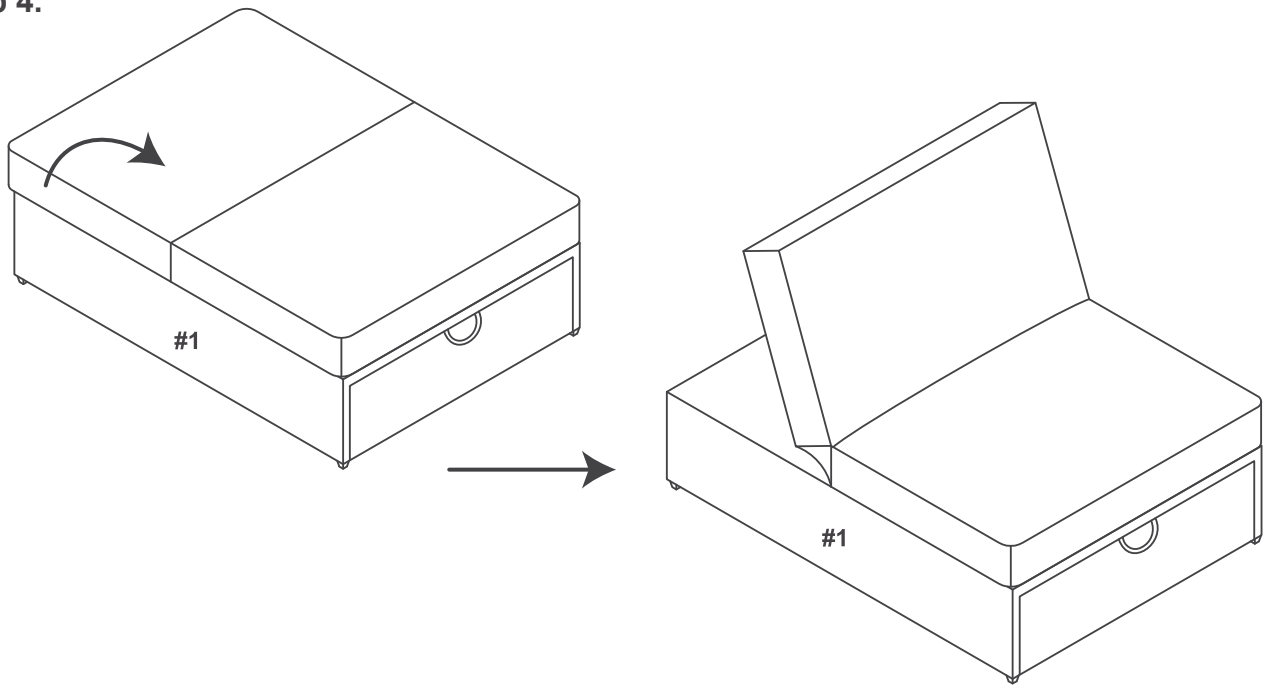
04

DO NOT USE SUBSTITUTE PARTS. PLEASE CONTACT YOUR RETAIL STORE OR WWW.ROOMSTOGO.COM WITH SERVICE OR PARTS REPLACEMENT REQUEST

This product is manufactured by (LHDP) for ROOMS TO GO® | KIDS

Assembly Instructions:

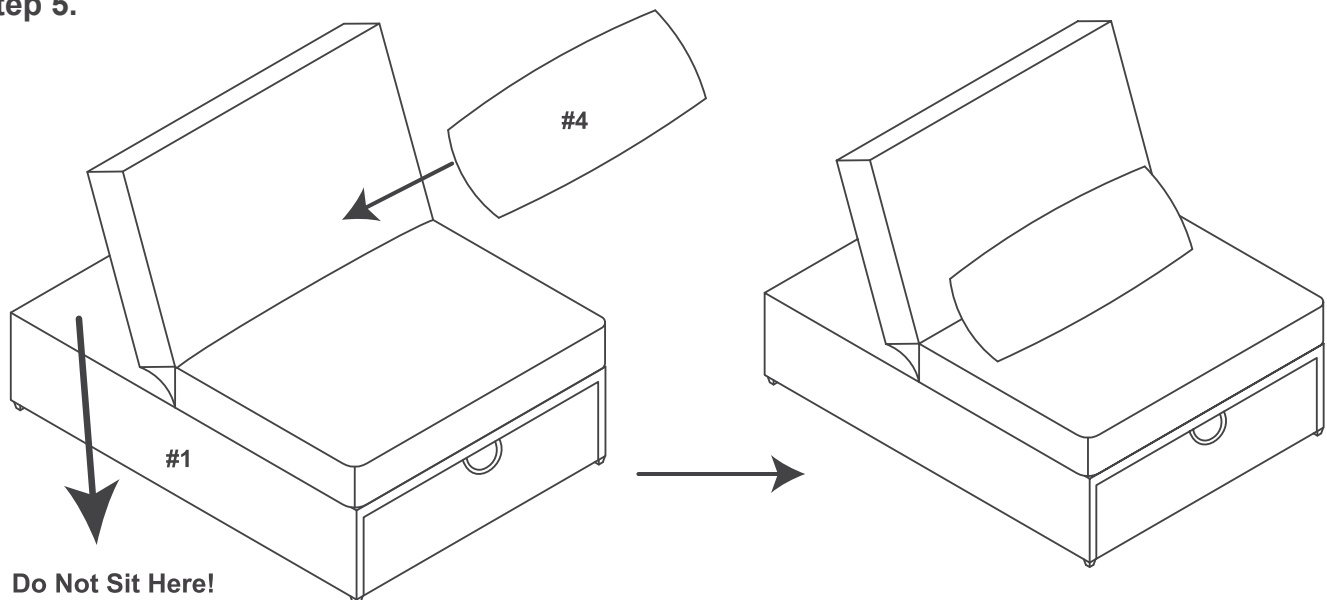
Step 4.



Pull up the back of the chair to make it a recliner.

Assembly Instructions:

Step 5.



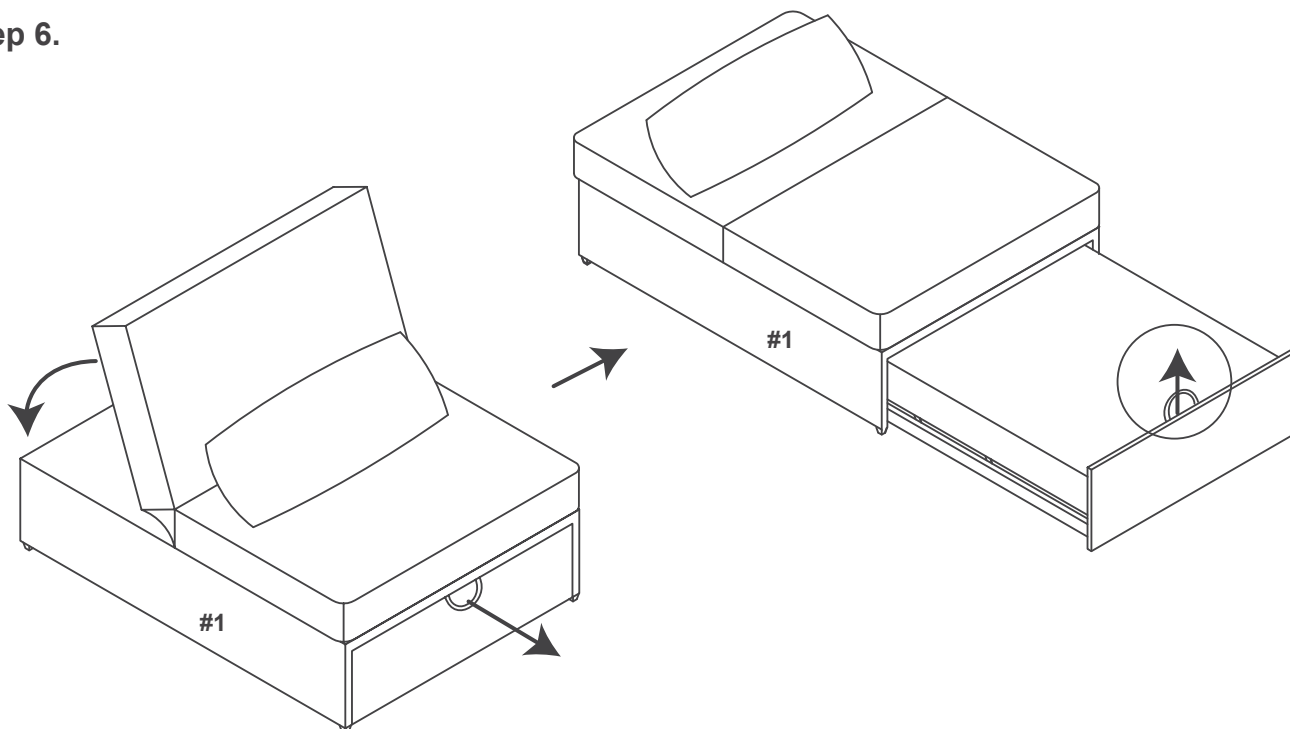
Then add pillow(4) and you're done

DO NOT USE SUBSTITUTE PARTS. PLEASE CONTACT YOUR RETAIL STORE OR WWW.ROOMSTOGO.COM
WITH SERVICE OR PARTS REPLACEMENT REQUEST

This product is manufactured by (LHDP) for ROOMS TO GO® | KIDS

Assembly Instructions:

Step 6.

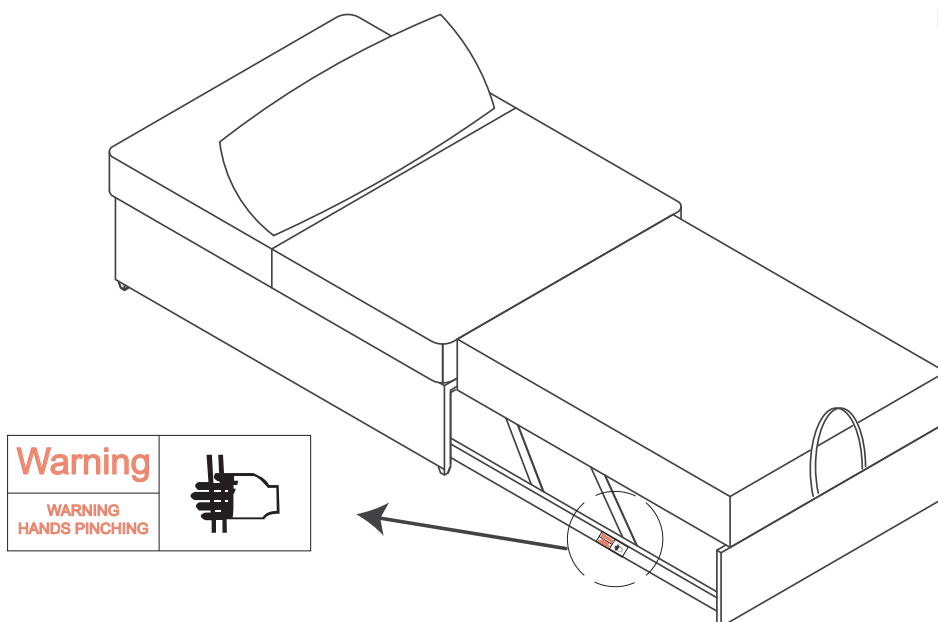


Or you can lean the back part back and pull the bottom part up to make a bed.

Assembly Instructions:

Step 7.

Maximum Weight 325 lbs



When opening and closing the bed, do not put your hand on the iron frame below, it may cut your hand.

DO NOT USE SUBSTITUTE PARTS. PLEASE CONTACT YOUR RETAIL STORE OR WWW.ROOMSTOGO.COM
WITH SERVICE OR PARTS REPLACEMENT REQUEST

This product is manufactured by (LHDP) for ROOMS TO GO® | KIDS