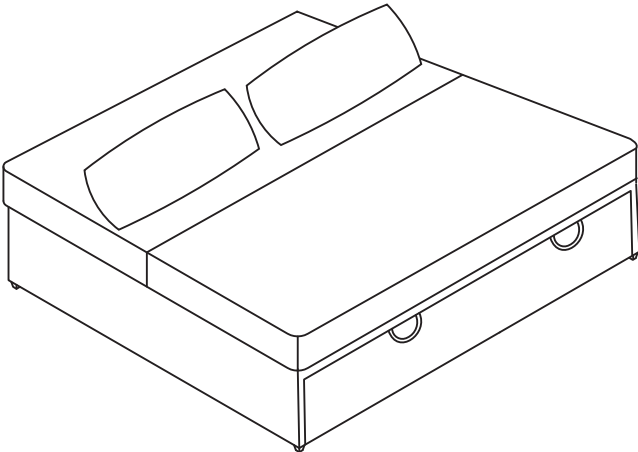


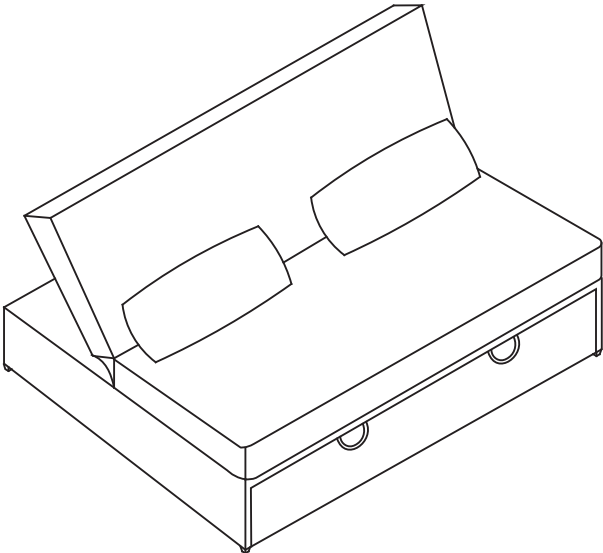
# NIMBLE XL 2.0

## CONVERTIBLE SLEEPER BED

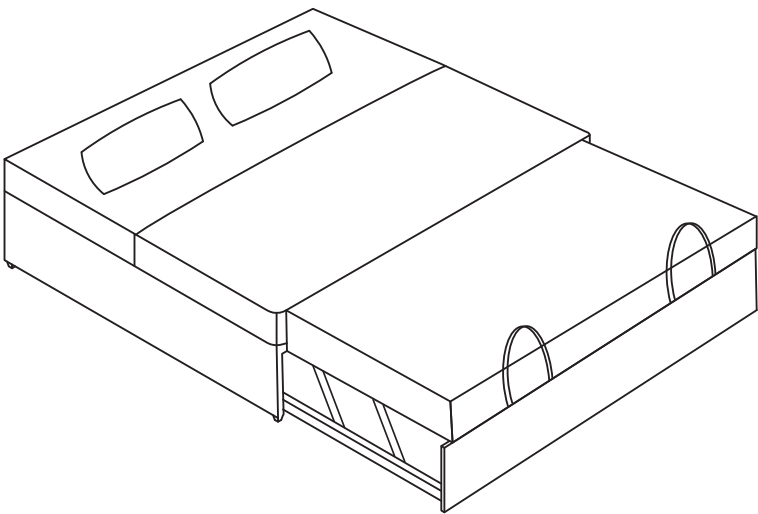
OPTION 1



OPTION 2



OPTION 3

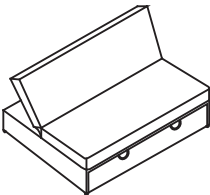







RTG SKU#	STYLE#	FINISH	ITEM DESCRIPTION
38323212	25C1011P54	BLUSH	XL CONVERTIBLE SLEEPER BED
38323224	25C1011N54	NATURAL	XL CONVERTIBLE SLEEPER BED
38323236	25C1011G54	LIGHT GRAY	XL CONVERTIBLE SLEEPER BED
38323248	25C1011B54	BLUE	XL CONVERTIBLE SLEEPER BED

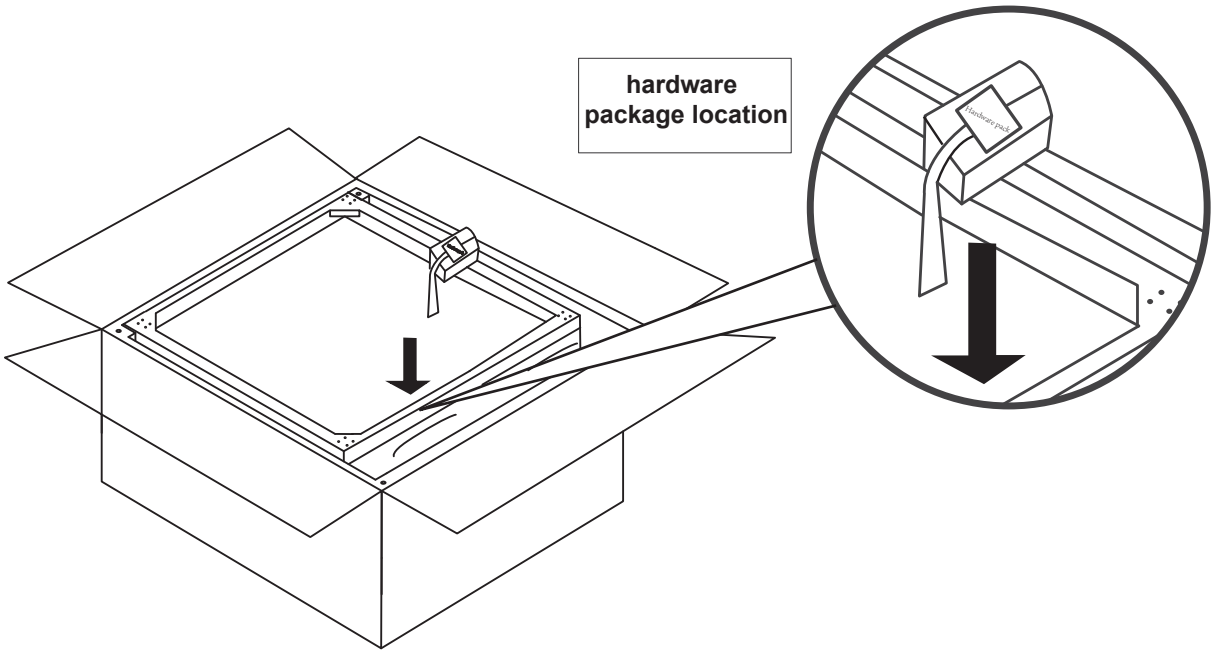
DO NOT USE SUBSTITUTE PARTS. PLEASE CONTACT YOUR RETAIL STORE OR [WWW.ROOMSTOGO.COM](http://WWW.ROOMSTOGO.COM) WITH SERVICE OR PARTS REPLACEMENT REQUEST

This product is manufactured by (LHDP) for ROOMS TO GO® | **KIDS**

Thank you for purchasing this quality product. Be sure to check all packing material carefully for small parts which may have come loose inside the carton during shipment. Identify and count all parts and compare with the part list below. Read all instruction before assembling and keep these instruction for future reference.

PART LIST			
#1		SOFA BED	01 PC
#2		LEG	4 PCS
#3		CASTER	4 PCS
#4		PILLOW	2 PCS

HARDWARE LIST			
A		BOLT Ø1/4"-20-x5/8"	16 PCS
B		ALLEN WRENCH M4*80	1 PC

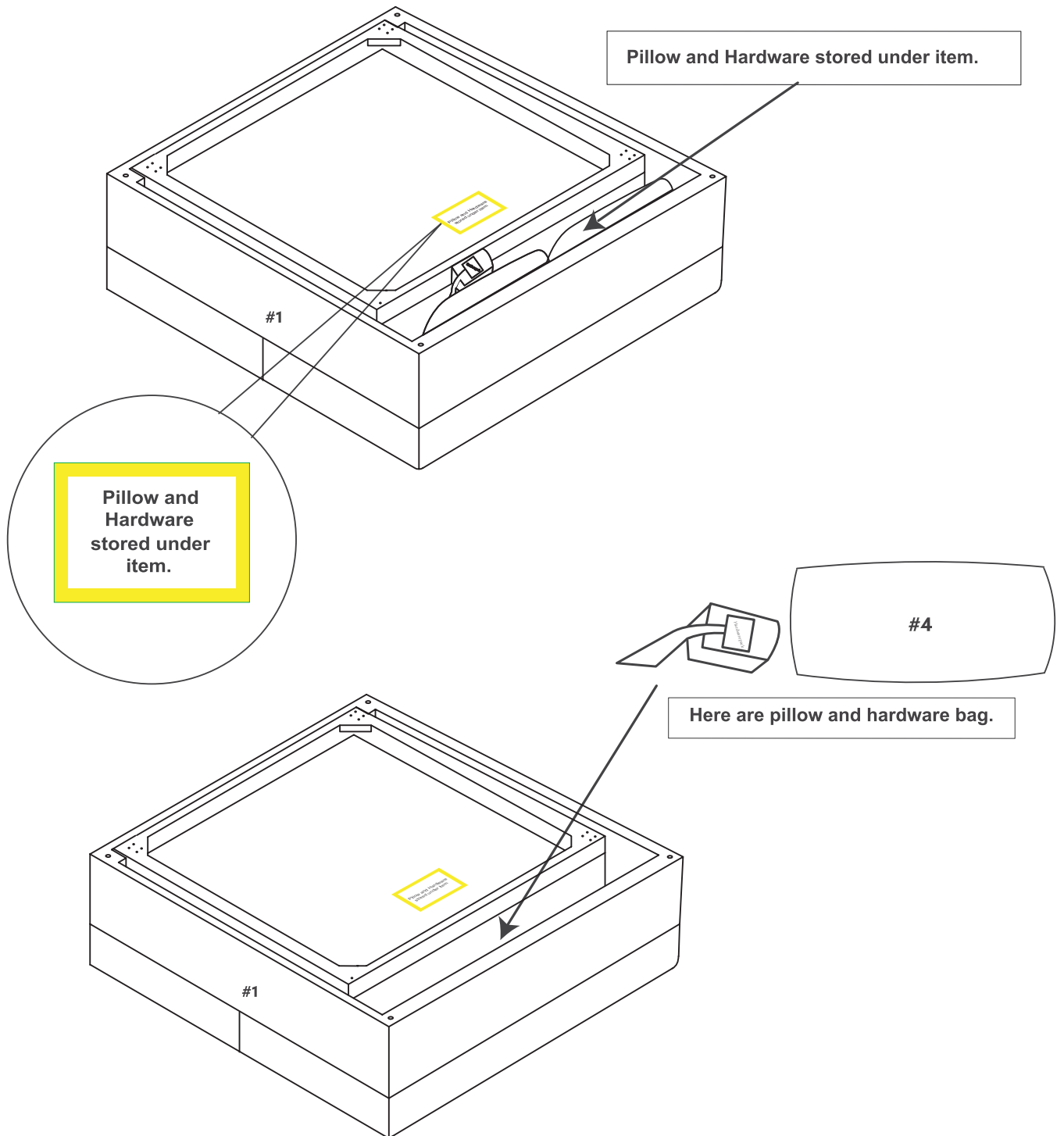


DO NOT USE SUBSTITUTE PARTS. PLEASE CONTACT YOUR RETAIL STORE OR [WWW.ROOMSTOGO.COM](http://WWW.ROOMSTOGO.COM) WITH SERVICE OR PARTS REPLACEMENT REQUEST

This product is manufactured by (LHDP) for ROOMS TO GO® | KIDS

## Assembly Instructions:

### Step 1.



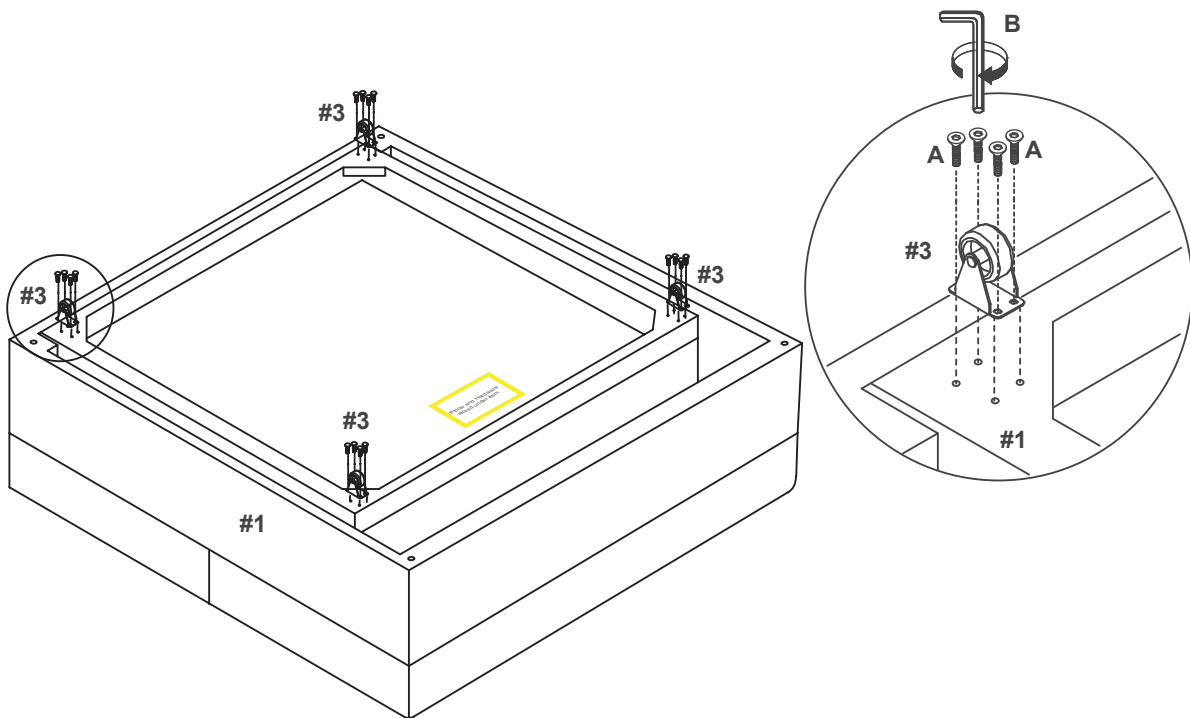
Laying the sofa bed(1) upside down. Take out the pillows(4) and hardware bag

DO NOT USE SUBSTITUTE PARTS. PLEASE CONTACT YOUR RETAIL STORE OR [WWW.ROOMSTOGO.COM](http://WWW.ROOMSTOGO.COM) WITH SERVICE OR PARTS REPLACEMENT REQUEST

This product is manufactured by (LHDP) for ROOMS TO GO® | **KIDS**

## Assembly Instructions:

### Step 2.



Use allen wrench(B) tighten bolts(A) to secure the casters(#3)

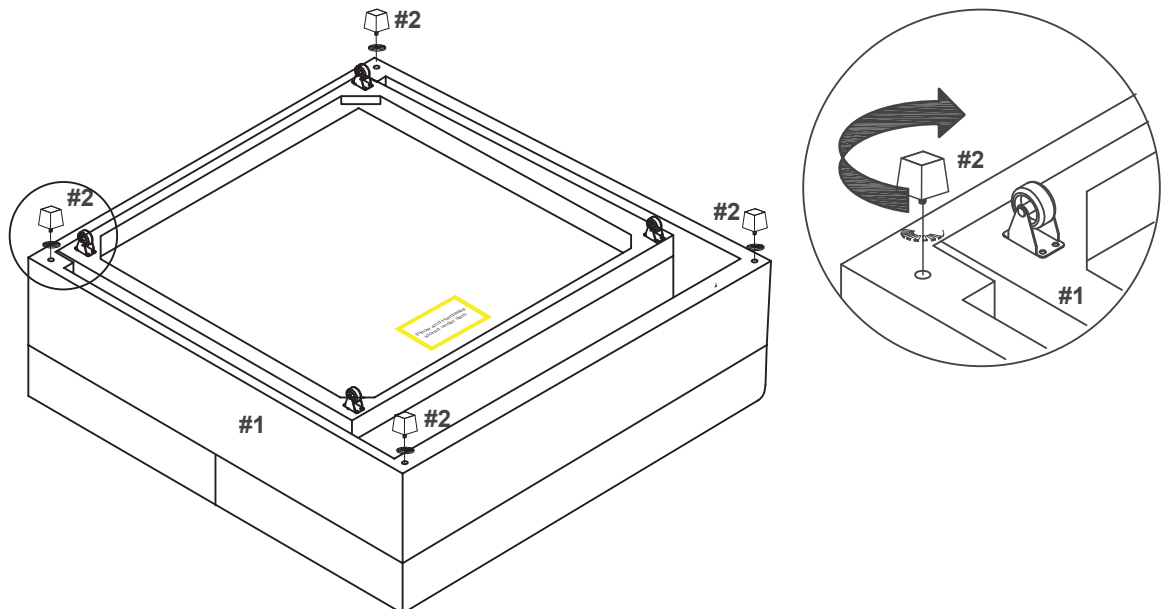
A



16

## Assembly Instruction:

### Step 3.



Attach the legs(#2) to the chair frame.

#2



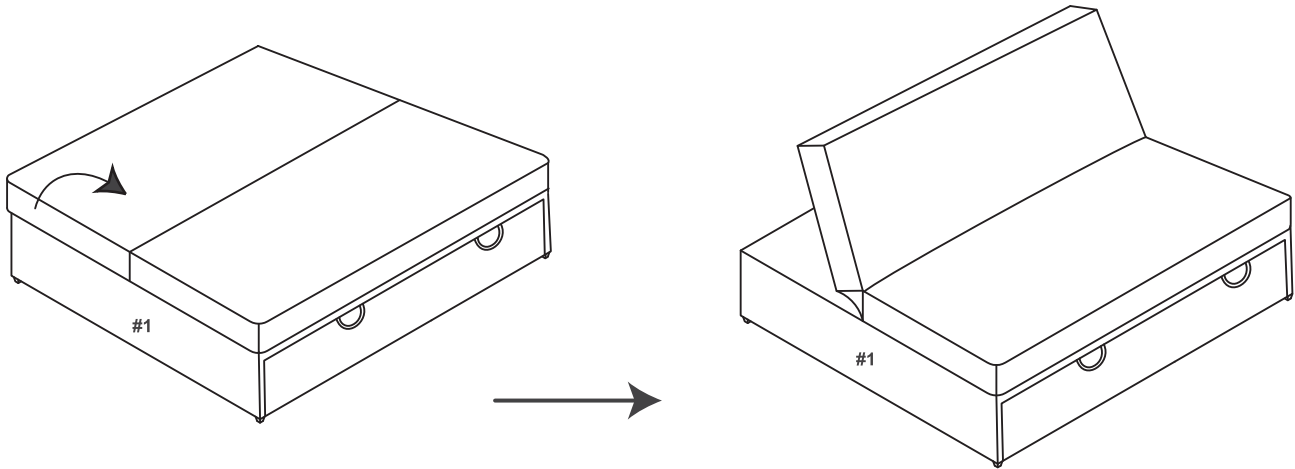
04

DO NOT USE SUBSTITUTE PARTS. PLEASE CONTACT YOUR RETAIL STORE OR [WWW.ROOMSTOGO.COM](http://WWW.ROOMSTOGO.COM) WITH SERVICE OR PARTS REPLACEMENT REQUEST

This product is manufactured by (LHDP) for ROOMS TO GO® | KIDS

## Assembly Instructions:

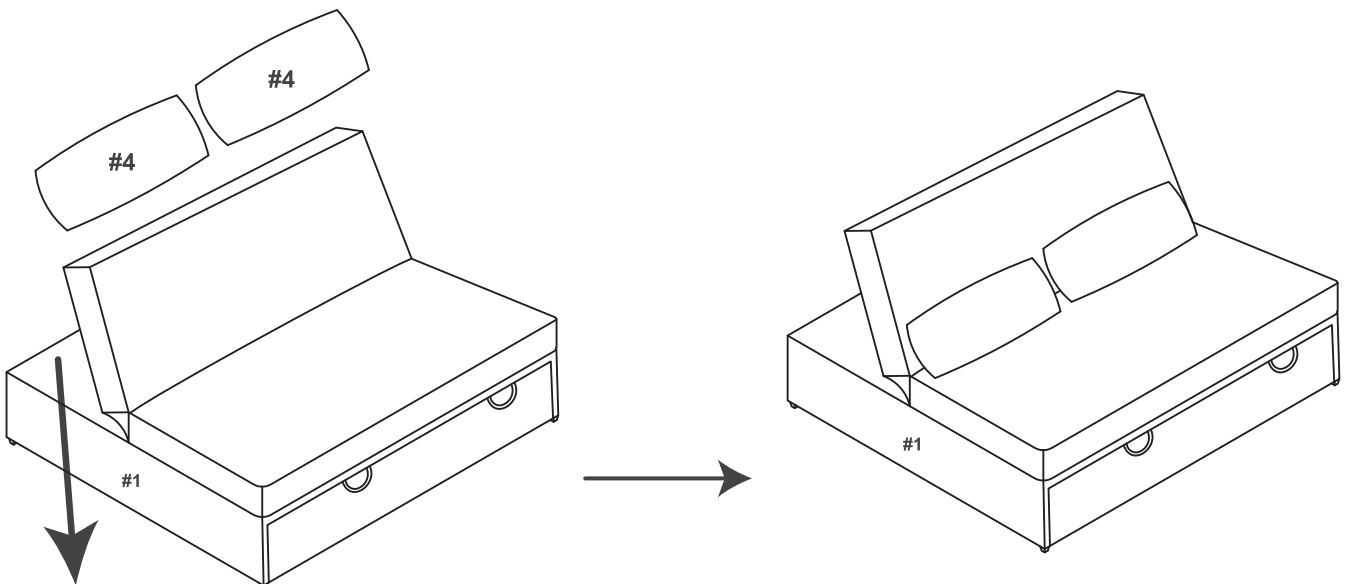
### Step 4.



Pull up the back of the chair to make it a recliner.

## Assembly Instructions:

### Step 5.



**Do Not Sit Here!**

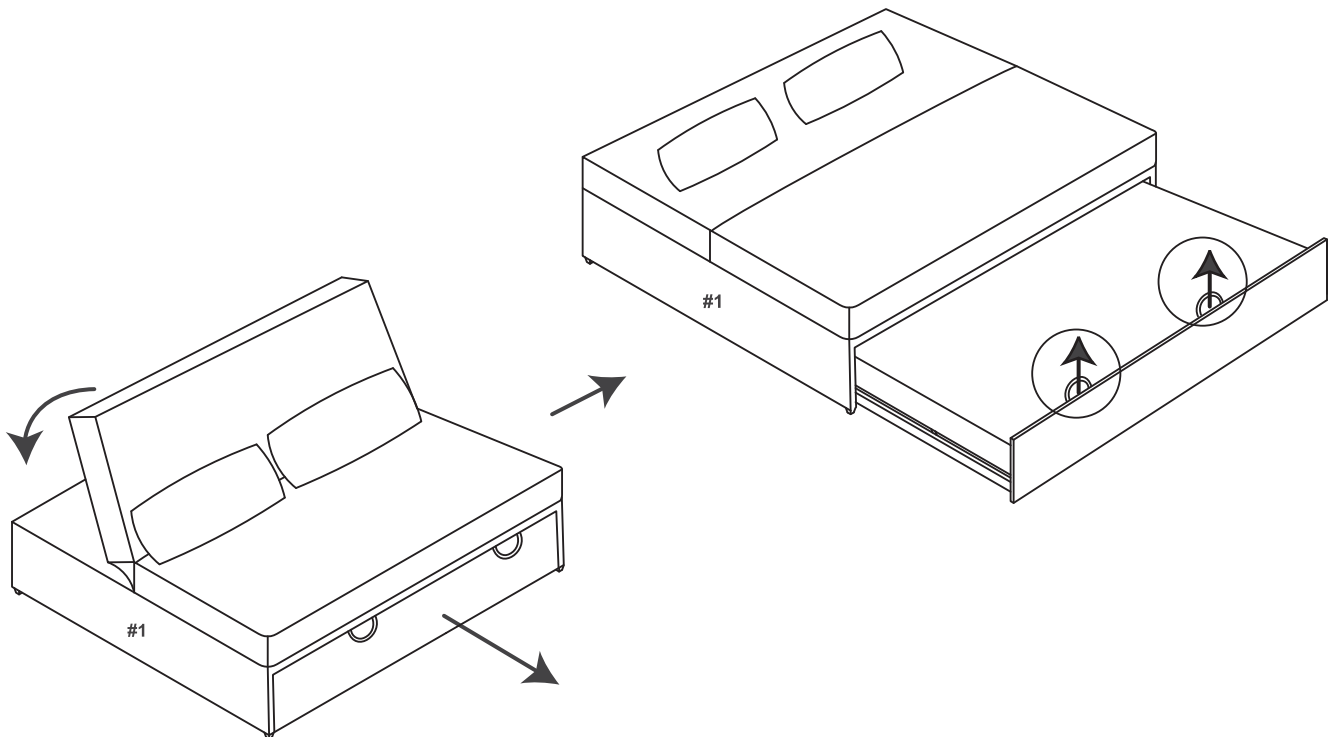
Then add pillows(4) and you're done

DO NOT USE SUBSTITUTE PARTS. PLEASE CONTACT YOUR RETAIL STORE OR [WWW.ROOMSTOGO.COM](http://WWW.ROOMSTOGO.COM)  
WITH SERVICE OR PARTS REPLACEMENT REQUEST

This product is manufactured by (LHDP) for ROOMS TO GO® | **KIDS**

## Assembly Instructions:

### Step 6.

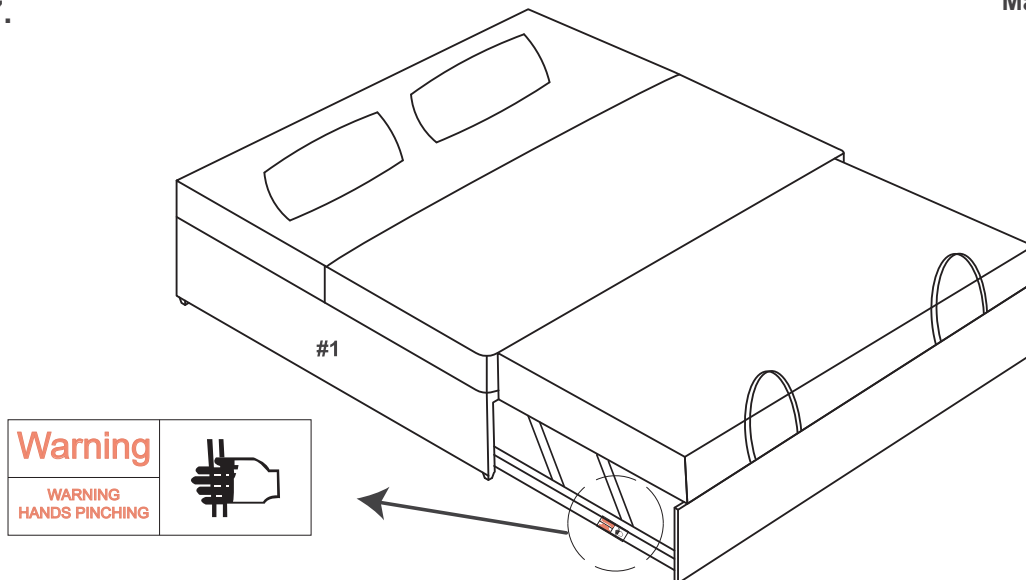


Or you can lean the back part back and pull the bottom part up to make a bed.

## Assembly Instructions:

### Step 7.

Maximum Weight 600 lbs



When opening and closing the bed, do not put your hand on the iron frame below, it may cut your hand.

DO NOT USE SUBSTITUTE PARTS. PLEASE CONTACT YOUR RETAIL STORE OR [WWW.ROOMSTOGO.COM](http://WWW.ROOMSTOGO.COM) WITH SERVICE OR PARTS REPLACEMENT REQUEST

This product is manufactured by (LHDP) for ROOMS TO GO® | KIDS