



Assembly Instructions

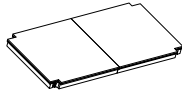
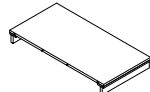
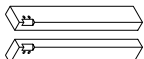
RETG 1421-20 DINING TABLE - SKU# 42114215

Manufactured by RETG for Rooms To Go


Version#1 - 09/04/2024

***** Caution : Please read all instructions carefully before starting the assembly process. These parts are cumbersome and heavy. Therefore, two people are recommended in order to prevent personal injury and insure the parts are not damaged during the assemble.**

PARTS LIST

No.	Description	Sketch	Q'ty
1	Table Top		1 Pc
2	Table Leaf		1 Pc
3	Legs (Left & Right)		4 Pcs

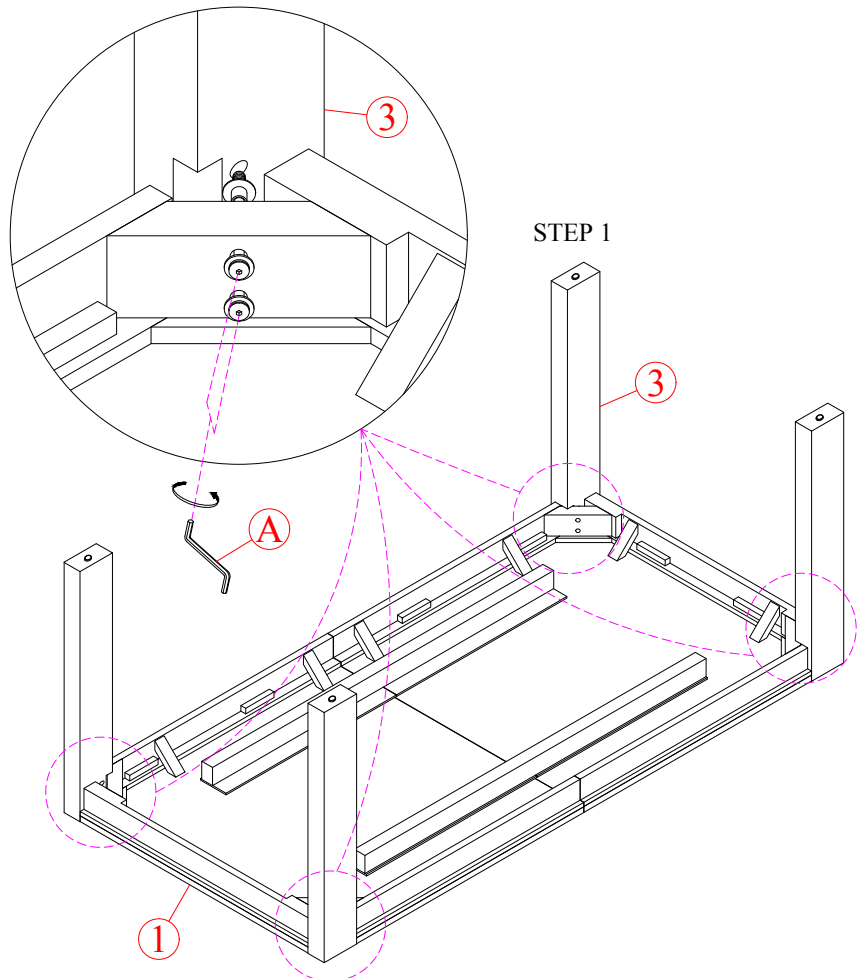
HARDWARE LIST

No.	Description	Zize	Sketch	Q'ty
A	Allen Key Z	M4		1 Pc

Remark:

+ *Do not fully tighten all bolts until assembly is complete*

STEP 1: Flip the table top (1) upside down. Place a blanket or some form of padding underneath of the top when placing on a hard surface to avoid scratches. Place legs so that it fits the predetermined pin holes in back panel of table top. Use an Allen key to tighten the bolts which were pre-installed on the table corners.



Hardware Pack Location (s):

RETG 1421-20 DINING TABLE - SKU# 42114215



Assembly Instructions

RETG 1421-20 DINING TABLE - SKU# 42114215

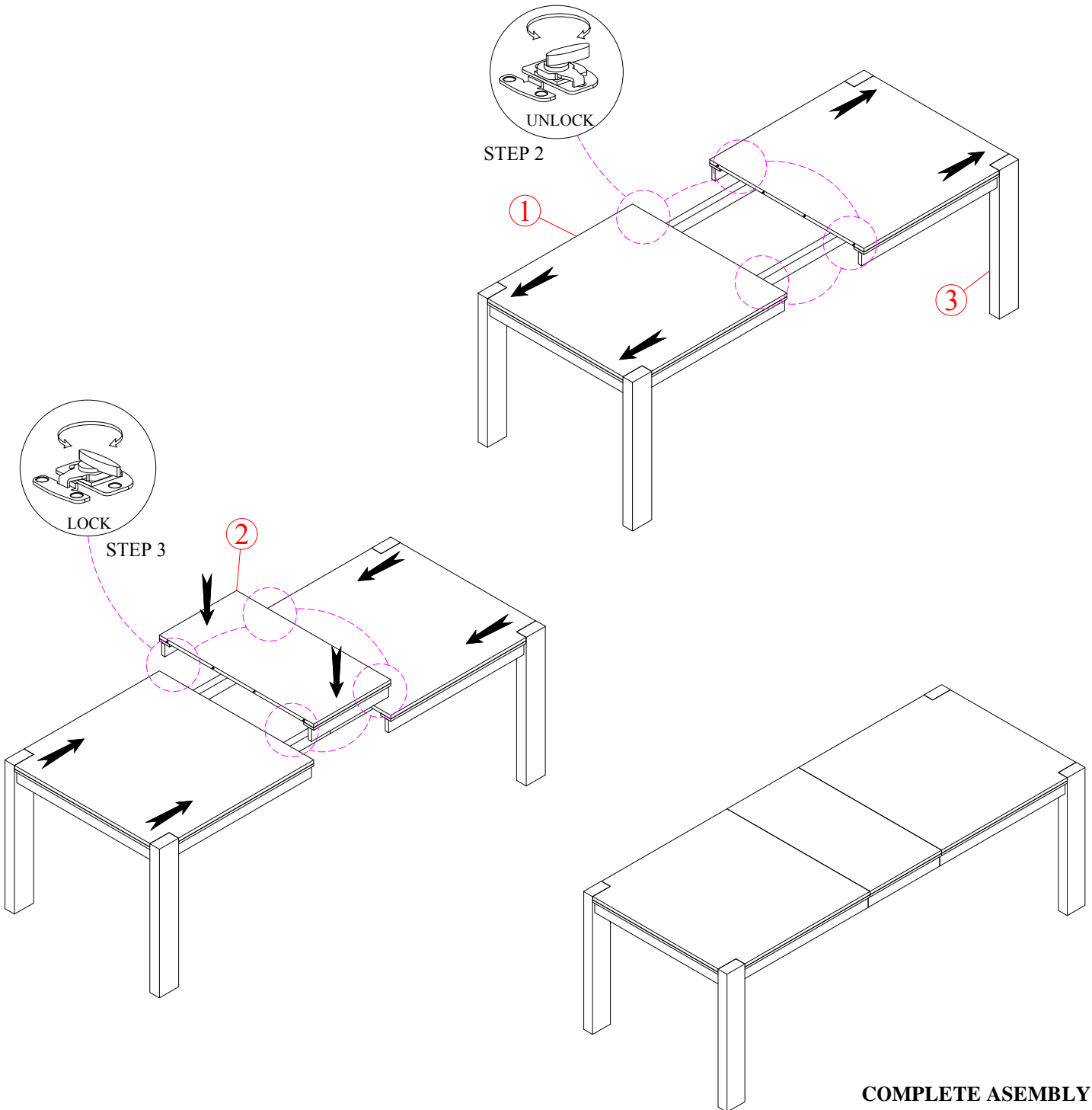
Manufactured by RETG for Rooms To Go

Version#1 - 09/04/2024

***** Caution : Please read all instructions carefully before starting the assembly process. These parts are cumbersome and heavy. Therefore, two people are recommended in order to prevent personal injury and insure the parts are not damaged during the assemble.**

STEP 2: Turn the assembled table upright now. Unlock the latches underneath the table top and open the table top wide enough to make sure the table leaf can be placed.

STEP 3: Set the table leaf in, push the table top tightly together. Then lock of latches underneath.



Hardware Pack Location (s):

RETG 1421-20 DINING TABLE - SKU# 42114215