

Sofia Vergara
COLLECTION





Assembly Instructions




NAJA DTAMADT
42173017 7301-1 LEG TABLE PEWTER

Thank you for purchasing this quality product. Be sure to check all packing materials carefully for small parts, which may have come loose inside the carton during shipment. Identify and count all parts and compare with the **HARDWARE LIST** below.

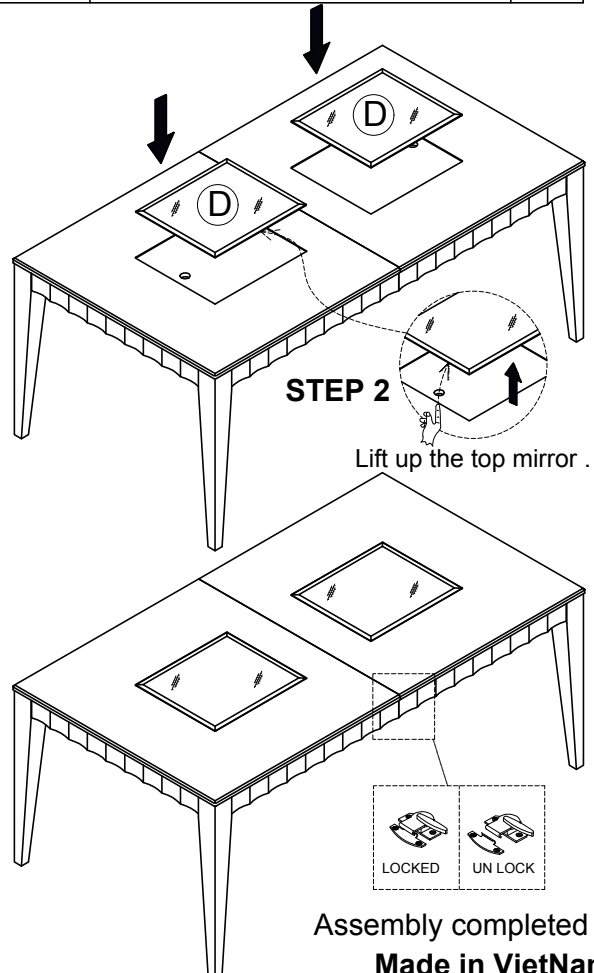
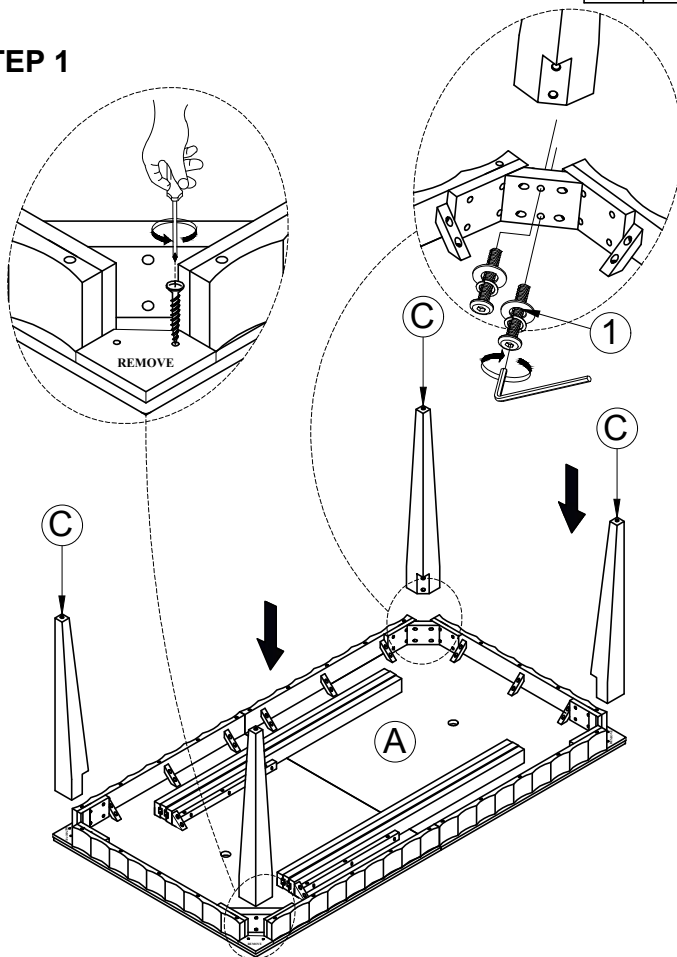
Caution: Please read instructions thoroughly before unpacking assembly parts.

1. We recommend that you assemble this product with the assistance of another person; this will make assembly easier, and will help to eliminate damage to the product or injury to persons during assembly.
2. Please do not over tighten screws or bolts until the assembly is completed.
3. Please put all parts on a non-abrasive floor before assembly, and follow the assembly steps to assemble your newly purchased product correctly and efficiently.

NO.	PARTS LIST		Q'TY
A		Top panel	1
B		Leaf	1
C		Legs	4
D		Glass top	2

TOOLS REQUIRED (NOT PROVIDED)			
		Philips Screw Driver	
NO.	HARDWARE LIST		Q'TY
1		Ø5/16"x13x2-3/4"L Bolt	8
		Ø5/16"xØ13x2mm Spring washer	
		Ø5/16"xØ22x2mm T Flat washer	
		Allen wrench (4mm)	1

STEP 1



Assembly completed 1
Made in VietNam