

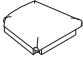

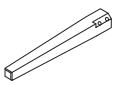








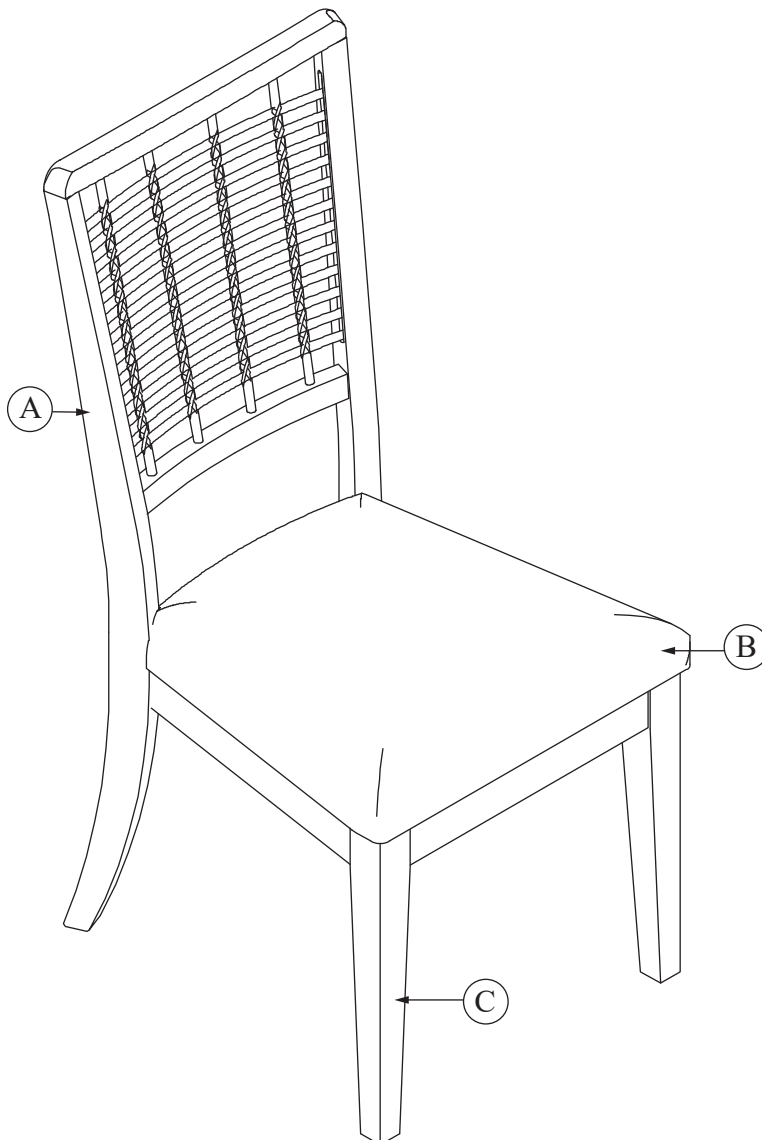


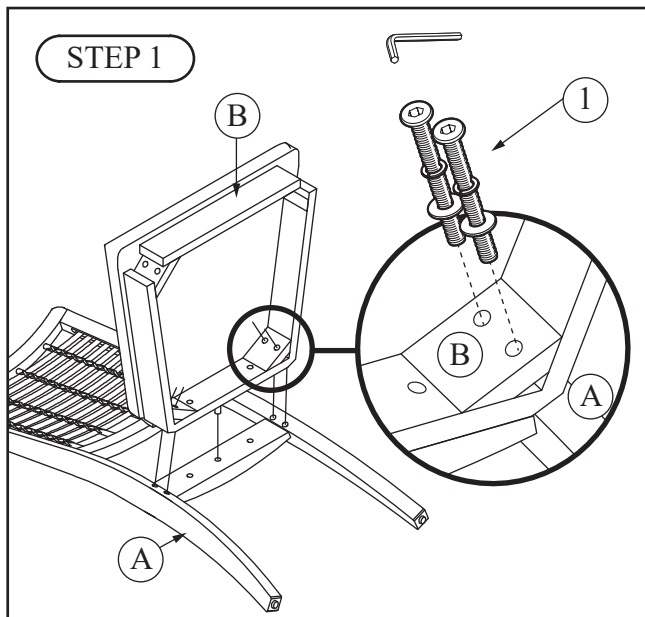
Thank you for purchasing this quality product. Be sure to check all packing material carefully for small parts which may have come loose inside the carton during shipment. Identify and count all parts and compare with the Hardware List below:

No.		Parts List	Qty.	Step		Hardware List	Qty.
A		Back	1	1		Φ1/4" * 18 * 2-3/4" L Allen Bolt	4
B		Seat	1			Φ1/4" * 13 Spring Washer	
C		Legs	2	2		Φ1/4" * 19mm * 2mmT Flat Washer	2
						Allen Wrench (4mm)	
				3		Φ1/4" * 18 * 1-3/4" L Allen Bolt	4
						Φ1/4" * Φ13 Spring Washer	
						Φ1/4" * Φ19mm * 2mmT Flat Washer	
				3		Φ1/4" * 18 * 2-3/4" L Allen Bolt	4
						Φ1/4" * Φ13 Spring Washer	
						Φ1/4" * Φ19mm * 2mmT Flat Washer	

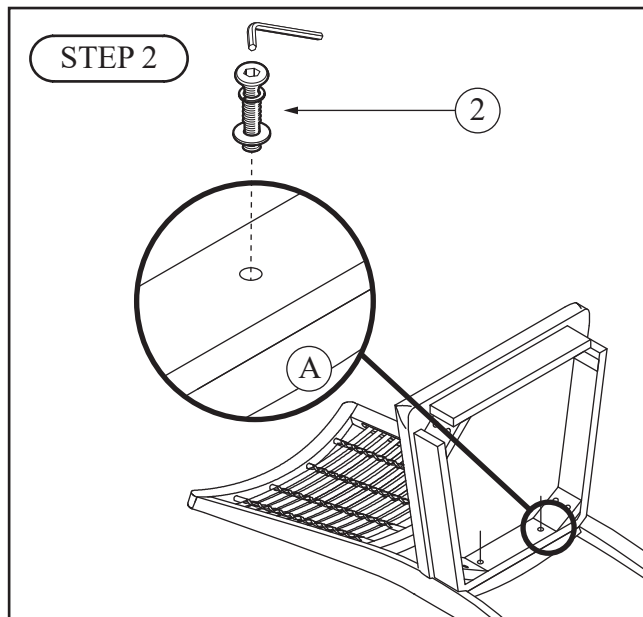


## ASSEMBLY STEP

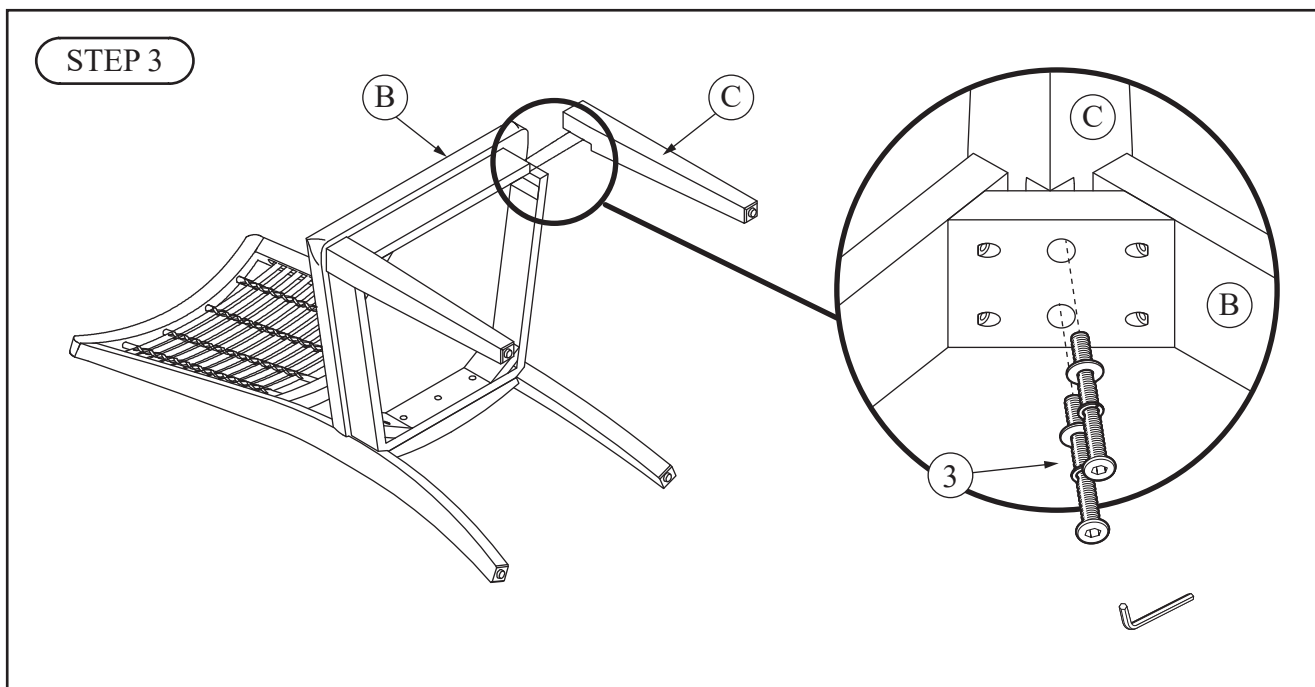
\*\*\*Caution: Please read all instructions carefully before starting the assembly process. These parts are cumbersome and heavy. Therefore, two people are recommended in order to prevent personal injury and insure the parts are not damaged during the assembly.



Begin assembly by attaching Seat (B) to Back (A) using 2 Allen Bolts, 2 Spring Washers, and 2 Flat Washers per side.



Secure Seat (B) to Back (A) using 3 Allen Bolts, 3 Spring Washers, and 3 Flat Washers.



Attach Legs (C) to Seat (B) using 2 Allen Bolts, 2 Spring Washers, and 2 Flat Washers per leg. Tighten bolts using Allen Wrench provided. The assembly is now complete.