

ASSEMBLY INSTRUCTIONS

MODEL: 5874



PONG 5874 SIDE CHAIR

42458744

42658748

SKU # 42758740

5874-2

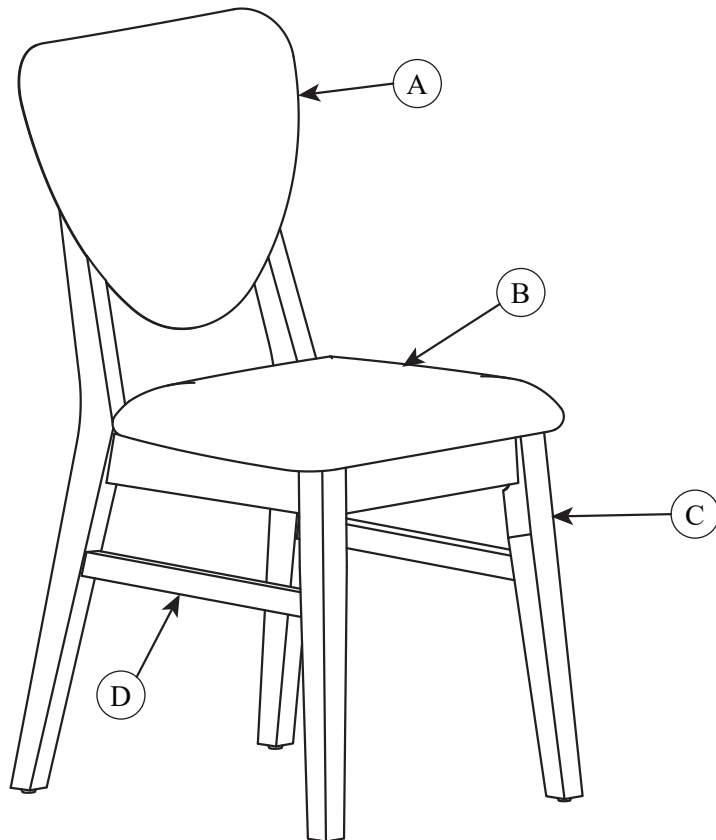
5874-6

5874-7

Thank you for purchasing this quality product. Be sure to check all packing material carefully for small parts. Which may have come loose inside the carton during shipment. Identify and count all parts and compare with the hardware list as below:

	No.	Picture	Description	Dimension	Qty
HARDWARE LIST	①		JCBB (M8) with washer	8 x P1.25 x 45 mm	3 pcs
	②		JCBB (M8) with washer	8 x P1.25 x 90 mm	4 pcs
	③		JCBB (M8) with washer	8 x P1.25 x 60 mm	4 pcs
	④		Screw (M4)	4 x 38 mm	4 pcs
	⑤		Allen Key M5	5 x 65 mm	1 pc

	No.	Description	Qty
PART LIST	Ⓐ	Back Rest	1 pc
	Ⓑ	Seat Base	1 pc
	Ⓒ	Front Leg	1 set
	Ⓓ	Stretcher	1 set

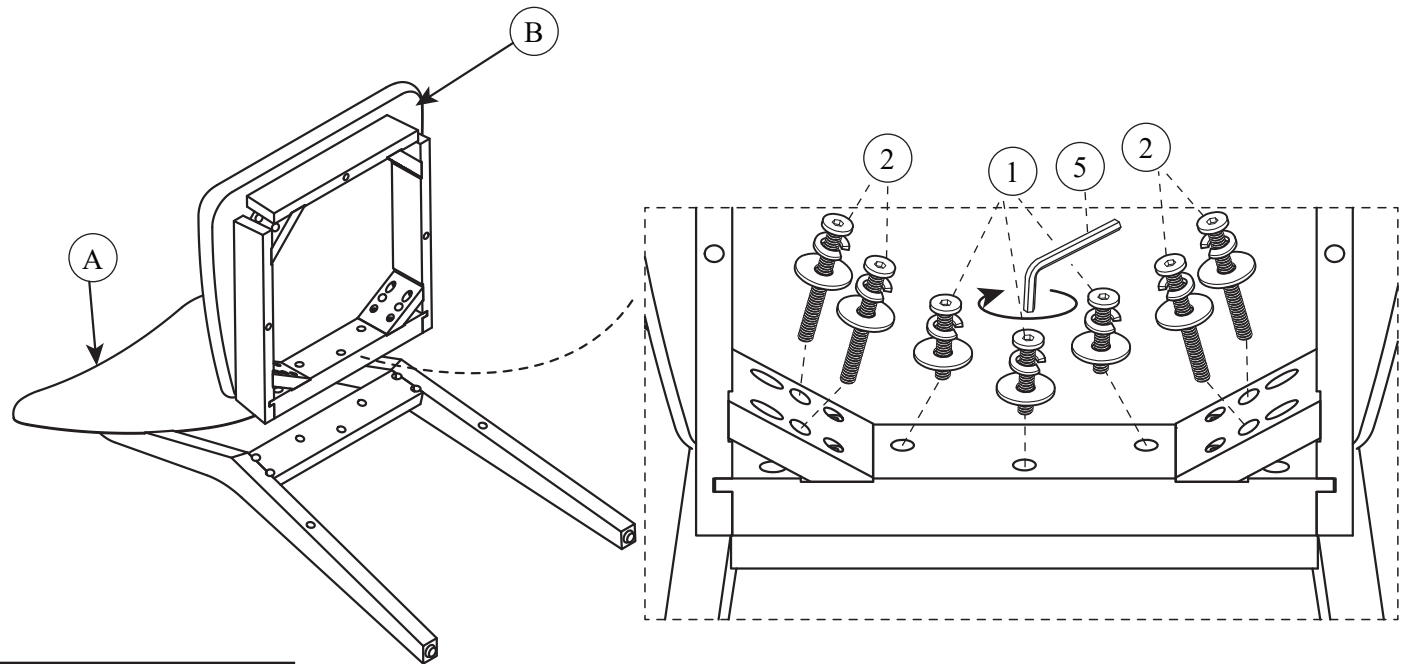


PART DETAILS

Assembly Steps

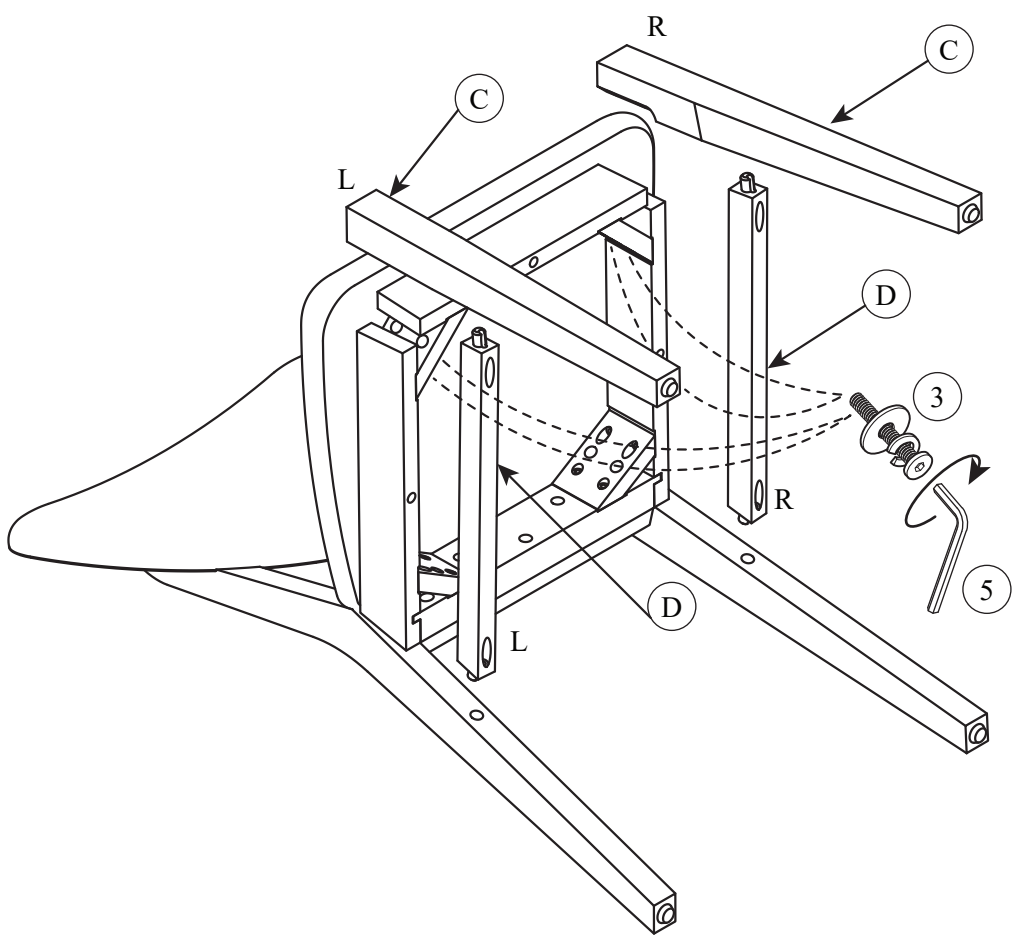
STEP 1

Attach the seat base to the back rest. **DO NOT FULLY-TIGHTEN THE BOLTS UNTIL STEP 4.**
(NOTE: USE HARDWARE Num. 1 & 2)



STEP 2

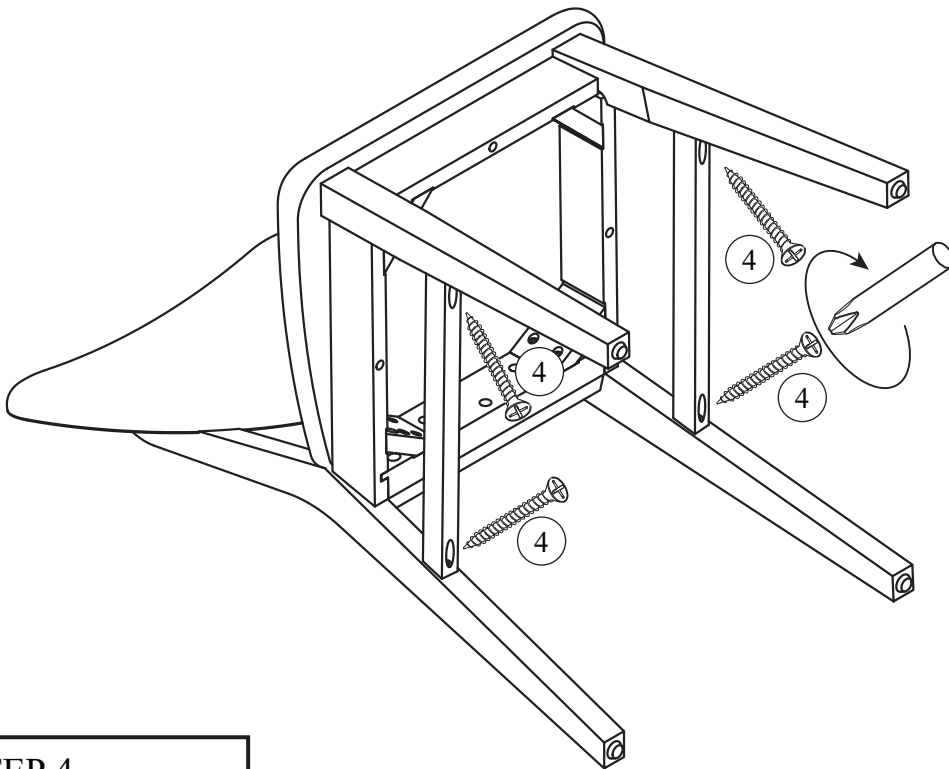
Attach the front leg & side stretcher as shown. **DO NOT FULLY-TIGHTEN THE BOLTS UNTIL STEP 4.**
(NOTE: USE HARDWARE Num. 3)



Assembly Steps

STEP 3

Please make sure to tighten the screw to the side stretcher as shown. Screw driver or drill machine not provided.
(NOTE: USE HARDWARE Num. 4)



STEP 4

Turn up the chair, place it on level ground. Make sure the chair are not wobbling before fully-tighten all bolts in step 1 & step 2.

