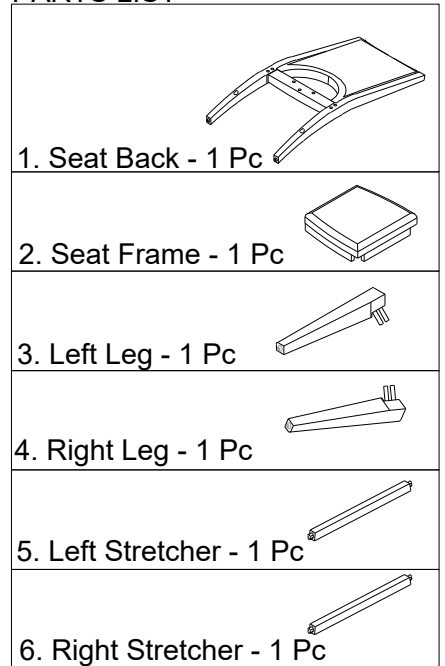
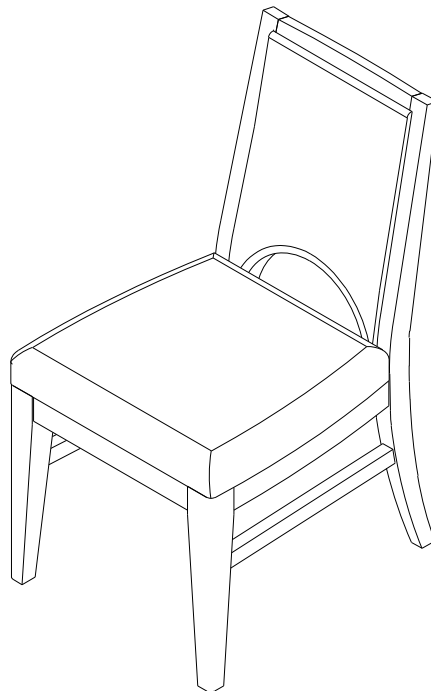


PARTS LIST

Step	Code	Hardware	Q'TY
	A	Allen key 4mm dia.	1 Pc
	B	Wrench 1/2"	1 Pc
1	C	Bolt 5/16" -18 x 3-1/4 "	4 Pcs
		Flat Washer 5/16" x 19 x 1.5mm	4 Pcs
		Spring Washer 5/16" x 13 x 1.2mm	4 Pcs
2	D	Bolts 1/4"- 20 x 1-3/4 "	3 Pcs
		Flat Washer 5/16" x 19 x 1.5mm	3 Pcs
		Spring Washer 5/16" x 13 x 1.2mm	3 Pcs
3	E	Nut 5/16" x 13 mm	4 Pcs
		Flat Washer 5/16" x 19 x 1.5mm	4 Pcs
		Spring Washer 5/16" x 13 x 1.2mm	4 Pcs
4	F	Screw 4 x 1 3/4"	4 Pc



Tool Required: Phillips screwdriver
(not provided)



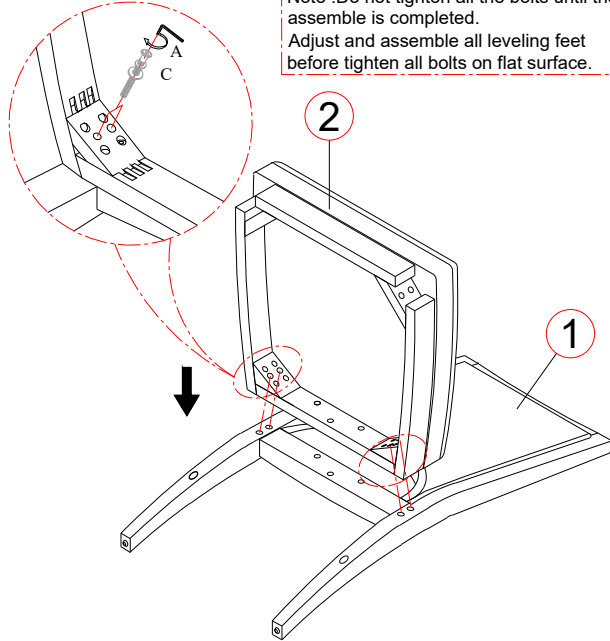
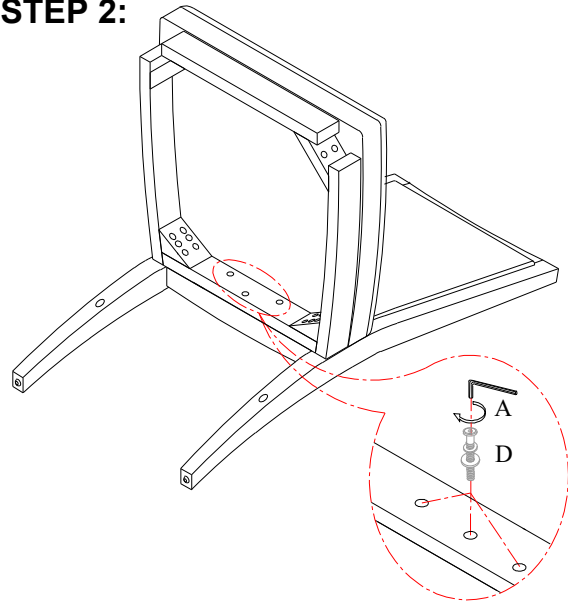
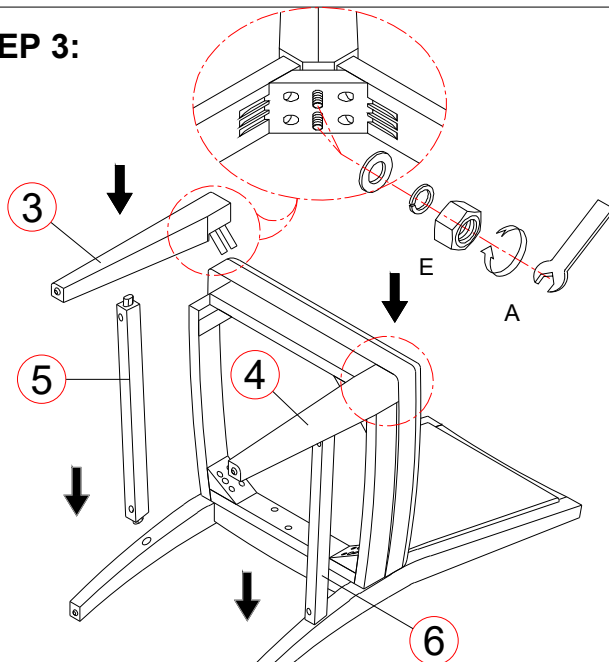
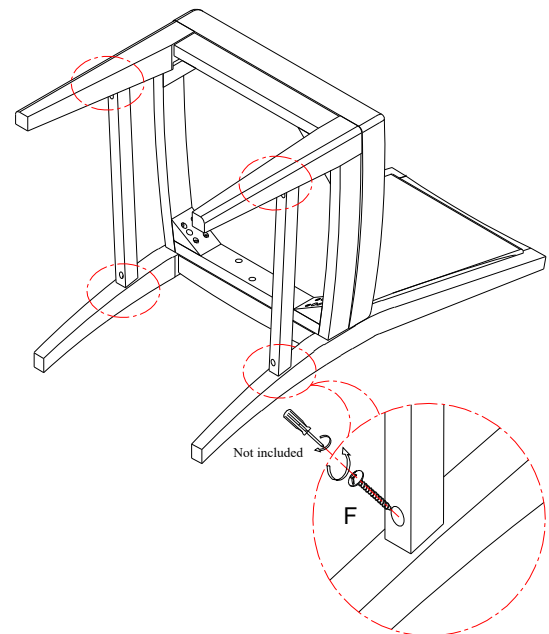
Hardware Pack Locations:

5880-64 Side chair w/ uph seat ,SKU# 42458807

***Cautions: Please read all instructions carefully before starting the assembly process. These parts are cumbersome and heavy. Therefore, two people are recommended in order to prevent personal injury and ensure the parts are not damaged during the assembly.

STEP 1:

Note :Do not tighten all the bolts until the assemble is completed.
Adjust and assemble all leveling feet before tighten all bolts on flat surface.

**STEP 2:****STEP 3:****STEP 4:****Hardware Pack Locations:**

5880-64 Side chair w/ uph seat ,SKU# 42458807