



Manufactured for Rooms To Go

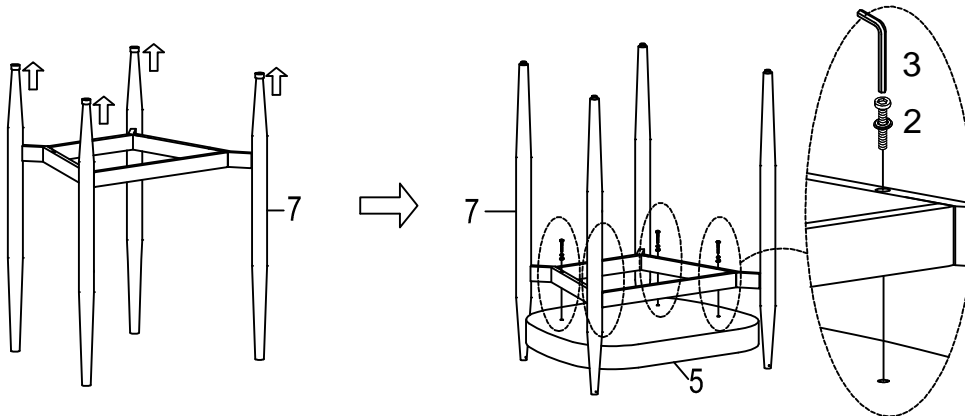
SKU:42461210 TEAE 6121-SC SIDE CHAIR ASSEMBLY INSTRUCTION

Thank you for purchasing this quality product. Be sure to check all packing material carefully for small parts which may have come loose inside the carton during shipment. Identify and count all parts and compare with the Parts list below:

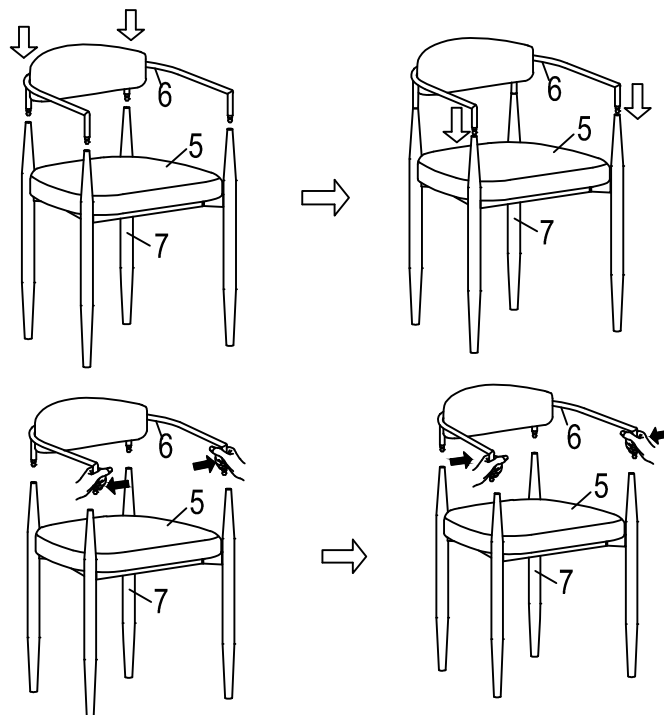
NO.	PART	DESCRIPTION	Q. TY
1		Bolt:M4*4mm	4
2		Bolt:M6*54mm	4
3		Allen wrench:M4	1
4		Allen wrench:M2	1

5		Seat	1
6		Backrest	1
7		Metal frame	1

Step1



Step2

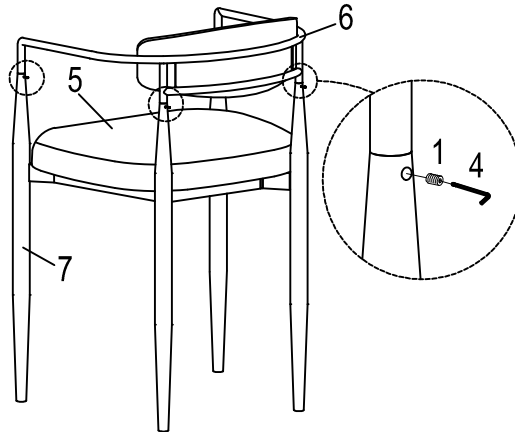


Noted: If the metal on both sides of the armrest of the Backrest 6 is not aligned with the holes on the Metal frame 7, please gently use your hand to force them

MADE IN CHINA

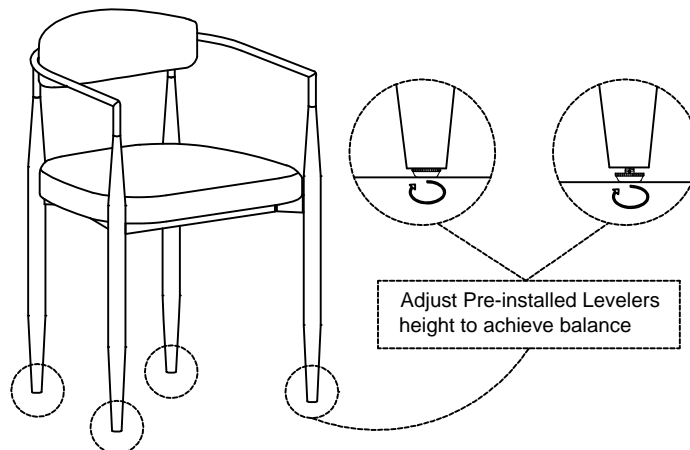
SKU:42461210
TEAE 6121-SC SIDE CHAIR
ASSEMBLY INSTRUCTION

Step3



Step4

Finish



ASSEMBLY INSTRUCTION

- 1) Carefully unwrap the furniture and place all parts on a clean soft blanket
- 2) First remove the rubber packaging cover, and then Place the Seat 7 facedown on a clean, non-marring surface. Using Bolt 2 with the Allen Wrench 3 to fasten Seat 5 and Metal frame 7 as step 1.
- 3) Insert the Backrest 6 onto the Metal frame 7 as step 2.
- 4) Using the Bolts 1 with the Allen Wrench 4 to fasten Backrest 6 and Metal frame 7 as step 3.
- 5) With assistance from your adult partner, turn chair into upright position.
Adjust the Pre-installed Levelers at the bottom of Metal frame 7 until the Chair is level with the ground.
- 6) Enjoy your chair for a long time to come.