



# ASSEMBLY INSTRUCTION

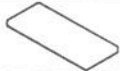



BENCH

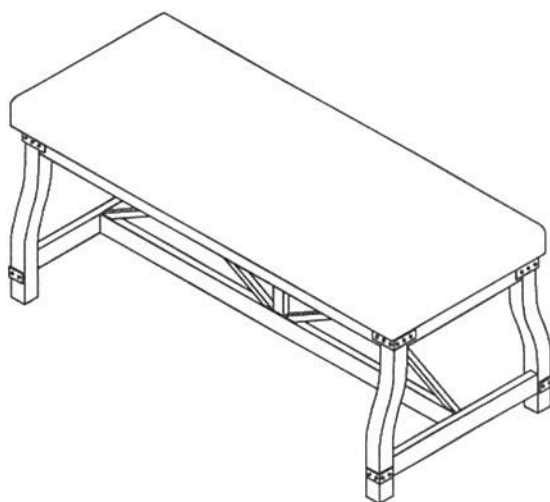
SKU# 42575057

PAGE 1 OF 2

\*\*\* Caution : please read all instructions carefully before starting the assembly process. These parts are cumbersome and heavy. Therefore, two people are recommended in order to prevent personal injury and insure the parts are not damaged during the assembly.

Hardware List			
NO.	HARDWARE		QTY
1		BOLT (1/4"×15×5/8") LOCK WASHER (1/4") FLAT WASHER (1/4"×13MM)	16
2		WOOD SCREW(5×8×20mm)	10
3		4MM HEX WRENCH	1
4		Phillips Screwdriver(not provided)	1

Parts List			
NO.	DESCRIPTION	DRAWING	QTY
A	Seat cushion		1pc
B	Leg		2pcs
C	Stretcher		1pc
D	Connecting Frame		2pcs



NOTE:DO NOT FULL TIGHTEN BOLTS UNTIL PARTS COMPLETE ASSEMBLED

Cleaning instructions:Clean using soft cloth

Made in China



# ASSEMBLY INSTRUCTION

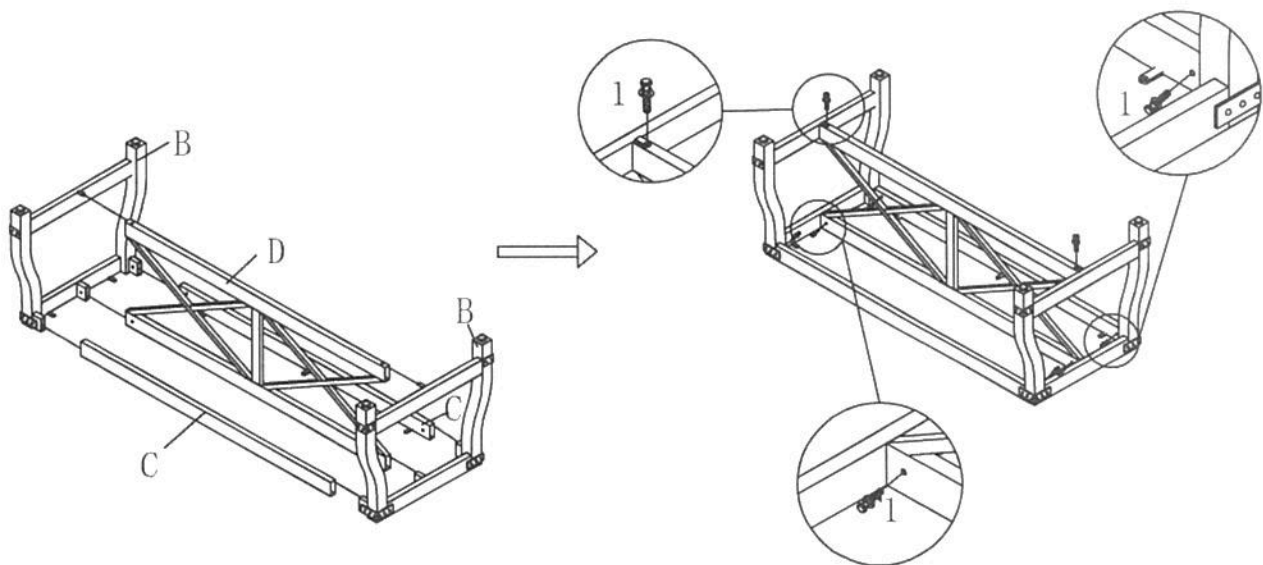
BENCH

SKU# 42575057

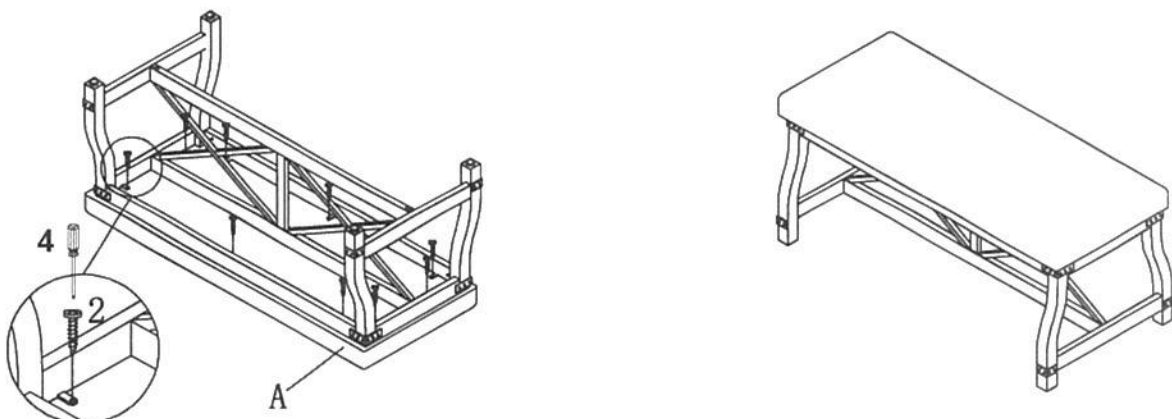
PAGE 2 OF 2

\*\*\* Caution : please read all instructions carefully before starting the assembly process. These parts are cumbersome and heavy. Therefore, two people are recommended in order to prevent personal injury and insure the parts are not damaged during the assembly.

STEP : 1 Insert stretcher (C) and connecting frame (D) into leg (B) first at the same time . This is very important . Then screw bolts (1) as figure showed .



STEP : 2 Assemble base with cushion by screw (2)



NOTE:DO NOT FULL TIGHTEN BOLTS UNTIL PARTS COMPLETE ASSEMBLED

Cleaning instructions:Clean using soft cloth

Made in China