



# Assembly Instructions

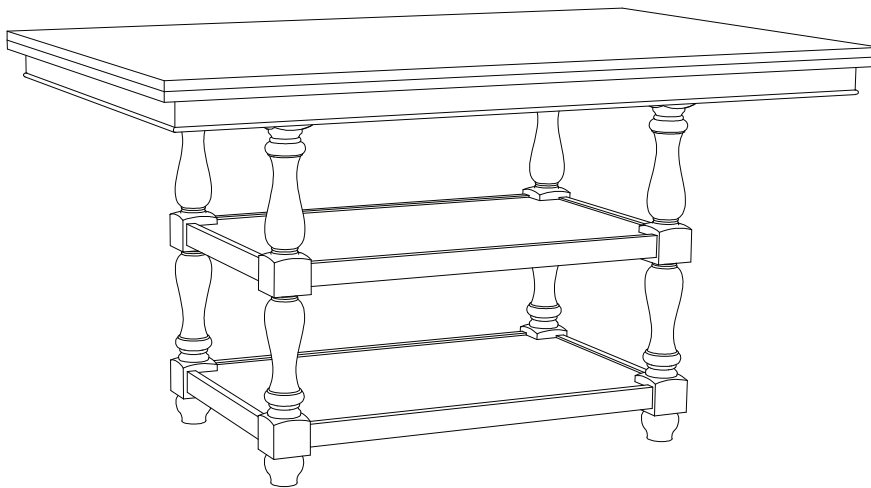
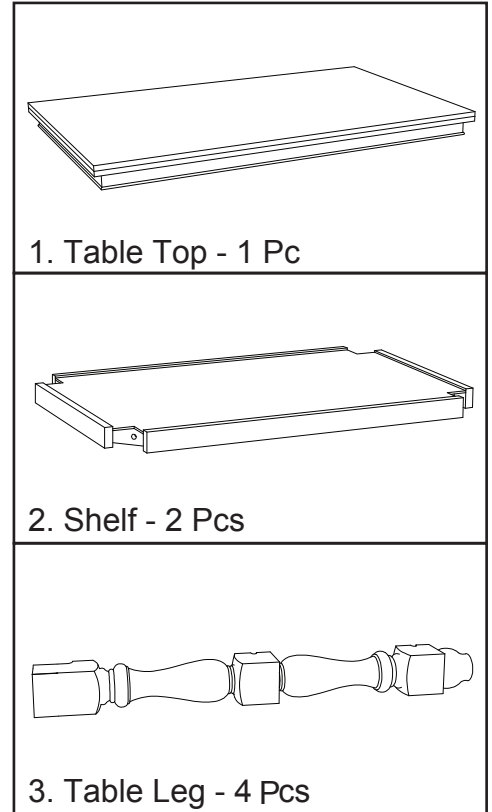
PNWD

D190-GT COUNTER HEIGHT TABLE

SKU# 43201906

Step	Code	Hardware	Q'TY
	A	Allen Key 4 mm dia.	1 Pc
1	B	Spring Washer 5/16" dia.	8 Pcs
		Flat Washer 5/16" dia.	
		Allen Bolt 5/16" x 2 1/2"	
2	B	Spring Washer 5/16" dia.	4 Pcs
		Flat Washer 5/16" dia.	
		Allen Bolt 5/16" x 2 1/2"	
3	B	Spring Washer 5/16" dia.	4 Pcs
		Flat Washer 5/16" dia.	
		Allen Bolt 5/16" x 2 1/2"	

## PARTS LIST



### HARDWARE PACK LOCATION(S):

PNWD

COUNTER HEIGHT TABLE

SKU # 43201906



# Assembly Instructions

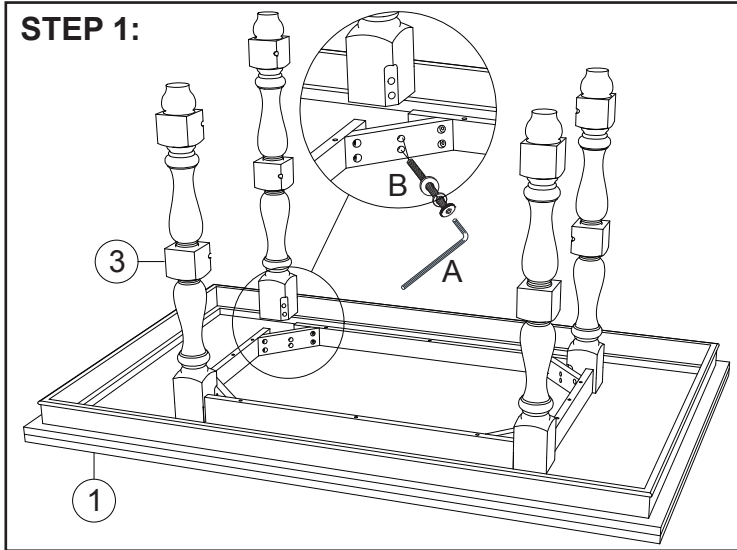
PNWD

D190-GT COUNTER HEIGHT TABLE

SKU# 43201906

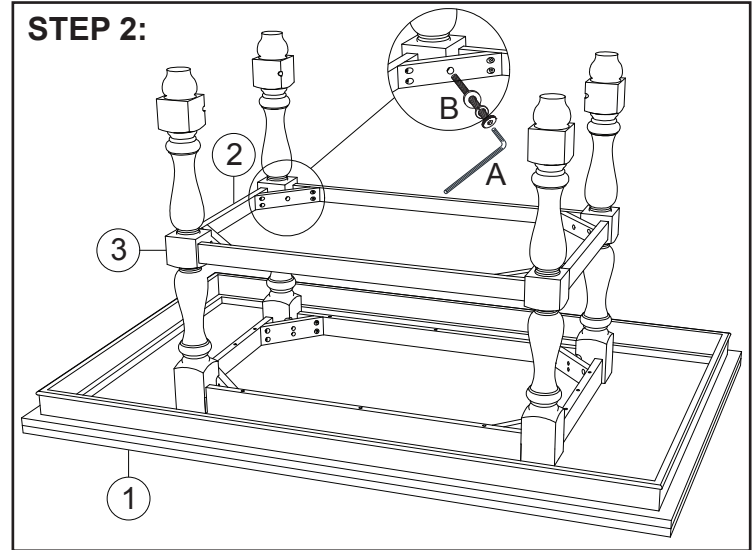
\*\*\*Cautions: Please read all instructions carefully before starting the assembly process. These parts are cumbersome and heavy. Therefore, two people are recommended in order to prevent personal injury and insure the parts are not damaged during the assembly.

## STEP 1:



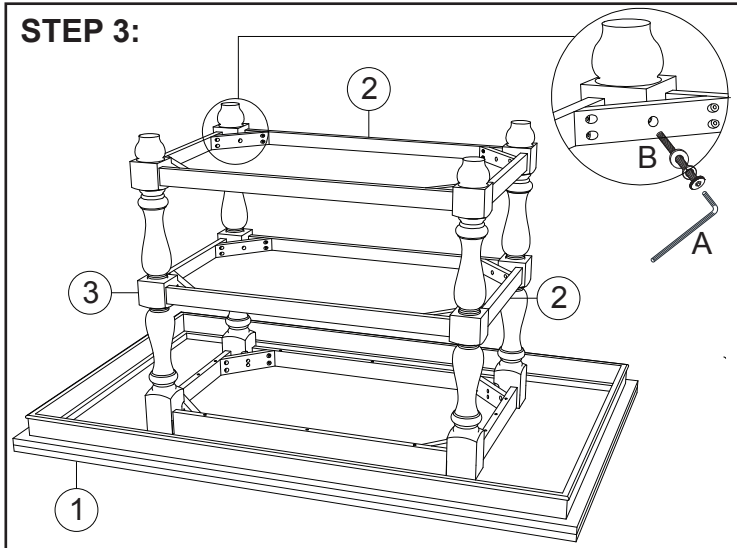
Place the table top upside down. Attach the table legs to the table top.

## STEP 2:



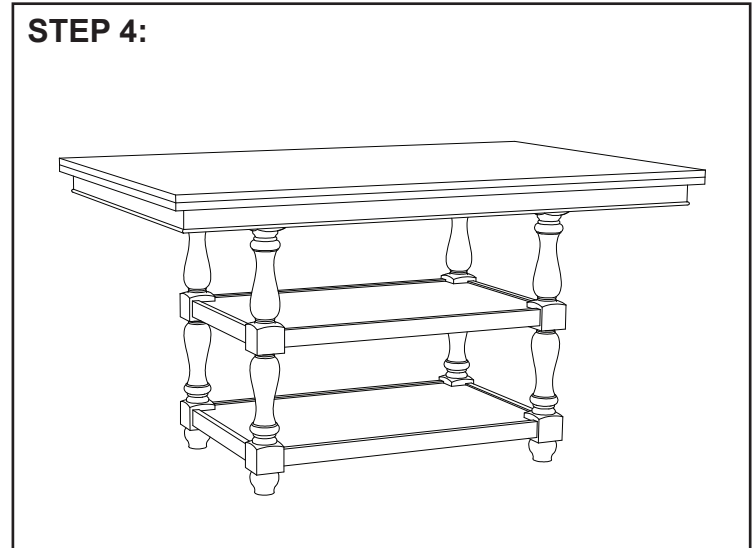
Attach one shelf to the middle part of the table legs. Note: Do not tighten all bolts until the next step.

## STEP 3:



Attach the other shelf to the lower part of the table legs.

## STEP 4:



Turn the table upright. Apply firm pressure to align and fully tighten all bolts.