

ASSEMBLY INSTRUCTIONS

LFST

4954-PTO / 4955 PTO RND Drop Leaf CNT HGT Dining Table SKU #3349542 / 43349554

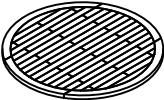
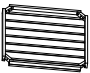
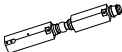
4954-DTO / 4955-DTO RND Drop Leaf Dining Table SKU #42249549 / 42249551

Version #1 - 2024/11/27


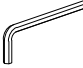
Caution: Please read instructions thoroughly before unpacking assembly parts. Sharp, exposed staple tips can cause injury, therefore, for your protection, please remove any exposed staple used in packing.

1. We recommend that you should assemble this product with the assistance of another person; this will make assembly easier, and will help to eliminate damage to the product or injury to person during assembly.
2. Be sure to check all packing materials carefully for small parts that may have come loose inside the carton during shipment.
3. Please do not over tighten screws or bolts.
4. Please put all parts on a non-abrasive floor before assembly, and follow the assembly steps to assemble your newly purchased product correctly and efficiently.

PART LISTS

NO	DESC	OUTLOOK	Q'TY
A	TABLE TOP		1 pc
B	BOTTOM SHELVES		2 pcs
C	TABLE LEGS		4 pcs

HARDWARE LISTS

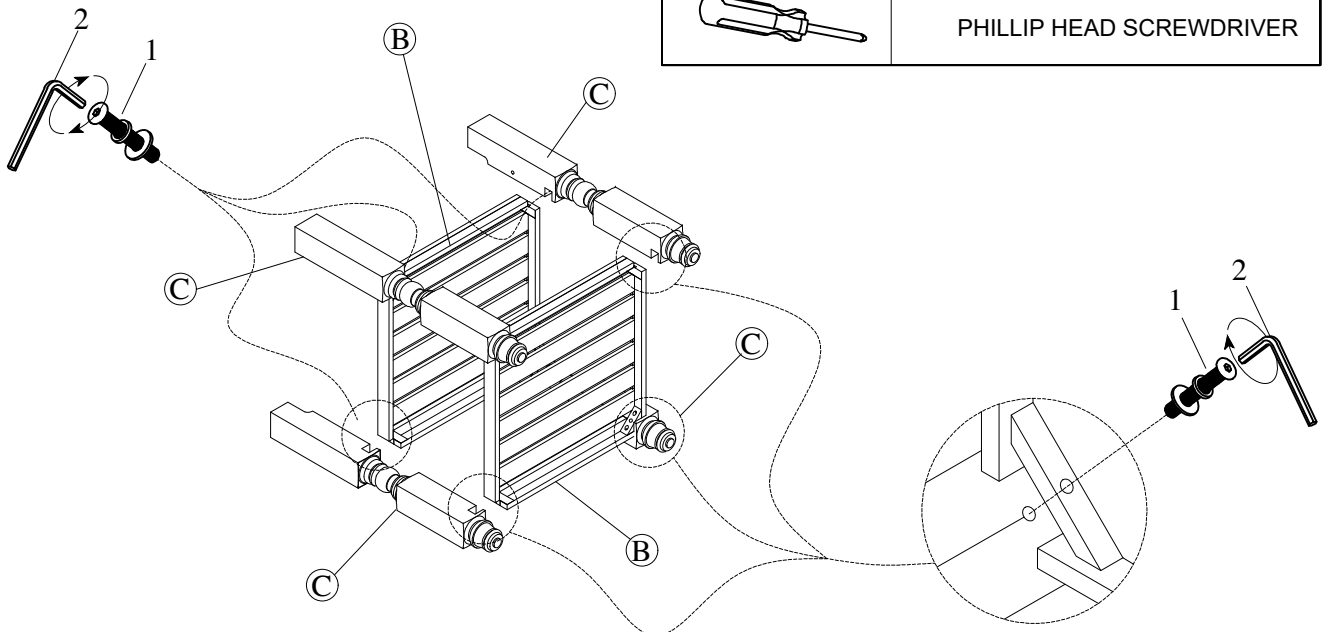
NO	OUTLOOK	SIZE	Q'TY
1		BOLT (5/16"-18x 60mm)	16 pcs
		SPRING WASHER (5/16"xØ13x1.5mm)	16 pcs
		SPRING WASHER (5/16"xØ19x1.5mm)	16 pcs
2		ALLEN KEY (4x23x58mm)	1 pc

TOOL REQUIRED (Not provided)



PHILLIP HEAD SCREWDRIVER

STEP 1



Hardware Pack Locations:

4954-PTO / 4955 PTO RND Drop Leaf CNT HGT Dining Table SKU # 3349542 / 43349554

4954-DTO / 4955-DTO RND Drop Leaf Dining Table SKU # 42249549 / 42249551

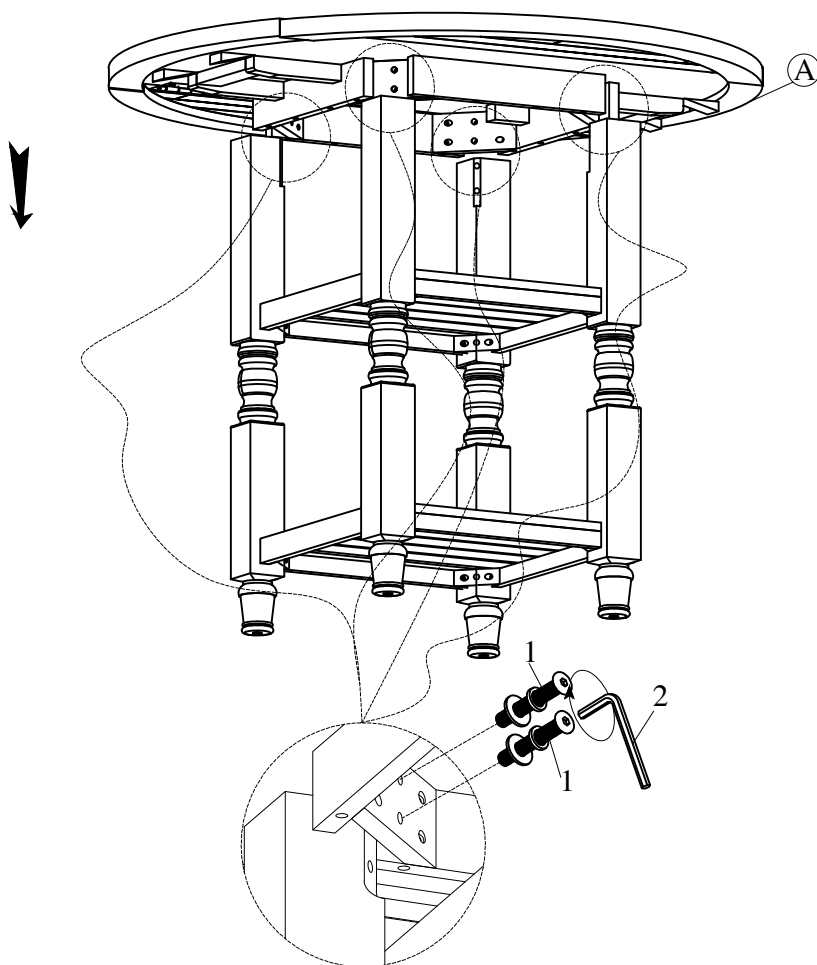
ASSEMBLY INSTRUCTIONS

LFST

4954-PTO / 4955 PTO RND Drop Leaf CNT HGT Dining Table SKU # 3349542 / 43349554
4954-DTO / 4955-DTO RND Drop Leaf Dining Table SKU # 42249549 / 42249551

Version #1 - 2024/11/27

STEP 2



FINAL

